

Oxford Companies  
734.665.6500  
oxfordcompanies.com



Integrated  
Real Estate  
Services



## Office Building For Lease

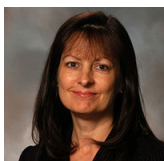
Burlington Office Center

315 E Eisenhower Parkway, Suite 205

Ann Arbor, MI 48108

2,430 SF

\$28.00 SF/yr (MG)



Contact Karen O'Neil for  
more information or to  
schedule a tour.

Office: 734.665.6500  
Cell: 734.323.4263  
koneil@oxfordcompanies.com

Burlington Office Center  
315 E Eisenhower Parkway, Suite 205  
Ann Arbor, MI 48108



Integrated  
Real Estate  
Services



## OFFERING SUMMARY

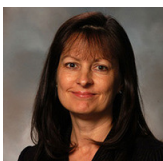
Lease Rate:	\$28.00 SF/yr (MG)
Available SF:	2,430 SF
Year Built:	1986
Renovated:	2013
Zoning:	TC1
Submarket:	South Ann Arbor

## PROPERTY OVERVIEW

The Burlington Office Center is one of the most prominent business centers in Ann Arbor's desirable Southside businesses corridor. Burlington is situated on more than five acres of walkable, private wooded land and provides approximately 200,000 square feet of upscale, class A office space. Home to the largest private pond in the area, Burlington integrates incomparable scenic beauty with a professional Ann Arbor office environment. This three-building office center is unsurpassed in good looks, location, and convenience. Spaces at Burlington offer floor-to-ceiling windows with spectacular views and renovated common areas, including bathrooms and new awnings – the perfect blank slate for building out your ideal office space.

## PROPERTY HIGHLIGHTS

- Beautiful Class A three-building office center with floor to ceiling windows with spectacular views in the atrium
- Open floorplan allows for a layout customizable to each tenant
- Ample parking with covered parking available
- Fiber optic internet
- Immediate access to I-94 and minutes from downtown Ann Arbor
- Locally owned and professionally managed with 24/7 on-call emergency maintenance



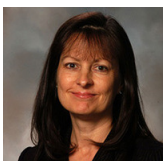
Contact Karen O'Neil for more information or to schedule a tour.

Office: 734.665.6500  
Cell: 734.323.4263  
koneil@oxfordcompanies.com

Burlington Office Center  
315 E Eisenhower Parkway, Suite 205  
Ann Arbor, MI 48108



Integrated  
Real Estate  
Services



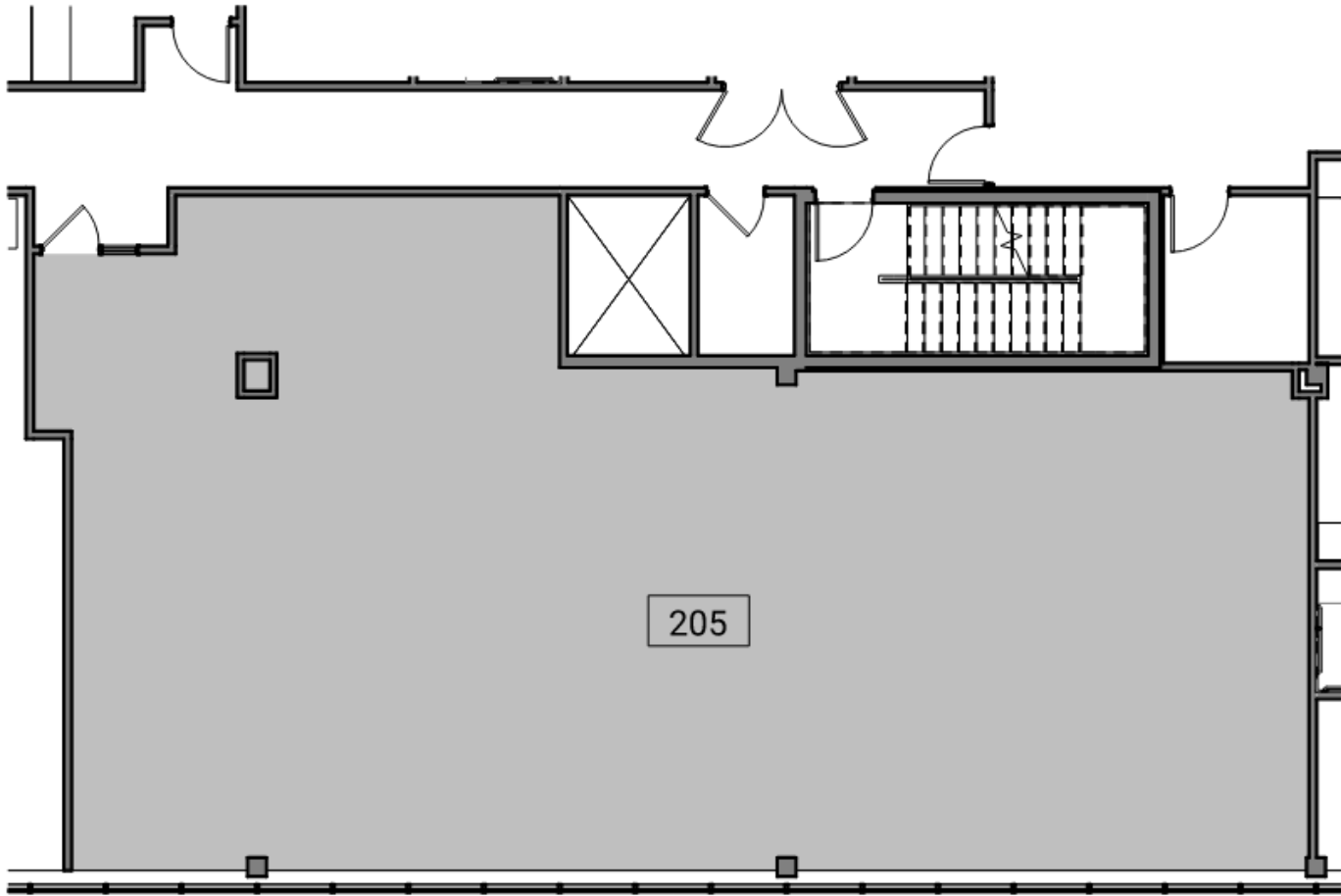
Contact Karen O'Neil for  
more information or to  
schedule a tour.

Office: 734.665.6500  
Cell: 734.323.4263  
[koneil@oxfordcompanies.com](mailto:koneil@oxfordcompanies.com)

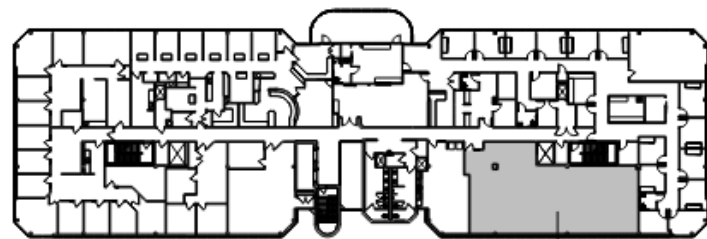
Burlington Office Center  
315 E Eisenhower Parkway, Suite 205  
Ann Arbor, MI 48108



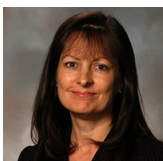
Integrated  
Real Estate  
Services



**2** Suite 205 - Floor Plan  
Scale: 3/32" = 1'-0"  
5'-4" 10'-8" 21'-4"



**1** Key Plan - Level 2  
Scale: 1" = 80'-0"  
80' 160'



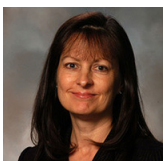
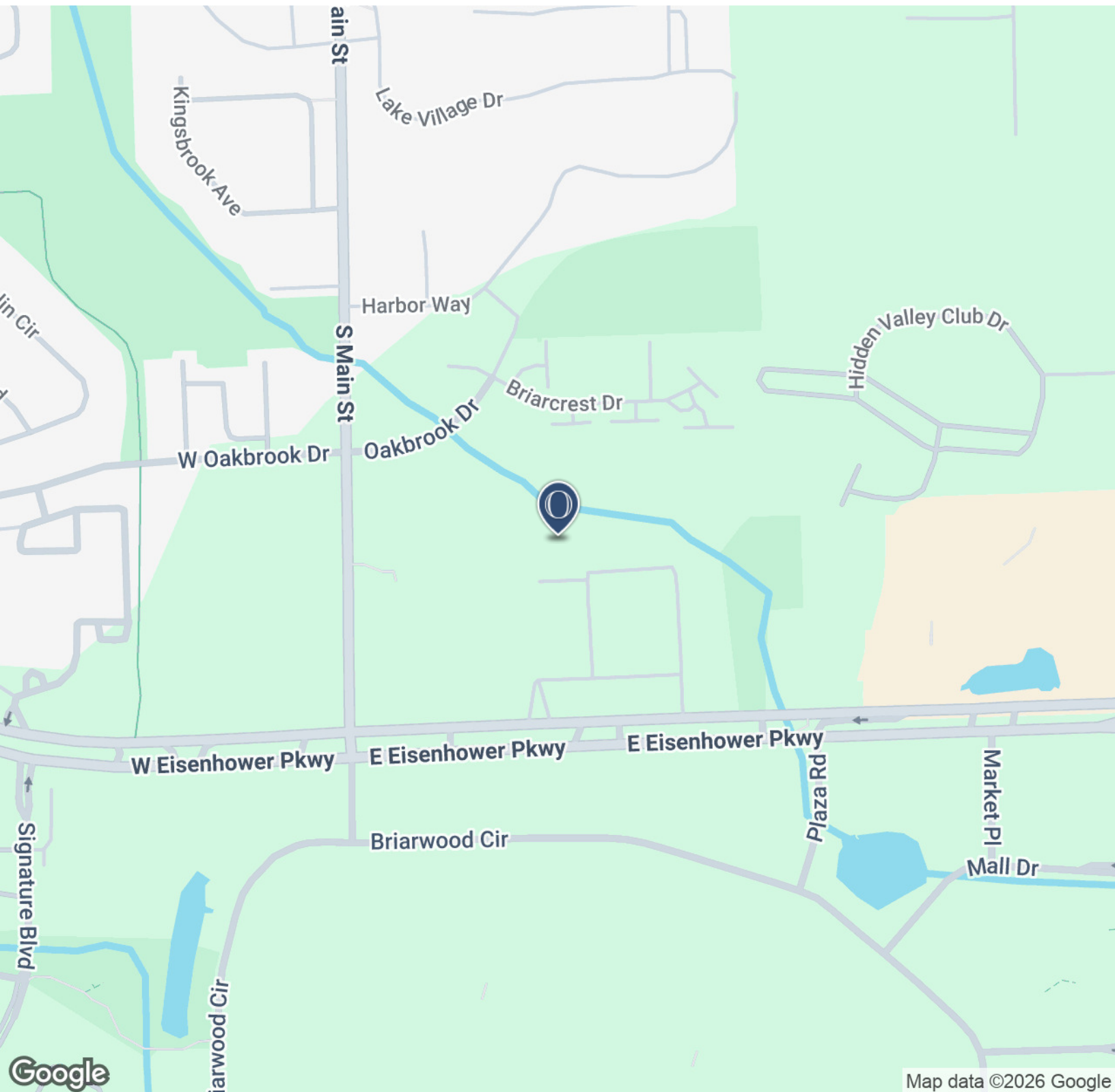
Contact Karen O'Neil for more information or to schedule a tour.

Office: 734.665.6500  
Cell: 734.323.4263  
koneil@oxfordcompanies.com

Burlington Office Center  
315 E Eisenhower Parkway, Suite 205  
Ann Arbor, MI 48108



Integrated  
Real Estate  
Services



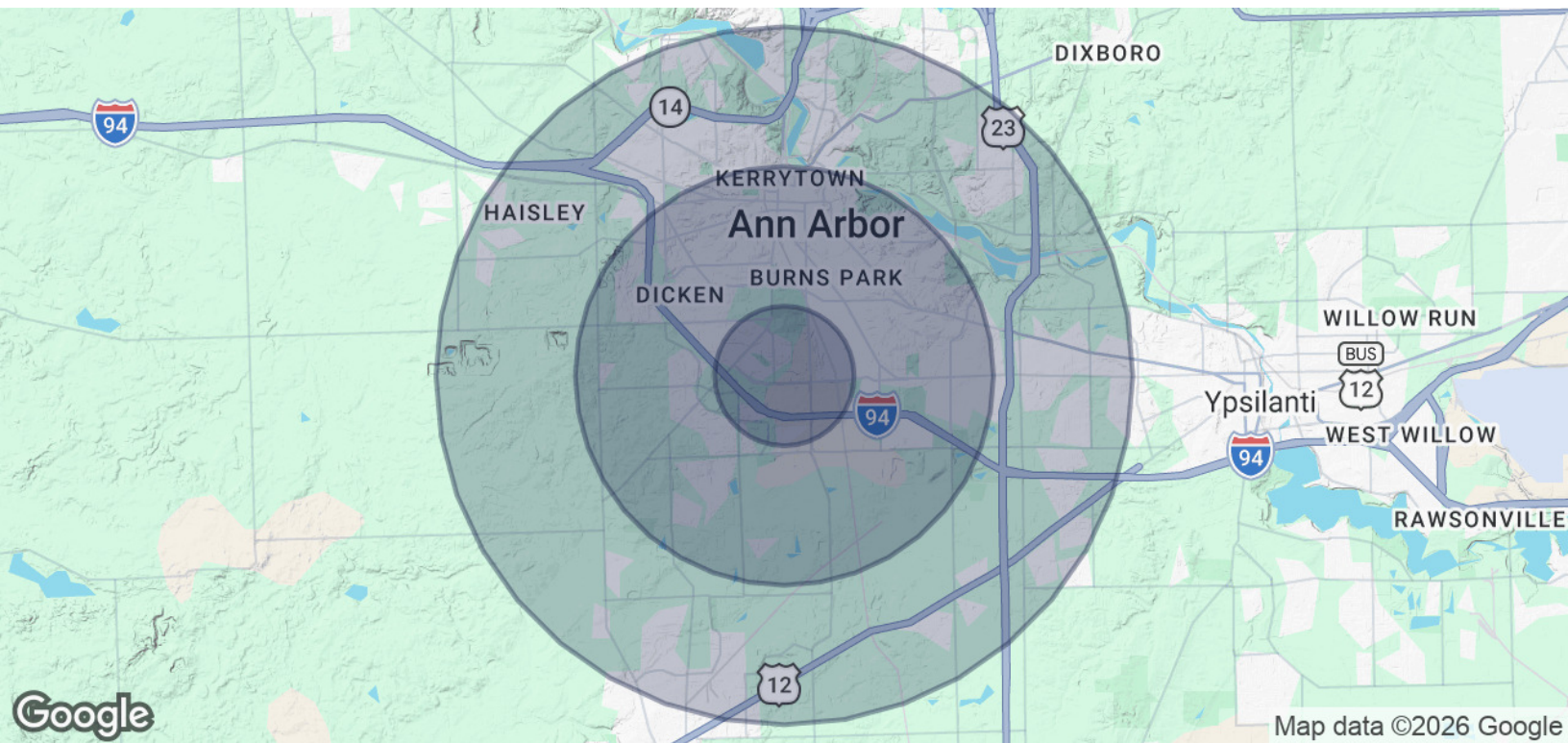
Contact Karen O'Neil for  
more information or to  
schedule a tour.

Office: 734.665.6500  
Cell: 734.323.4263  
[koneil@oxfordcompanies.com](mailto:koneil@oxfordcompanies.com)

Burlington Office Center  
 315 E Eisenhower Parkway, Suite 205  
 Ann Arbor, MI 48108



Integrated  
 Real Estate  
 Services

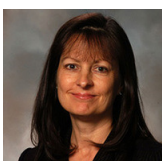


POPULATION	1 MILE	3 MILES	5 MILES
Total Population	7,564	92,324	171,314
Average Age	41	36	37
Average Age (Male)	39	35	36
Average Age (Female)	43	37	38

HOUSEHOLDS & INCOME	1 MILE	3 MILES	5 MILES
Total Households	4,060	38,235	71,097
# of Persons per HH	1.9	2.4	2.4
Average HH Income	\$136,171	\$120,649	\$123,909
Average House Value	\$439,452	\$512,126	\$485,047

2020 American Community Survey (ACS)



Contact Karen O'Neil for more information or to schedule a tour.

Office: 734.665.6500  
 Cell: 734.323.4263  
[koneil@oxfordcompanies.com](mailto:koneil@oxfordcompanies.com)