

FOR LEASE

Owned and Operated by  LINK

INTERNATIONAL AIRPORT CENTER

615 Westport Parkway, Grapevine, Texas

±94,905 SF



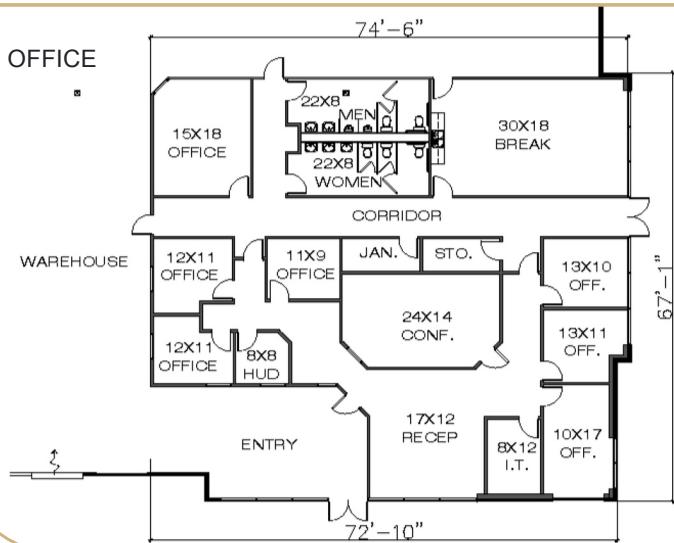
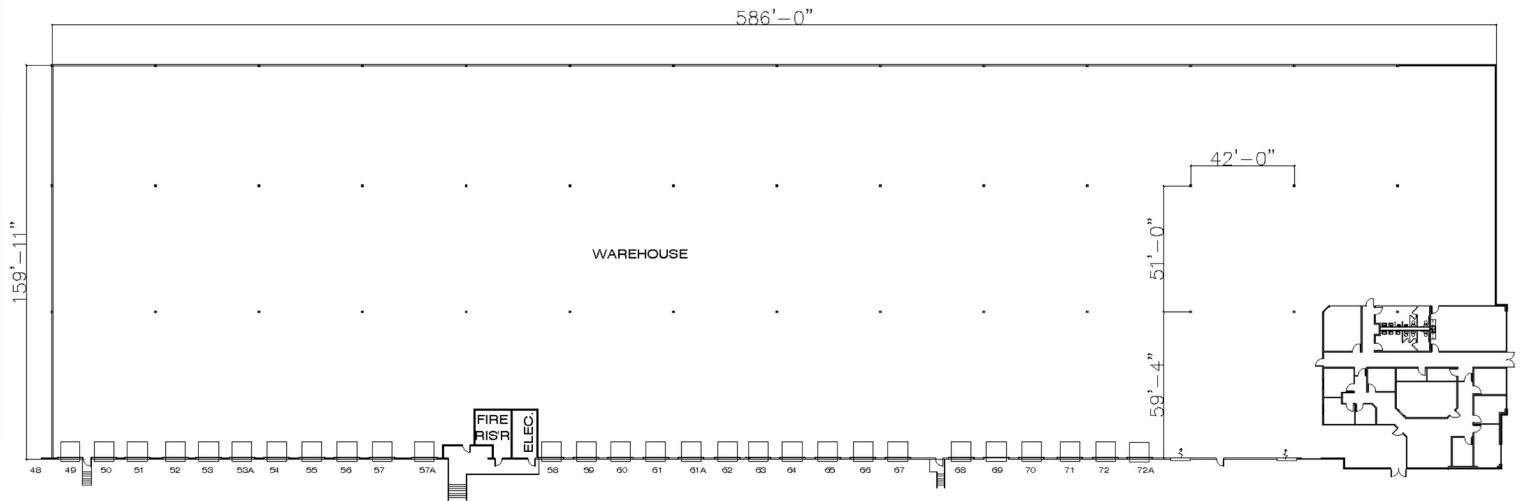
LEASING INFO
& CONTACT

Steve Koldyke
Brian Gilchrist

214 979 6381 / steve.koldyke@cbre.com
214 979 6394 / brian.gilchrist@cbre.com

CBRE

SITE PLAN



PROPERTY DETAILS

94,905 SF Available for Lease

Heavy Parking

90,562 SF Warehouse Space

51' x 42' Column Spacing

4,343 SF Office Space

160' Building Depth

(28) Dock Doors

ESFR Sprinkler System