

Glen Williams Lands

INVESTMENT OPPORTUNITY | HALTON HILLS, ONTARIO



±931 Acres Available For Sale On The Doorstep Of The GTA



GENERATIONAL LAND OPPORTUNITY





Property Overview

GENERATIONAL LAND OPPORTUNITY ON THE DOORSTEP OF THE GTA

Colliers & CBRE are pleased to offer for sale 931 acres of assembled land in Halton Hills. These lands represent one of the largest privately owned land holdings in the GTA and provides a unique investment opportunity for those looking to acquire strategic land for investment or agricultural uses. Currently operating as Canada's largest nursery operation with a deep history servicing the GTA and markets across Canada. These lands offer fertile soils, unparalleled irrigation systems, and direct access to Canada's largest population.

The Georgetown farms are a total of 849 acres across 5 parcels with fully operational systems in place including various buildings, shops, greenhouses, houses, and a well-maintained head office on site.

The Norval piece is designated Strategic Employment and offers developers and investors a future industrial site located along Winston Churchill, with close proximity to a future 413 exit as well as 401 access.

This offering represents an exciting opportunity for large scale farming operations, investors and strategic land buyers to acquire land holdings of scale, on the Halton/Peel borders.

DETAILS	PARCEL 1	PARCEL 2	PARCEL 3	PARCEL 4	PARCEL 5	PARCEL 6
Address	12302 10 Line, Halton Hills	12615 Line 10, Halton Hills	16768 Side Road 22, Halton Hills	S-15902 Side Road 22, Halton Hills	11874 Tenth Line, Halton Hills	9674 Winston Churchill Boulevard North, Norval
Site Size	72 Acres	151 Acres	402 Acres	150 Acres	74 Acres	82.5 Acres
Zoning	PC-NHS2	PC-NHS2 & PC-NHS1 (H2)	PC & PC-NHS2	PC & PC-NHS2 & PC-NHS1 (H2)	PC-NHS2 & A	Agriculture
Official Plan	Protected Countryside Area	Protected Countryside Area & Greenlands B	Protected Countryside Area & Greenlands	Protected Countryside Area & Greenlands B & Agricultural Area	Protected Countryside Area & Agricultural Area	Strategic Employment (HPBATS Corridor Protection Area)
Soil Classification	CLI5 & CLI3	CLI2 & CLI4	CLI3 & CLI1	CLI2, CLI5, CLI3, CLI1	CLI5, CLI3, CLI1	CLI3



72 Acres

Parcel 1



Address 12302 10 Line, Halton Hills

Site Size 72 Acres

Zoning PC-NHS2

Official Plan Protected Countryside Area

Soil Classification CLI5 & CLI3





Parcel 2



Address	12615 Line 10, Halton Hills
Site Size	151 Acres
Zoning	PC-NHS2 & PC-NHS1 (H2)
Official Plan	Protected Countryside Area & Greenlands B
Soil Classification	CL12 & CL14





Parcel 3



Address 16768 Side Road 22, Halton Hills

Site Size 402 Acres

Zoning PC & PC-NHS2

Official Plan Protected Countryside Area & Greenlands

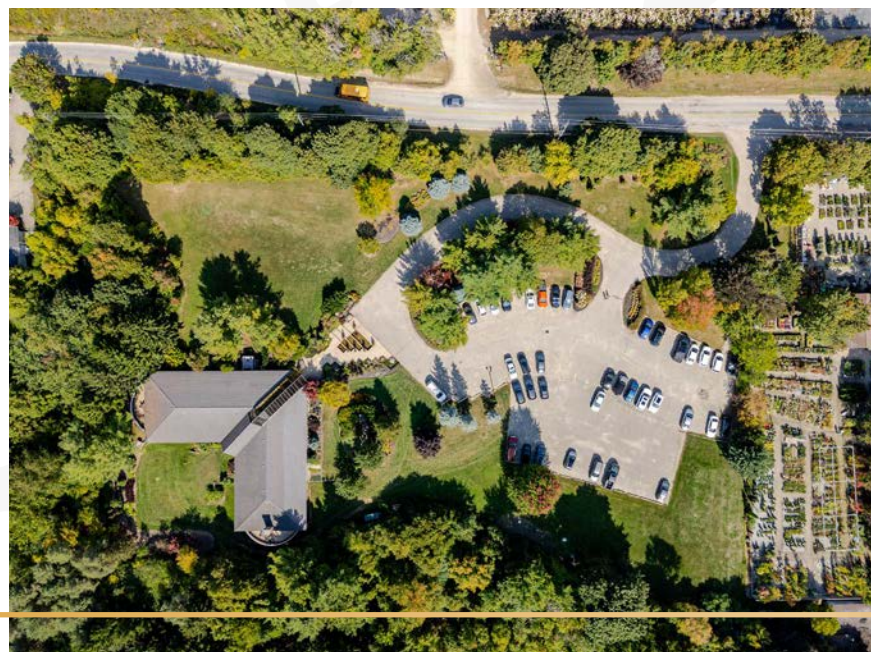
Soil Classification CL13 & CL11





Parcel 4

Address	S-15902 Side Road 22, Halton Hills
Site Size	150 Acres
Zoning	PC & PC-NHS2 & PC-NHS1 (H2)
Official Plan	Protected Countryside Area & Greenlands B & Agricultural Area
Soil Classification	CL12, CL15, CL13, CL11





Parcel 5



Address	11874 Tenth Line, Halton Hills
Site Size	74 Acres
Zoning	PC-NHS2 & A
Official Plan	Protected Countryside Area & Agricultural Area
Soil Classification	CLI5, CLI3, CLI1





Parcel 6



Address	9674 Winston Churchill Boulevard North, Norval
Site Size	82.5 Acres
Zoning	Agriculture
Official Plan	Strategic Employment (HPBATS Corridor Protection Area)
Soil Classification	CL13



Glen Williams Lands

CONTACT US

GREG CLARK**
Executive Vice President
416 801 4431
Gregory.Clark@colliers.com

DANIEL BAHRAMI*
Sales Representative
416 643 3795
Daniel.Bahrami@colliers.com

MADISON SCOTT*
Sales Representative
905 516 7154
Madison.Scott@colliers.com



TED OVERBAUGH**
Senior Vice President
519 340 2309
Ted.Overbaugh@cbre.com

ZACH VAN LOUWE*
Associate Vice President
519 340 2321
Zachary.VanLouwe@cbre.com



Colliers | 3389 Steeles Ave E, Suite 400 | North York, ON | M2H 3S8

CBRE Limited, Real Estate Brokerage | 72 Victoria Street S, Suite 200 | Kitchener, ON | N2G 4Y9 | *Sales Representative, **Broker

This disclaimer shall apply to CBRE Limited, Real Estate Brokerage, and to all other divisions of the Corporation; to include all employees and independent contractors ("CBRE"). All references to CBRE Limited herein shall be deemed to include CBRE, Inc. The information set out herein, including, without limitation, any projections, images, opinions, assumptions and estimates obtained from third parties (the "Information") has not been verified by CBRE, and CBRE does not represent, warrant or guarantee the accuracy, correctness and completeness of the Information. CBRE does not accept or assume any responsibility or liability, direct or consequential, for the Information or the recipient's reliance upon the Information. The recipient of the Information should take such steps as the recipient may deem necessary to verify the Information prior to placing any reliance upon the Information. The Information may change and any property described in the Information may be withdrawn from the market at any time without notice or obligation to the recipient from CBRE. CBRE and the CBRE logo are the service marks of CBRE Limited and/or its affiliated or related companies in other countries. All other marks displayed on this document are the property of their respective owners. All Rights Reserved. Mapping Sources: Canadian Mapping Services canadamapping@cbre.com; DMTI Spatial, Environics Analytics, Microsoft Bing, Google Earth.