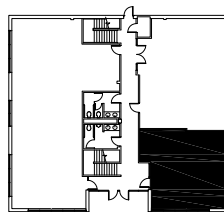
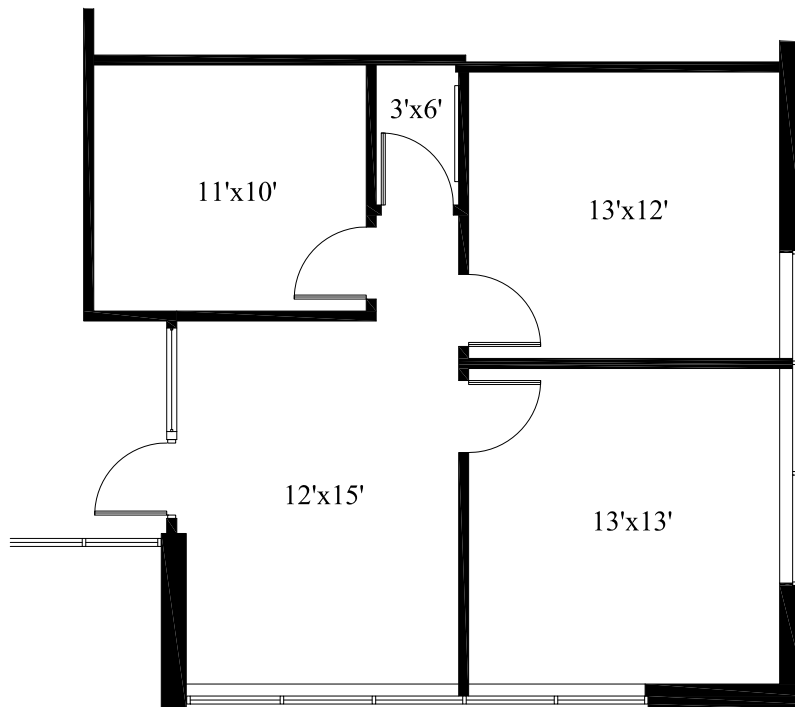


COMMERCE PARK

8402 Sterling, Irving, Texas

SUITE 103

823 RSF



1ST FLOOR

Scale: 1/8"=1'-0"

All dimensions and square footages are approximate.

August 10, 2016

Managed and Leased By:

FOBARE COMMERCIAL

18111 PRESTON ROAD - SUITE 1000 - DALLAS, TX. 75252 - (972) 458-7585 - FAX (972) 458-0267