

WSU SOUTH RETAIL SPACE

4185 E. Harry St., Wichita, KS

**LEASE RATE:
CONTACT BROKER**

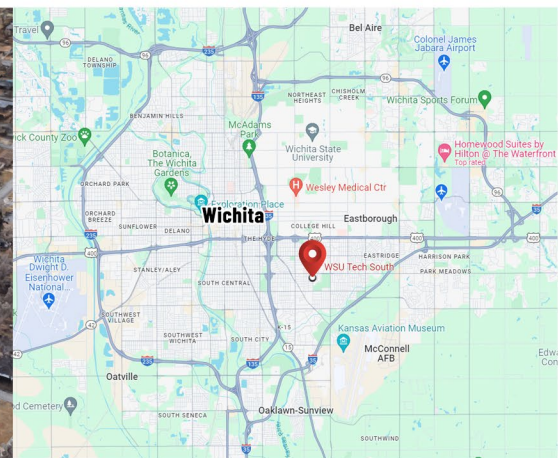


PROJECT FEATURES

- WSU South Campus includes WSU Shocker Studios, WSU Tech, NexStep Alliance, Marriott International, Saint Francis Community Services, DANDURAND Pharmacy, Big Lots, Sedgwick County Comcare, Sunflower Bank, Shanghai Restaurant, Pho Ong Restaurant, Wichita City Library Branch.
- Approximately 15,946 square feet of space is available between the City Library land DANDURAND PHARMACY that can easily be divided (see example on page 3 of flyer).
- The Campus population approximates 2,000 - 2,500 students, faculty, and employees of a variety of businesses on-site.

DEMOGRAPHICS	1 MILE	3 MILES	5 MILES
MEDIAN AGE	36.0	34.8	34.2
POPULATION	13,341	78,193	184,472
AVG. HH. INCOME	\$37,750	\$48,326	\$50,527

TRAFFIC COUNTS	
ALONG E. HARRY ST.	15,437 VPD

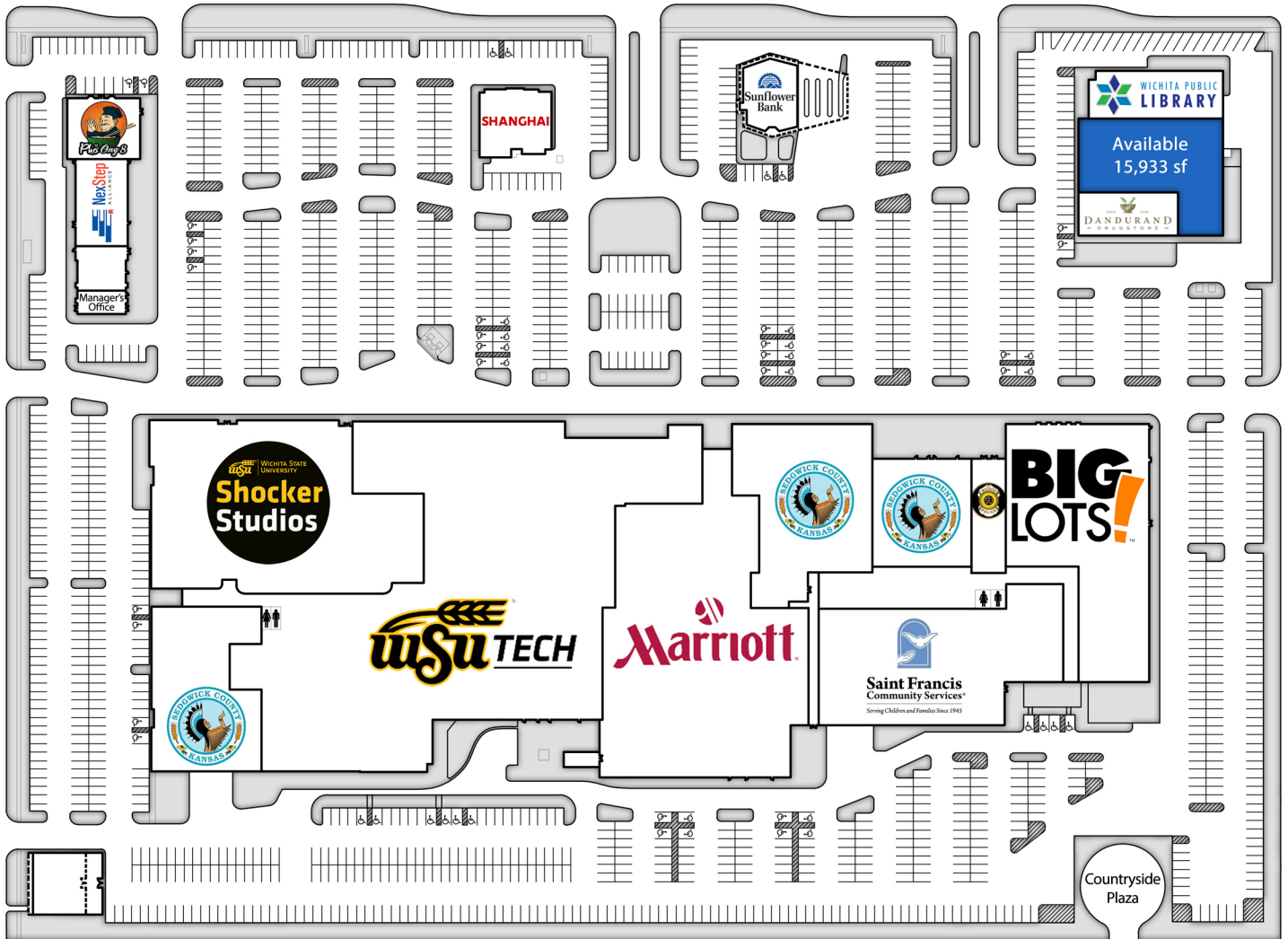


Offered exclusively by: **Lee Cole** | 316-292-3936 | lcole@weigand.com

WSU SOUTH RETAIL SPACE

4185 E. Harry St., Wichita, KS 67218

HARRY STREET



ROOSEVELT STREET

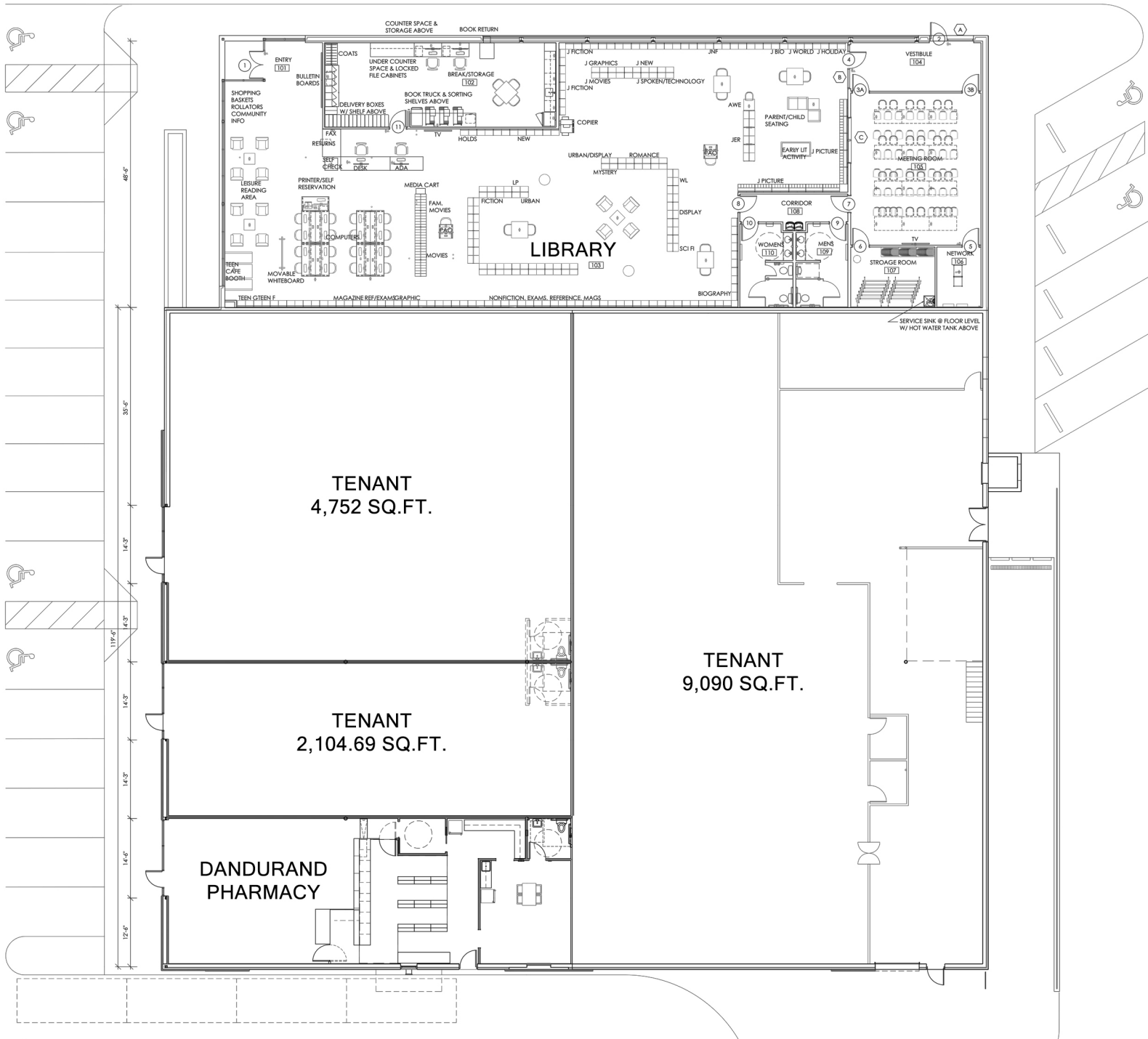
TERRACE STREET



Offered exclusively by: **Lee Cole** | 316-292-3936 | lcole@weigand.com

WSU SOUTH RETAIL SPACE

4185 E. Harry St., Wichita, KS 67218



Offered exclusively by: **Lee Cole** | 316-292-3936 | icole@weigand.com