

# 5.3 ACRES | 43,200 SF BUILD-TO-SUIT

1021 Barrow Industrial Parkway  
Winder, GA 30680 | Barrow County

  
**BARROW 316**  
**INDUSTRIAL PARK**



BRETT BUCKNER | 770.913.3923 | [bbuckner@ackermanco.net](mailto:bbuckner@ackermanco.net)

CHRIS MILLER | 770.913.3989 | [cmiller@ackermanco.net](mailto:cmiller@ackermanco.net)

Ackerman & Co.

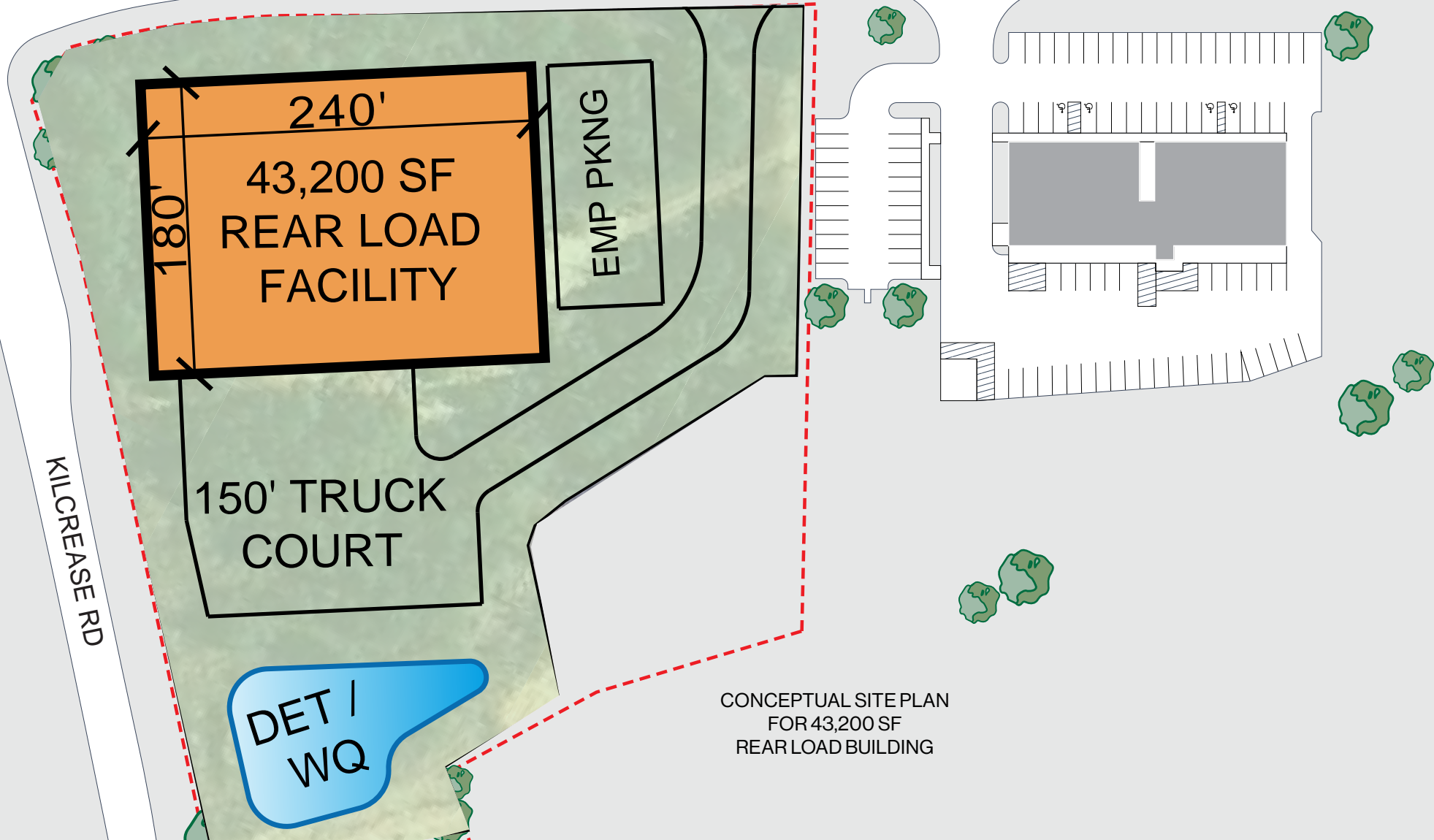
©2024 Ackerman & Co. All rights reserved. While we have no reason to doubt the accuracy of the information provided from sources we deem reliable, we cannot guarantee it and therefore assume no liability for errors, omissions or changes to this content.

# 5.3 ACRES | 43,200 SF BUILD-TO-SUIT

1021 Barrow Industrial Parkway  
Winder, GA 30680 | Barrow County



BARROW INDUSTRIAL PKWY



CONCEPTUAL SITE PLAN  
FOR 43,200 SF  
REAR LOAD BUILDING



**BARROW 316  
INDUSTRIAL PARK**

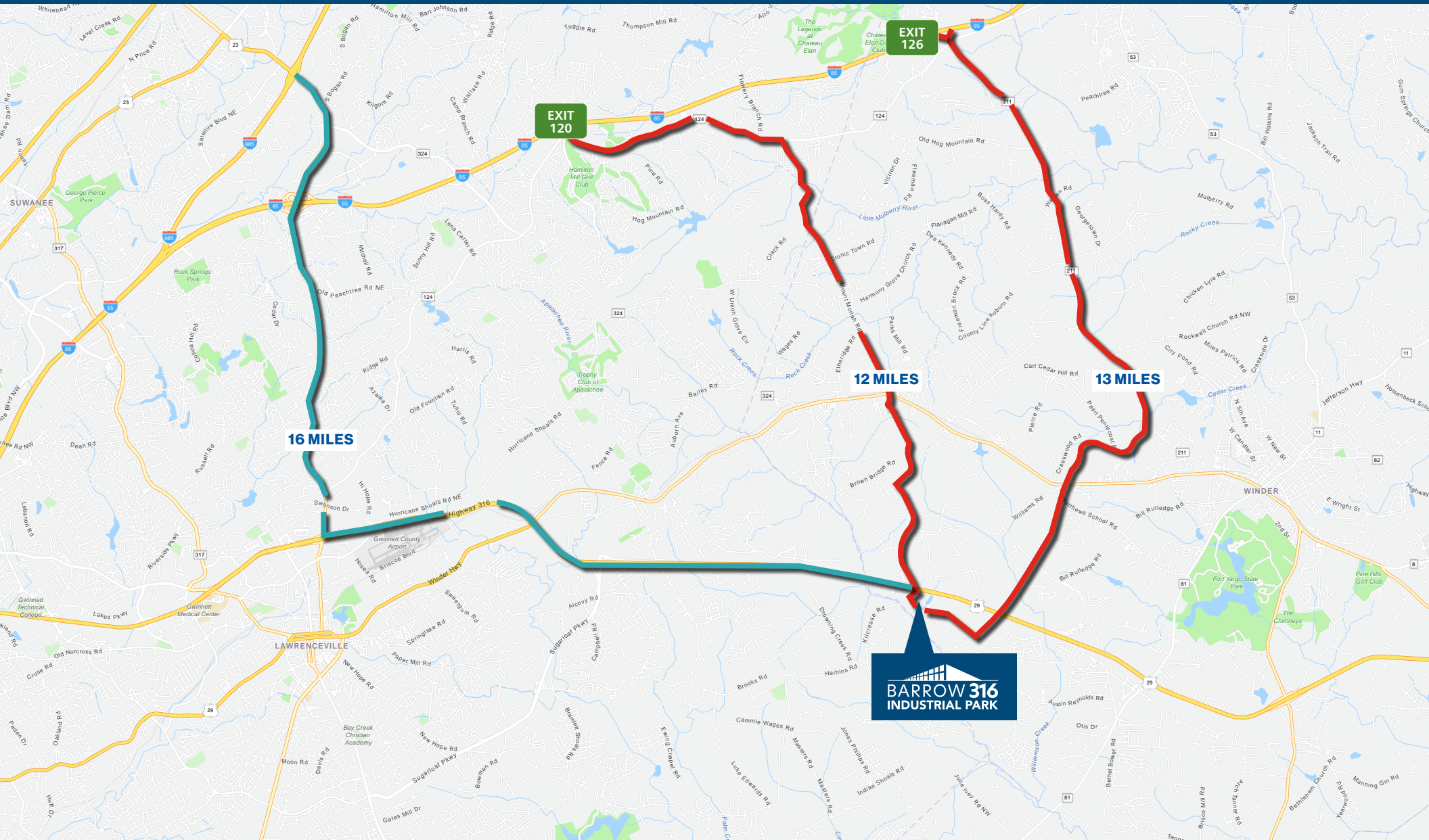
# Distribution | Warehouse

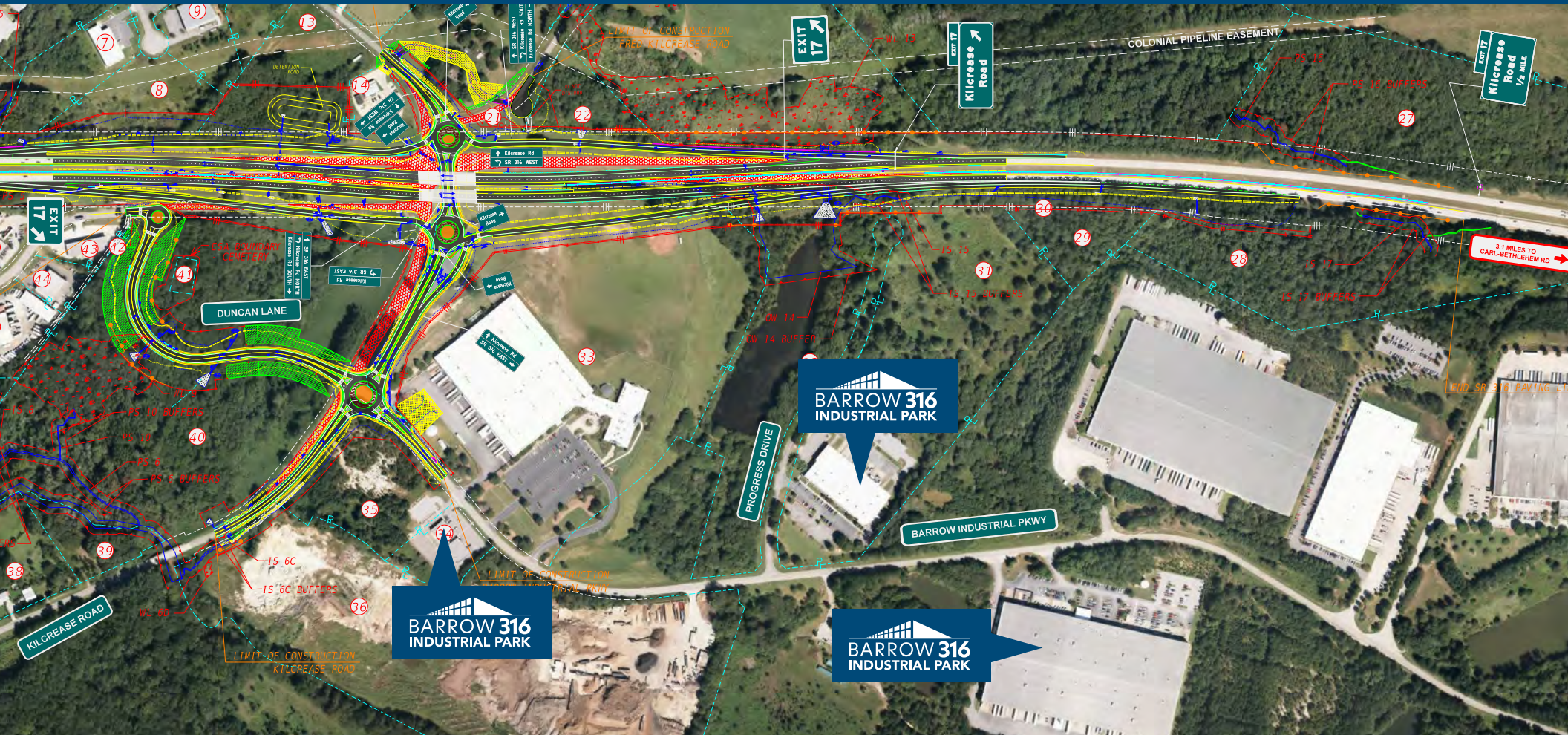
Available for Lease • Build-to-Suit • Sale

**2,500 - 500,000 SF**









The proposed SR 316 at Kilcrease Road Reconstruction project (P.I. No. 0013902) is part of a series of roadway improvement projects along SR 316 from SR 20 in Gwinnett County to SR 10 in Athens, Oconee County. The proposed improvements near the vicinity of SR 316 at Kilcrease Road include:

- Reconstruct the existing signalized, at-grade crossing at SR 316 and Kilcrease Road to a grade-separated interchange.