



LAST REMAINING RETAIL BAY
845 SQ FEET FRONTING SW 8TH ST (CALLE OCHO)

OVERVIEW



Address	2100 SW 8 th Street, Miami, Florida 33135
Size	845 Square Feet
Price	\$45.00/SF NNN (est. \$13/SF)
Zoning	T6-8-0
Parking	Ample, Shared Parking On-Site

THE CULTURAL SPINE OF LITTLE HAVANA



Calle Ocho - Located along Miami's iconic Calle Ocho in the heart of Little Havana, the property benefits from a highly activated retail corridor surrounded by top-performing restaurants, nightlife venues, and cultural destinations.

The area draws a steady mix of local residents, daytime workers, and significant tourist traffic, creating a dynamic day-to-night environment ideal for food & beverage, service retail, and experiential concepts.



YOUR SIGN HERE



STRONG SIGNAGE OPPORTUNITY



POTENTIAL FOR OUTDOOR ACTIVATION



STEPS TO DOZENS OF APARTMENTS, RETAIL & DINING!



READY FOR TENANT'S CUSTOMIZATION



HVAC, CONCRETE FLOORS & ADA RESTROOM IN-PLACE

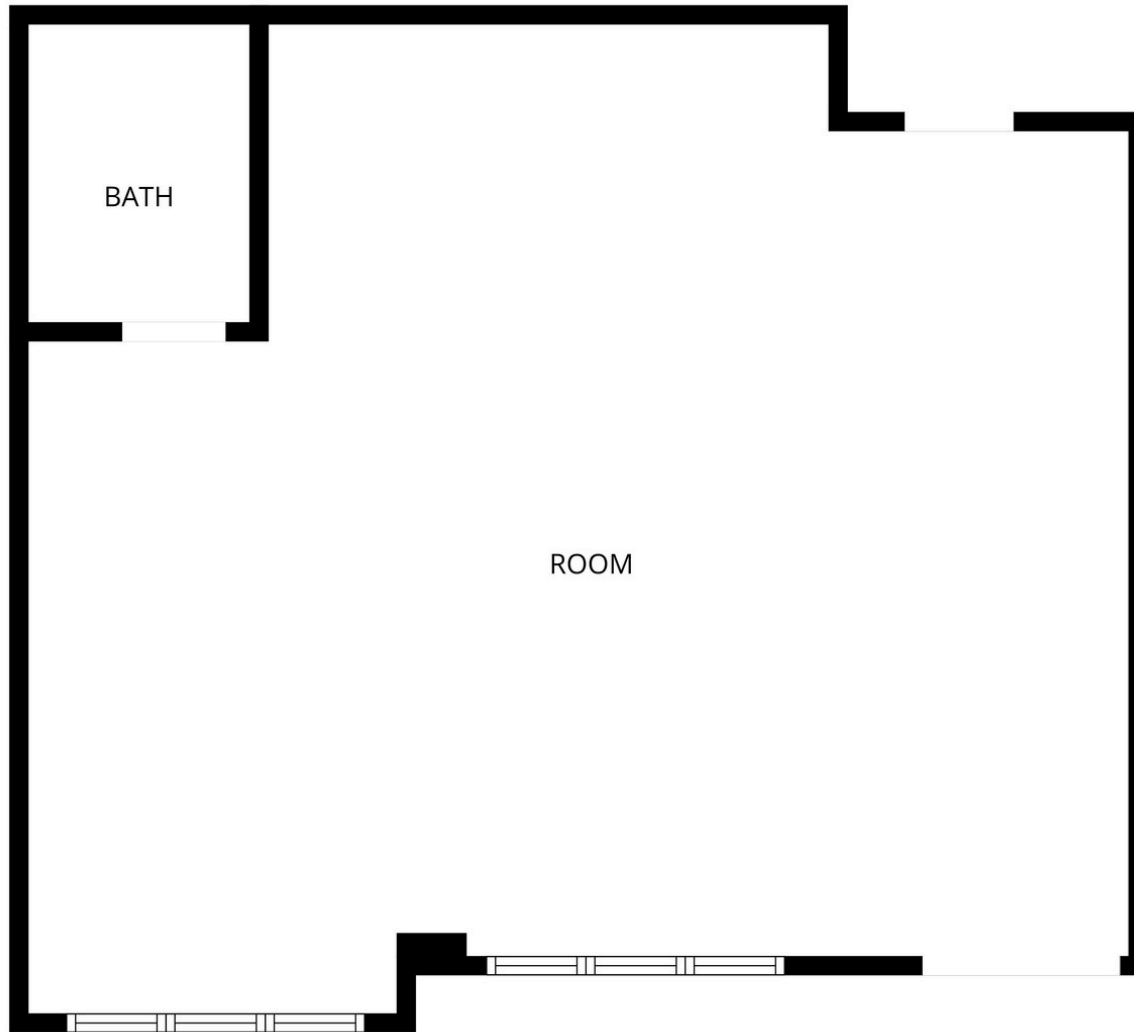


AI GENERATED RENDERINGS FOR POTENTIAL USER



AI GENERATED RENDERINGS FOR POTENTIAL USER

FLOORPLAN



CONTACT



KALEY TUNING

kt@nativerealty.com
(954) 871 - 8927

Native Realty Co. is a Licensed Real Estate Broker. This offering is subject to errors, omissions and change of price. As such no warranty or representation, expressed or implied, is made to the accuracy or completeness of the information contained herein. Any reliance on this information is solely at your own risk.