

3777

LONG BEACH BOULEVARD

LONG BEACH, CA

CBRE





Everything You Need

Five-story office building located on the corner of Long Beach Blvd and Bixby Road in the Bixby Knolls community of Long Beach, CA. Ample amenities in walking distance with SteelCraft Long Beach across the street and just a block away from Atlantic Blvd. Immediate access to the 405 Freeway, the Long Beach Airport and conveniently located to the Long Beach Port and the greater Los Angeles area.

Controlled Access

**Surface Parking for
130 Cars**

Very Walkable (87)

Convenient for Transit





availability



Annex

6,946 SF

Suite 240

1,285 SF

Suite 300

8,346 SF

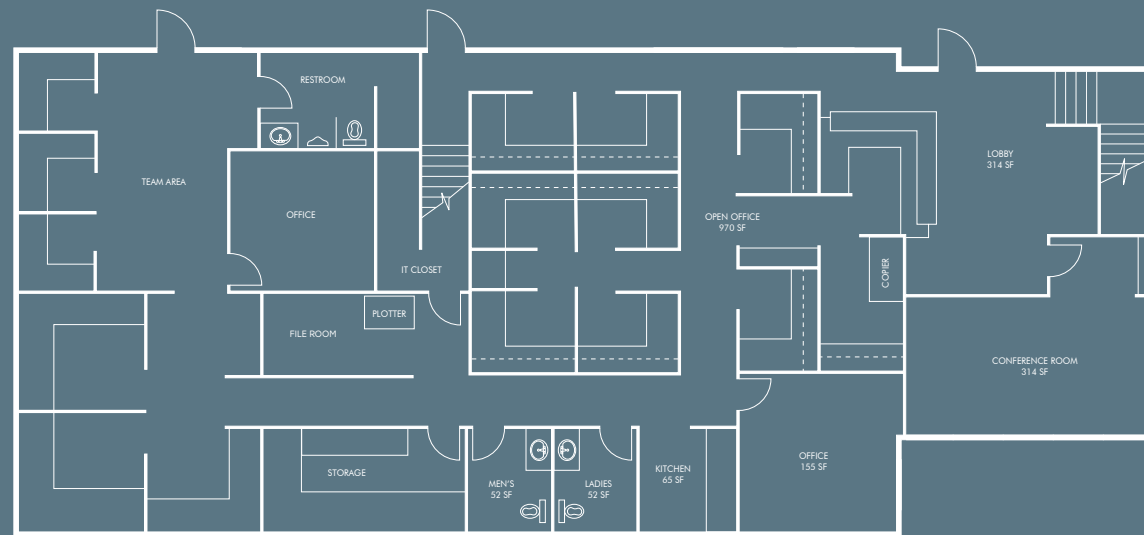
Suite 500

8,346 SF

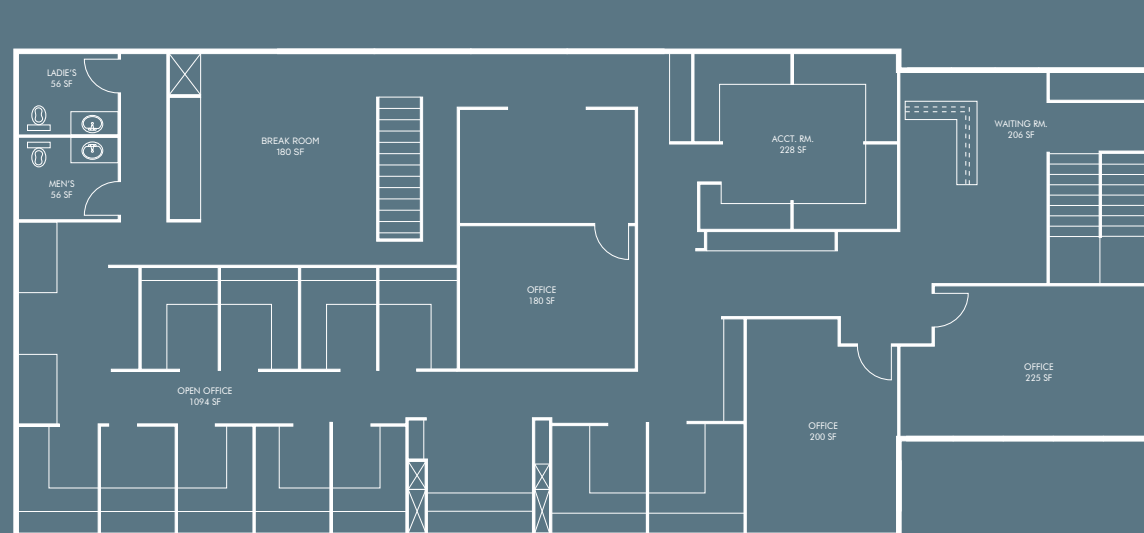


floor plan

First Floor Plan
Annex Alta

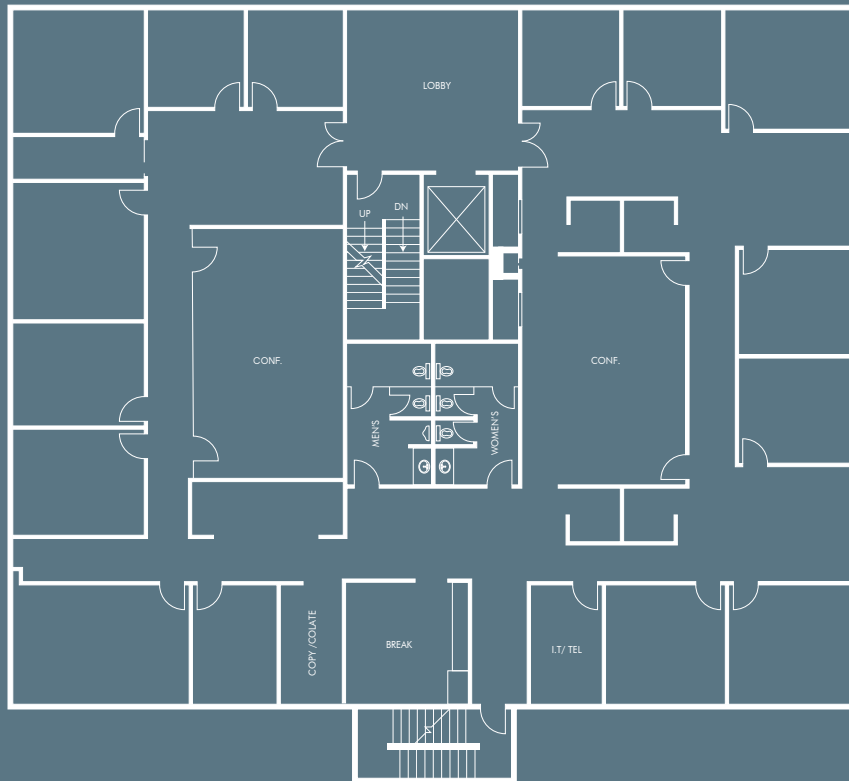


Second Floor Plan
Annex Alta

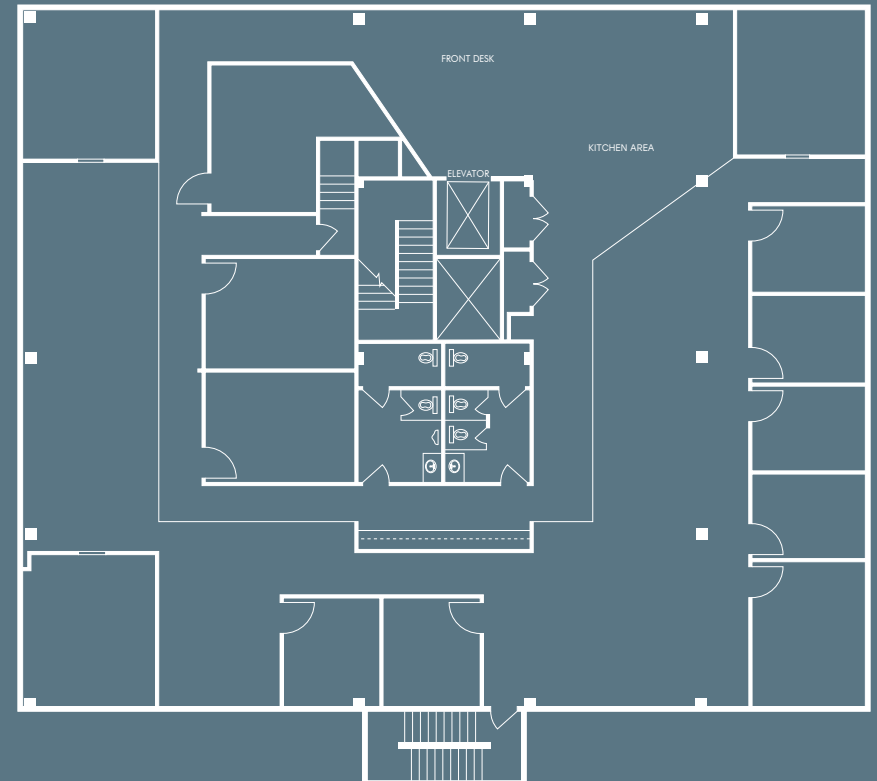


floor plan

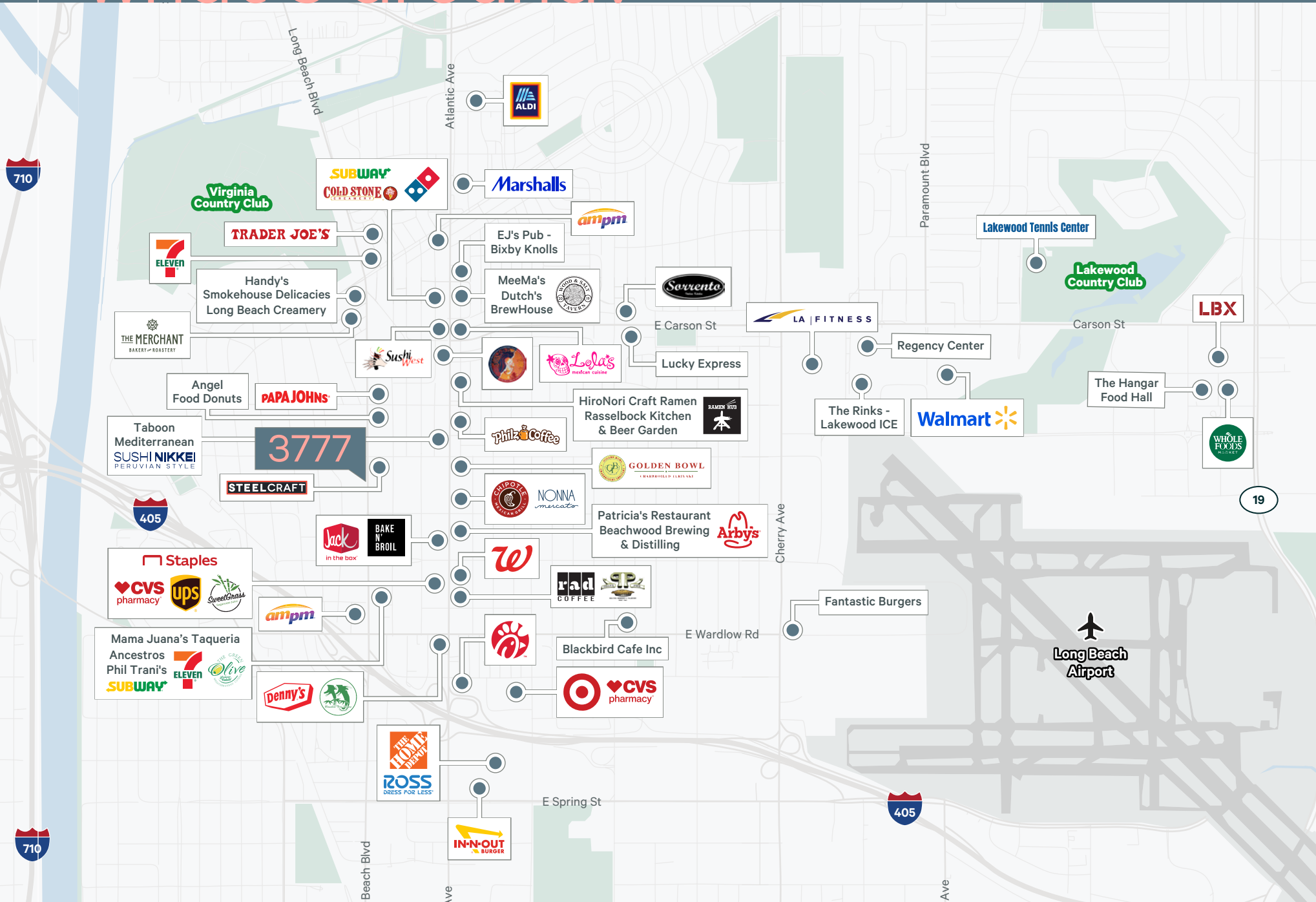
Third Floor Plan



Suite 500



what's around?





3777

LONG BEACH BOULEVARD
LONG BEACH, CA

FOR MORE INFORMATION, PLEASE CONTACT:

TOM SHEETS
EXECUTIVE VICE PRESIDENT
+1 310 363 4943
tom.sheets@cbre.com
LIC. 01252183

QUINT CARROLL
SENIOR VICE PRESIDENT
+1 310 363 4900
quint.carroll@cbre.com
LIC. 01914692

© 2026 CBRE, Inc. All rights reserved. This information has been obtained from sources believed reliable, but has not been verified for accuracy or completeness. You should conduct a careful, independent investigation of the property and verify all information. Any reliance on this information is solely at your own risk. CBRE and the CBRE logo are service marks of CBRE, Inc. All other marks displayed on this document are the property of their respective owners. Photos herein are the property of their respective owners and use of these images without the express written consent of the owner is prohibited.

CBRE