



FOR  
LEASE

# 12103 12TH AVE SOUTH

BURNSVILLE, MN 55337

This 3,240 SF office/warehouse space in Burnsville offers 1,320 SF of office and 1,920 SF of warehouse space with 14' clear height and one dock door. Built in 1978, the property is ideally located with quick access to Interstate 35W and Highway 13. It sits just minutes from Burnsville Center and a wide variety of retail, restaurants, and business services, making it an excellent opportunity for warehouse, distribution, or showroom users seeking a strong south metro location.

## HUNTER STANEK

✉ HUNTER@GCPMN.COM

📞 612.500.7997

🌐 GONYEACOMMERCIAL.COM



# DETAILS



Address

**12103 12th Ave South  
Burnsville, MN 55337**



Building Size

**14,300 Square Feet**



Space Available

**Suite 12103**



Office Square Footage

**1,320 Square Feet**



Warehouse Square Footage

**1,920 Square Feet**



Total Square Footage

**3,240 Square Feet**



Rental Rate

**\$3,320.00/month  
(plus utilities)**



Year Built

**1978**



Ceiling Clear Height

**14'**



Loading Access

**1 Dock Door**



Date Available

**4/1/2026**

**HUNTER STANEK**

✉ HUNTER@GCPMN.COM

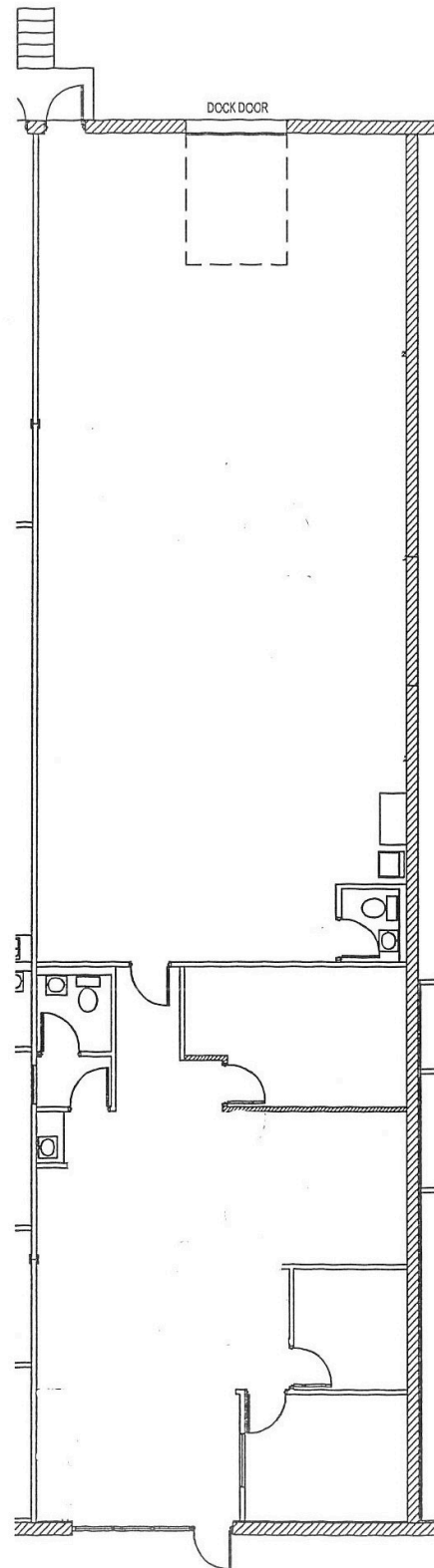
📞 612.500.7997

🌐 GONYEACOMMERCIAL.COM



# FLOOR PLAN

12103 12TH AVE SOUTH  
BURNSVILLE, MN 55337



**HUNTER STANEK**

✉ [HUNTER@GCPMN.COM](mailto:HUNTER@GCPMN.COM)

📞 612.500.7997

🌐 [GONYEACOMMERCIAL.COM](http://GONYEACOMMERCIAL.COM)

