



FOR LEASE

# I-80 Logistics Center Building 2 | Suite 200

350 North John Glenn Rd | SLC, UT

**±131,334 SF Industrial Space**

**Available October 2026**

- Building Size: ±285,149 SF
- Suite 200: ±131,334 SF
- Divisible to: ±54,830 SF
- Dock High Doors:
  - Twenty-two (22) 9'x10'
- Grade Level Doors: Three (3)
- Clear Height: 32'
- Fire Suppression: ESFR
- Column Spacing: 50' x 52'
  - / 60' staging bays
- Parking: 265 Auto | 67 Trailer stalls
- Power: 800a, 480v, 3-phase
  - Tenant to verify power
- Corporate Business Park Environment
- Abundant surrounding amenities
- Park located adjacent to Interstate 80
  - with visibility on I-80
- Park has excellent access to all major Interstates, Salt Lake International Airport, and is well situated with several points of ingress/egress with intersections at 5600 W & 7200 S

CONTACT US  
FOR RATE

**Tom Freeman, SIOR**  
Vice Chair  
801 947 8309  
tom.freeman@colliers.com

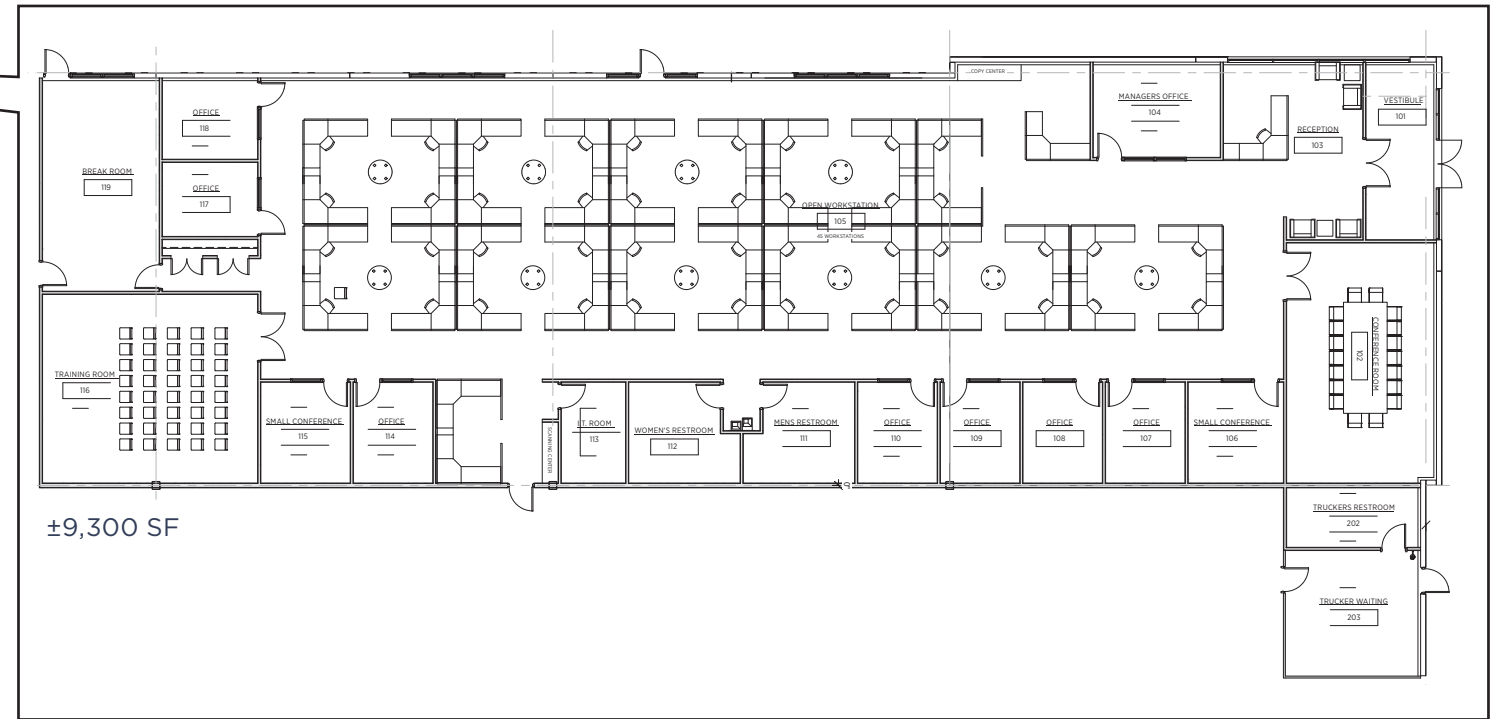
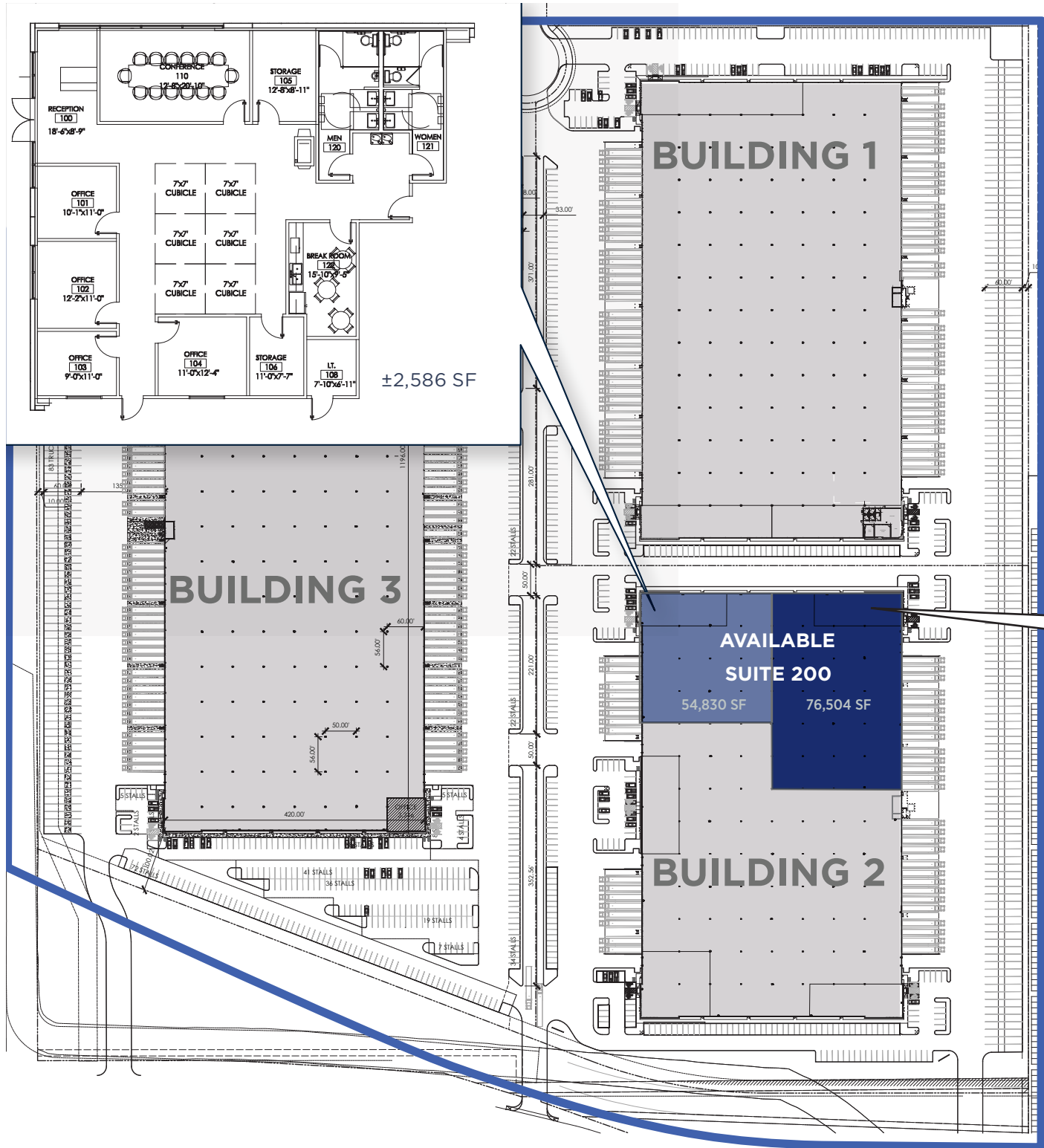
**Travis Healey, SIOR**  
Vice Chair  
801 947 8335  
travis.healey@colliers.com

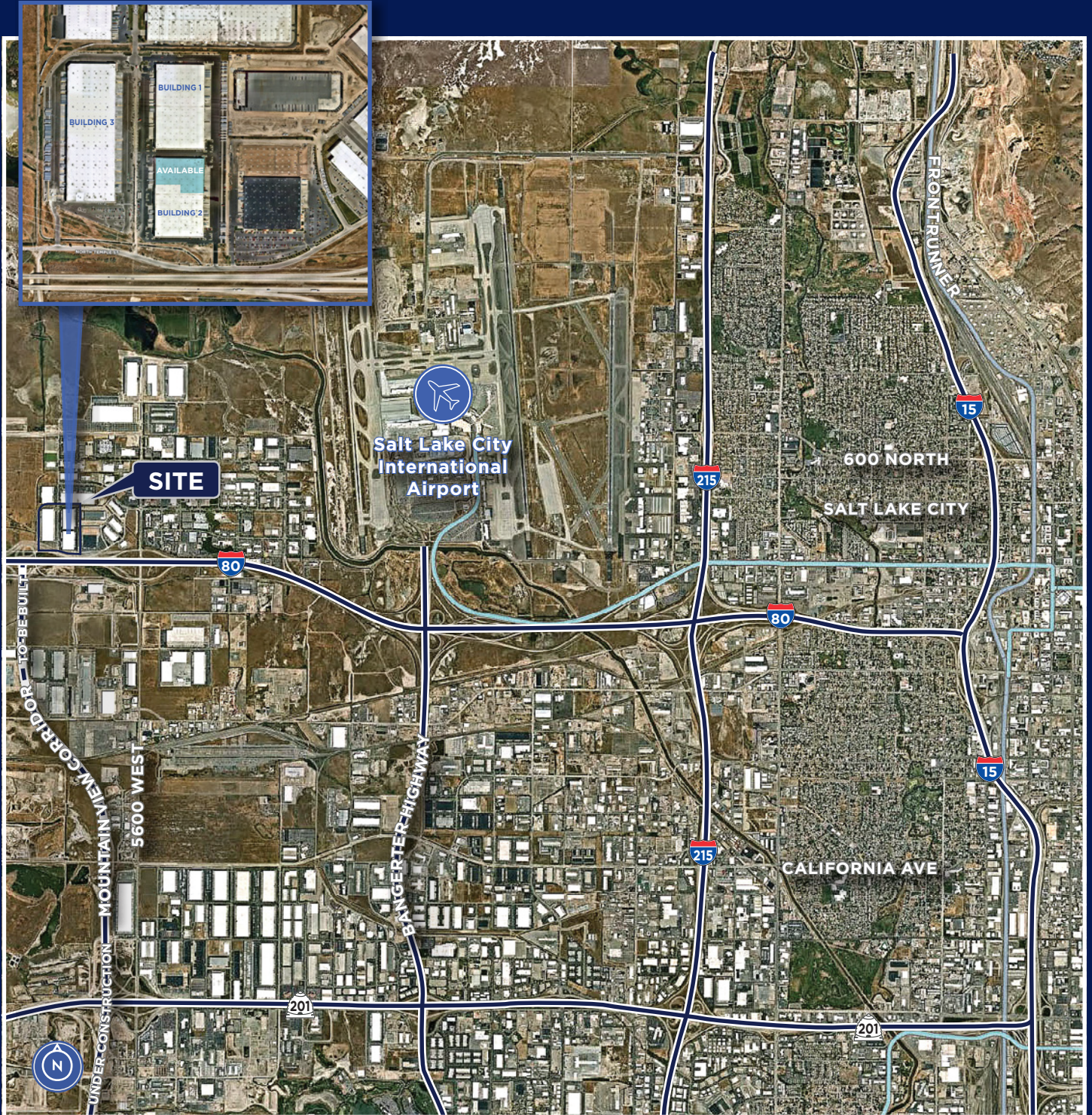
**Jeremy Jensen, SIOR, CCIM**  
Executive Vice President  
801 441 1207  
jeremy.jensen@colliers.com

**Jeremy Terry**  
Vice President  
801 671 9349  
jeremy.terry@colliers.com



# Site & Floor Plans





FOR ANY QUESTIONS, CONTACT THE FREEMAN, HEALEY, & JENSEN INDUSTRIAL TEAM | SLC



**Tom Freeman, SIOR**  
 Vice Chair  
 801 947 8309  
[tom.freeman@colliers.com](mailto:tom.freeman@colliers.com)

**Travis Healey, SIOR**  
 Vice Chair  
 801 947 8335  
[travis.healey@colliers.com](mailto:travis.healey@colliers.com)

**Jeremy Jensen, SIOR, CCIM**  
 Executive Vice President  
 801 441 1207  
[jeremy.jensen@colliers.com](mailto:jeremy.jensen@colliers.com)

**Jeremy Terry**  
 Vice President  
 801 671 9349  
[jeremy.terry@colliers.com](mailto:jeremy.terry@colliers.com)

This document has been prepared by Colliers International for advertising and general information only. Colliers International makes no guarantees, representations or warranties of any kind, expressed or implied, regarding the information including, but not limited to, warranties of content, accuracy and reliability. Any interested party should undertake their own inquiries as to the accuracy of the information. Colliers International excludes unequivocally all inferred or implied terms, conditions and warranties arising out of this document and excludes all liability for loss and damages arising there from. This publication is the copyrighted property of Colliers International and/or its licensor(s). © 2026. All rights reserved.