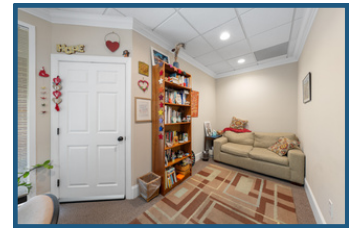


Professional Office Suite For Lease

180 Providence Road Suite 1A, Chapel Hill, North Carolina 27514



- ±1,382 SF professional office suite available August 1, offering a functional layout suited to both individual and group-based practices
- Four private windowed offices plus a large group therapy room, ideal for counseling groups, wellness programming, or collaborative client sessions
- Flexible configuration supporting therapists, behavioral health providers, and other client-focused professionals requiring both private and shared meeting space
- Located within a quiet, established professional office environment designed to support privacy and day-to-day efficiency
- Modified gross lease at \$23.00/SF, with tenants responsible only for internet and janitorial services for predictable occupancy costs



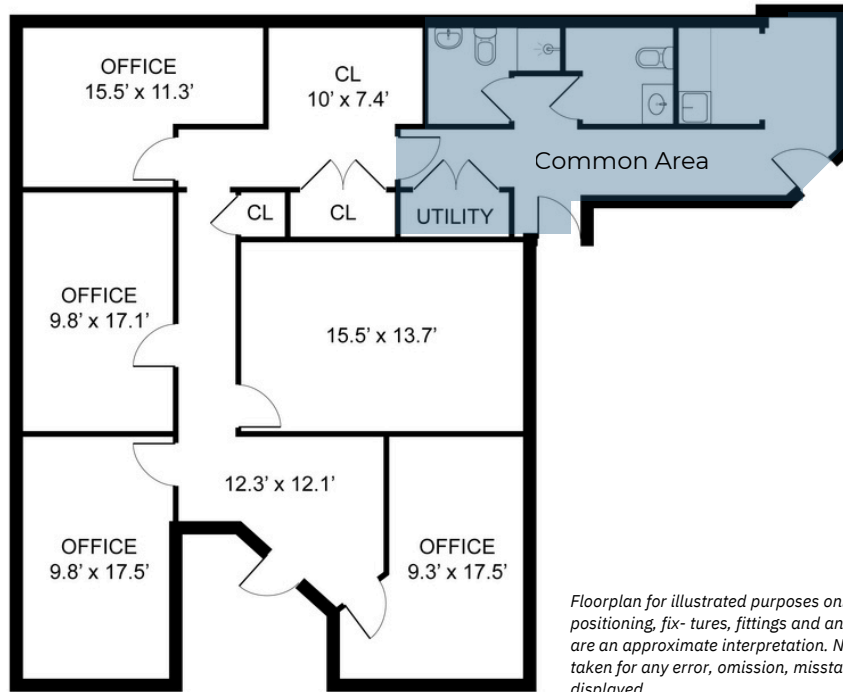
Eric Shriver
919-389-6519
eshriver@morriscommercial.com

John Morris, CCIM
919-417-2492
jmorris@morriscommercial.com



Professional Office Suite For Lease

180 Providence Road Suite 1A, Chapel Hill, North Carolina 27514



Floorplan for illustrated purposes only. Measurements, positioning, fixtures, fittings and any other data shown are an approximate interpretation. No responsibility is taken for any error, omission, misstatement or use of data displayed.



Eric Shriver
919-389-6519
eshriver@morriscommercial.com

John Morris, CCIM
919-417-2492
jmorris@morriscommercial.com

