

ROCK POINTE WEST



ROCK POINTE



Rock Pointe I

OFFICE SPACE FOR LEASE

BUILDING	LEASE RATE	SPACE AVAILABLE
Rock Pointe I	\$22.00 - \$24.00 /RSF	1,150 - 2,113 RSF
Rock Pointe Tower	\$23.00 /RSF	1,119 - 1,216 RSF
Rock Pointe III	\$23.50 /RSF	1,092 - 4,812 RSF

AMENITIES

- Wide variety of space sizes and build-out options
- Ample free parking: 4/1,000, some covered
- Free use of building conference rooms
- Convenient on-site exercise facilities
- Convenient location close to Spokane's Downtown Central Business District

CONTACTS

Craig Soehren
Broker
509.755.7548
craigs@kiemlehagood.com

Erik Nelson, SIOR
Managing Broker
509.755.7514
erik.nelson@kiemlehagood.com

Christian Alfaro
Broker
509.755.7505
christian.alfaro@kiemlehagood.com

**KIEMLE
HAGOOD**

Kiemle Hagood
601 W. Main Avenue, Suite 400
Spokane, WA 99201
509.838.6541

No warranty or representation, expressed or implied, is made by Kiemle Hagood, its agents or its employees as to the accuracy of the information contained herein. All information furnished is from sources deemed reliable and submitted subject to errors, omissions, change of terms and conditions, prior sale, lease or financing, or withdrawal without notice. No one should rely solely on the above information, but instead should conduct their own investigation to independently satisfy themselves. Kiemle Hagood respects the intellectual property of others; if you believe the copyright in your work has been violated through this Website, please contact our office for notice of claims of copyright infringement. For your complaint to be valid under the Digital Millennium Copyright Act of 1998 (DMCA), you must provide the following information when providing notice of the claimed copyright infringement: identify the material on the Website that you believe infringes your work, with enough detail so that we may locate it on the Website; provide your address, telephone number and email address; provide a statement that you have a good faith belief that the disputed use is not authorized by the copyright owner, its agent, or the law; provide a statement that the information in the notification is accurate, and under penalty of perjury, that the complaining party is authorized to act on behalf of the owner of an exclusive right that is allegedly infringed; and provide your physical or electronic signature. Upon receiving your complaint, Kiemle Hagood will, upon review, remove content that you believe infringes your copyright if the complaint is found to be valid.



ROCK POINTE

ROCK POINTE WEST

Rock Pointe I
1212 N. Washington St.



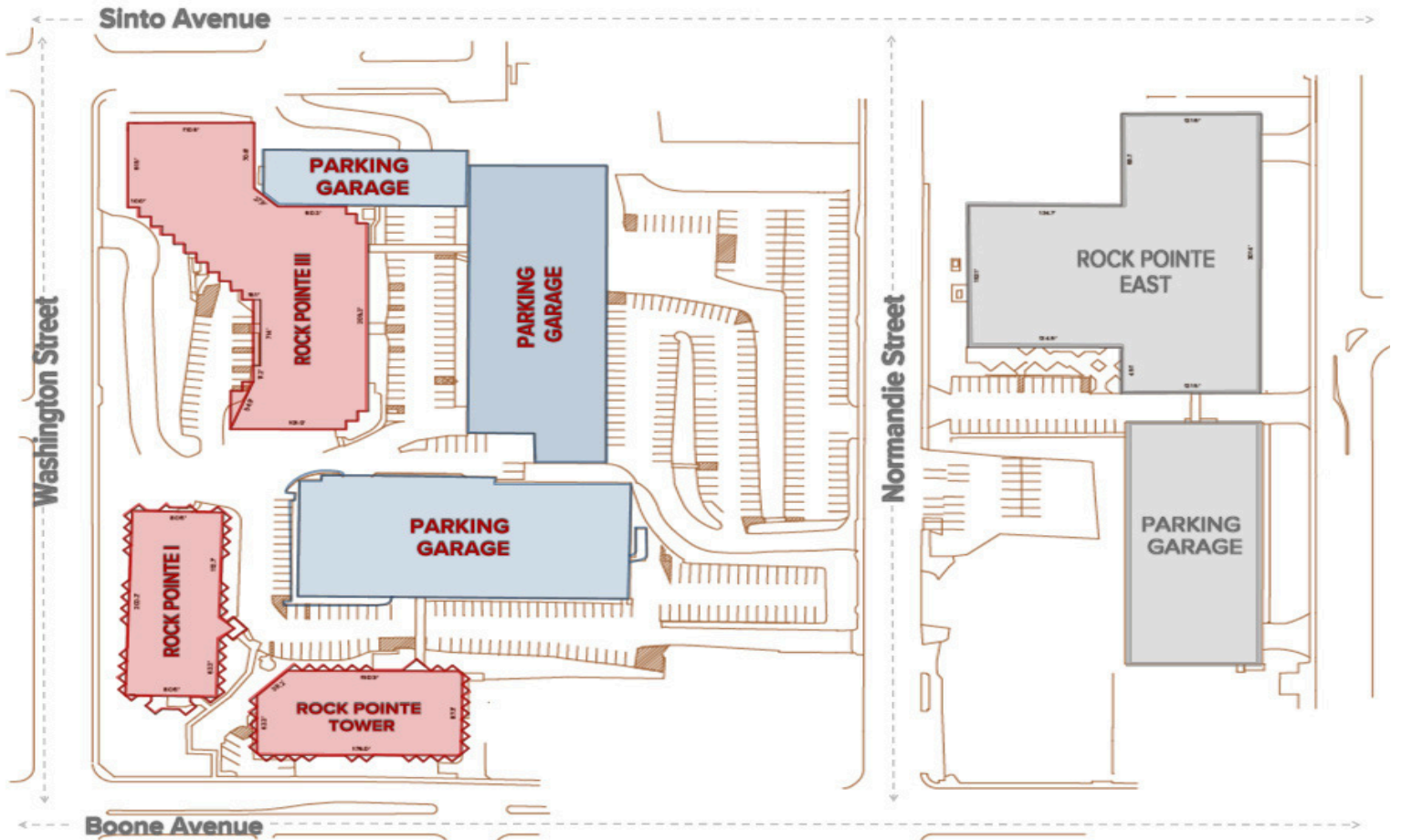
Rock Pointe Tower
316 W. Boone Ave.



Rock Pointe III 1330 N. Washington St.



SITE PLAN



Craig Soehren
Broker
509.755.7548
craigs@kiemlehgood.com

Erik Nelson, SIOR
Managing Broker
509.755.7514
erik.nelson@kiemlehgood.com

Christian Alfaro
Broker
509.755.7505
christian.alfaro@kiemlehgood.com

**KIEMLE
HAGOOD**



ROCK POINTE

No warranty or representation, expressed or implied, is made by Kiemle Hagood, its agents or its employees as to the accuracy of the information contained herein. All information furnished is from sources deemed reliable and submitted subject to errors, omissions, change of terms and conditions, prior sale, lease or financing, or withdrawal without notice. No one should rely solely on the above information, but instead should conduct their own investigation to independently satisfy themselves. Kiemle Hagood respects the intellectual property of others; if you believe the copyright in your work has been violated through this Website, please contact our office for notice of claims of copyright infringement. For your complaint to be valid under the Digital Millennium Copyright Act of 1998 (DMCA), you must provide the following information when providing notice of the claimed copyright infringement: identify the material on the Website that you believe infringes your work, with enough detail so that we may locate it on the Website; provide your address, telephone number and email address; provide a statement that you have a good faith belief that the disputed use is not authorized by the copyright owner, its agent, or the law; provide a statement that the information in the notification is accurate, and under penalty of perjury, that the complaining party is authorized to act on behalf of the owner of an exclusive right that is allegedly infringed; and provide your physical or electronic signature. Upon receiving your complaint, Kiemle Hagood will, upon review, remove content that you believe infringes your copyright if the complaint is found to be valid.

ROCK POINTE WEST

Rock Pointe I
1212 N. Washington Street

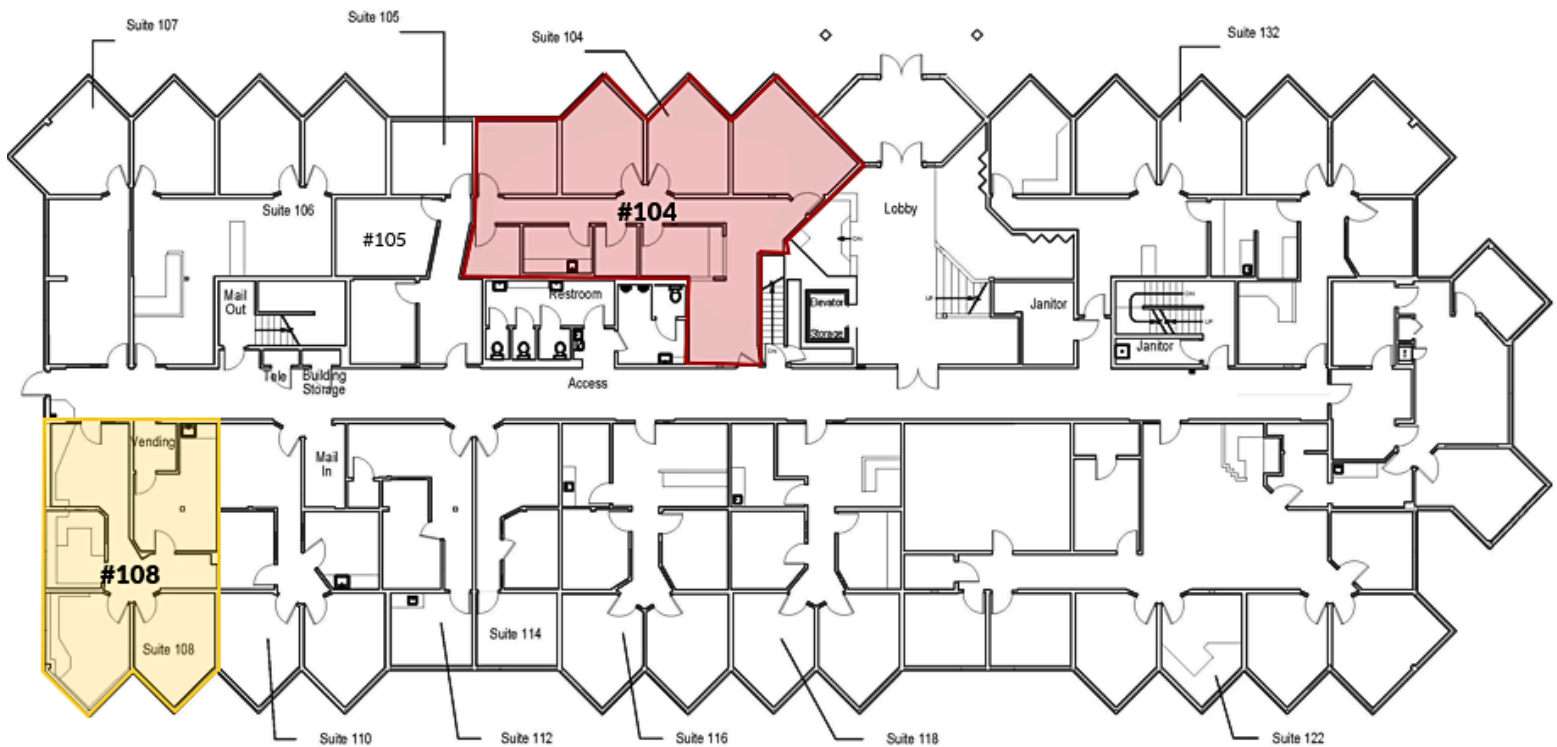


ROCK POINTE

AVAILABLE SPACE

1ST FLOOR

SUITE	LEASE RATE	RSF	DESCRIPTION
#104	\$23.00 /RSF	±1,744	7 Private offices Storage room Conference room
#108	\$24.00 /RSF	±1,150	3 Private offices Conference room



Craig Soehren
Broker
509.755.7548
craigs@kiemlehaood.com

Erik Nelson, SIOR
Managing Broker
509.755.7514
erik.nelson@kiemlehaood.com

Christian Alfaro
Broker
509.755.7505
christian.alfaro@kiemlehaood.com

KIEMLE
HAGOOD

ROCK POINTE WEST

Rock Pointe I
1212 N. Washington Street



ROCK POINTE

AVAILABLE SPACE

3RD FLOOR

SUITE	LEASE RATE	RSF	DESCRIPTION
#325	\$23.00 / RSF	±2,113	Break room 5 private offices



Christian Alfaro
Broker
509.755.7505
christian.alfaro@kiemlehaood.com

Craig Soehren
Broker
509.755.7548
craigs@kiemlehaood.com

Erik Nelson, SIOR
Managing Broker
509.755.7514
erik.nelson@kiemlehaood.com

KIEMLE
HAGOOD

ROCK POINTE WEST

Rock Pointe Tower
316 W. Boone Avenue



ROCK POINTE

AVAILABLE SPACE

3RD FLOOR

SUITE	LEASE RATE	RSF	DESCRIPTION
#354	\$23.00 / RSF	±1,216	Reception Open area 3 Private offices



Craig Soehren
Broker
509.755.7548
craigs@kiemleahagood.com

Erik Nelson, SIOR
Managing Broker
509.755.7514
erik.nelson@kiemleahagood.com

Christian Alfaro
Broker
509.755.7505
christian.alfaro@kiemleahagood.com

KIEMLE
HAGOOD

ROCK POINTE WEST

Rock Pointe Tower
316 W. Boone Avenue

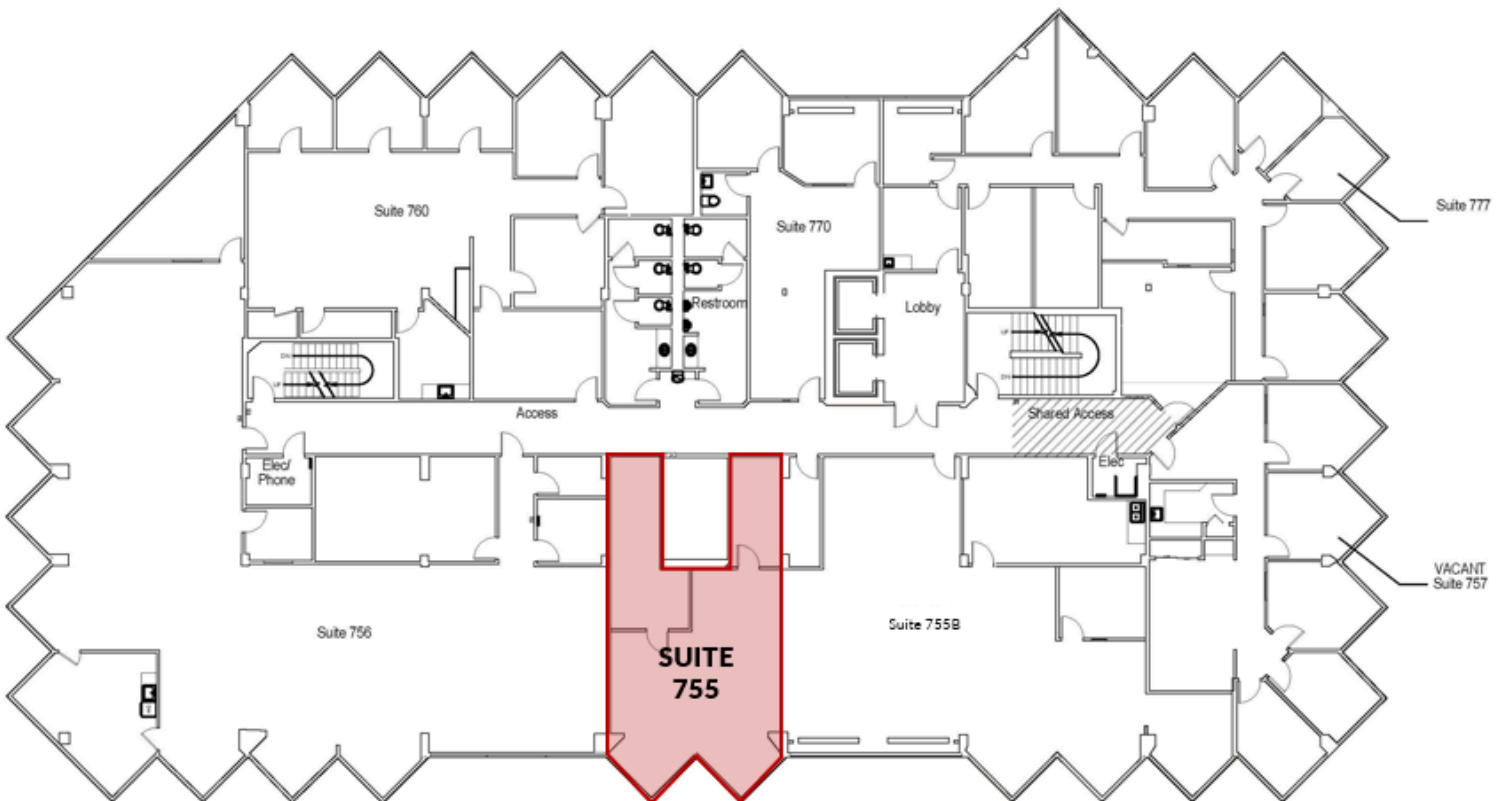


ROCK POINTE

AVAILABLE SPACE

7TH FLOOR

SUITE	LEASE RATE	RSF	DESCRIPTION
#755	\$23.00 / RSF	±1,119	Open Office



Craig Soehren
Broker
509.755.7548
craigs@kiemlehagood.com

Erik Nelson, SIOR
Managing Broker
509.755.7514
erik.nelson@kiemlehagood.com

Christian Alfaro
Broker
509.755.7505
christian.alfaro@kiemlehagood.com

KIEMLE
HAGOOD

ROCK POINTE WEST

Rock Pointe III
1330 N. Washington St

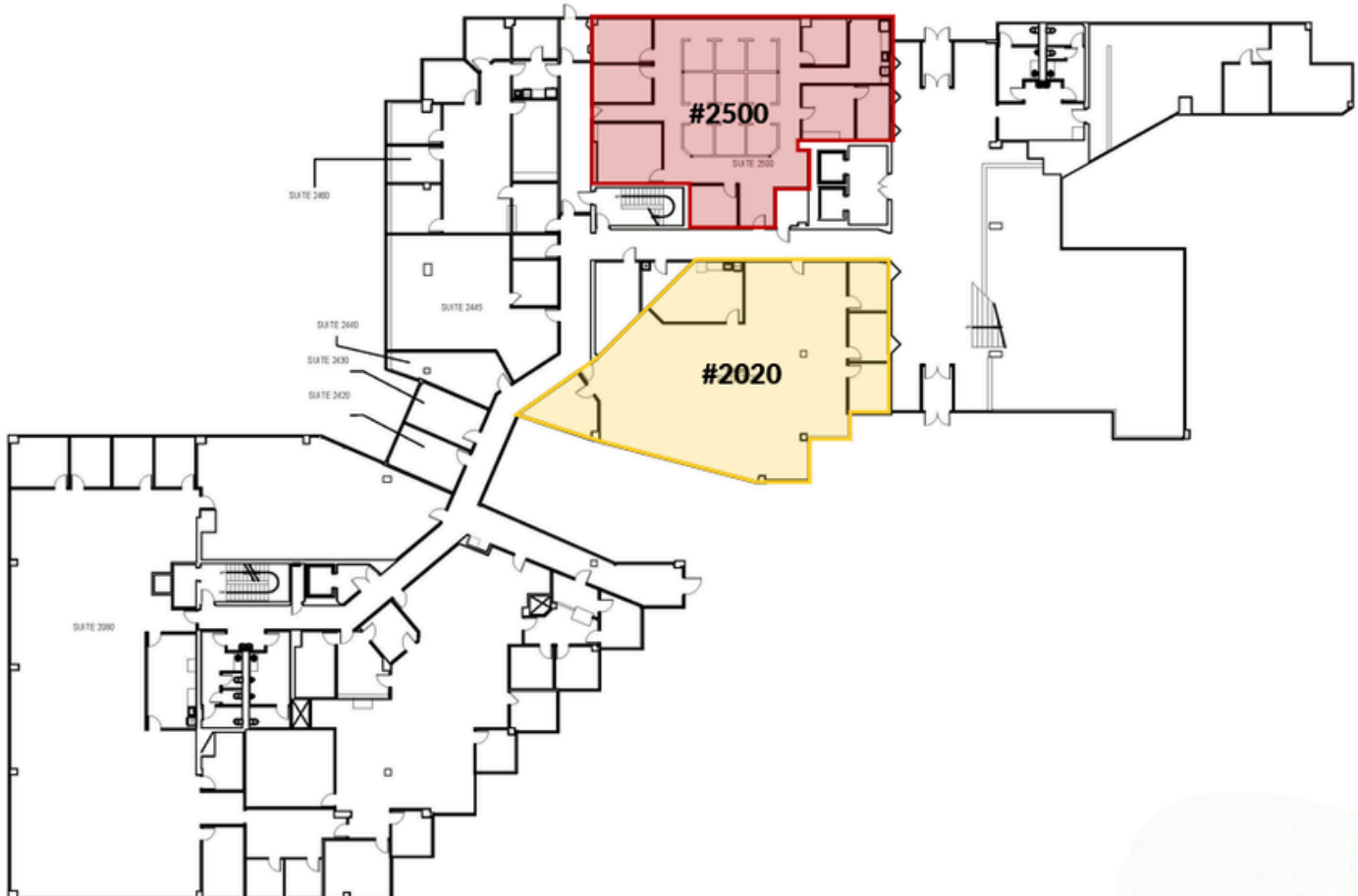


ROCK POINTE

AVAILABLE SPACE

2ND FLOOR

SUITE	LEASE RATE	RSF	DESCRIPTION	SUITE	LEASE RATE	RSF	DESCRIPTION
#2020	\$23.50 / RSF	±3,850	4 private office Open office Break room	#2500	\$23.50 / RSF	±3,461	Private office Open office



Craig Soehren
Broker
509.755.7548
craigs@kiemleahagood.com

Erik Nelson, SIOR
Managing Broker
509.755.7514
erik.nelson@kiemleahagood.com

Christian Alfaro
Broker
509.755.7505
christian.alfaro@kiemleahagood.com

KIEMLE
HAGOOD

ROCK POINTE WEST

Rock Pointe III
1330 N. Washington St

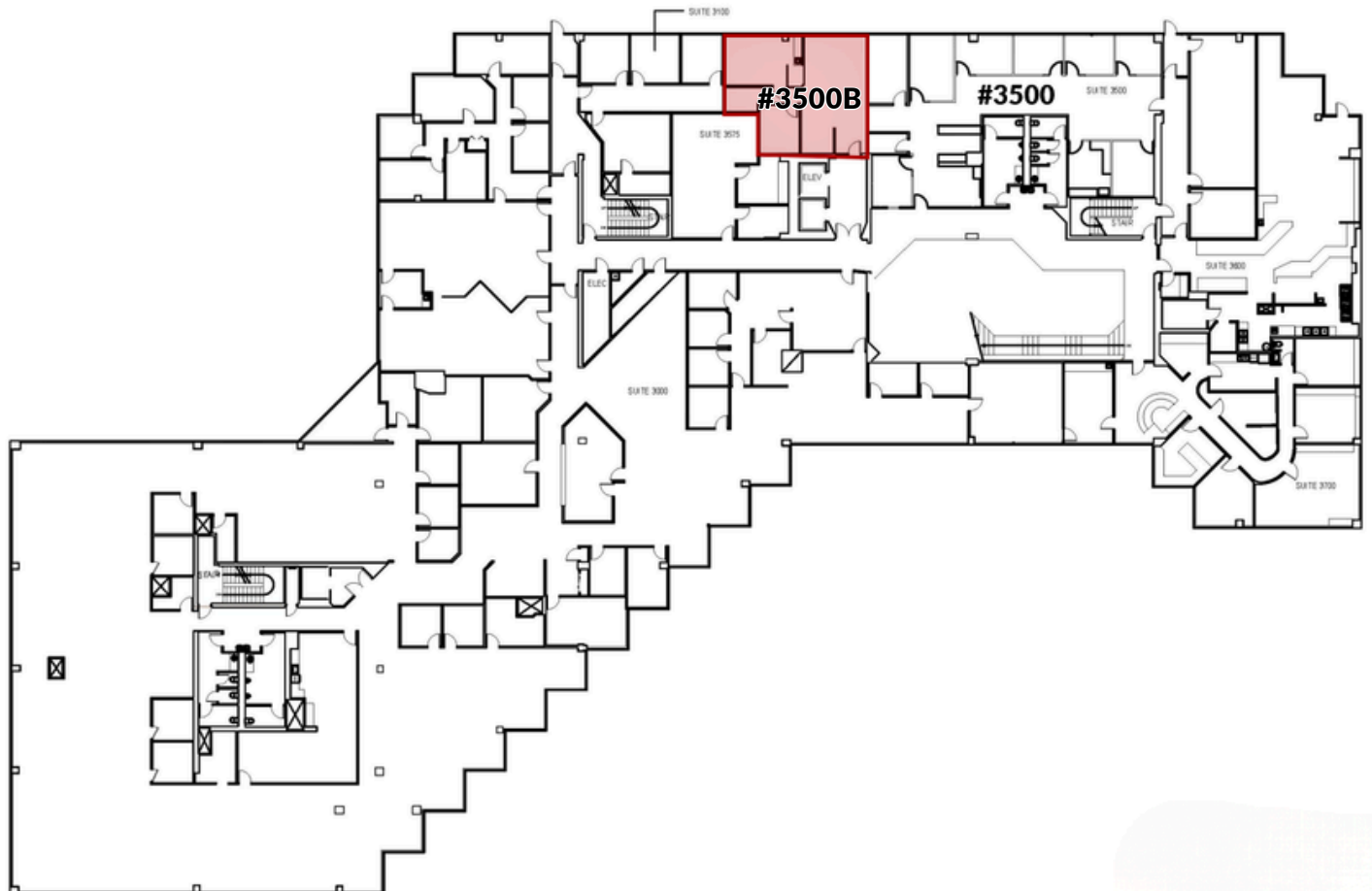


ROCK POINTE

AVAILABLE SPACE

3RD FLOOR

SUITE	LEASE RATE	RSF	DESCRIPTION
#3500B	\$23.50 / RSF	±1,092	1 private office Open office Break room



Craig Soehren
Broker
509.755.7548
craigs@kiemleahagood.com

Erik Nelson, SIOR
Managing Broker
509.755.7514
erik.nelson@kiemleahagood.com

Christian Alfaro
Broker
509.755.7505
christian.alfaro@kiemleahagood.com

**KIEMLE
HAGOOD**

ROCK POINTE WEST

Rock Pointe III
1330 N. Washington St



ROCK POINTE

AVAILABLE SPACE

5TH FLOOR

SUITE	LEASE RATE	RSF	DESCRIPTION	SUITE	LEASE RATE	RSF	DESCRIPTION
#5100	\$23.50 / RSF	±4,812	Reception area Conference room Open area Break room Private office	#5300	\$23.50 / RSF	±4,313	Reception area Conference room Open area Break room 2 private offices



Craig Soehren
Broker
509.755.7548
craigs@kiemlehagood.com

Erik Nelson, SIOR
Managing Broker
509.755.7514
erik.nelson@kiemlehagood.com

Christian Alfaro
Broker
509.755.7505
christian.alfaro@kiemlehagood.com

KIEMLE
HAGOOD