

Colliers

Accelerating success.

FOR LEASE

Production Court

8525 Baxter Place
Burnaby, BC

Ready-to-occupy
office space for lease

A professionally managed
office opportunity in the
heart of Burnaby's business
district

Highlights

- Located within the Production Court Complex
- Walking distance to Lake City / Production Way SkyTrain station or a 2 minute bus connection
- Concrete and steel construction with double glazed, floor-to-ceiling windows
- Views of Lake City
- High-quality finishes throughout
- Parking in front of the building
- On-site fitness facility with showers available to tenants at no charge





DETAILS

Address: 8525 Baxter Place, Burnaby, BC

Unit: 103

Size: 3,065 SF

Available: October 1, 2026

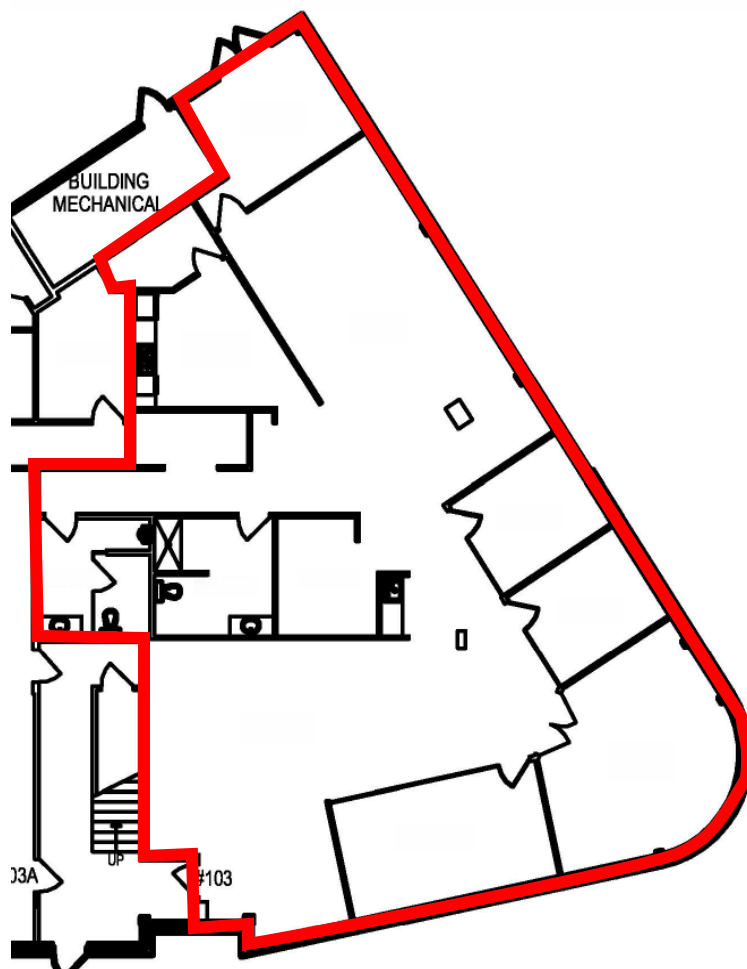
Parking: 2.7 stalls per 1,000 SF Leased
\$75.00/stall/month (Random)*
\$95.00/stall/month (Reserved)*
**plus applicable taxes*

Net Rent: Please contact the listing agent

Add. Rent (2026 est.): \$18.75 PSF per annum

Details:

- Three offices
- Two meeting rooms
- Large kitchen
- Private washrooms



Rob Chasmar
Personal Real Estate Corporation
Senior Vice President
+1 604 661 0822
Rob.Chasmar@colliers.com

Colliers International
1067 West Cordova Street, Suite 1100
Vancouver, BC V6C 1C7
Main: +1 604 681 4111