

# RANGER 35

COMMERCE CENTER

LEASING AND BUILD-TO-SUIT  
OPPORTUNITIES AVAILABLE

## MASTER PLAN

UP TO ±3.2M SF  
AVAILABLE

WAXAHACHIE, TX



- Three-building, master-planned project
- Direct access to I-35
- 40' - 43' clear heights and 190' truck courts
- Ample auto and trailer parking
- Heavy utilities
- Access to a strong labor pool

# MASTER SITE PLAN



# HIGHWAY NETWORK



## DRIVE TIMES

I-35

<1 mi. 1 min.

I-20

15 mi. 17 min.

I-45

17 mi. 23 min.

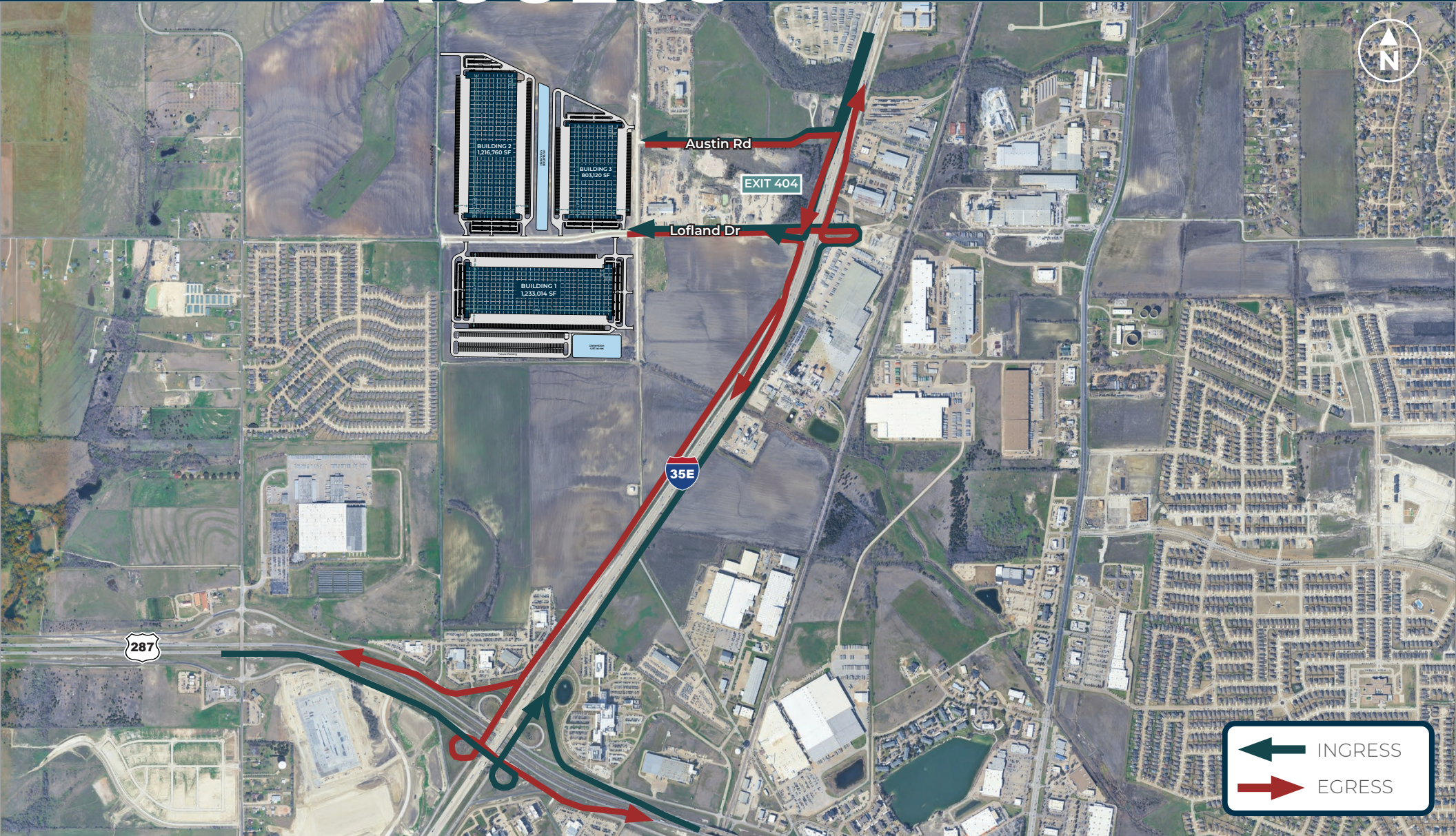
Dallas-Fort Worth Int'l Airport

42 mi. 44 min.

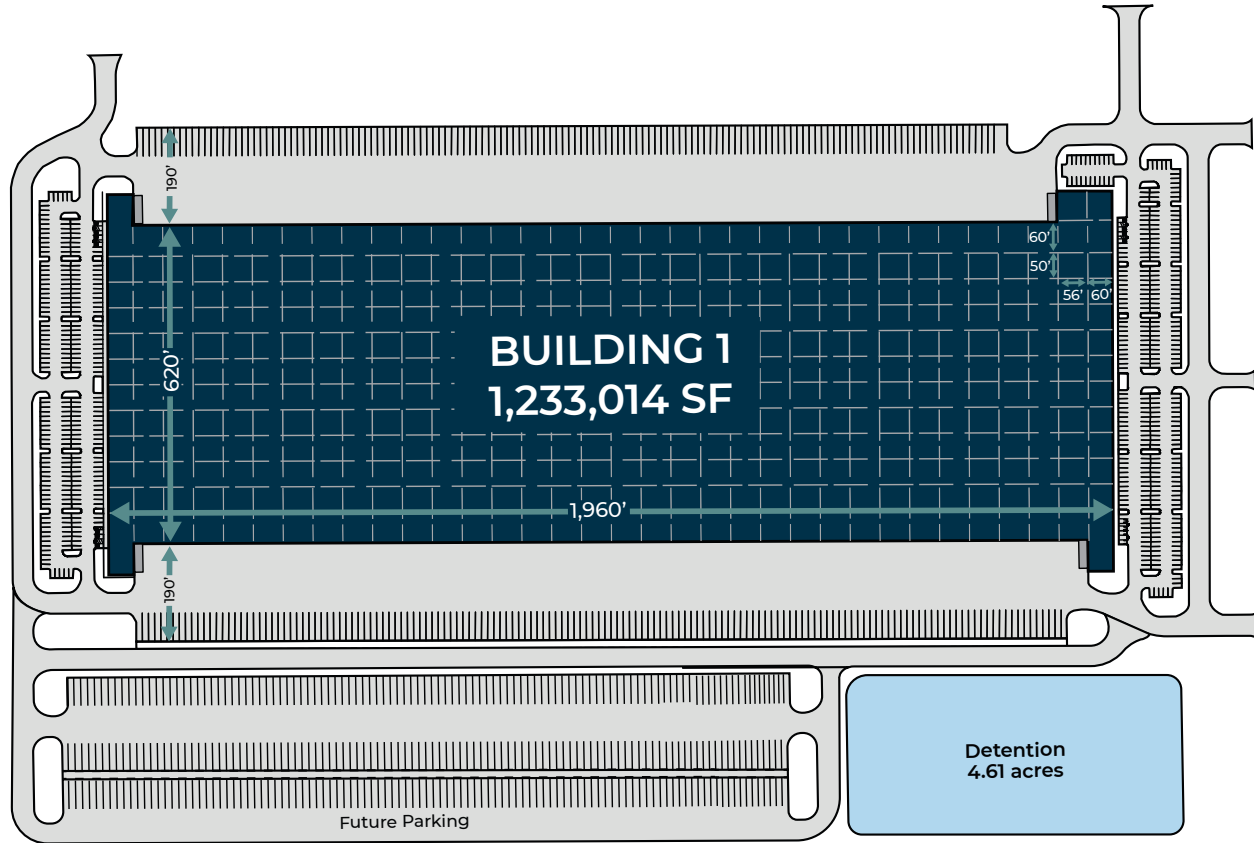
# AREA INFORMATION



# SITE ACCESS



# SITE PLAN BUILDING 1

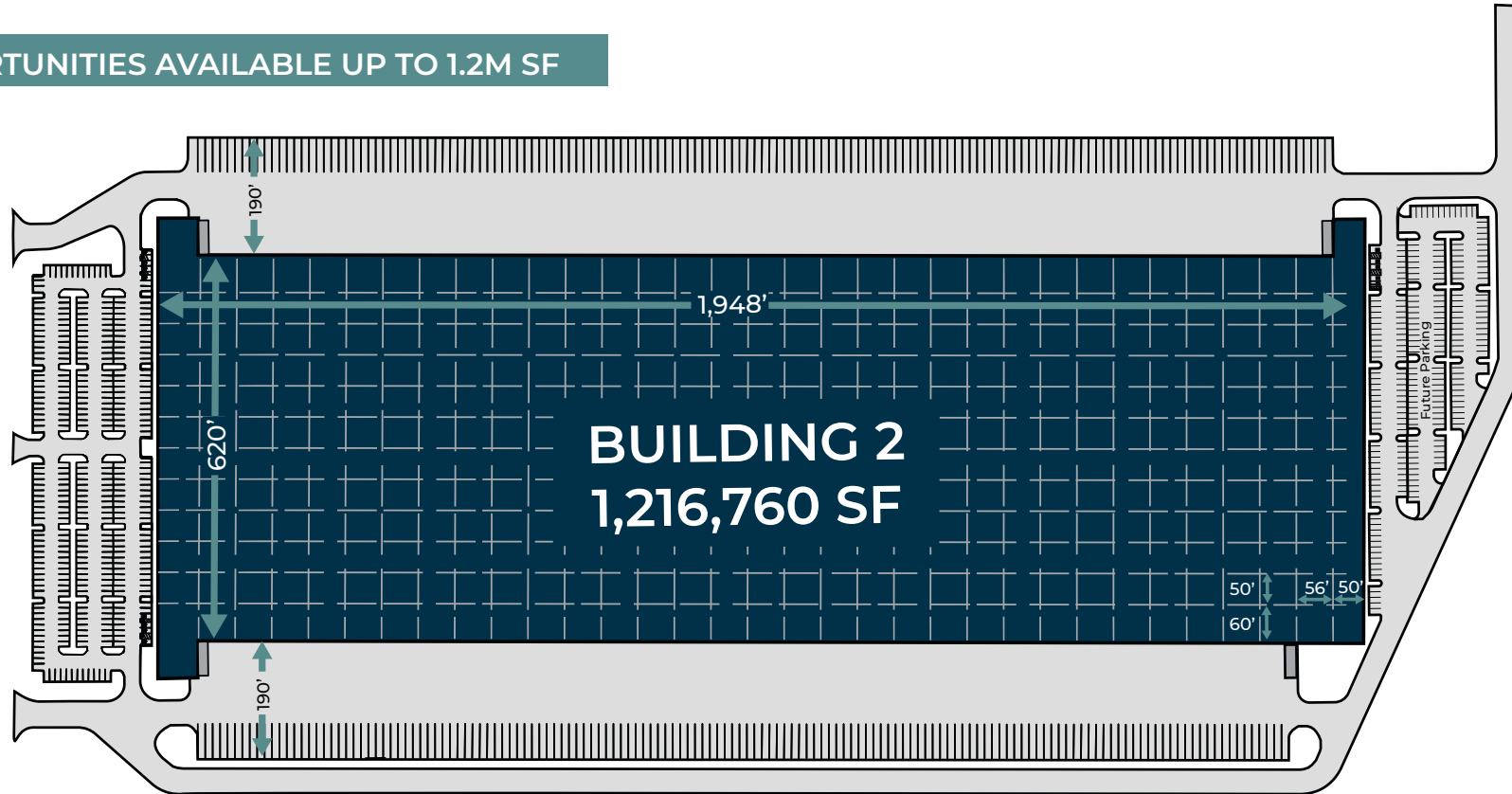


## BUILDING DETAILS

<b>Available SF</b>	1,233,014 SF	<b>Column Spacing</b>	50' deep x 56' wide	<b>Fire Protection</b>	ESFR- K-28 with 9 heads operating
<b>Site Area</b>	92.20 Acres	<b>Staging Bays</b>	60' deep	<b>Truck Court</b>	190' deep
<b>Configuration</b>	Cross-Dock	<b>Dock Doors</b>	215 - 9' x 10' truck doors	<b>Auto Parking</b>	574 spaces
<b>Building Dimensions</b>	620' x 1,960'	<b>Drive-In Ramps</b>	4 - 14' x 16' drive-in doors	<b>Trailer Parking</b>	289 spaces
<b>Clear Height</b>	43'	<b>Concrete</b>	8" thick, fully reinforced	<b>Future Trailer Parking</b>	354 spaces
<b>Electrical</b>	277/480 volt, 3-phase, 4-wire system 4000A tap can	<b>Lighting</b>	2 - LED high bay fixtures per bay	<b>Roof</b>	45 Mil TPO single-ply

# SITE PLAN BUILDING 2

BTS OPPORTUNITIES AVAILABLE UP TO 1.2M SF

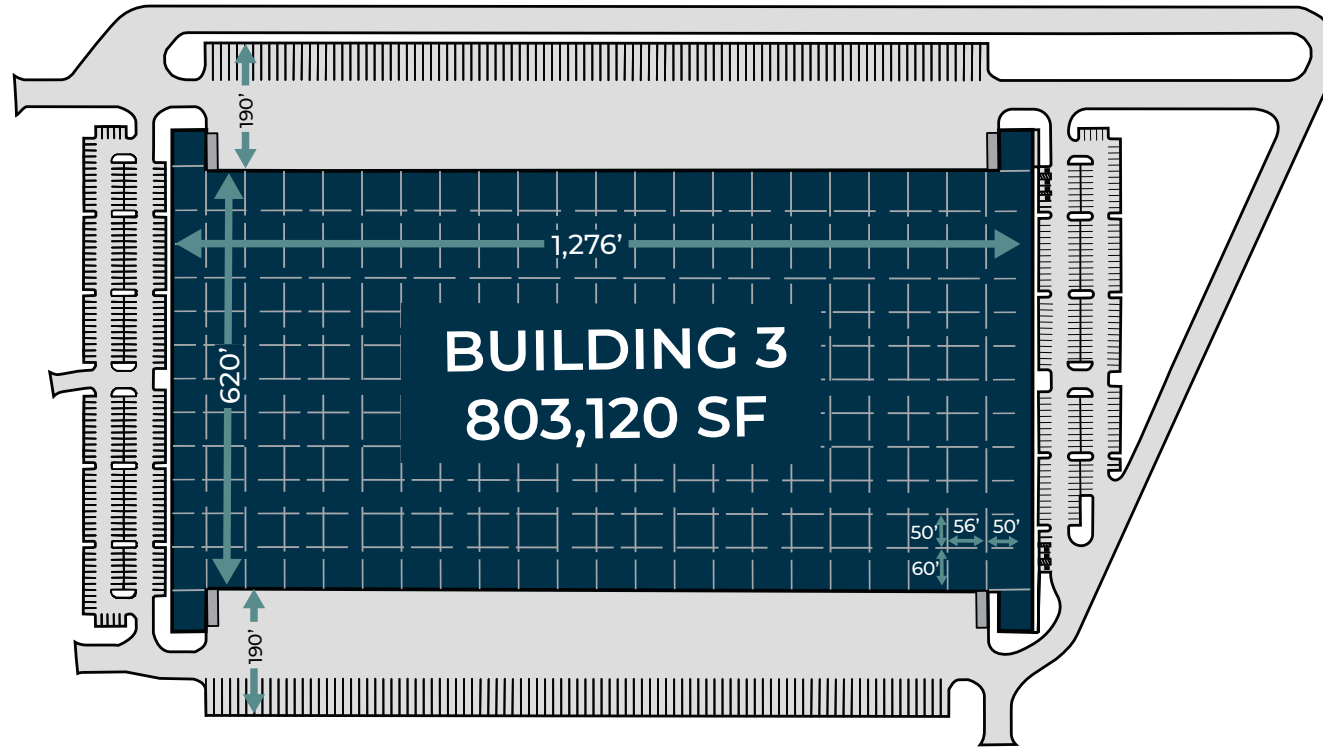


## BUILDING DETAILS

Available SF	1,216,760 SF	Column Spacing	50' deep x 56' wide	Fire Protection	ESFR- K-28 with 9 heads operating
Site Area	69.69 Acres	Staging Bays	60' deep	Truck Court	190' deep
Configuration	Cross-Dock	Dock Doors	216 - 9' x 10' truck doors	Auto Parking	462 spaces
Building Dimensions	620' x 1,948'	Drive-In Ramps	4 - 14' x 16' drive-in doors	Future Auto Parking	152 spaces
Clear Height	43'	Concrete	7" thick	Trailer Parking	301 spaces
Electrical	4000A Tap Can	Lighting	2 - LED high bay fixtures per bay		

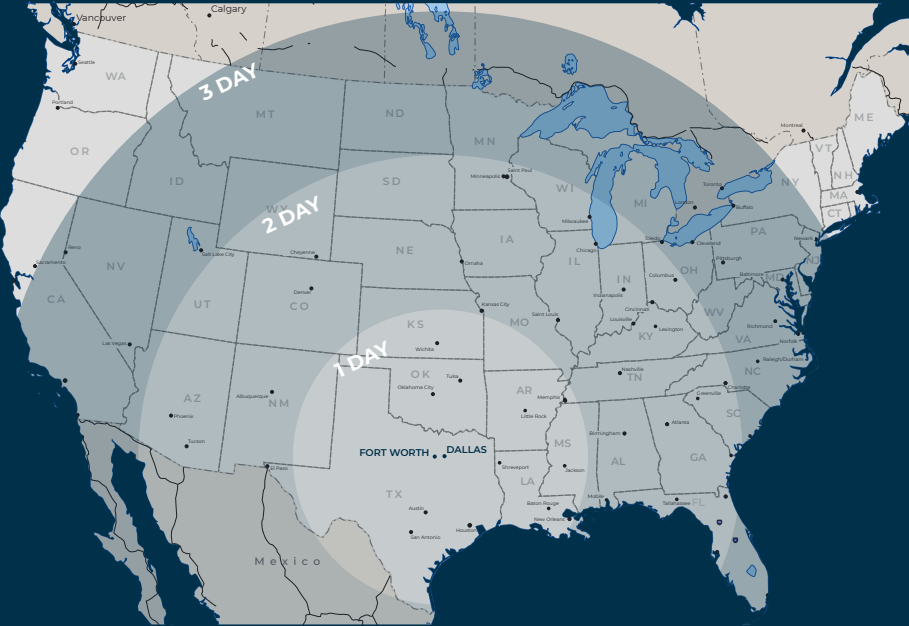
# SITE PLAN BUILDING 3

BTS OPPORTUNITIES AVAILABLE UP TO 800K SF



## BUILDING DETAILS

<b>Available SF</b>	803,120 SF	<b>Column Spacing</b>	50' deep x 56' wide	<b>Fire Protection</b>	ESFR- K-25 with 12 heads flowing
<b>Site Area</b>	44.28 Acres	<b>Staging Bays</b>	60' deep	<b>Truck Court</b>	190' deep
<b>Configuration</b>	Cross-Dock	<b>Dock Doors</b>	136 - 9' x 10' truck doors	<b>Auto Parking</b>	466 spaces
<b>Building Dimensions</b>	620' x 1,276'	<b>Drive-In Ramps</b>	4 - 14' x 16' drive-in doors	<b>Trailer Parking</b>	189 spaces
<b>Clear Height</b>	40'	<b>Concrete</b>	7" thick, reinforced	<b>Lighting</b>	2 - LED high bay fixtures per bay
<b>Electrical</b>	4000A Tap Can				



**INTERSTATE**

I-35	Less than 1 mile
I-20	15 miles
I-45	17 miles

**INTERMODAL**

Union Pacific Intermodal (Hutchins)	23 miles
Union Pacific Intermodal (Mesquite)	36 miles
BNSF Intermodal (Alliance Airport)	56 miles

**AIR**

Dallas Love Field Airport	31 miles
Dallas-Fort Worth Int'l Airport	42 miles

**PORT CITIES**

Port of Houston	225 miles
Port Arthur	325 miles
Port of Lake Charles	330 miles
Port of Corpus Christi	360 miles

# DALLAS / FORT WORTH

A PREMIER, CENTRAL LOGISTICS HUB

DFW International Airport ranks among the world's busiest airports

Home to Alliance Airport, the world's first 100% industrial airport

Nealy equidistant from the East Coast and the West Coast

Over 10,000 freight routes in the state of Texas

Confluence of four major interstates - I-20, I-30, I-35 and I-45

Five Foreign-Trade Zones

## LOGISTICS HIGHLIGHTS

Dallas-Fort Worth is one of the nation's most powerful logistics hubs, offering unmatched connectivity, a central U.S. location, and a deep industrial infrastructure that enables companies to move products faster and more efficiently. With a strong labor force and seamless access to air, rail, and highway networks, DFW gives businesses a strategic advantage that few markets can match.

Ranger 35 Commerce Center sits directly on I-35, giving users seamless access to the region's unmatched connectivity and powerful transportation networks.



## DEVELOPMENT



3000 Turtle Creek Blvd  
Dallas, TX 75219  
hillwood.com

### **Matt Walker**

972 201 2872 (o) | 559 903 1171 (c)  
matthew.walker@hillwood.com

### **Chad Akabane**

925 337 1244 (c)  
chad.akabane@hillwood.com

## LEASING



2001 Ross Avenue | Ste 400  
Dallas, TX 75201  
streamrealty.com

### **Matt Dornak**

214 267 0461 (o)  
mdornak@streamrealty.com

### **Ridley Culp**

214 267 0400 (o)  
ridley.culp@streamrealty.com



This information has been obtained from sources believed reliable, but has not been verified for accuracy or completeness. You should conduct a careful, independent investigation of the property and verify all information. Any reliance on this information is solely at your own risk. Hillwood and the Hillwood logo are service marks of Hillwood. All other marks displayed on this document are the property of their respective owners, and the use of such logos does not imply any affiliation with or endorsement of Hillwood. Photos herein are the property of their respective owners. Use of these images without the express written consent of the owner is prohibited.