



Keegan & Coppin
COMPANY, INC.

FOR LEASE

25-35-45-55 MITCHELL BLVD.
SAN RAFAEL, CA

Best Office Location
in Central Marin



REPRESENTED BY:

JOHN MOHUN, AGENT
LIC # 02232254 (415) 461-1010, EXT 126
JMOHUN@KEEGANCOPPIN.COM



OFFICE SPACE FOR LEASE



25-35-45-55 MITCHELL BLVD.
SAN RAFAEL, CA

**BEST OFFICE LOCATION
IN CENTRAL MARIN**

PROPERTY INFORMATION

HIGHLIGHTS

- Excellent location
- Abundant parking
- Easy access to local amenities
- Medical uses permitted
- Shared conference room facilities

OFFICE SPACE

25 Mitchell, Suite 2: 1,370+/- sq ft

25 Mitchell, Suite 3: 690+/- sq ft

45 Mitchell, Suite 10: 709+/- sq ft

45 Mitchell, Suite 14: 1,081+/- sq ft

45 Mitchell, Suite 16: 1,355+/- sq ft

DESCRIPTION

4 private offices, open area, reception, private bathroom and kitchenette.

2 private offices, storage room, reception and private bathroom.

2 private offices and a reception area.

2 private offices, reception area, and kitchenette.

Mostly open floor plan, kitchenette, one private office.

LEASE TERMS

Size range

690 - 1,370+/- sq ft

Rate

\$1.95 per sq ft

Terms

Gross

Parking

4:1000

Zoning

LI/O

Keegan & Coppin Co., Inc.
101 Larkspur Landing Circle, Ste. 112
Larkspur, CA 94939
www.keegancoppin.com
(415) 461-1010

The above information, while not guaranteed, has been secured from sources we believe to be reliable. Submitted subject to error, change or withdrawal. An interested party should verify the status of the property and the information herein.

REPRESENTED BY:

JOHN MOHUN, AGENT
LIC # 02232254 (415) 461-1010, EXT 126
JMOHUN@KEEGANCOPPIN.COM



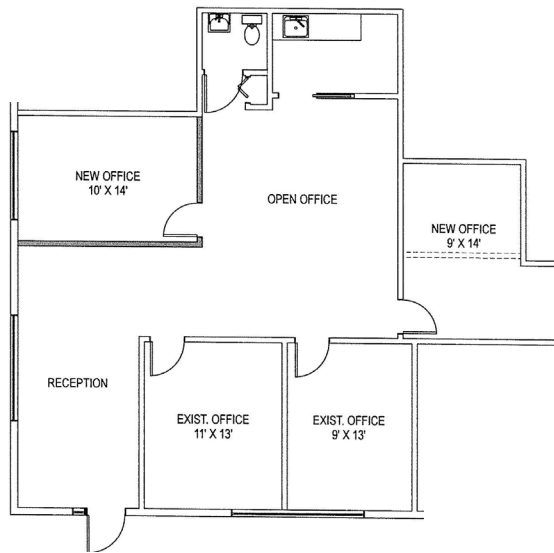
FLOOR PLANS



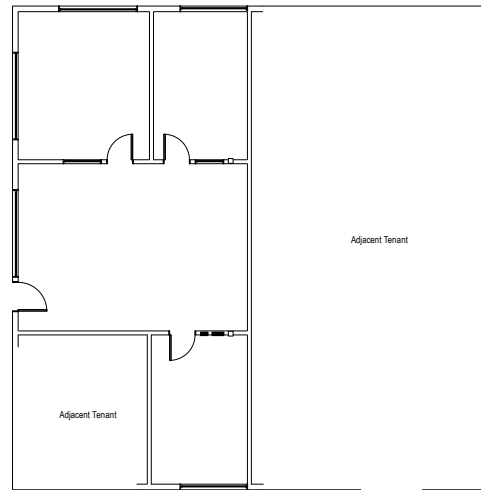
25-35-45-55 MITCHELL BLVD.
SAN RAFAEL, CA

**BEST OFFICE LOCATION
IN CENTRAL MARIN**

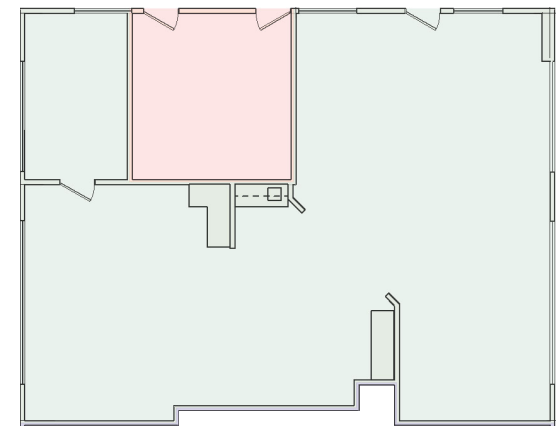
25 MITCHELL, SUITE 2
1,370+/- RSF



45 MITCHELL, SUITE 14
1,081+/- RSF



45 MITCHELL, SUITE 16
1,355+/- RSF



REPRESENTED BY:

JOHN MOHUN, AGENT
KEEGAN & COPPIN CO., INC.
LIC # 02232254 (415) 461-1010, EXT 126
JMOHUN@KEEGANCOPPIN.COM