



Accelerating success.



Mountain View Office

660 South 200 East
Salt Lake City, Utah 84111

Property Highlights

- Suite 104: 1,232 SF | \$17.00 SF
- Suite 400: 22,128 SF | \$22.00 SF
- Recent renovations completed to grand lobby & common areas
- Great downtown location
- Free covered parking - 433 stalls (70% covered)
- Up to 124 stalls secured
- Convenient freeway access and close to the courthouses
- 2 Blocks from TRAX stop
- Lease Rate: \$17.00-\$22.00/SF Full Service, excluding in-suite janitorial

For Lease

Lease Rate:

\$17 - 22/SF

Full Service

Less in-suite janitorial

Contact:

Rusty Lugo

Vice President
+1 801 947 8377
rusty.lugo@colliers.com



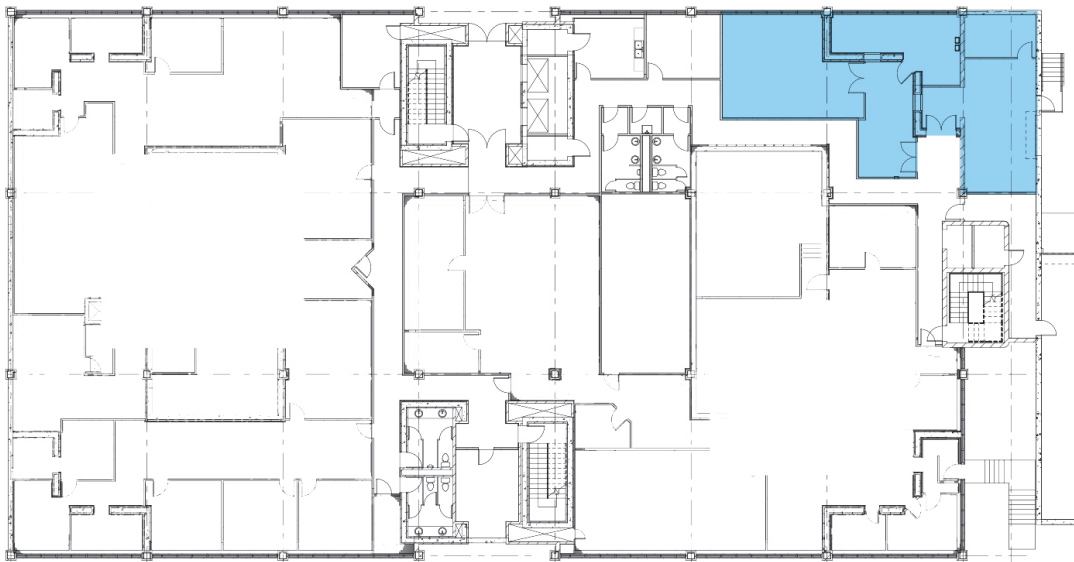
James Burgess
+1 801 262 3660
james@theburgessco.com

Colliers

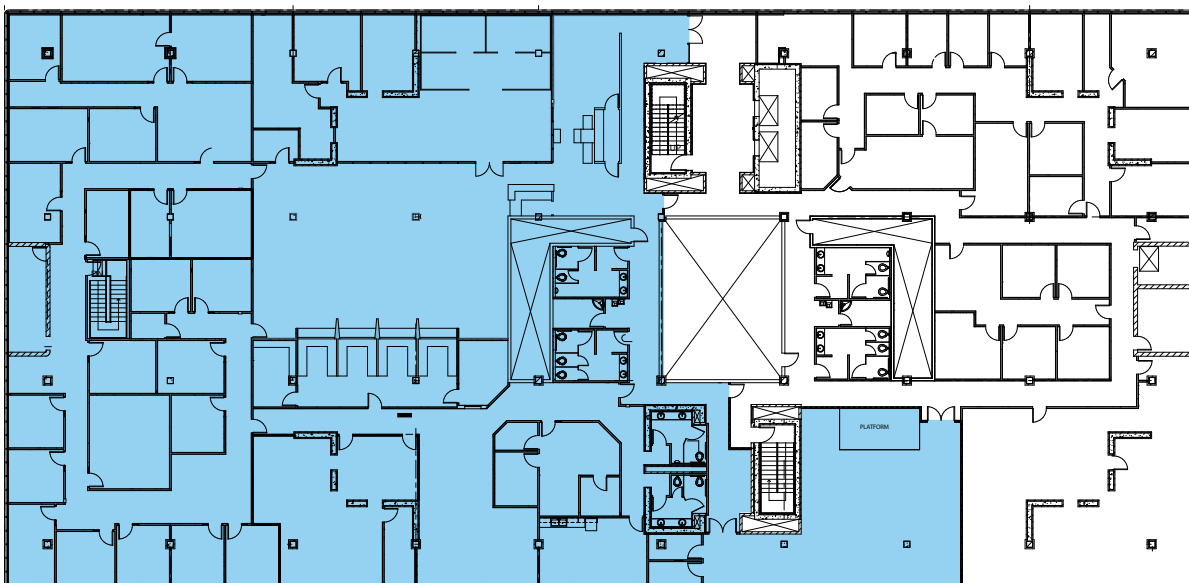
111 S. Main St., Suite 2200
Salt Lake City, UT 84111
Main: +1 801 947 8300
colliers.com

Floor Plan

1st Floor | 1,232 SF Available



4th Floor | 22,128 SF Available



660 South 200 East | Salt Lake City

For Lease



Colliers
 111 S. Main St., Suite 2200
 Salt Lake City, UT 84111
 Main: +1 801 947 8300
 colliers.com

Contact:

Rusty Lugo
 Vice President
 +1 801 947 8377
 rusty.lugo@colliers.com



James Burgess
 +1 801 262 3660
 james@theburgessco.com