

FOR LEASE

THE TEACHOUT BUILDING

500 E LOCUST ST DES MOINES, IA 50309



PROPERTY DESCRIPTION

The Teachout Building, built in 1912, was placed on the National Register of Historic Places in 1999 after it underwent a significant renovation. Located in the heart of the East Village, at the foot of the State Capitol, this dynamic space places Tenants in the middle of the action.

PROPERTY HIGHLIGHTS

- Six-story historic, mixed-use building located in the heart of the East Village
- 1,920 square feet of open office concept available on the fourth floor
- Easily accessible by foot, bike and car, plus it's on the DART bus route
- Unique architecture and finishes throughout
- Co-Tenants include Up-Down DSM, Ivory House Photography and Red Door Photo

OFFERING SUMMARY

Lease Rate:	\$16.50 SF/yr (MG)
Number of Units:	6
Available SF:	1,920 SF
Lot Size:	0.063 Acres
Building Size:	19,500 SF

DEMOGRAPHICS	0.5 MILES	1 MILE	1.5 MILES
Total Households	1,280	5,865	11,277
Total Population	1,953	9,534	21,185



PAT SCHNEIDER

515.309.0903
pat@fergusoncres.com

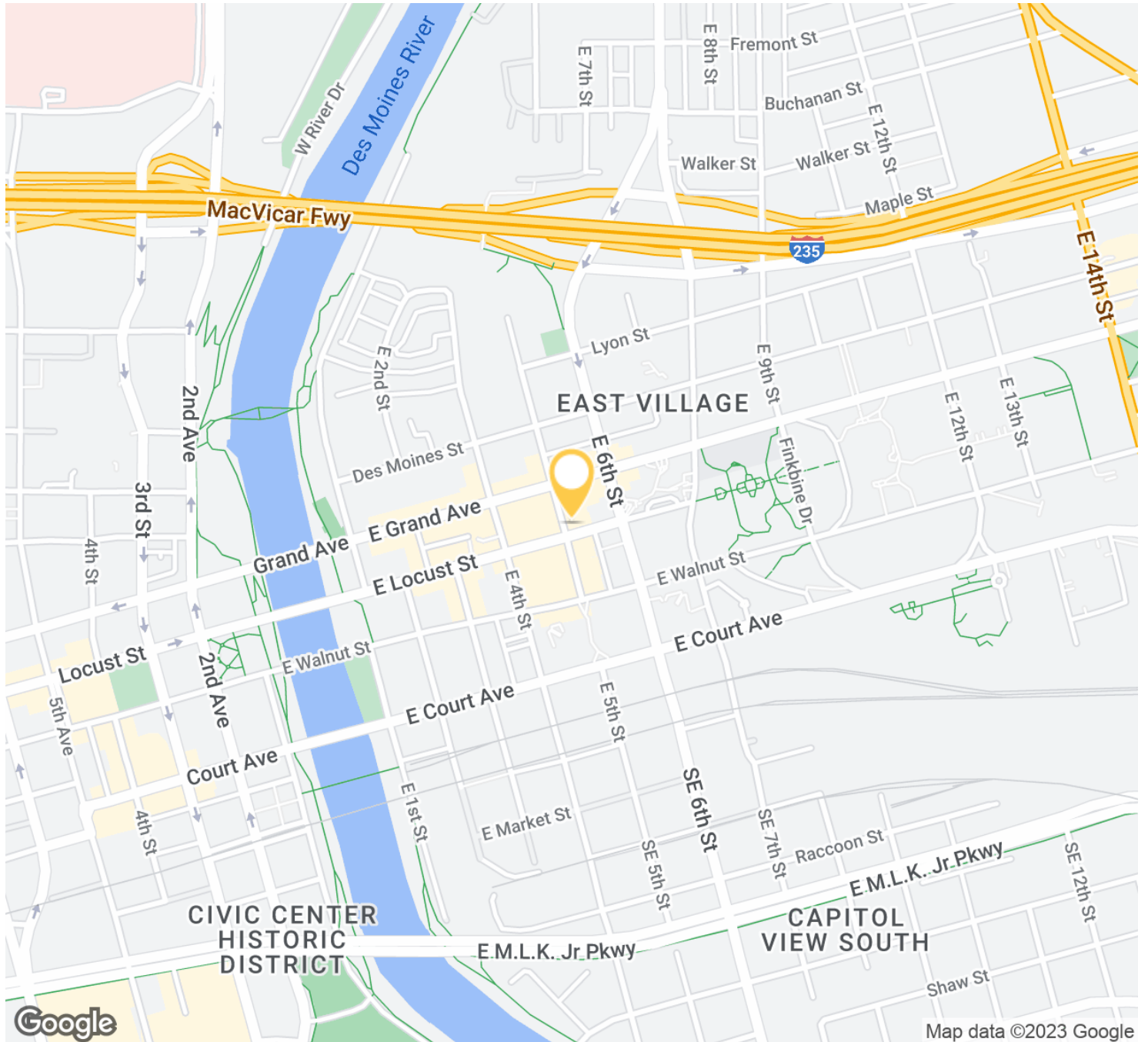
BEN BRACKETT

515.556.4596
ben@fergusoncres.com

FOR LEASE

THE TEACHOUT BUILDING

500 E LOCUST ST DES MOINES, IA 50309



PAT SCHNEIDER

515.309.0903
pat@fergusoncre.com

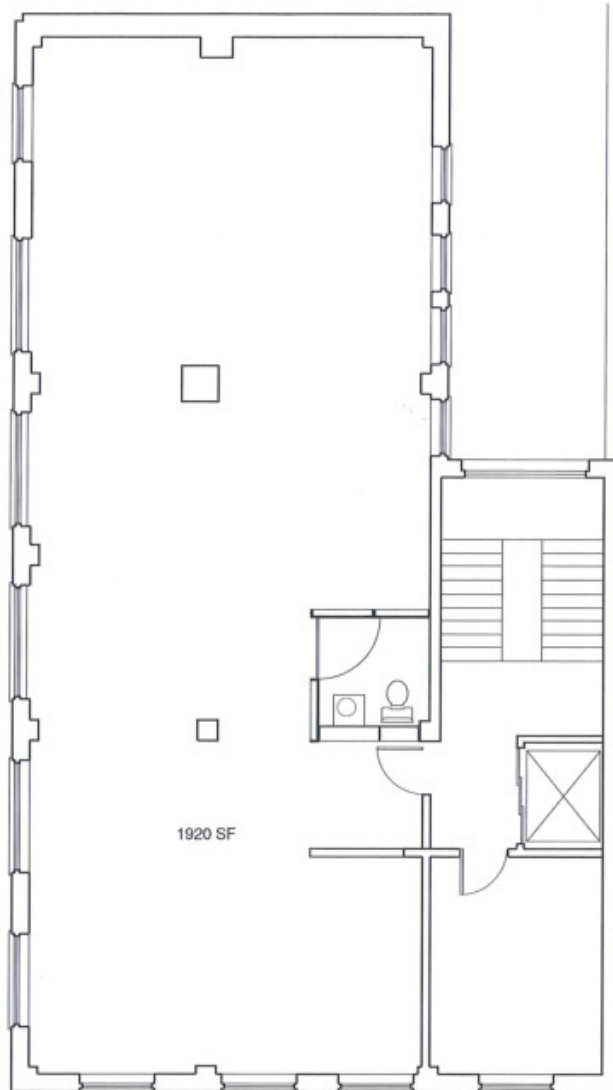
BEN BRACKETT

515.556.4596
ben@fergusoncre.com

FOR LEASE

THE TEACHOUT BUILDING

500 E LOCUST ST DES MOINES, IA 50309



A1 | TEACHOUT 4TH FLOOR PLAN

1/8" = 1'-0"

Job. No. :

knowles | hunk | architecture

TEACHOUT BUILDING
DES MOINES, IOWA



Ferguson

Commercial Real Estate Services

fergusoncres.com

PAT SCHNEIDER

515.309.0903
pat@fergusoncres.com

BEN BRACKETT

515.556.4596
ben@fergusoncres.com