

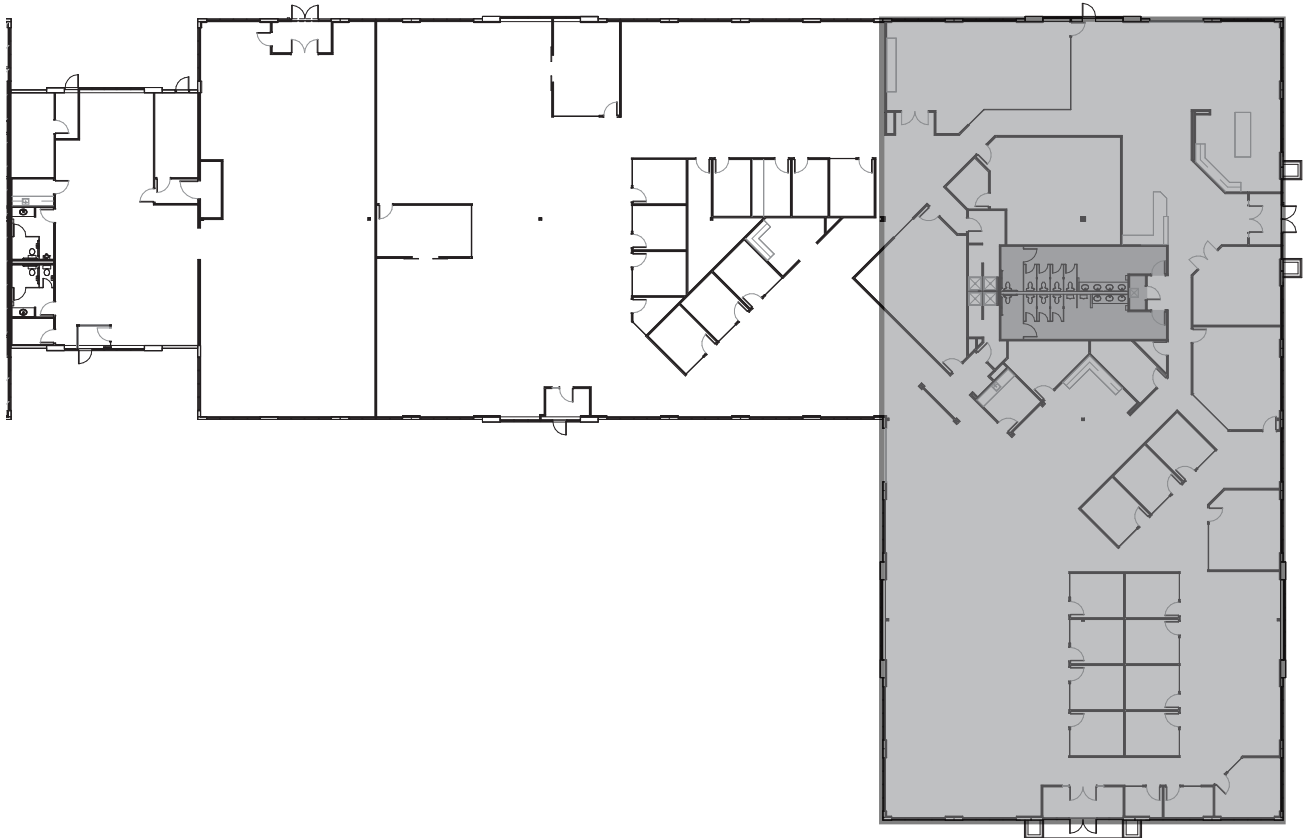


GATEWAY centre



FLYWHEEL CAPITAL

## FOUR GATEWAY CENTRE



SUITE 40 - 16,123 RSF

CLASS A OFFICE FOR LEASE, FOR INFORMATION CONTACT:

W. Ryan Stout

303.813.6448

ryan.stout@cushwake.com

Zachary T. Williams

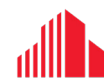
303.813.6474

zach.williams@cushwake.com

Caitlin I. Ellenson

303.312.1914

caitlin.ellenson@cushwake.com



**CUSHMAN &  
WAKEFIELD**