

375 NORTH STEPHANIE ST.

HENDERSON, NV 89014 | FOR LEASE



 **LEE &
ASSOCIATES**
COMMERCIAL REAL ESTATE SERVICES

DAVID BAUMAN, SIOR, CCIM

Principal
O (702) 490-0699
C (702) 460-7013
dbauman@lee-associates.com
License: S.0182687

NICOLE CLOVIS

Principal
O (702) 490-0699
C (702) 250-7755
nclovis@lee-associates.com
License: S.0193945

375 N STEPHANIE ST.

BUILDING 22 | HENDERSON, NV 89014



\$1.40 PSF NNN

Lease rate



±1,732 SF

Space available

PROPERTY HIGHLIGHTS

- Professional single story office building
- Prime corner location at Stephanie St. & Warm Springs Rd. within Galleria Corporate Center
- Exterior signage opportunities available
- Covered parking on-site
- Zoned for Community Commercial use
- CAM: \$0.57 PSF

DEMOGRAPHICS

	1-MILE	3-MILE	5-MILE
2024 POPULATION	18,642	145,891	323,174
2024 AVERAGE HOUSEHOLD INCOME	\$87,209	\$93,009	\$91,033
2024 TOTAL HOUSEHOLDS	7,329	58,145	126,911

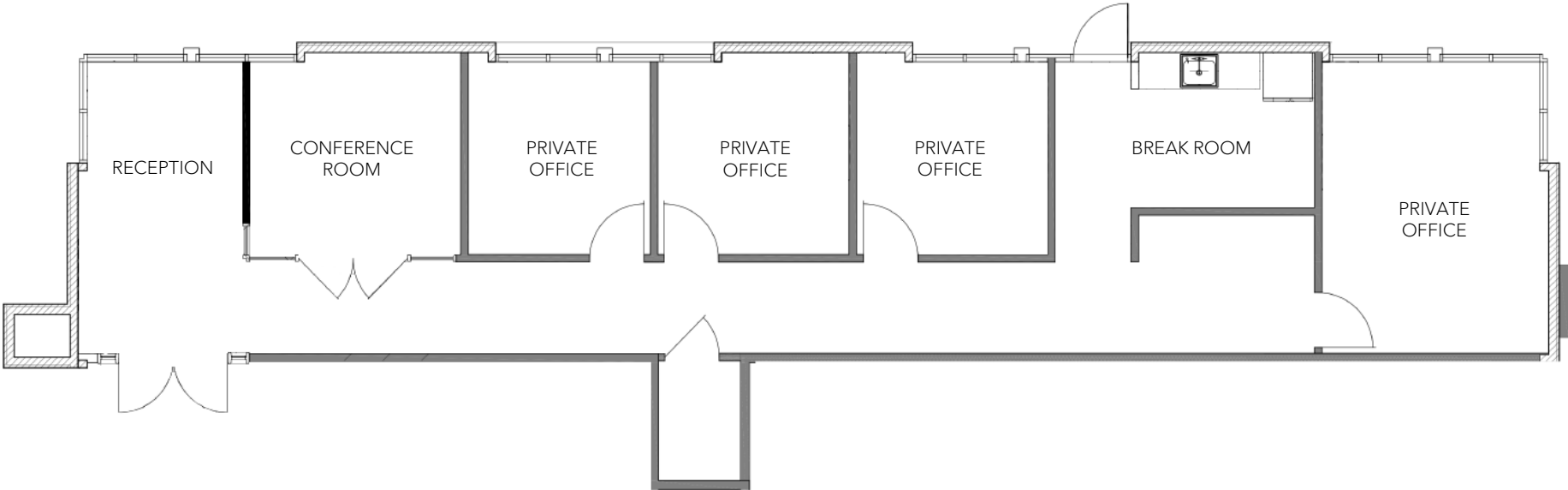


375 N STEPHANIE ST.

BUILDING 22 | HENDERSON, NV 89014

BUILDING 22 - SUITE 2211

- ±1,732 SF
- 4 private offices
- Break room
- Conference room



375 N STEPHANIE ST.

BUILDING 22 | HENDERSON, NV 89014



AVAILABLE
BUILDING 22
±1,732 SF

W WARM SPRINGS RD. / 24,000 CPD

N STEPHANIE ST.



LEE & ASSOCIATES
COMMERCIAL REAL ESTATE SERVICES

FOR MORE INFORMATION, PLEASE REACH OUT TO OUR TEAM.

DAVID BAUMAN, SIOR, CCIM

Principal
O (702) 490-0699
C (702) 460-7013
dbauman@lee-associates.com
License: S.0182687

NICOLE CLOVIS

Principal
O (702) 490-0699
C (702) 250-7755
nclovis@lee-associates.com
License: S.0193945

LEE & ASSOCIATES OF LAS VEGAS LLC | B.0146492 | 8311 W SUNSET ROAD, SUITE 120, LAS VEGAS, NV 89113

All information furnished regarding property for sale, lease or financing is from sources deemed reliable, but no warranty or representation is made to the accuracy thereof and same is submitted to errors, omissions, change of price, rental or other conditions prior to sale, lease or financing or withdrawal without notice. No liability of any kind is to be imposed on the broker herein