

4265 RICE STREET

LIHUE, HAWAII 96766



COMMERCIAL SPACE FOR LEASE



CUSHMAN &
WAKEFIELD

ChaneyBrooks





PROPERTY DETAILS

Base Rent \$2.50 SF/MO

CAM ~\$1.00/SF/Mo

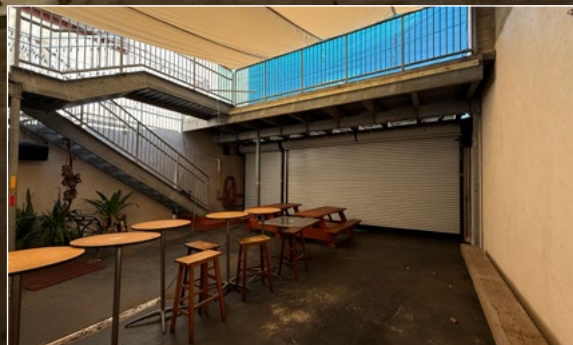
Building Size 8,603 SF

Land Size 10,000 SF

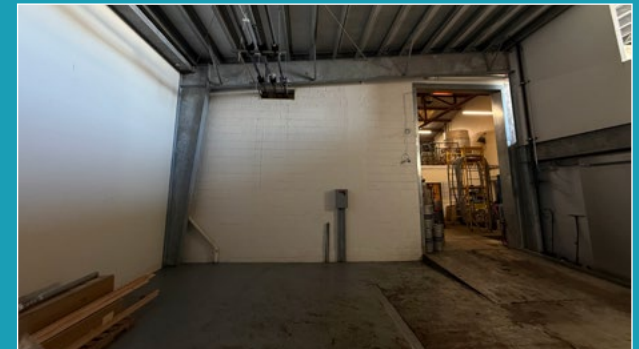
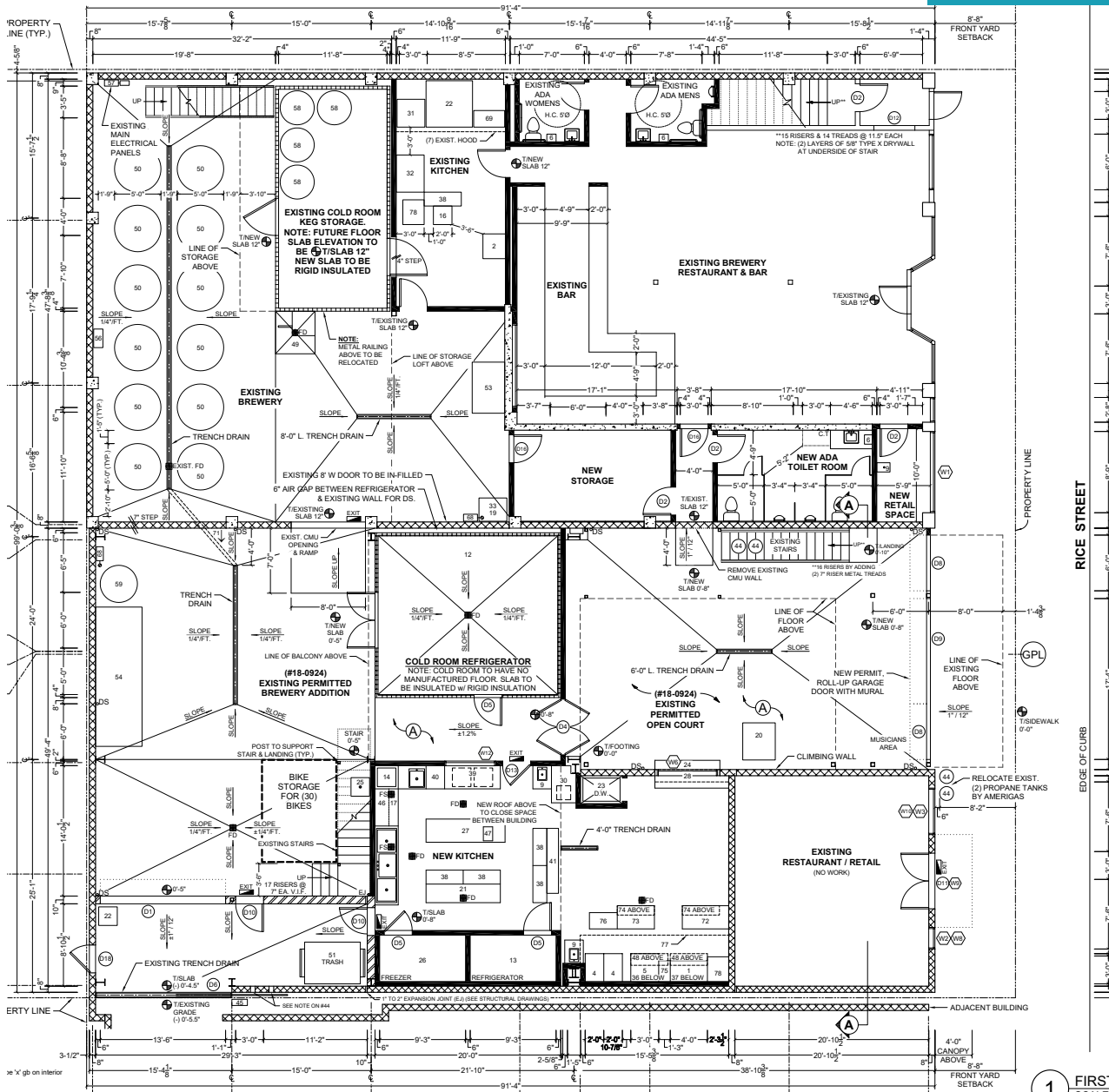
Zoning C-G

4265 Rice Street offers a unique opportunity to lease commercial space in the heart of Lihue, ideally positioned along Rice Street, one of the areas most well-traveled corridors. The property benefits from steady foot traffic throughout the day from both local residents and visitors, with street parking fronting the space. Surrounded by a mix of retail and office users, the location offers an established customer base and strong opportunity to serve the immediate community.

The space is ideally suited for a restaurant or craft beer concept looking to establish their presence in a well-known location. Conveniently located for both pedestrians and vehicles, this property is the ideal location for vibrant dining and a social atmosphere. Availabilities nearby are limited, making this a rare opportunity for operators seeking to expand in the Lihue market. New Tenants may benefit from the soon to be completed 66 unit apartment complex close by and Kauai County's continued emphasis to enhance Rice Street as it's pedestrian friendly Town Core.



FIRST FLOOR SITE PLAN





4265 RICE ST
LIHUE, HI 96766

KUKUI GROVE CENTER
ROSS DRESS FOR LESS
THE TIMES SUPERMARKETS
FAMOUS footwear
Longs Drugs
Spectrum

SAFeway

THE HOME DEPOT

COSTCO WHOLESALE

TARGET

CONTACT US FOR MORE INFORMATION

ANTHONY PROVENZANO (B) SIOR, CCIM
Senior Vice President
+1 808 544 1780
aprovenzano@chaneybrooks.com
Lic #RB-22101

KELLY A. VEA (S) CCIM
Vice President
+1 808 544 1781
kvea@chaneybrooks.com
Lic #RS-79079

PATRICK MCLEAN (B)
Vice President
+1 808 346 3211
pmclean@chaneybrooks.com
Lic #RB-23960



ChaneyBrooks

