

Office/Warehouse Available for Lease | 4955 Newport Street

Commerce City, Colorado 80022



photography | Copyright © 2024 by J. Barry Winter | All Rights Reserved

Office/Warehouse For Lease

PROPERTY SUMMARY

Asking Rate	\$10.50 psf + NNN
Building Size	10,228 sf
Office Space	1,110 sf - Updated
Yard	Approx. 5,000 sf fenced
Bathrooms	Three
Loading	1 drive in door - 12 ft
Loading	1 drive in door - 10 ft
Loading	1 drive in door - 10 ft and oversized
Power	heavily powered, call for information
Sprinkled	Yes - warehouse
Parking	6 on-property spaces
Zoning	I-2S

4955 Newport Street is now available for lease. Its building size of over 10,000 sf houses both office and warehouse space and is located in the Commerce City industrial area with nearby access to Interstate-70. It's three drive-in doors of varying sizes makes the loading area sufficient to handle swift warehousing needs. Having six on-site parking spaces and an ample supply of on-street parking as well as a large 5,000 square foot barbed-wire fenced-in yard serves as an opportunity worth looking into. Please call for more detailed information.



6795 E TENNESSEE AVE, STE 601, DENVER, CO 80224
720-941-9200 Main | 720-941-9202 Fax

Lev Cohen
720-880-2925 direct | 720-232-4118 cell
lev@weststarcommercial.com

www.weststarcommercial.com

Information contained herein, while not guaranteed, is from sources believed reliable. Price, terms, and information subject to change

Copyright © 2026 Weststar Commercial. All Rights Reserved

4955NW - 051526

4955 Newport Street | Great Opportunity
Commerce City, Colorado 80022



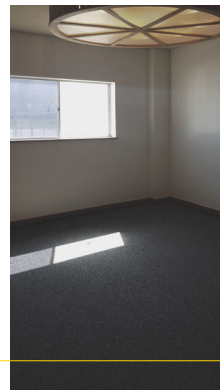
Office/Warehouse For Lease



all interior photographic-imaging | Copyright © 2018 LevCohen / J. Barry Winter | All Rights Reserved



Copyright © 2018 by J. Barry Winter | All Rights Reserved



weststar

Lev Cohen

720-880-2925 direct | 720-232-4118 cell

lev@weststarcommercial.com

www.weststarcommercial.com

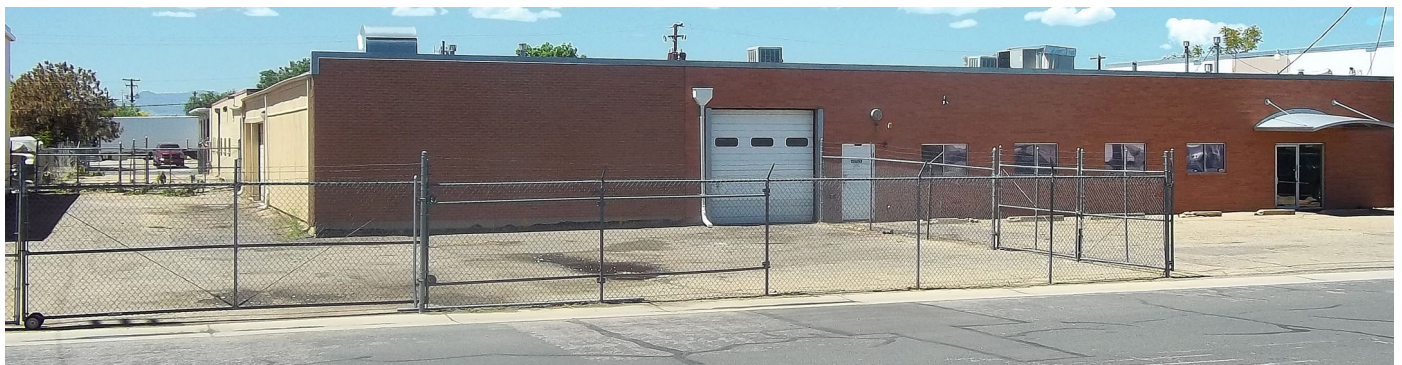
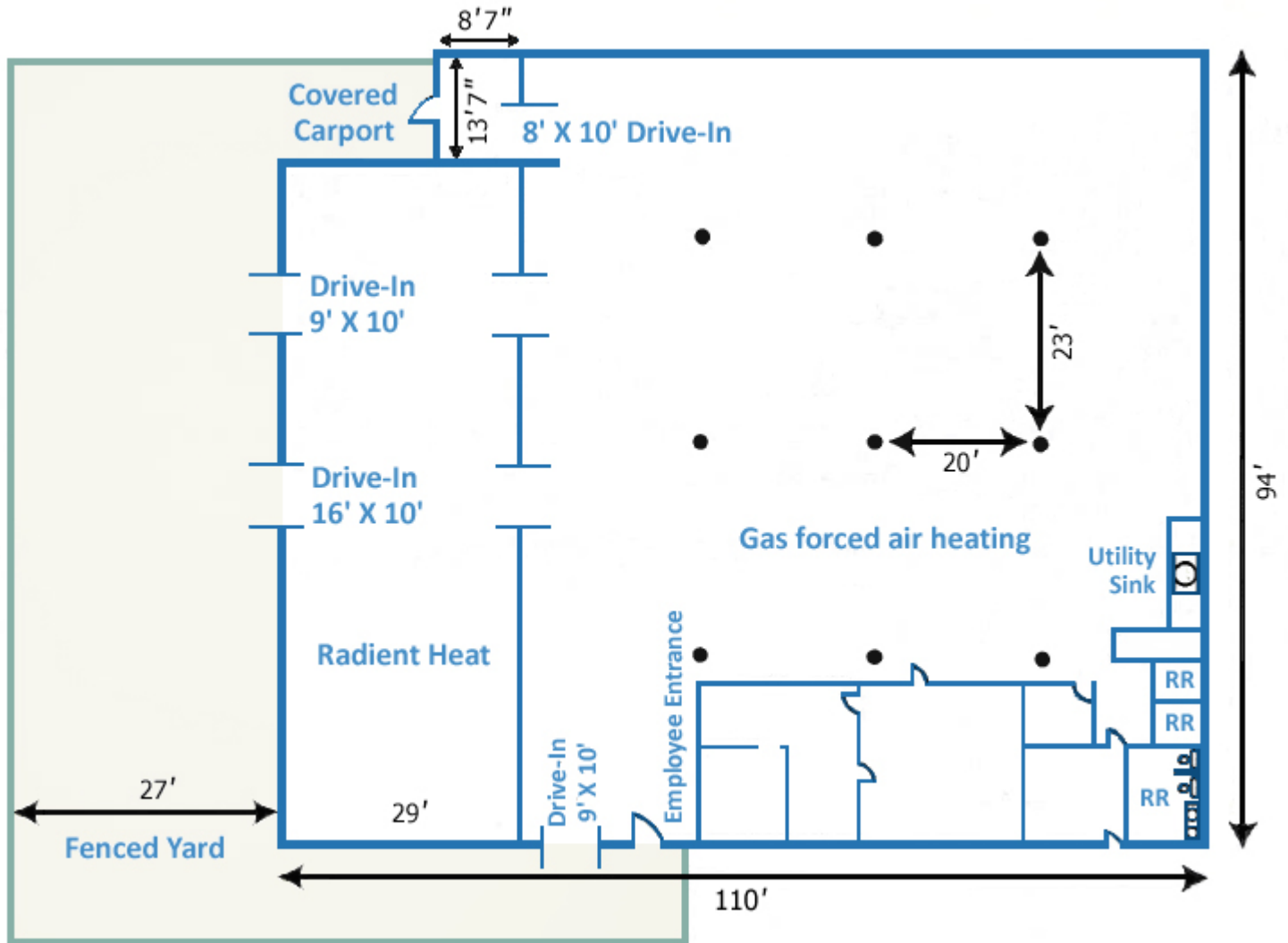
INDUSTRIAL HIGHLIGHTS

- Access to nearby I-70 ◀
- Large warehouse/office mix ◀
- Three drive in doors various sizes ◀
- Three restroom facilities ◀
- 5,000 sf fenced front/side yard area ◀
- Huge office and storage space ◀
- Warehouse sprinkled ◀

4955NW - 051526

Office/Warehouse Available for Lease | 4955 Newport Street

Commerce City, Colorado 80022



photography | Copyright © 2024 by J. Barry Winter | All Rights Reserved

Lev Cohen

720-880-2925 direct | 720-232-4118 cell
lev@weststarcommercial.com



weststar

Copyright © 2026 Weststar Commercial

4955NW - 051526