



Lease Rate: Negotiable

## 335 Village Center Dr.

Logan Township, NJ 08085

### Property Features

- Former Rite Aid
- Drive-thru in place
- 2.32 acres
- +/- 13,824 SF building
- Parking for 68, including 3 handicapped
- Trash enclosure
- One minute to Interstate 295

For more information:

**Joe Fonash**  
+1 302 221 7230  
joefonash@emoryhill.com

10 Corporate Circle  
New Castle, DE 19720  
+1 302 322 9500  
[naiemoryhill.com](http://naiemoryhill.com)

# NAI Emory Hill

For Lease

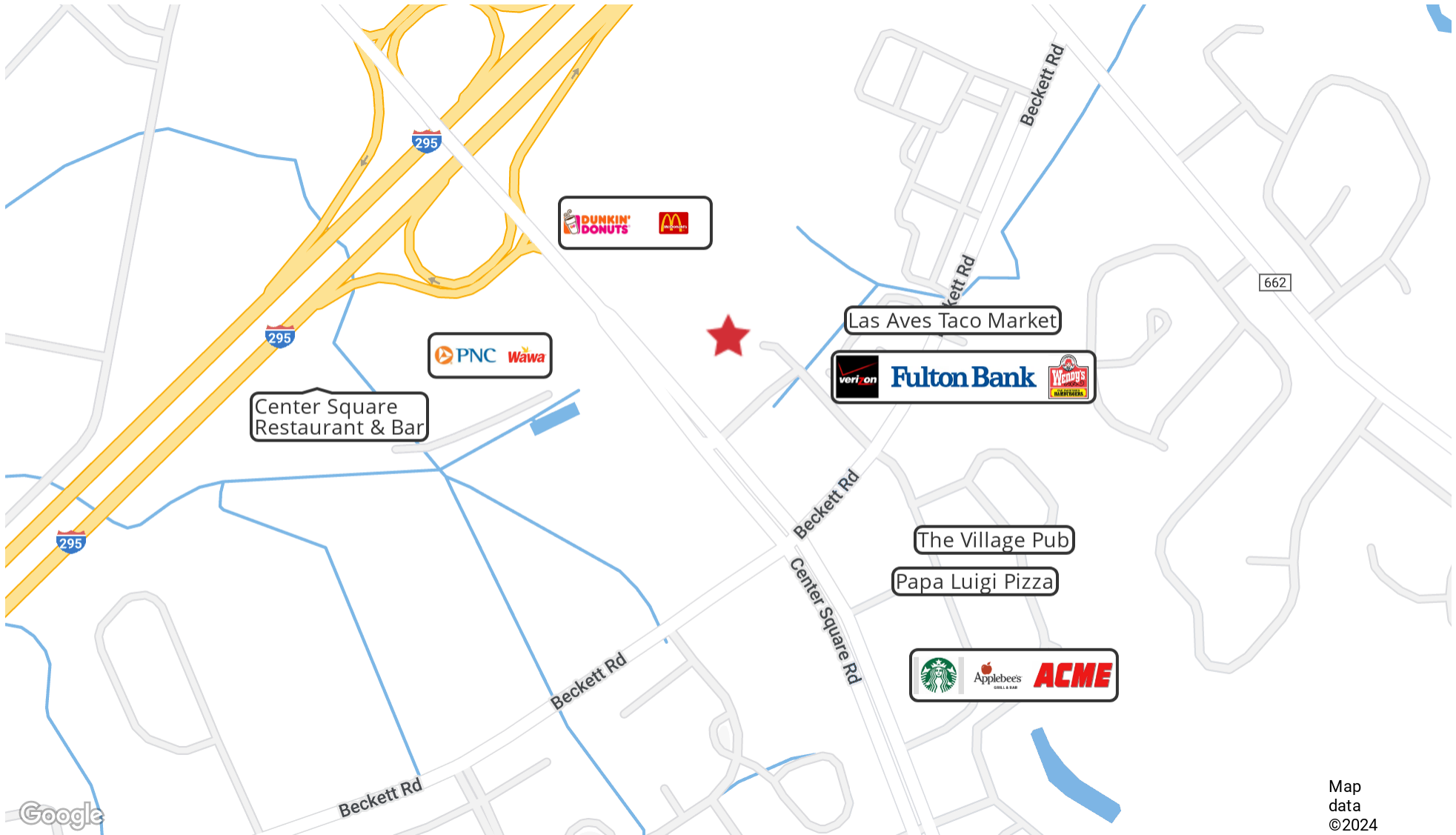
Retail Space  
+/- 13,824 SF



# NAI Emory Hill

For Lease

Retail Space  
+/- 13,824 SF



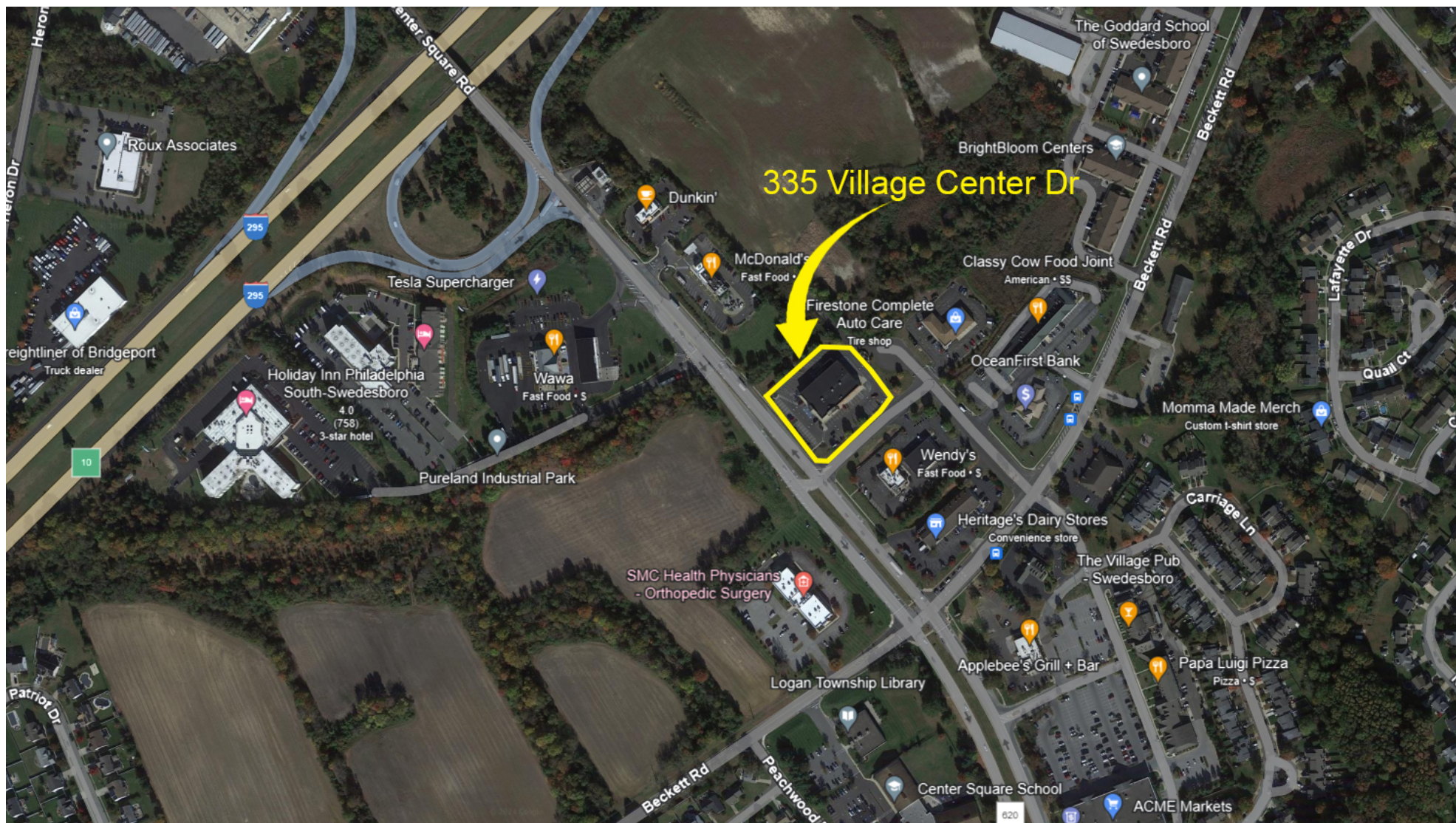
Map data ©2024

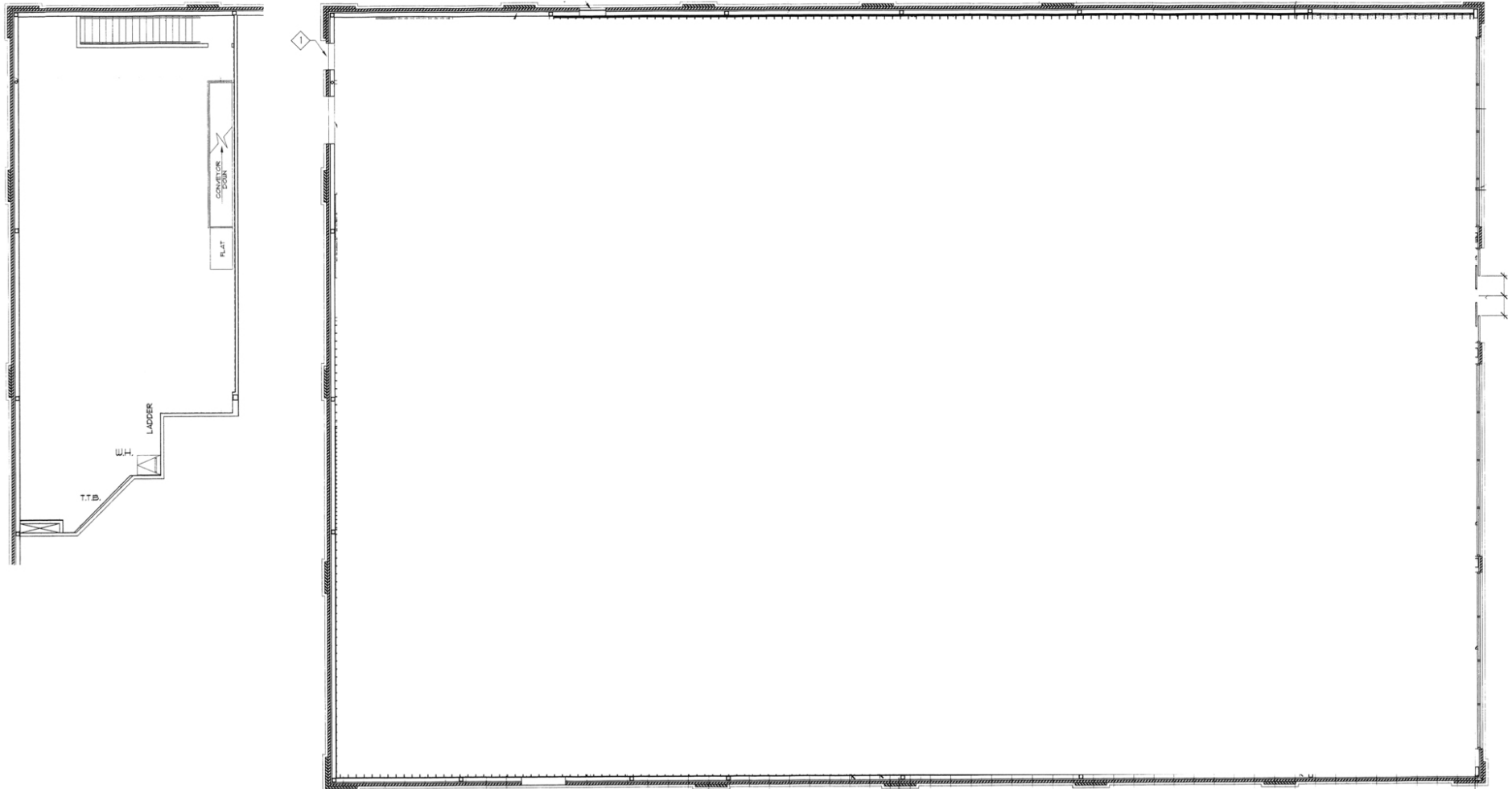
# NAI Emory Hill

For Lease

Retail Space

+/- 13,824 SF





## Demographics Map

Population	1 Mile	3 Miles	5 Miles
TOTAL POPULATION	4,871	16,174	25,433
MEDIAN AGE	41.4	39.2	38.8
MEDIAN AGE (MALE)	45.0	39.1	38.0
MEDIAN AGE (FEMALE)	38.5	39.0	39.7

Housholds & Income	1 Mile	3 Miles	5 Miles
TOTAL HOUSEHOLDS	1,680	5,712	8,843
# OF PERSONS PER HH	2.9	2.8	2.9
AVERAGE HH INCOME	\$135,008	\$124,801	\$126,976
AVERAGE HOUSE VALUE	\$267,490	\$282,000	\$290,147

