

Industrial | For Lease

CBRE

3160 E Transcon Way & 3293 E Hemisphere Loop

Tucson, AZ 85706

±11,200 SF Available | Industrial/Flex Space



3160 E Transcon Way & 3293 E Hemisphere Loop

Tucson, AZ 85706

For Lease

Property Description

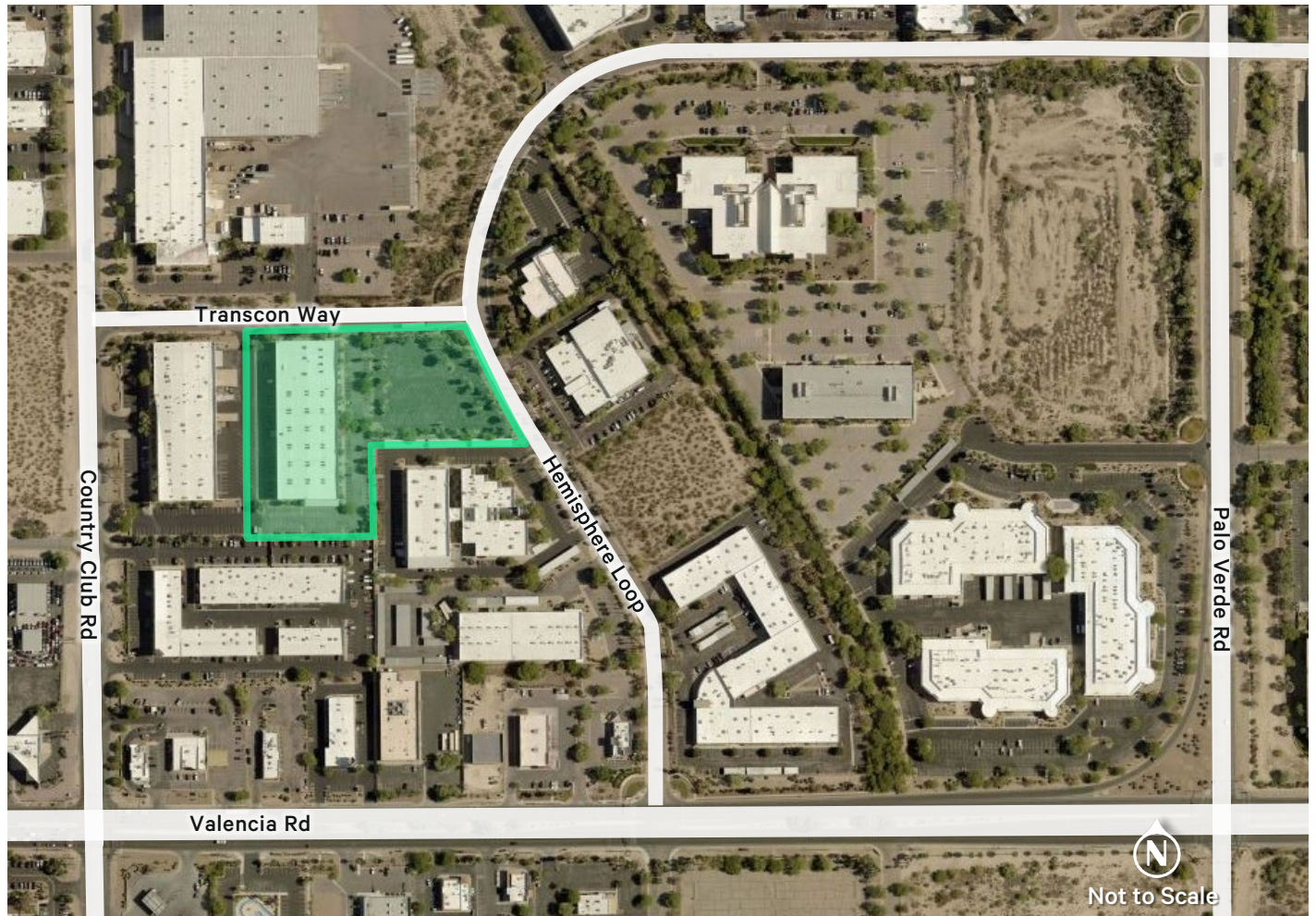
This building is near the Country Club and Valencia intersection. Located in the Tucson International Business Center. About one mile from the Tucson International Airport and near several Interstate 10 on ramps.

This is a Flex Industrial building, prior uses include light manufacturing, R & D, back office, and warehouse distribution.

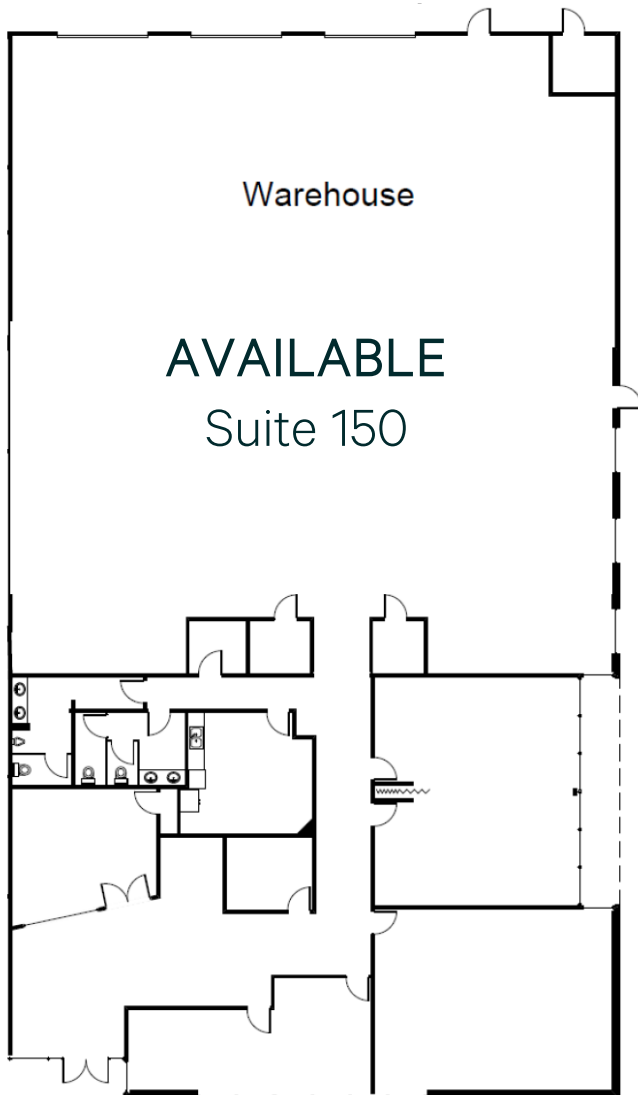
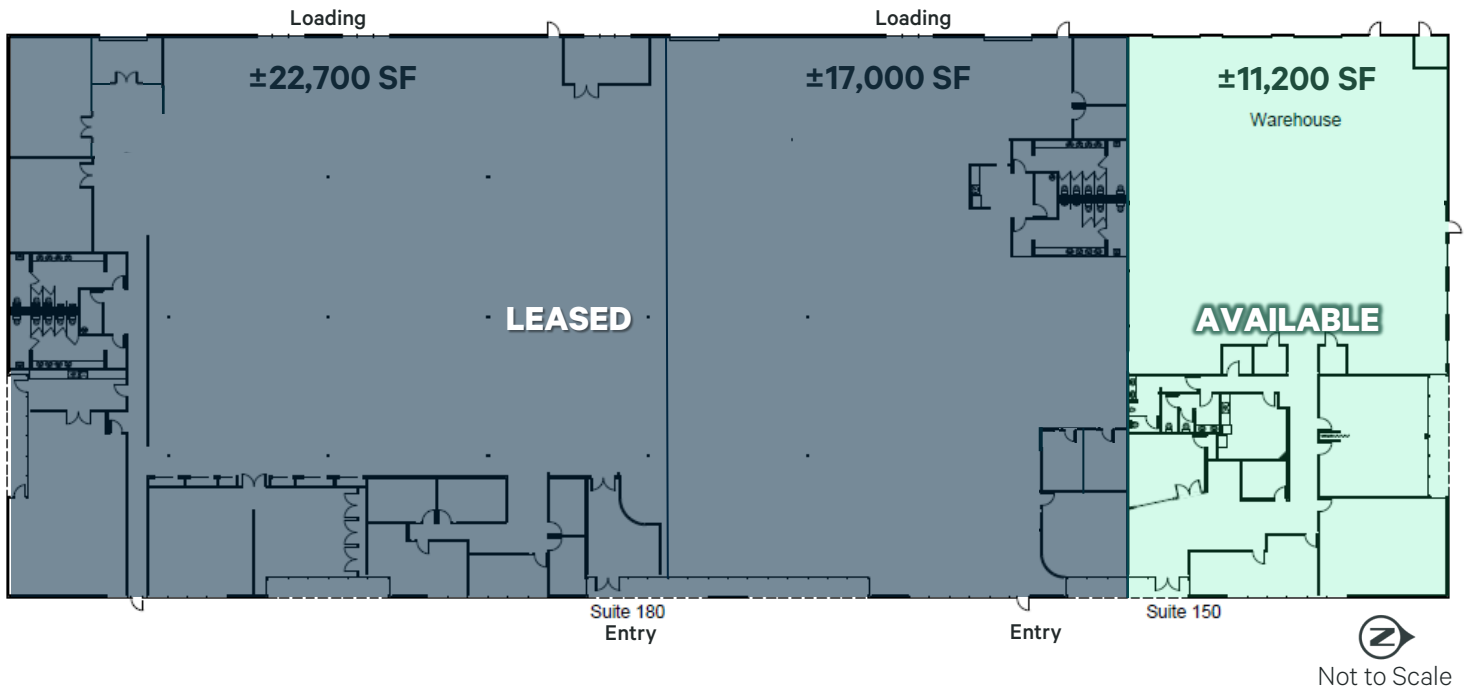


Property Details

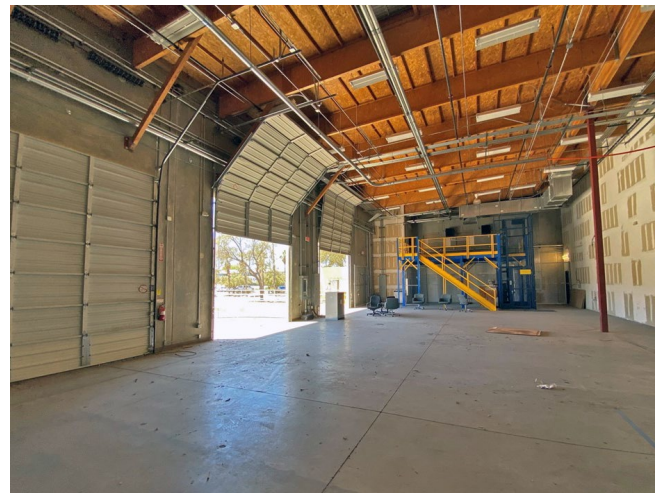
Lease Rate	\$0.85/SF, NNN
Building Size	±50,900 SF (Can be demised)
Lease Rate	\$0.80/SF- ±11,200 SF
Land Size	±4.63 AC
Parking	5.7 per 1,000 SF
Power	3,200 Amps 480/600V 3-Phase
HVAC	90% AC
Loading	±11,200 SF – 1 dock, 3 grade
Clear Height	24'
Zoning	I-1, industrial (City of Tucson)
Year Built	1995



Floor Plan- Total Available $\pm 11,200$ SF



Property Photos





Contact Us

Tim Healy

Senior Vice President
+1 520 247 9194
tim.healy@cbre.com

© 2025 CBRE, Inc. All rights reserved. This information has been obtained from reliable sources but has not been verified for accuracy or completeness. CBRE, Inc. makes no guarantee, representation, or warranty and accepts no responsibility or liability for the accuracy, completeness, or reliability of the information contained herein. You should conduct a careful, independent investigation of the property and verify all information. Any reliance on this information is solely at your own risk. CBRE and the CBRE logo are service marks of CBRE, Inc. All other marks displayed on this document are the property of their respective owners, and the use of such marks does not imply any affiliation with or endorsement of CBRE. Photos herein are the property of their respective owners. Use of these images without the express written consent of the owner is prohibited.