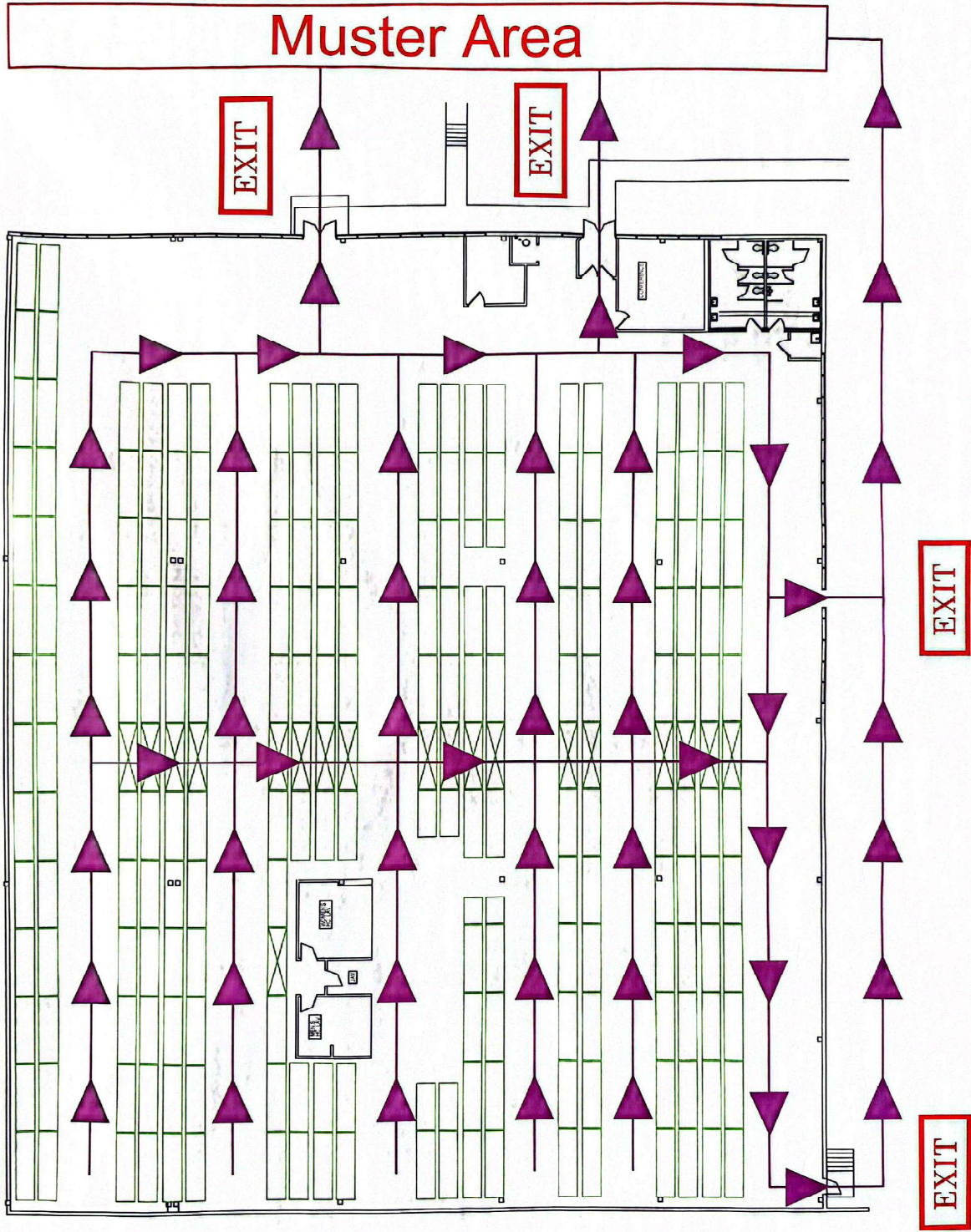


# Ashton Warehouse Emergency Evacuation Plan



- YOUR ROLE**
- FAMILIAR WITH EXIT ROUTES, FIRE ALARMS AND EMERGENCY EQUIPMENT IN YOUR WORK AREA.
- EVACUATION PROCEDURE**
- ON RECEIVING AN EVACUATION SIGNAL (CONTINUOUS BELL AND STROBE LIGHTS) LEAVE YOUR AREA VIA THE DESIGNATED EVACUATION ROUTE.
  - WHEN LEAVING THE BUILDING, ASSEMBLE AT YOUR DESIGNATED MUSTER AREA, AND REPORT TO SUPERVISOR.
  - KEEP A SAFE DISTANCE FROM BUILDING AND EMERGENCY EVACUATION. DO NOT BLOCK FIRE LANES.
  - RETURN TO YOUR WORK AREA ONLY AFTER ADVISED BY SUPERVISOR.
- LEGEND**
- = EVACUATION ROUTE
  - ▲ = YOU ARE HERE