

900 E. WHITCOMB AVENUE  
MADISON HEIGHTS, MICHIGAN



**SIGNATURE  
ASSOCIATES**  
KNOW SIGNATURE | KNOW RESULTS

INDUSTRIAL FOR LEASE  
38,776 Square Feet Available



## PROPERTY FEATURES

- 38,776 square feet available
- 6,436 square feet office
- 18' clear height
- (2) 10' x 12' grade level doors, (1) truckwell
- 1000 amps, 277/480 volts, 3-phase power
- Nicely appointed offices
- Expandable to 50,000 square feet
- Air lines and skylights
- Lease Rate: \$9.95/sq. ft. NNN



For more information, please contact:

**PAUL HOGE**  
(248) 948 0103  
paulhoge@signatureassociates.com

**SIGNATURE ASSOCIATES**  
One Towne Square, Suite 1200  
Southfield, MI 48076  
www.signatureassociates.com

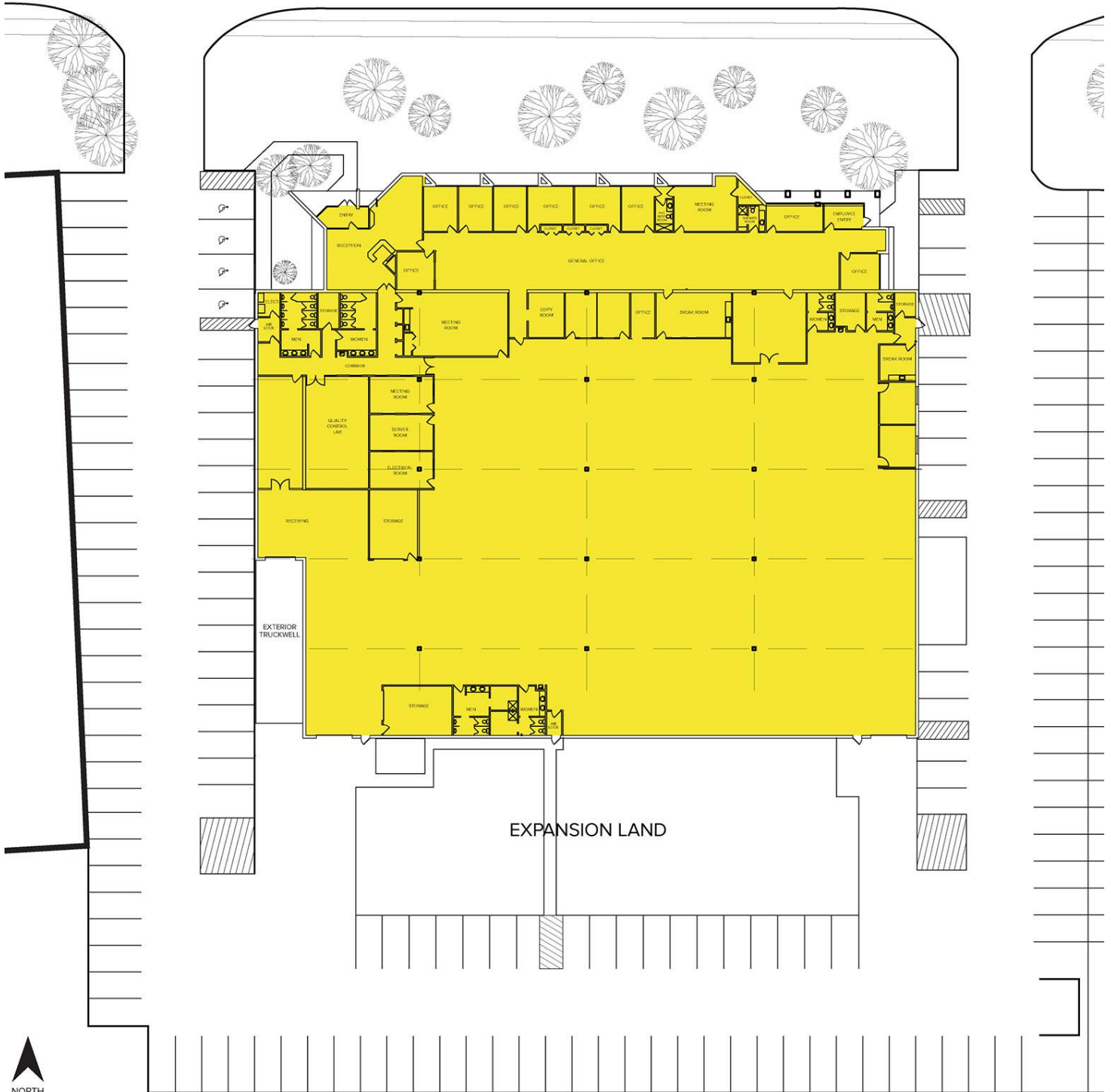
# 900 E. Whitcomb Avenue – Madison Heights, Michigan

## Industrial For Lease

38,776  
Square Feet  
AVAILABLE

### Site Plan

E. WHITCOMB AVENUE



For more information, please contact:

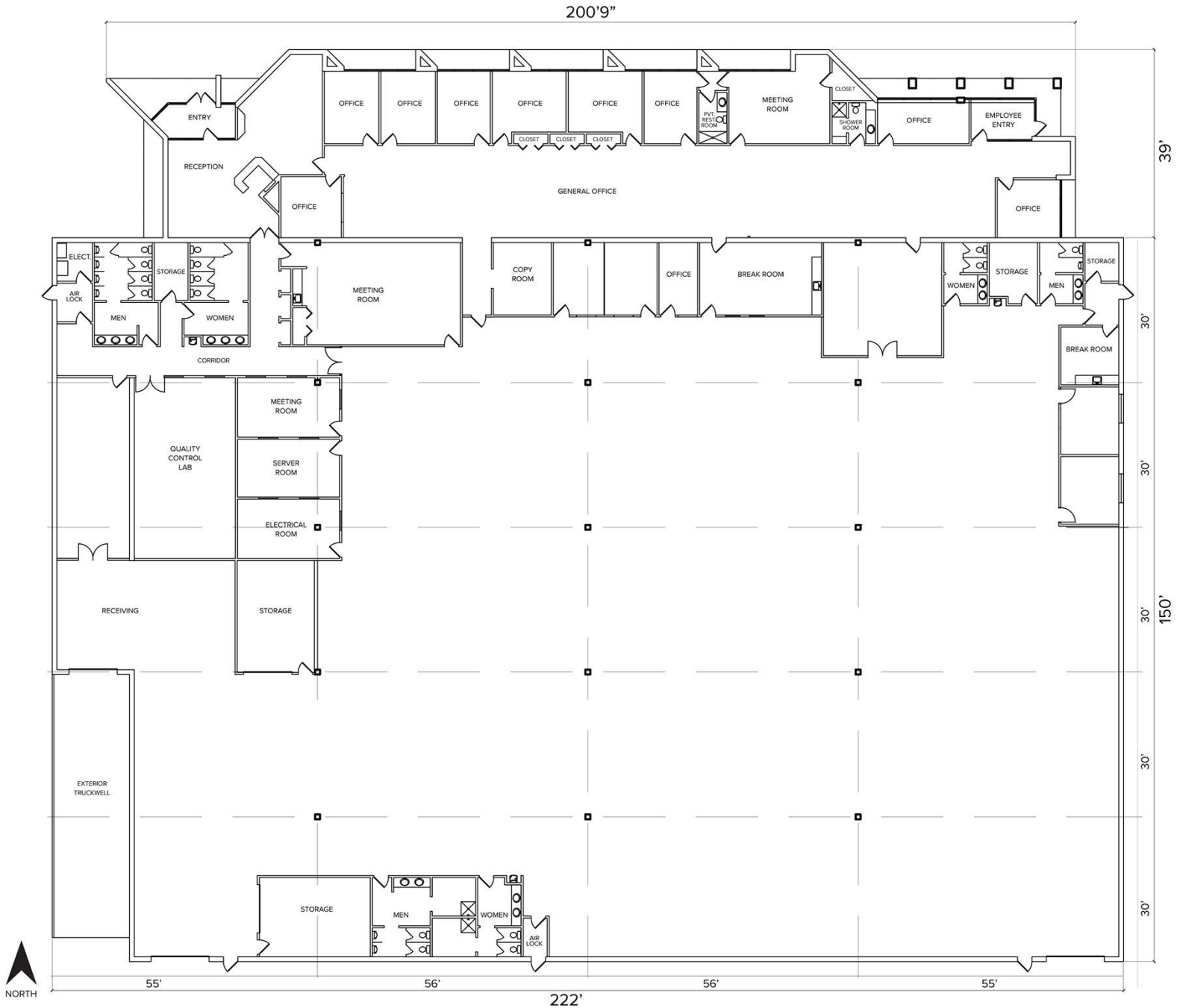
**PAUL HOGE**  
(248) 948 0103  
paulhoge@signatureassociates.com

**SIGNATURE ASSOCIATES**  
One Towne Square, Suite 1200  
Southfield, MI 48076  
www.signatureassociates.com

# 900 E. Whitcomb Avenue – Madison Heights, Michigan Industrial For Lease

38,776  
Square Feet  
AVAILABLE

## Floor Plan



For more information, please contact:

**PAUL HOGGE**  
(248) 948 0103  
paulhoge@signatureassociates.com

**SIGNATURE ASSOCIATES**  
One Towne Square, Suite 1200  
Southfield, MI 48076  
www.signatureassociates.com

# 900 E. Whitcomb Avenue – Madison Heights, Michigan

Industrial For Lease

38,776  
Square Feet  
AVAILABLE

Aerial



For more information, please contact:

**PAUL HOGE**  
(248) 948 0103  
paulhoge@signatureassociates.com

**SIGNATURE ASSOCIATES**  
One Towne Square, Suite 1200  
Southfield, MI 48076  
www.signatureassociates.com

Information is subject to verification and no liability for errors or omissions is assumed. Price is subject to change and listing withdrawal.