

# Desert Medical Campus

1432, 1450, 1500, & 1520 S DOBSON RD | MESA, AZ



## Multi-Million Dollar Modernization Project Complete

For Lease on Campus at Banner Desert Medical Center

PERRY GABUZZI, CCIM  
602.513.5116  
perry.gabuzzi@kidder.com

RACHAEL THOMPSON  
602.513.5122  
rachael.thompson@kidder.com





# Desert Medical Campus

Four-building, 313,671 SF medical office park on campus at Banner Desert Medical Center

Multi-million dollar modernization project recently completed

Walkway connecting 1432 building to Banner Desert Medical Center

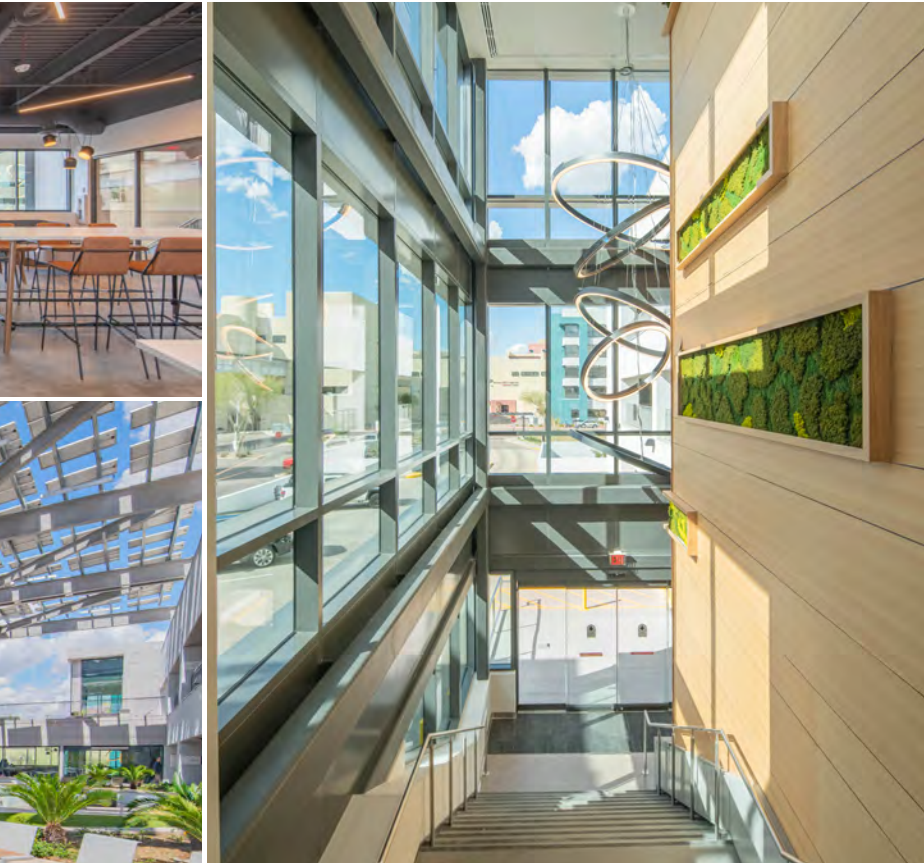
Medical office suites ranging from ±1,075 SF - ±14,196 SF



# Banner Desert Medical Center

As one of the largest and most comprehensive facilities in Arizona, Banner Desert serves as a tertiary referral center for the East Valley of metropolitan Phoenix and treats the highest levels of acuity in the East Valley.

The campus has 669-bed private rooms, with 248 beds dedicated to children (Cardon Children's Medical Center). There are currently 1,200 physicians representing 65 specialties.



## Property Highlights



**Complete interior and exterior renovations recently finished**



**Move-in ready spec suites available for immediate occupancy**



**On site cafe with food services in Building 1520**



**On campus at Banner Desert Medical Center**



**Building and monument signage opportunities available**



**Ample surface level parking plus two covered parking garages**



0.1 miles

From Banner Desert  
Medical Center

0.2 miles

From US-60 Access

1.0 miles

From Loop 101 Access

1.5 miles

From Retail and  
Dining Amenities

## Leasing inquiries:

**PERRY GABUZZI, CCIM**  
602.513.5116  
perry.gabuzzi@kidder.com

**RACHAEL THOMPSON**  
602.513.5122  
rachael.thompson@kidder.com



This information supplied herein is from sources we deem reliable. It is provided without any representation, warranty, or guarantee, expressed or implied as to its accuracy. Prospective Buyer or Tenant should conduct an independent investigation and verification of all matters deemed to be material, including, but not limited to, statements of income and expenses. Consult your attorney, accountant, or other professional advisor.