

1422 Wix Road

Dillon, SC | 29536

FOR LEASE

Industrial Manufacturing



67,700 SF AVAILABLE

- ±67,700 SF Industrial Manufacturing Facility with expansion land
- ±92 Acre Site
- \$4.00/sf NNN
- Potential CSX Rail Service
- Within 1 Mile of I-95
- Within 5 Miles from Inland Port Dillon

Don Moss, SIOR | CCIM

Executive Vice President
704 409 2372
don.moss@colliers.com

Chuck Salley, SIOR

Managing Director
1+ 803 463 4843
chuck.salley@colliers.com

Thomas Beard, SIOR

Vice President
+1 803 401 4247
thomas.beard@colliers.com

John Peebles, SIOR

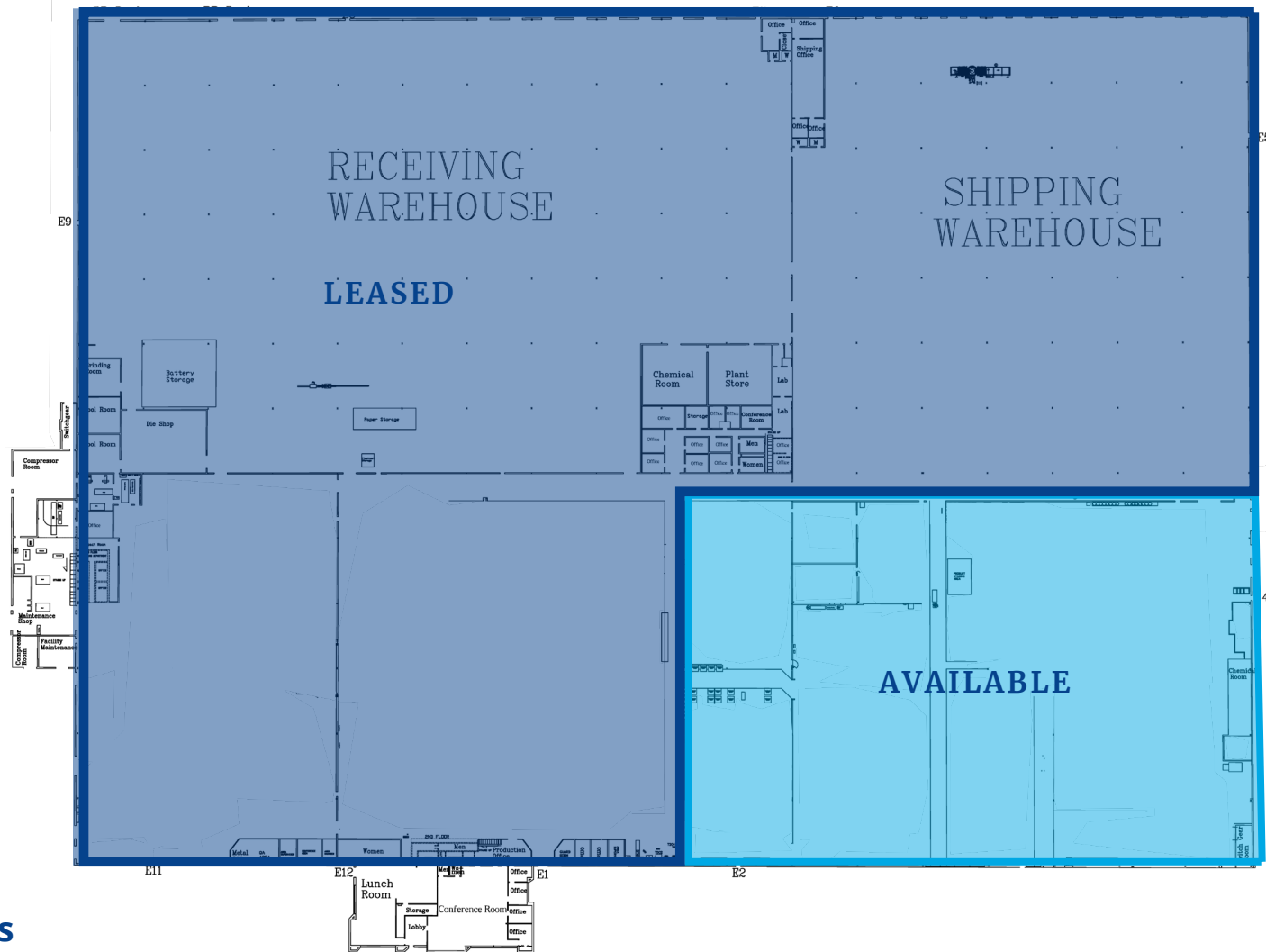
Senior Associate
+1 803 414 6790
john.peebles@colliers.com

JD Allen

Senior Associate
+1 704 409 2368
jd.allen@colliers.com



Property Overview

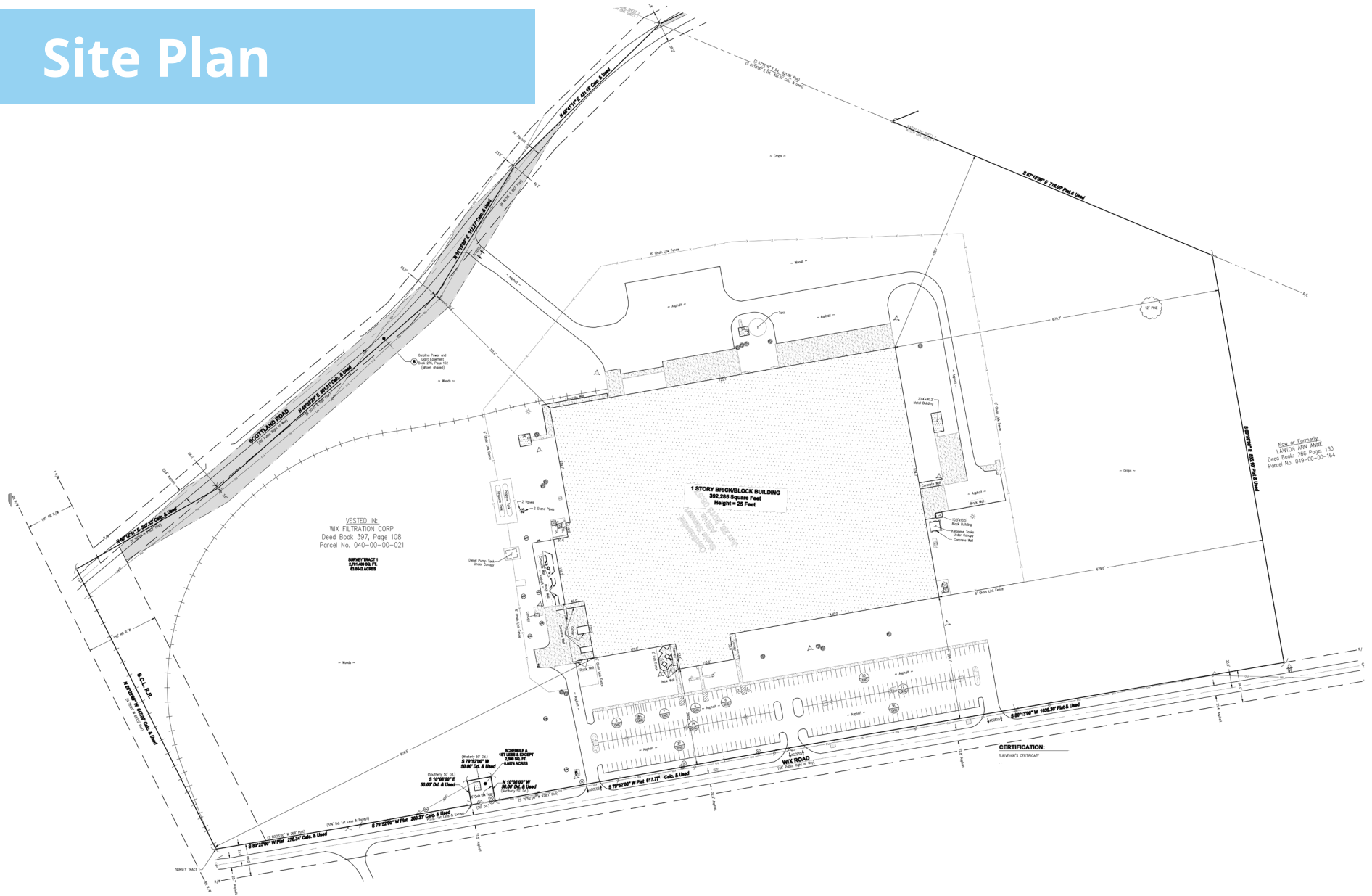


Building Specs

Available SF	67,700 SF
Building Size	±404,787 SF
Office SF	±5,000 SF
Lot Size	92.66 Acres
Building Depth	525'
Ceiling Height	19' - 21'
Column Spacing	40' x 40'

Dock doors	3
Rail Doors	2
Drive-In Doors	1
Auto Parking Spaces	302
Trailer Parking Spaces	18
Security	Fully Fenced
Cranes	2 Bridge Cranes

Site Plan

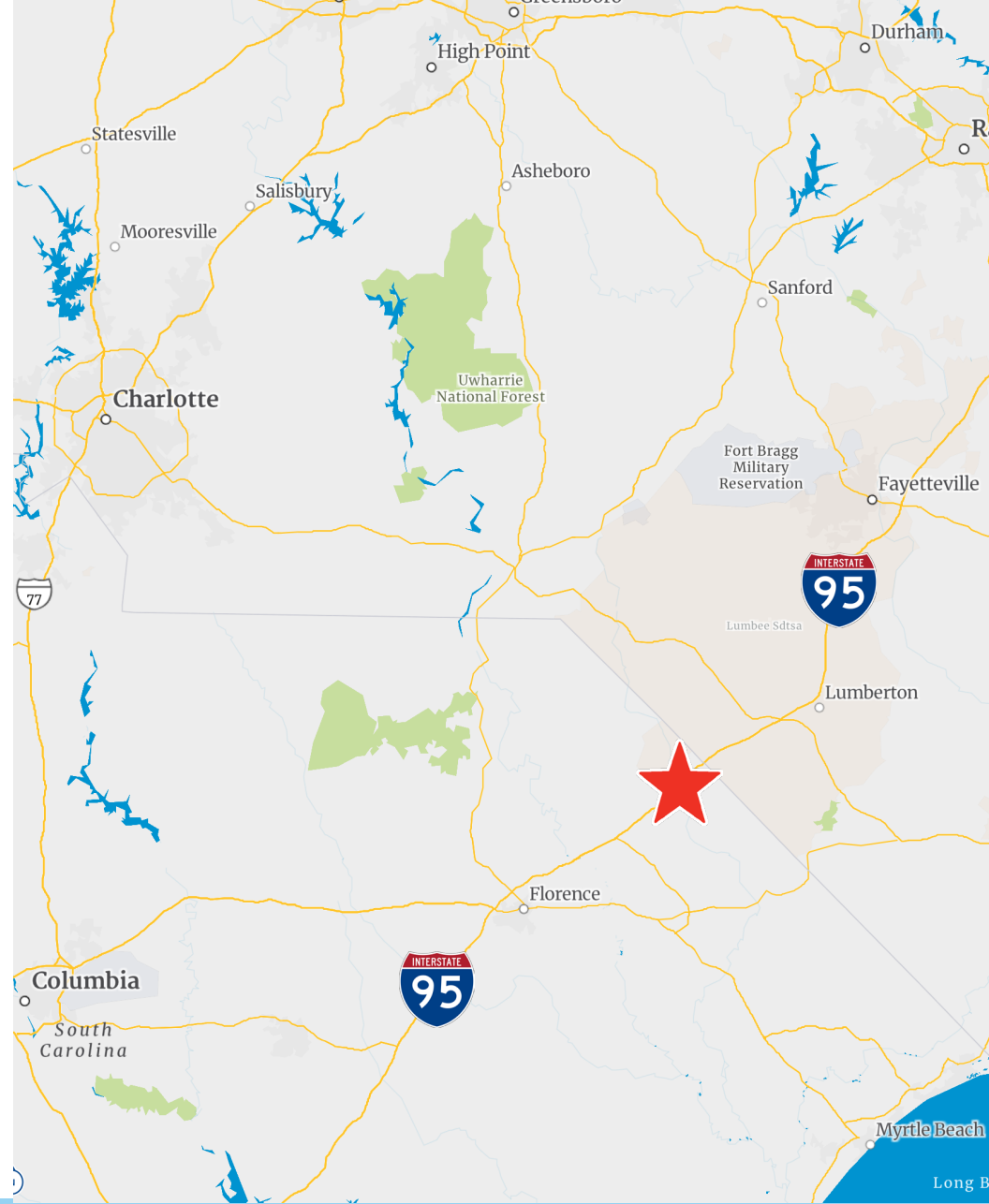


**67,700 SF
AVAILABLE**

Location Overview



**67,700 SF
AVAILABLE**



Contact Us:

Don Moss, SIOR | CCIM
Executive Vice President
704 409 2372
don.moss@colliers.com

Chuck Salley, SIOR
Managing Director
1+ 803 463 4843
chuck.salley@colliers.com

Thomas Beard, SIOR
Vice President
+1 803 401 4247
thomas.beard@colliers.com

John Peebles, SIOR
Senior Associate
+1 803 414 6790
john.peebles@colliers.com

JD Allen
Senior Associate
+1 704 409 2368
jd.allen@colliers.com

