



# FOR SUBLEASE

Santa Fe Medical Plaza

9755 N 90th St, Scottsdale, AZ 85258



Jones Lang LaSalle Americas, Inc. | AZ License #CO508577000

# The Property

## Overview

### AVAILABILITIES

- Suite A100/A105\*
- \*Built out medical with high-end finishes in 2019

### BUILDING SF

25,241 SF

### RENTABLE SF

- Suite A100/A105 4,250 SF

### RENT RATE

*please call*

### PARKING

7 Reserved Covered

### TERM EXPIRATION

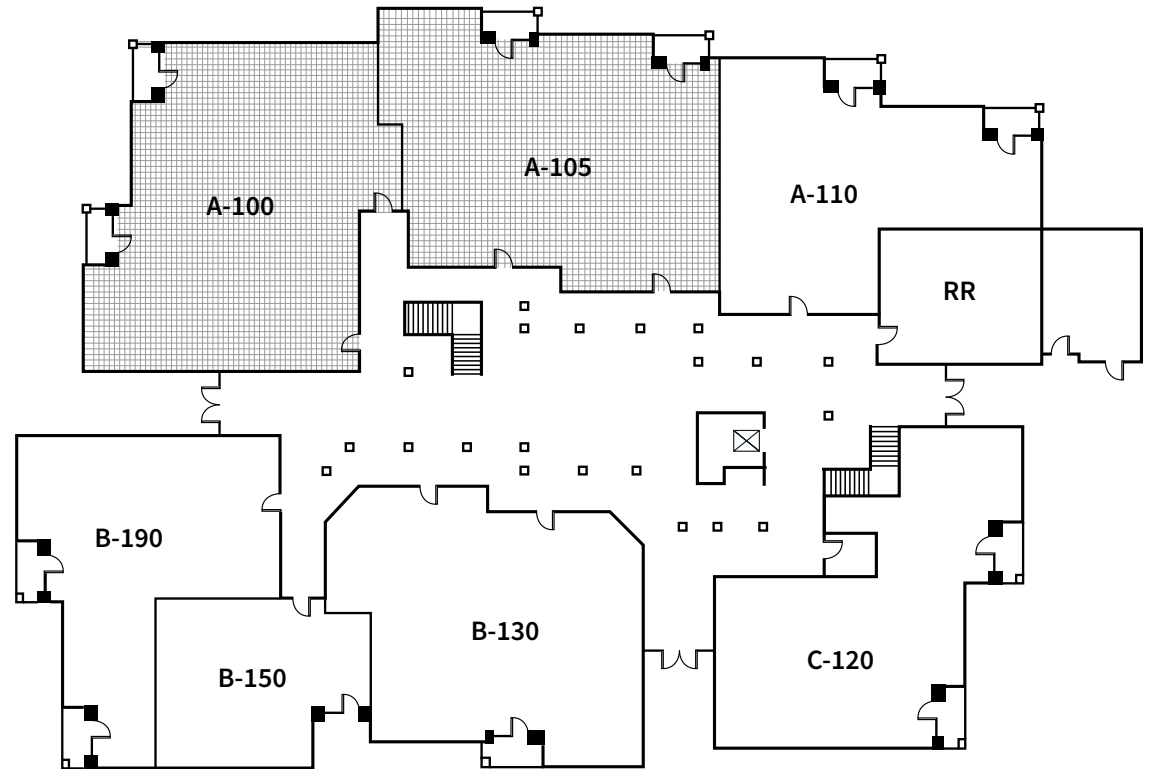
February 29, 2028

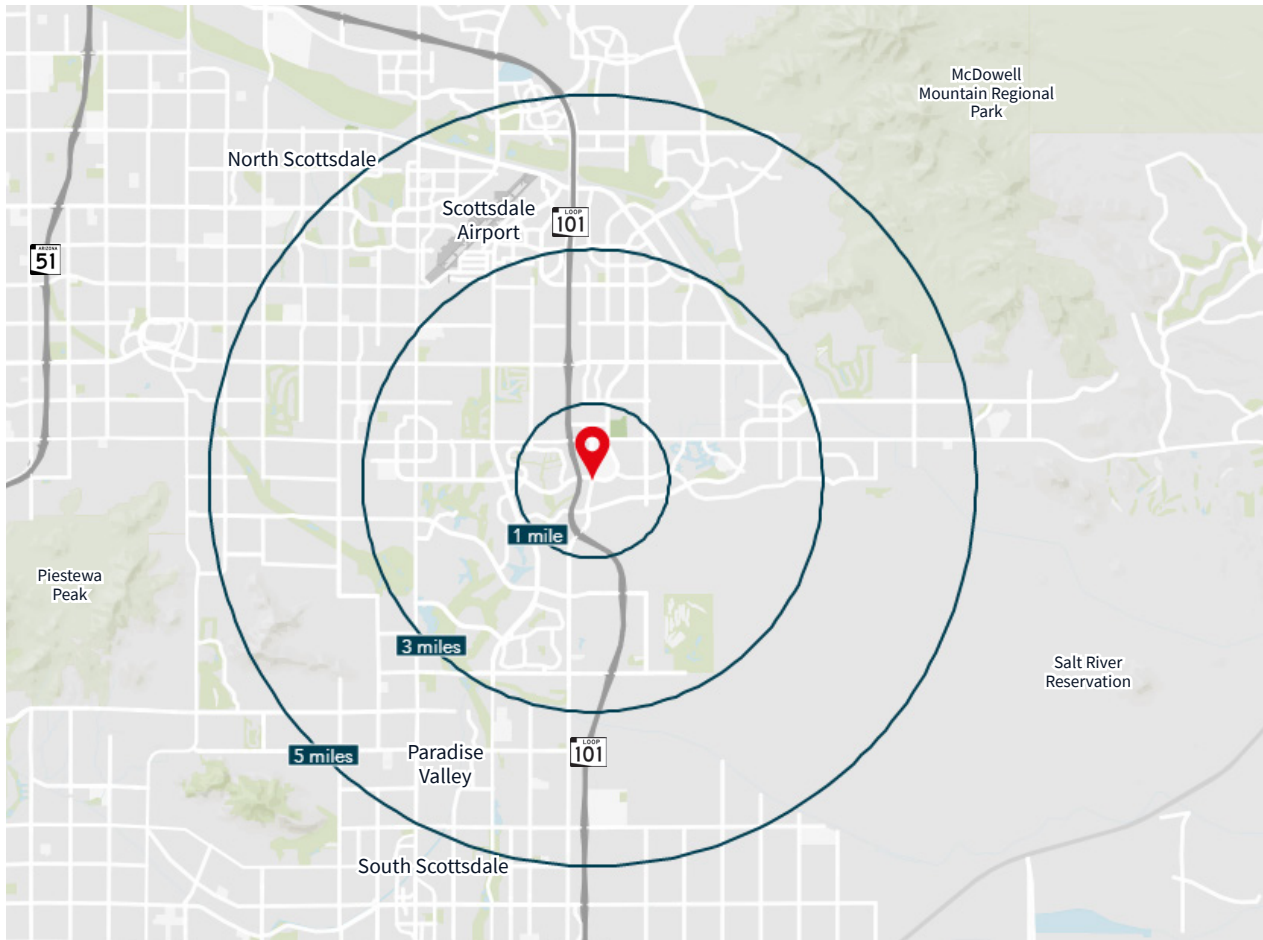
### RENEWAL TERM

One (1) additional five (5) year term

### ADDITIONAL INFO

- Excellent Medical and/or General Office Space
- Primary Care anchored
- 0.5 mile from HonorHealth Scottsdale Shea Medical Center





## KEY DISTANCES

HonorHealth Shea Medical Center	0.5 miles
HonorHealth Scottsdale Thompson Peak	8.5 miles
Banner Health Scottsdale	11.8 miles
Abrazo Scottsdale Campus	14 miles
Loop 101 Freeway	0.5 mile
State Route 51 Freeway	8.2 miles
Loop 202 Freeway	10.3 miles
I-10 Freeway	20 miles
I-17 Freeway	25 miles



# THANK YOU

## FOR MORE INFORMATION:



**Katie McIntyre**

Executive Vice President, Healthcare  
T +1 602 282 6357  
M +1 602 538 3855  
katie.mcintyre@jll.com



**Mari Lederman**

Executive Vice President, Healthcare  
T +1 602 282 6325  
M +1 602 705 8870  
mari.lederman@jll.com

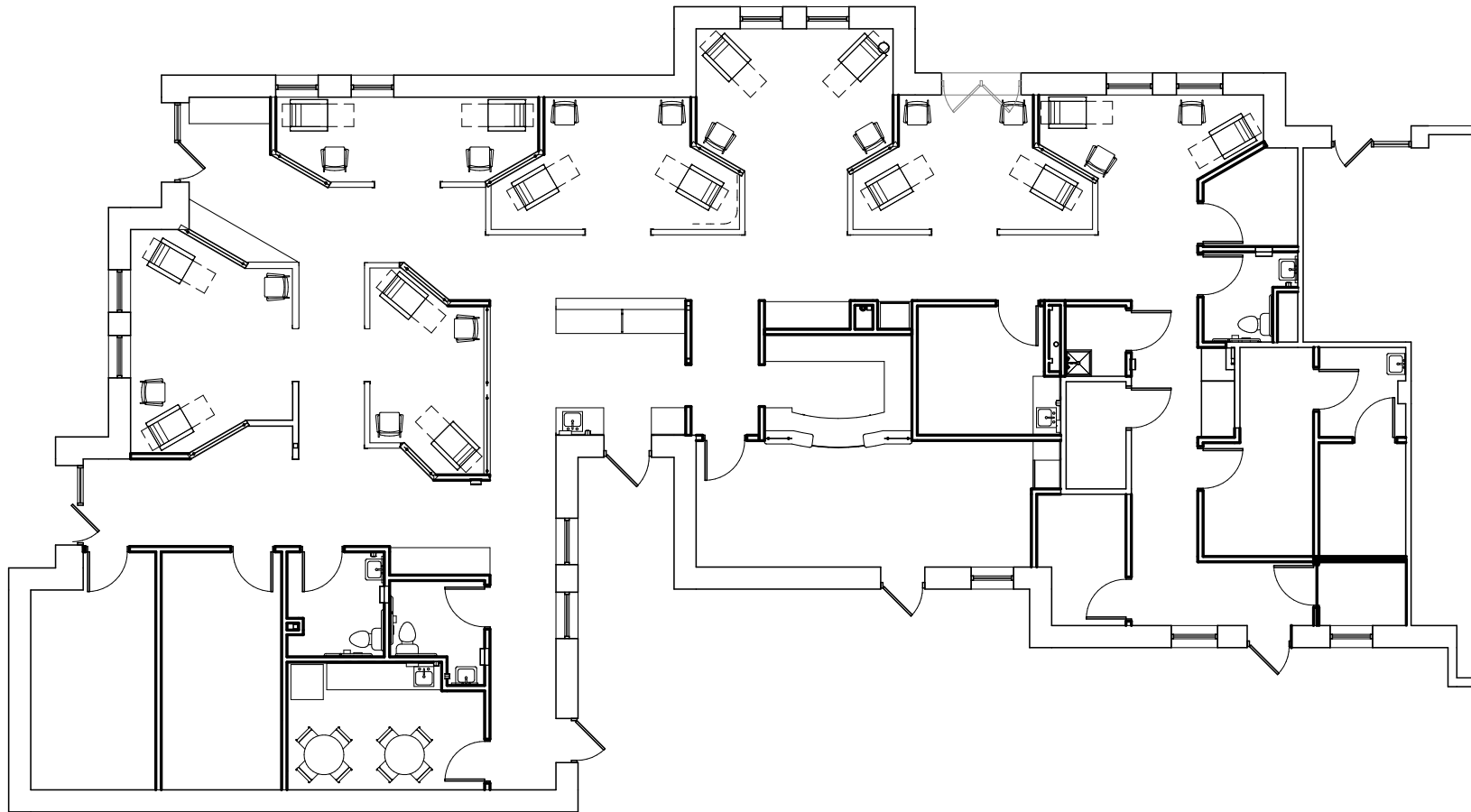


Although information has been obtained from sources deemed reliable, neither Owner nor JLL makes any guarantees, warranties or representations, express or implied, as to the completeness or accuracy as to the information contained herein. Any projections, opinions, assumptions or estimates used are for example only. There may be differences between projected and actual results, and those differences may be material. The Property may be withdrawn without notice. Neither Owner nor JLL accepts any liability for any loss or damage suffered by any party resulting from reliance on this information. If the recipient of this information has signed a confidentiality agreement regarding this matter, this information is subject to the terms of that agreement. © 2025 Jones Lang LaSalle IP, Inc. All rights reserved.

# Floor Plan - Bulding A

Santa Fe Medical Plaza  
9755 N 90th St, Scottsdale, AZ 85258

Built-out medical with high-end finishes in 2019  
Suite A100/A105: 4,250 SF



**Katie McIntyre**  
Senior Vice President  
T +1 602 282 6357  
M +1 602 538 3855  
katie.mcintyre@jll.com

**Mari Lederman**  
Senior Vice President  
T +1 602 282 6325  
M +1 602 705 8870  
mari.lederman@jll.com