

Uptown Class A Sublease at 2828 Harwood

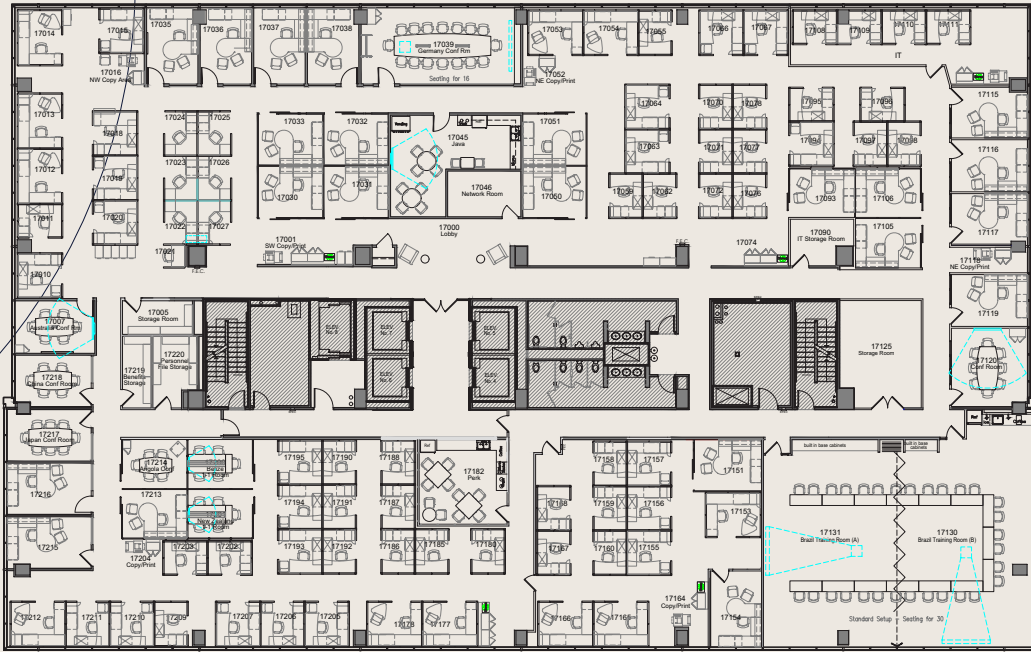
Hardwood N^o. 4

22,461 RSF

Available for Sublease



28 | N HARWOOD
28



- 6 Conference Rooms
- 71 Workstations
- 21 Offices
- 2 Kitchens
- 1 Large Training Room
- 2 Huddle Rooms

Highlights

- 

On-site concierge with services: dry cleaning, shoe shine, FedEx and UPS drop boxes



Car wash pick-up and delivery service
- 

Harwood GEM car transportation



Residential living available within the campus
- 

More than 8.5 acres of landscaped gardens and pocket parks



Seamless campus-wide Wi-Fi
- 

The Ann & Gabriel Barbier-Mueller Museum: The Samurai Collection

Property Features

10/31/2030
Rate Negotiable Term

3.00/1,000 SF
Parking

Furniture Available

New Amenities Coming Soon

Sophisticated tenant lounge
 Executive boardroom
 Cutting-edge conference center
 Modern fitness center

Leasing Info

Travis Boothe

Executive Managing Director

+1 972 663 9843

Travis.boothe@cushwake.com

Robbie Baty

Vice Chairman

+1 972 663 9781

Robbie.baty@cushwake.com

Hanna Henley

Senior Associate

+1 972 663 9965

Hanna.henley@cushwake.com



©2025 Cushman & Wakefield. All rights reserved. The information contained in this communication is strictly confidential. This information has been obtained from sources believed to be reliable but has not been verified. NO WARRANTY OR REPRESENTATION, EXPRESS OR IMPLIED, IS MADE AS TO THE CONDITION OF THE PROPERTY (OR PROPERTIES) REFERENCED HEREIN OR AS TO THE ACCURACY OR COMPLETENESS OF THE INFORMATION CONTAINED HEREIN, AND SAME IS SUBMITTED SUBJECT TO ERRORS, OMISSIONS, CHANGE OF PRICE, RENTAL OR OTHER CONDITIONS, WITHDRAWAL WITHOUT NOTICE, AND TO ANY SPECIAL LISTING CONDITIONS IMPOSED BY THE PROPERTY OWNER(S). ANY PROJECTIONS, OPINIONS OR ESTIMATES ARE SUBJECT TO UNCERTAINTY AND DO NOT SIGNIFY CURRENT OR FUTURE PROPERTY PERFORMANCE. COE-PM-CENTRAL- 09/19/25

