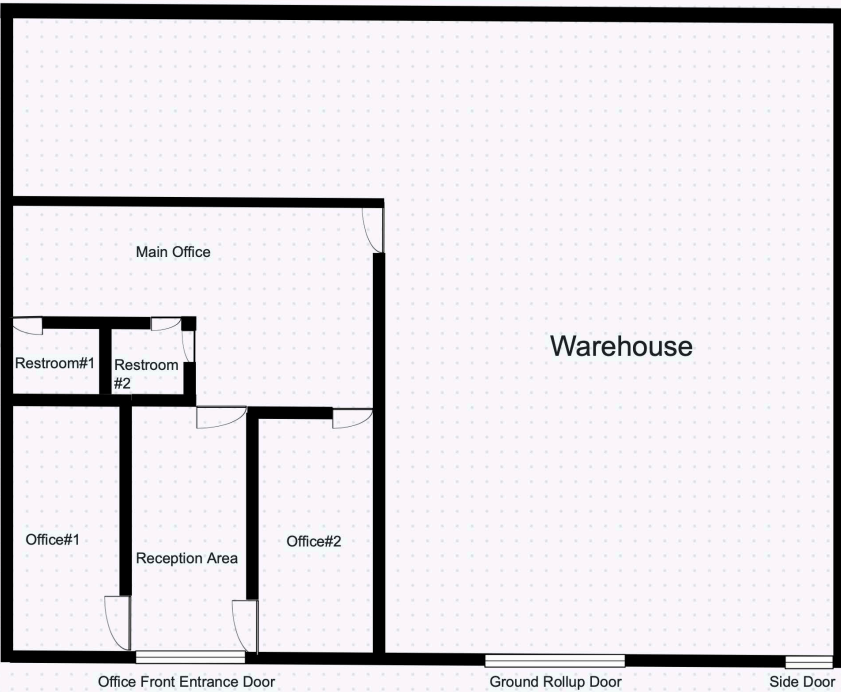


9843 Klingerman St., South El Monte, CA 91733

Building SF: 6,141 SQFT
Office SF: 1,300 SQFT
Lot: 12,307 SQFT
Year built: 1990
Power: 400Amp, 3-Phase
Clear Height: 16 FT
Ground Level Door: 1
Parking Space: 12
Zoning: SEM
Specific Use: Warehouse/Office



Rare opportunity to acquire a well-positioned industrial asset in the highly desirable South El Monte submarket. This property offers a functional layout ideal for owner-users or investors seeking stable industrial exposure in a supply-constrained area.

Offered for sale at

\$1,795,000.00

Dolly Yu Lin

Cal DRE # 01922765

Pinnacle Real Estate Group

M 626.228.5599

Email: DollyLinRealtor@gmail.com

Disclaimer: Information deemed reliable but not guaranteed. Buyer to verify all information independently.