

Site Profile



Alabama Site Selection Database

Northeast College Site

City: Dutton County: Jackson
 Micropolitan Area: Scottsboro



General Site Data	
Total Acres	100
Available Acres	96
Additional Available	Yes
Largest Tract	96
Smallest Tract	20
Protective Covenants	
Phase 1 Environmental	Yes
Preliminary Geotechnical:	Yes
Topography	Slight Rolling
Preliminary Wetlands Assessment:	Yes
Ecological Review:	Yes
Cultural Resources Review:	Yes
Zoning	None
Previous Use	Agriculture
Previous Use Description	Agriculture

Site Id: 4620
 Street Address County Road 47

Nearest City	Dutton
Within City Limits	No
Zip Code	35986
Latitude	34.5575
Longitude	-85.9062
Located in Industrial Park	No
Park Name	n/a
Within Enterprise Zone	Yes
Within Favored Geographic Area	No
Within Renewal Community	No

Transportation

Rail Service	Provider:
	Track Status: Not Specified
	Provider #2:
	Track Status: Not Specified

Navigable Waterway Dock Facility: Not Specified

Nearest Commercial Air City Miles to Nearest Service: 67

Highways

Highway Type	Highway Name	Miles to Access	Four Lane
Interstate	I-24	53.0	
Interstate	I-59	12.0	
Federal Highway	72	13.0	Yes
Alabama Highway	35	0.0	Yes

Price
 Sale Price \$15,000.00 per acre

Land Lease Rate (Annual)

Negotiable? Yes
 Date Quoted Sep 1, 2013

Price Comments

To meet the needs of industry, Alabama's economic development community is working to designate an inventory of industrial sites with sufficient site documentation for accurate, timely project evaluation. The AdvantageSite logo indicates that this property has met requirements for program designation. For more information on AdvantageSite and program requirements, visit our website.

This information has been secured from sources we believe to be reliable; however, we make no representation or warranties, expressed or implied, as to the accuracy of the information.

Economic Development Partnership of Alabama

www.edpa.org

Site Profile



Alabama Site Selection Database

Northeast College Site

City: Dutton County: Jackson
Micropolitan Area: Scottsboro

General Comments

The property is located between Scottsboro and Fort Payne near Rainsville, Alabama adjacent to Northeast Alabama Community College. It is an Alabama AdvantageSite and a TVA-designated Primary Data Center Site.

Site information is current as of 9/17/13

To meet the needs of industry, Alabama's economic development community is working to designate an inventory of industrial sites with sufficient site documentation for accurate, timely project evaluation. The AdvantageSite logo indicates that this property has met requirements for program designation. For more information on AdvantageSite and program requirements, visit our website.

This information has been secured from sources we believe to be reliable; however, we make no representation or warranties, expressed or implied, as to the accuracy of the information.

Economic Development Partnership of Alabama
www.edpa.org

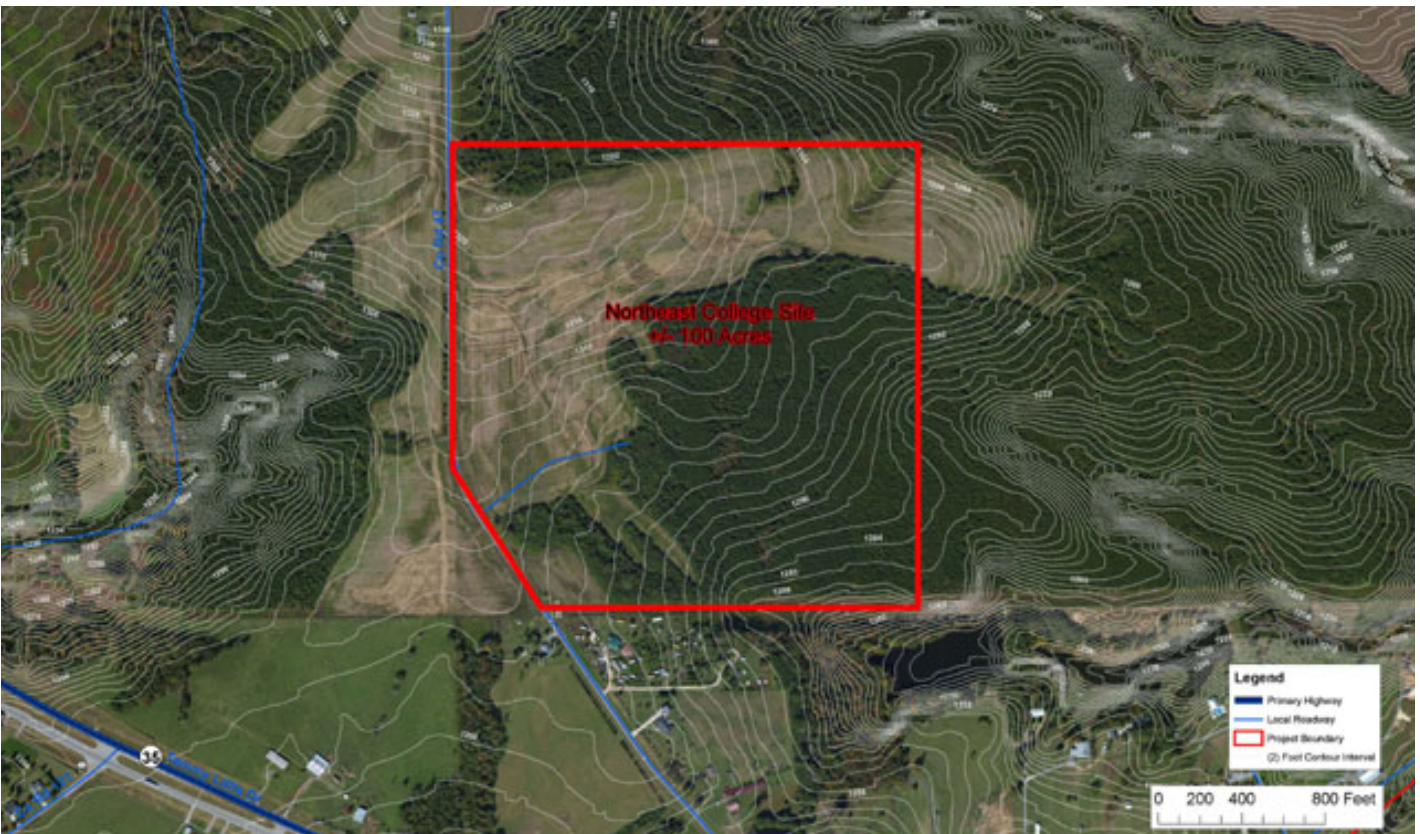
Site Profile



Alabama Site Selection Database

Northeast College Site

City: Dutton County: Jackson
Micropolitan Area: Scottsboro



To meet the needs of industry, Alabama's economic development community is working to designate an inventory of industrial sites with sufficient site documentation for accurate, timely project evaluation. The AdvantageSite logo indicates that this property has met requirements for program designation. For more information on AdvantageSite and program requirements, visit our website.

This information has been secured from sources we believe to be reliable; however, we make no representation or warranties, expressed or implied, as to the accuracy of the information.

Economic Development Partnership of Alabama

www.edpa.org

Site Profile



Alabama Site Selection Database

Northeast College Site

City: Dutton County: Jackson
Micropolitan Area: Scottsboro



To meet the needs of industry, Alabama's economic development community is working to designate an inventory of industrial sites with sufficient site documentation for accurate, timely project evaluation. The AdvantageSite logo indicates that this property has met requirements for program designation. For more information on AdvantageSite and program requirements, visit our website.

This information has been secured from sources we believe to be reliable; however, we make no representation or warranties, expressed or implied, as to the accuracy of the information.

Economic Development Partnership of Alabama

www.edpa.org