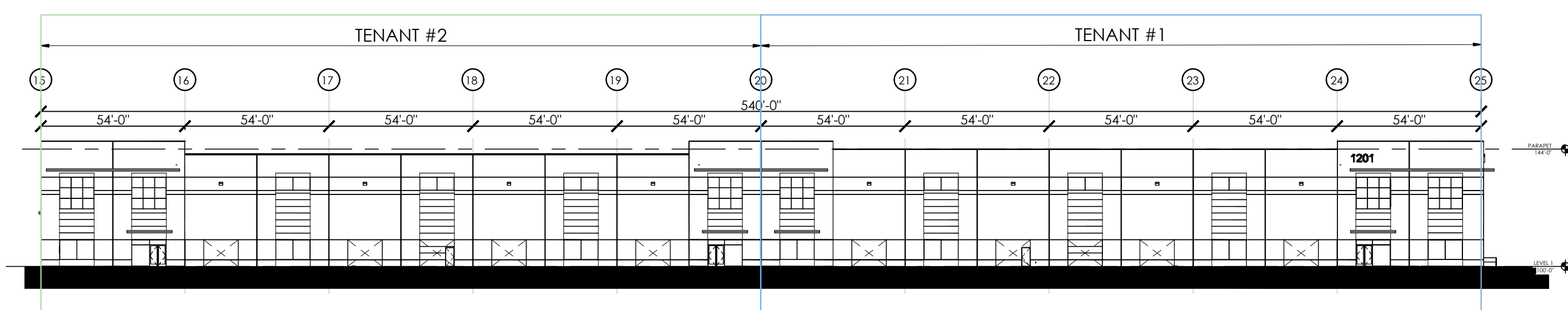
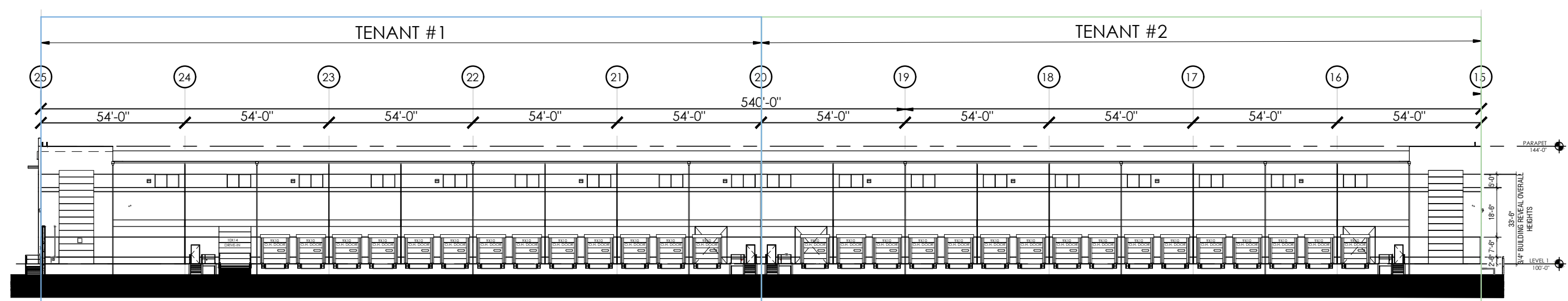


FLOOR PLAN 172,238 SF
742 SF COMMON
SCALE: 1" = 40'-0"
172,980 SF TOTAL



EAST ELEVATION
SCALE: 1" = 40'-0"

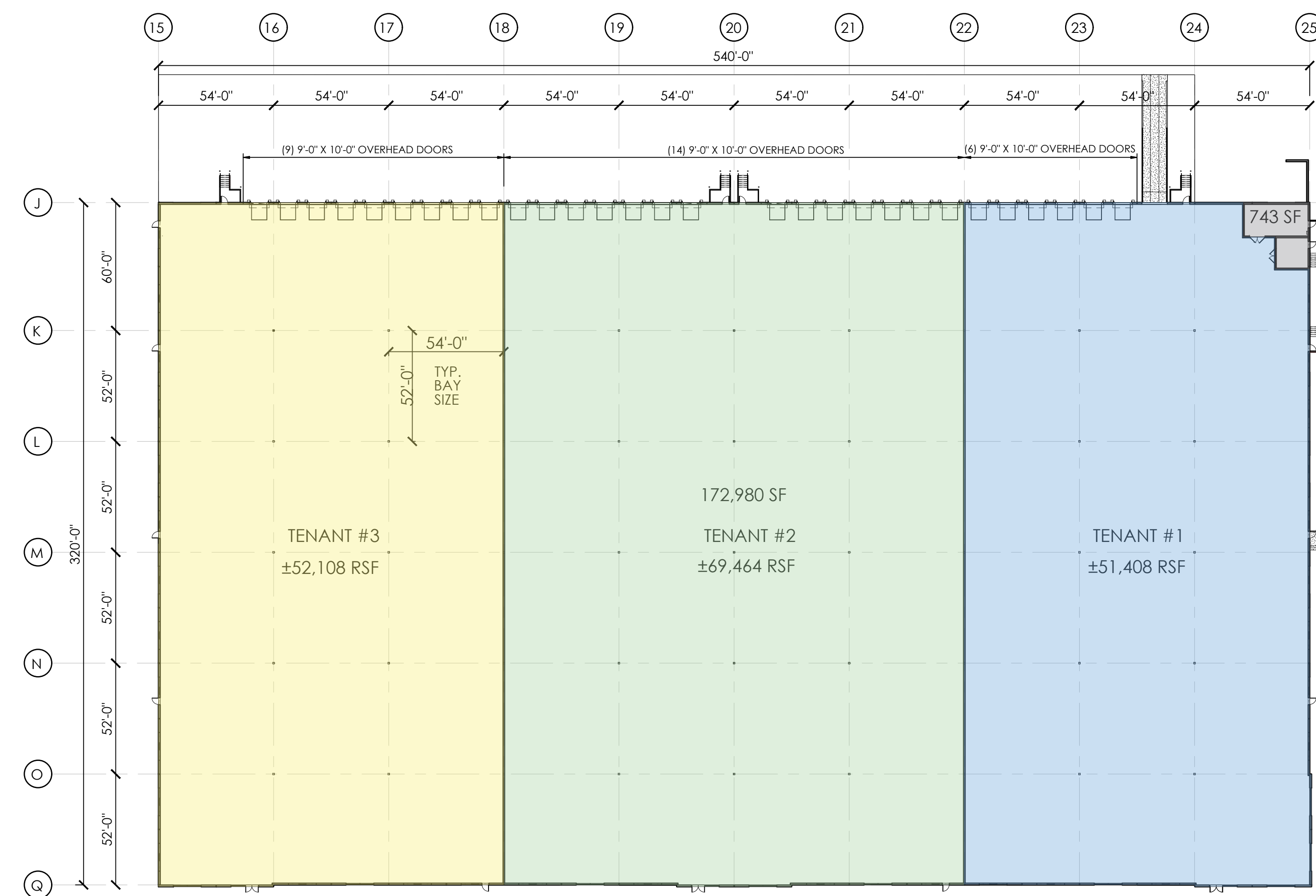


WEST/TRUCK COURT ELEVATION
SCALE: 1" = 40'-0"

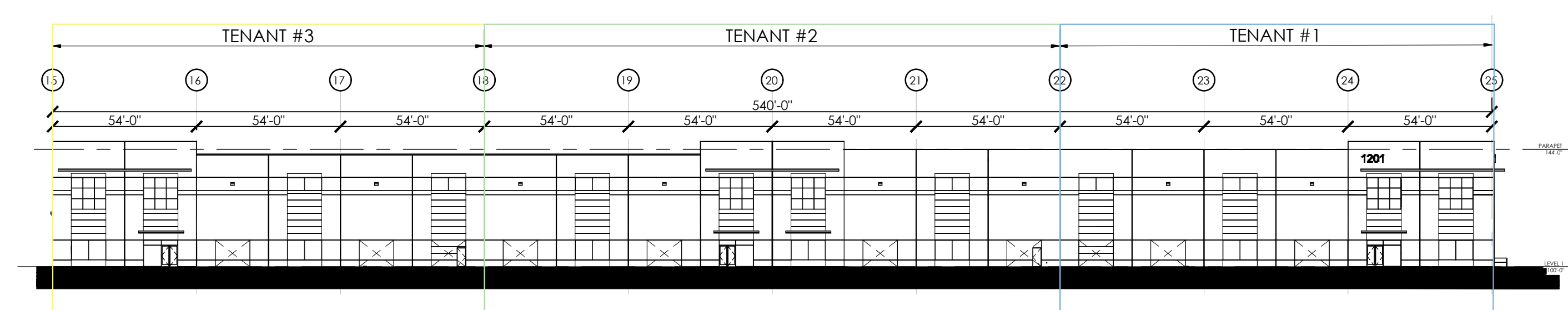
TENANT #1:
Area: 86,138 RSF
Dock Doors: 13
Drive-In Door w/Ramp: 1 (+1 future/knock-out)

TENANT #2:
Area: 86,842 RSF
Dock Doors: 16
Drive-In Door: 2 future/knock-outs

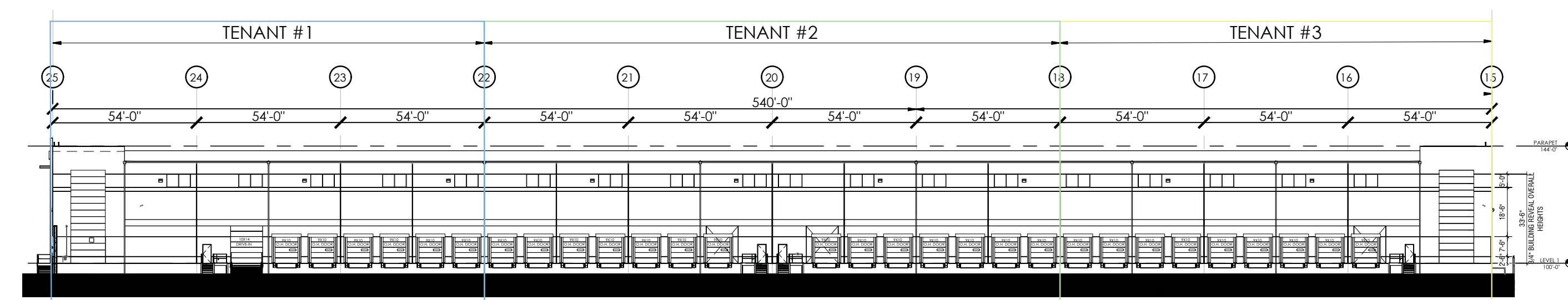
TWO-TENANT LAYOUT



FLOOR PLAN 172,238 SF
742 SF COMMON
SCALE: 1" = 40'-0"
172,980 SF TOTAL



EAST ELEVATION
SCALE: 1" = 40'-0"



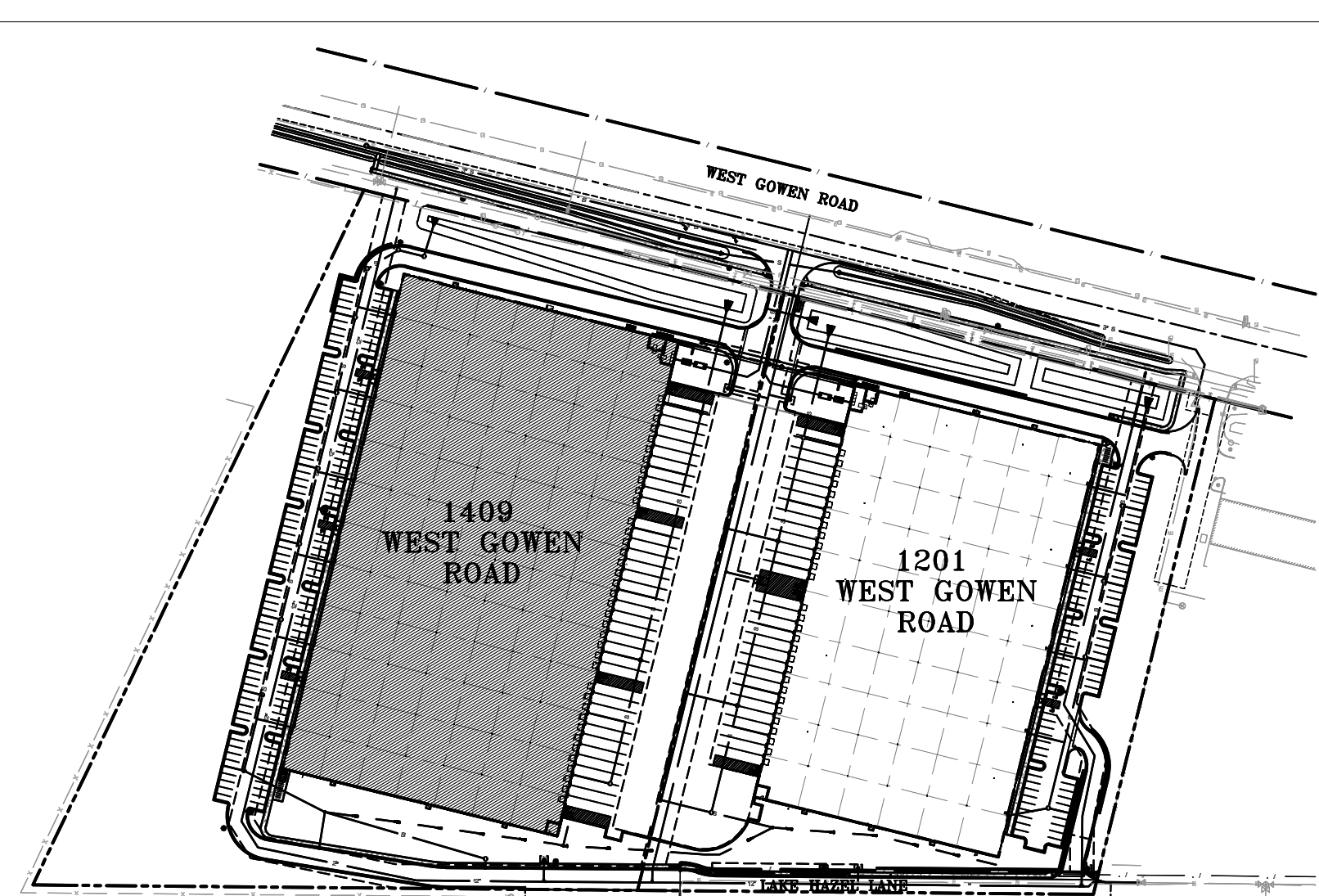
WEST/TRUCK COURT ELEVATION
SCALE: 1" = 40'-0"

TENANT #1:
Area: 51,408 RSF
Dock Doors: 6
Drive-In Door w/Ramp: 1

TENANT #2:
Area: 69,464 RSF
Dock Doors: 14
Drive-In Door: 2 future/knock-outs

TENANT #3:
Area: 52,108 RSF
Dock Doors: 9
Drive-In Door: 1 future/knock-out

THREE-TENANT LAYOUT



PLOT PLAN
SCALE: 1" = 80'-0"



REV. NO.	REV. DATE	DESCRIPTION	PROJECT NO.
		Sudwest Boise, LLC at HIGH WEST BUSINESS PARK 1201 West Gowen Road, Boise, ID	1409 WGR
		Marketing Plan: MULTI-TENANT LAYOUT OPTIONS	DRAWN BY MGD SCALE AS NOTED DATE 04-15-2025
			MP-2-B