

HILLSBOROUGH Office For Lease

\$515/MONTH + \$20 UTILITIES



960 CORPORATE DRIVE, STE 408, HILLSBOROUGH, NC, 27278



Quality office space in a professional setting with great parking, shared waiting area, and kitchenette.

Perfect for professional services or private healthcare provider and conveniently located just off I-85/I-40 and US 70, minutes from downtown Hillsborough.

Emilee Collins, CCIM
(919) 730-7040
emilee@pickettsprouse.com

Matthew Morton
(919) 864-0864
matthew@pickettsprouse.com

Property Details

Monthly Lease Rate

\$515 + \$20 Utilities

Square Footage

142 SF

Zoning

High Intensity Commercial

Parcel Number

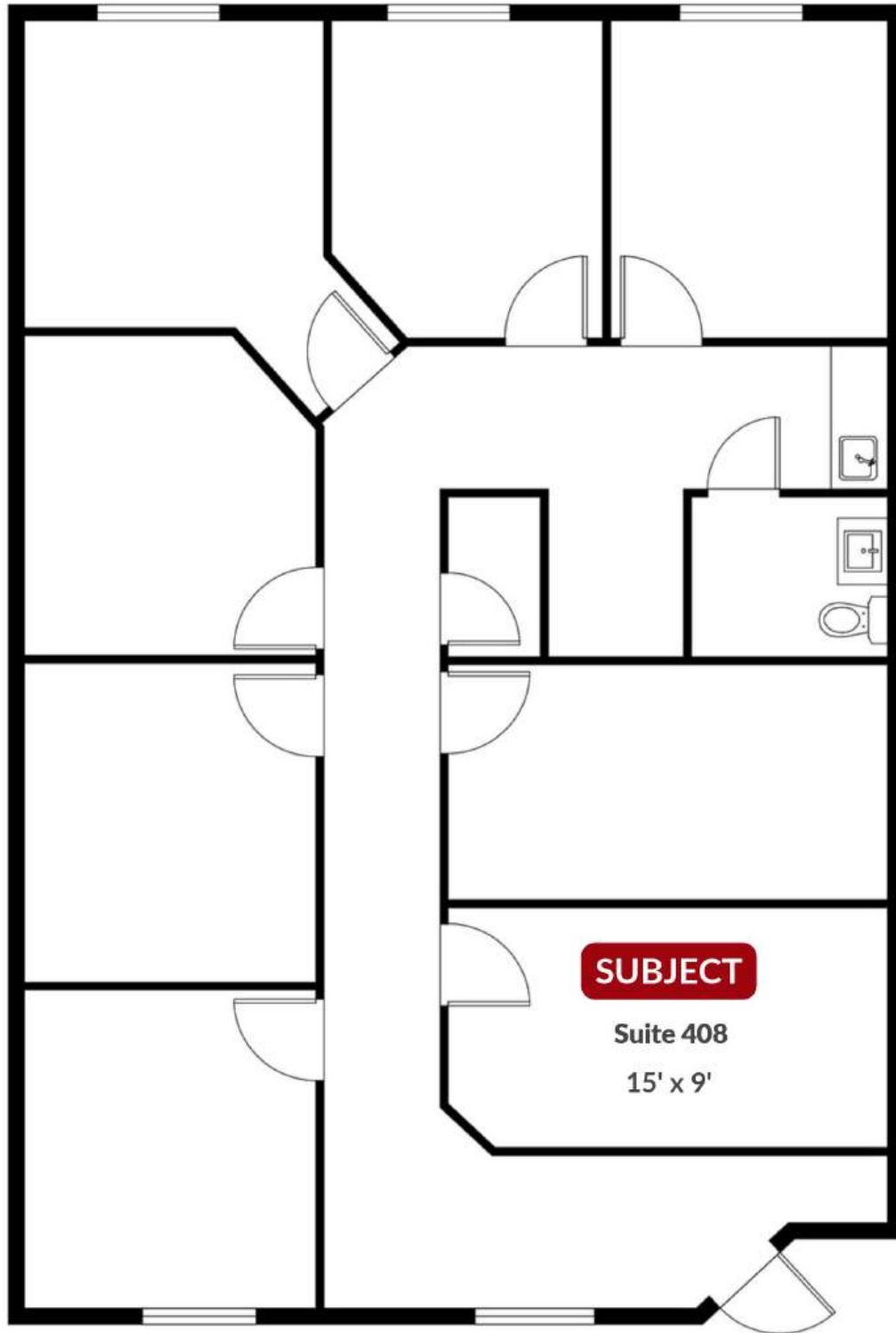
9874614816



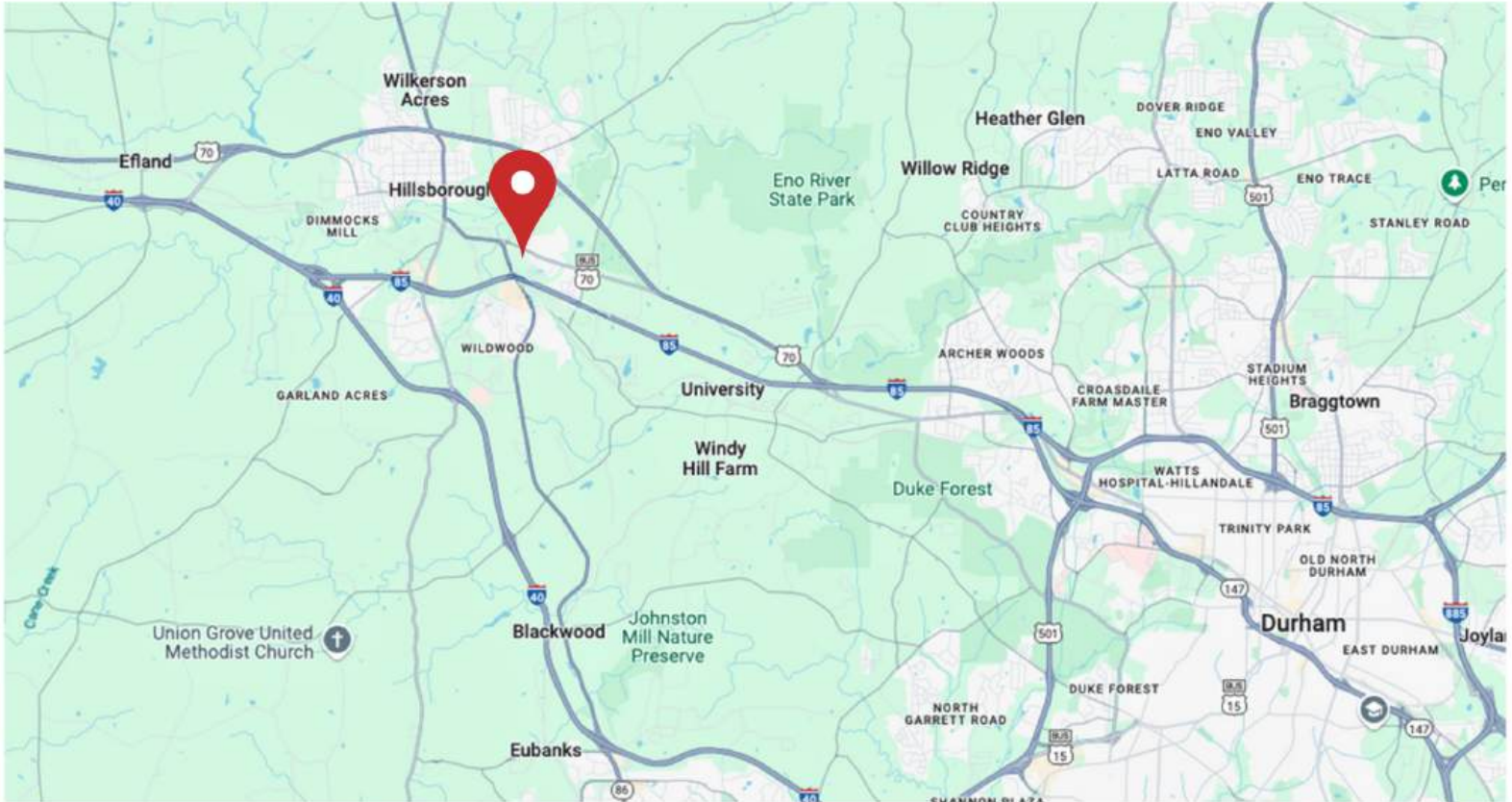
Emilee Collins, CCIM
(919) 730-7040
emilee@pickettsprouse.com

Matthew Morton
(919) 864-0864
matthew@pickettsprouse.com

Floor Plan



960 CORPORATE DRIVE, STE 408, HILLSBOROUGH, NC, 27278



Emilee Collins, CCIM
(919) 730-7040
emilee@pickettsprouse.com

Matthew Morton
(919) 864-0864
matthew@pickettsprouse.com