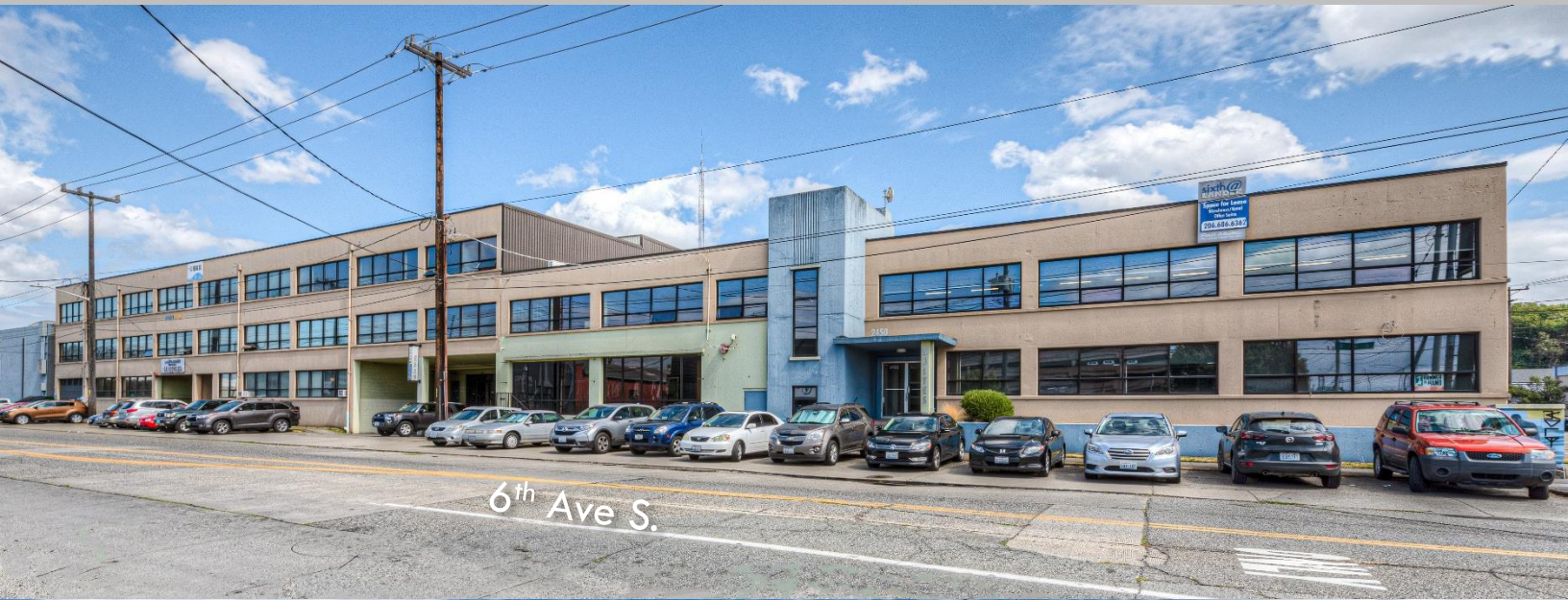


# SODO - 6<sup>th</sup> & Lander

2450 6<sup>th</sup> Ave S., Suite 302

Seattle, WA 98134



# FOR LEASE

## Professional Office

CONTACT:

MARK TEMMEL

(206) 307-5726

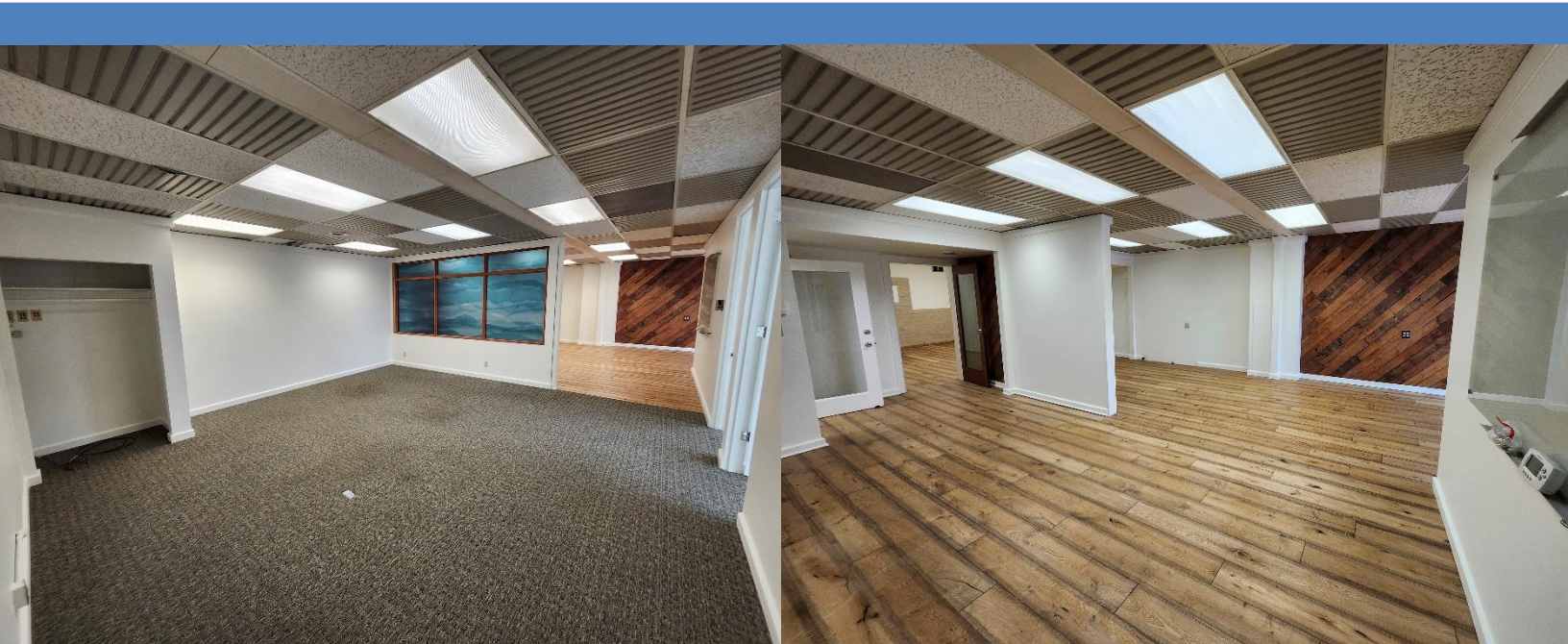
[mark@temmelre.com](mailto:mark@temmelre.com)

Temmel Real Estate

# SPACE DETAILS

Located one block from the SODO light rail station, this 2,760 SF move-in ready professional office or creative workspace is available now. Suite 302 has three private offices, tons of open co-working space, a conference room and a reception area. The space can be demised to 1,118 SF which is all of the wood vinyl flooring in the pictures. Asking rate of \$15/sq.ft. + NNN (\$6.36/SF). NNN charges include utilities and in-suite janitorial 3x a week. There is free street parking in front of the building. Easy access to I-5, Hwy 99 and I-90.

[VIDEO TOUR](#)



<b>Square Feet</b>	<b>1,118 - 2,760 (BOMA)</b>
<b>Base Rent</b>	<b>\$15/SF</b>
<b>NNN</b>	<b>\$6.36/SF</b>
<b>Available</b>	<b>Now</b>
<b>Suite</b>	<b>302</b>

