

Available for Lease

119 Washington Street, Norwalk, CT



OVERVIEW

SIZE

1,280 sf (Ground Floor)
1,923 sf (Basement)

COTENANCY

Lazy Sister, Mecha Noodle Bar, Eco Evolution, Donovan's, Oishi, Match, Himalaya, MaaMa by Cheese and Bread, Tablao, Brass & Bone, Norwalk Bagel Co., and more!

COMMENTS

Easy access to I-95 and 7 Connector, walk to SoNo Train Station, 5 Private and Municipal Parking Garages within walking distance. Over 20 new construction apartment buildings in South Norwalk!

CENSUS

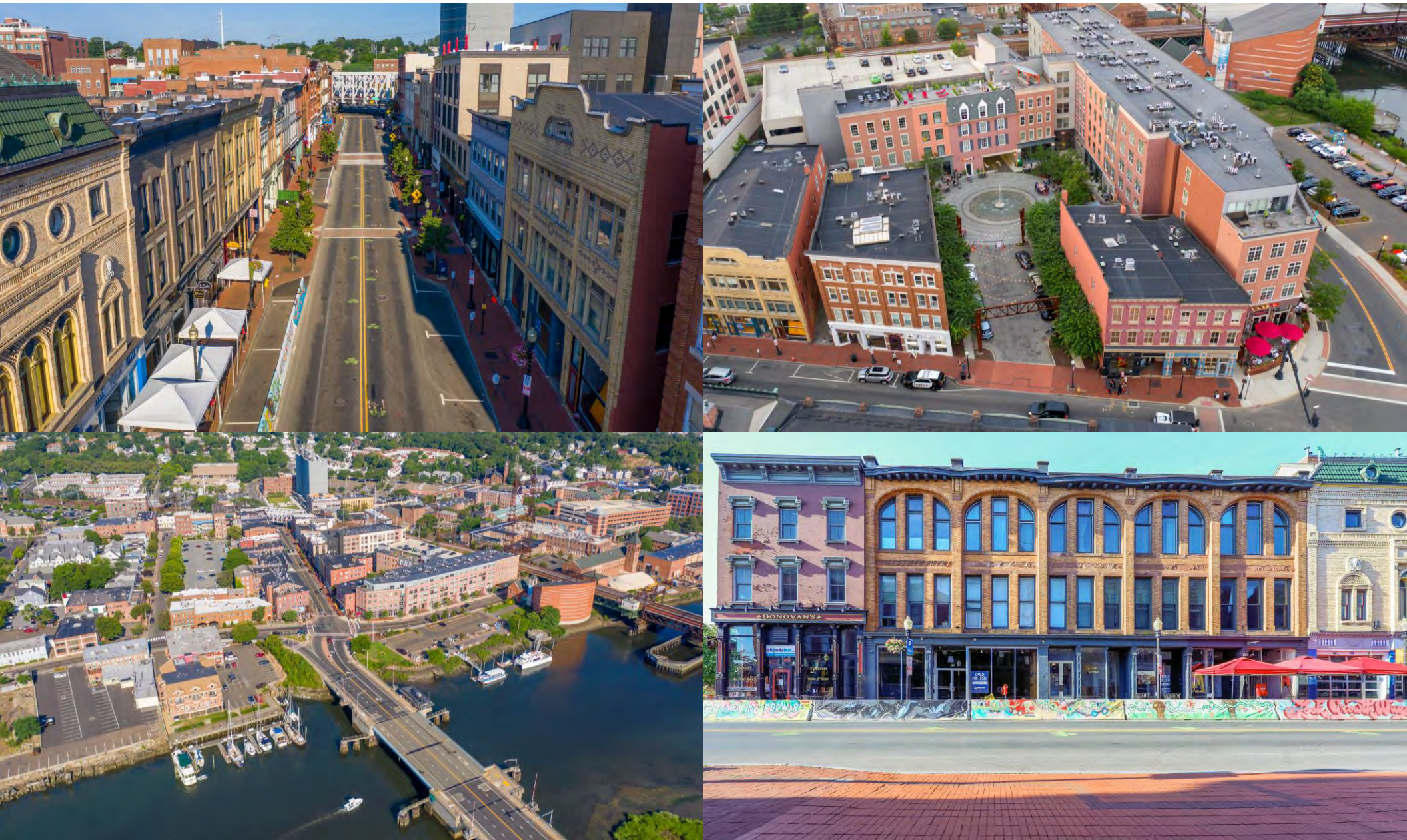
95,043 people (6th largest city in CT)

The Washington Street Historic District is a highly preserved landmarked community at the convergence of new construction apartment buildings, hotels, a gorgeous waterfront, and a 24/7 eat, shop, and live culture.

Welcome to the Washington Street Historic District.



Welcome to the Washington Street Historic District.



119 Washington Street | South Norwalk, CT



119 Washington Street | South Norwalk, CT



119 Washington Street | South Norwalk, CT

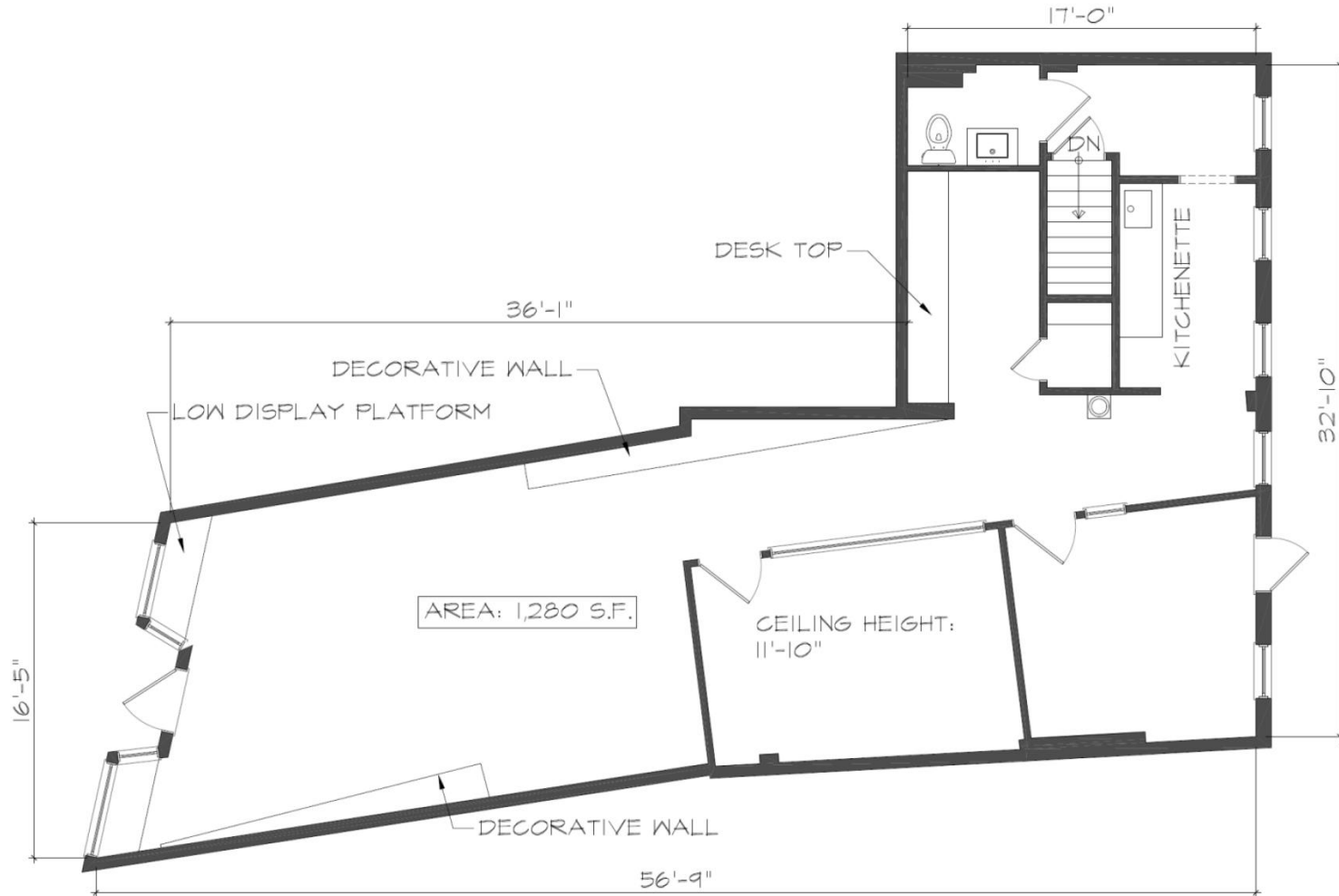


119 Washington Street | South Norwalk, CT



119 Washington Street | South Norwalk, CT

Any dimensions provided are approximate and should not be used for construction



1 FIRST FLOOR PLAN

SCALE: 3/16"=1'-0"

TENANT SPACE SURVEY

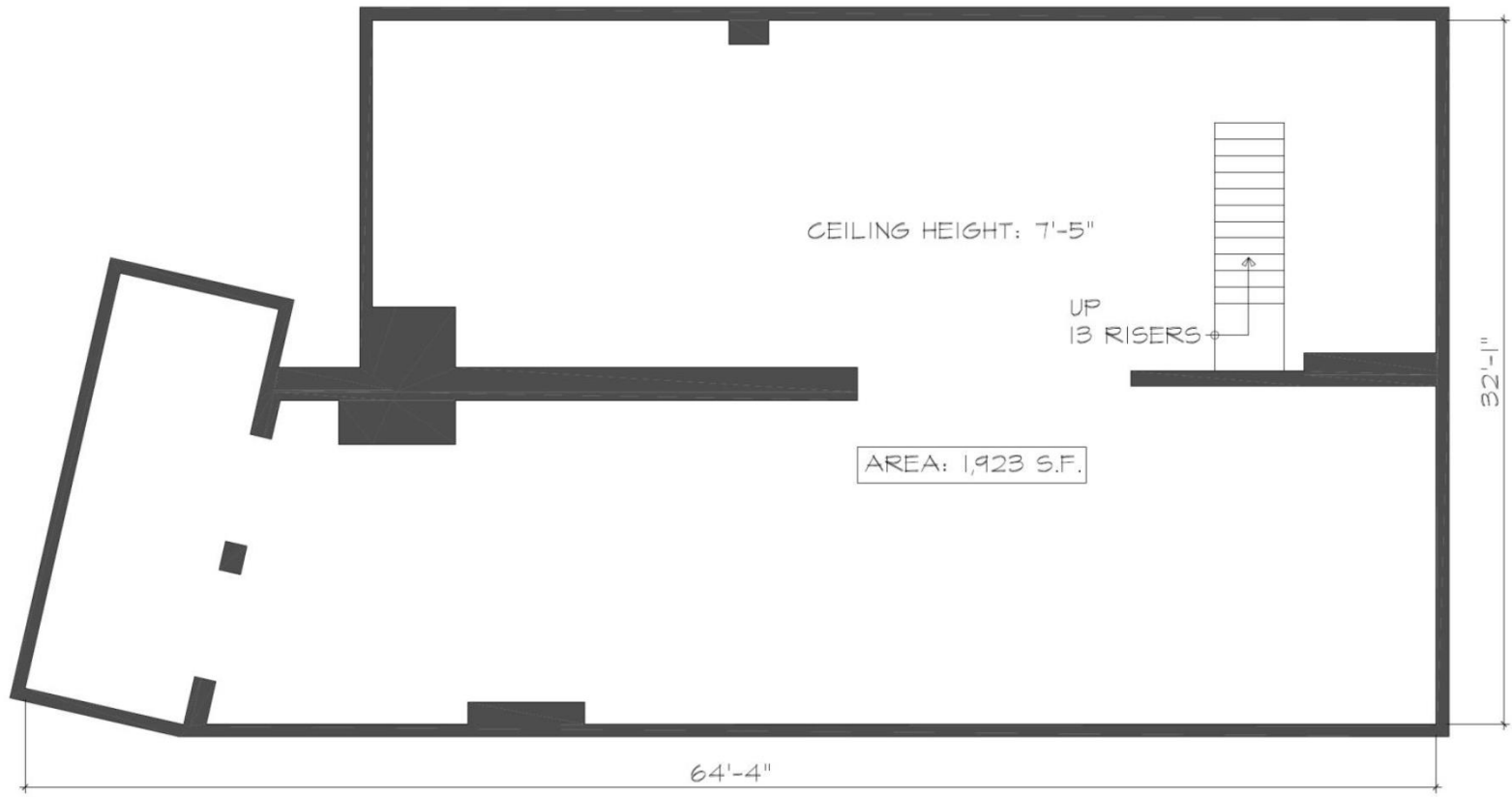
AGW SONO Partners LLC

97-77 Queens Boulevard,
Suite 620
Rego Park, NY 11374

119 WASHINGTON STREET
NORWALK, CT. 06854

119 Washington Street | South Norwalk, CT

Any dimensions provided are approximate and should not be used for construction.



TENANT SPACE SURVEY

1 BASEMENT FLOOR PLAN

SCALE: 3/16"=1'-0"

AGW SONO Partners LLC

97-77 Queens Boulevard,
Suite 620
Rego Park, NY 11374

119 WASHINGTON STREET
NORWALK, CT. 06854