

LEASE

15634 NORTHWEST US HIGHWAY 441 #E

15634 Northwest US Highway 441 #E, Alachua, FL 32616



PROPERTY DESCRIPTION

Retail space for lease on NW HWY 441 in Alachua! Minutes from I-75, close and convenient to Gainesville and surrounding areas. Large storefront windows providing natural lighting, signage, reception, mostly open floor plan, restroom, and plenty of parking! Come join other tenants such as: Moe's Southwest Grill, South Beach Tanning Company, One Stop Medical and Urgent Care, Dominoes, TB Goods, Mi Apa Latin Cafe, and Life South Community Blood Centers! Lease rate is based upon a 5 year lease. Suite E is part of a former dance studio.

OFFERING SUMMARY

Lease Rate:	\$2,340.00 per month (NNN)
Available SF:	1,560 SF
Building Size:	17,190 SF
Zoning:	CBD- Commercial Business District
APN:	03869-011-000

DEMOGRAPHICS	1 MILE	3 MILES	5 MILES
Total Households	501	2,191	4,874
Total Population	1,038	4,867	11,354
Average HH Income	\$68,768	\$70,523	\$71,513

Craig Carter
352 339 4038

Michelle Carter
352 339 5734

Dean R. Cheshire
352 745 1883

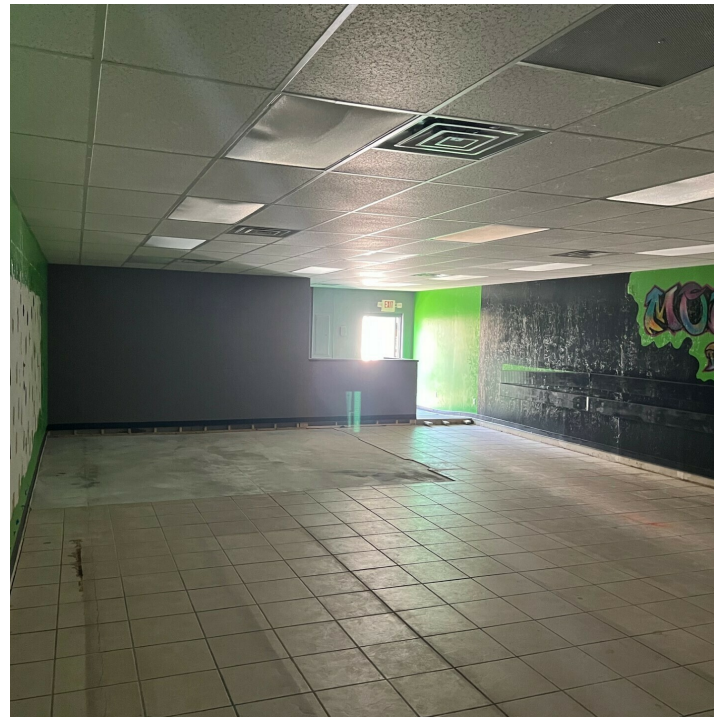
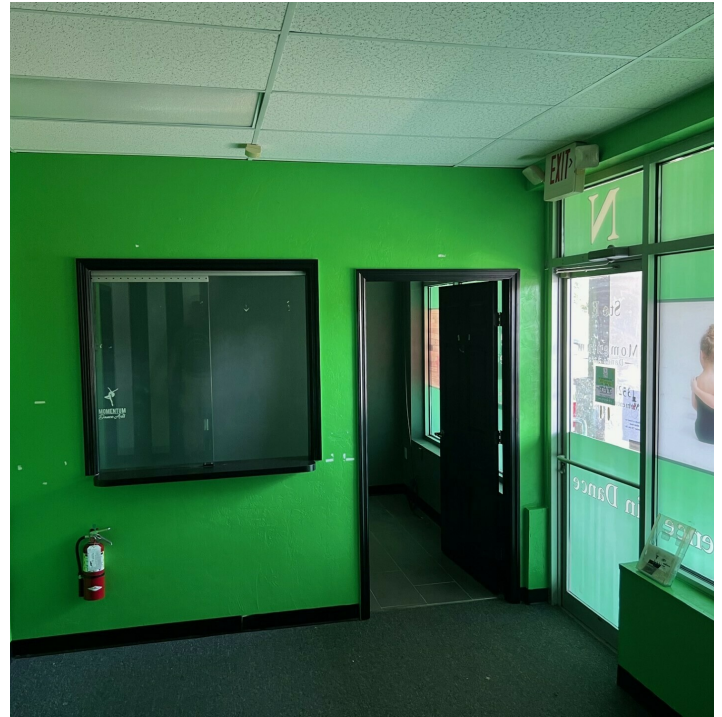


**COLDWELL BANKER
COMMERCIAL**
M.M. PARRISH REALTORS

LEASE

15634 NORTHWEST US HIGHWAY 441 #E

15634 Northwest US Highway 441 #E, Alachua, FL 32616



Craig Carter
352 339 4038

Michelle Carter
352 339 5734

Dean R. Cheshire
352 745 1883

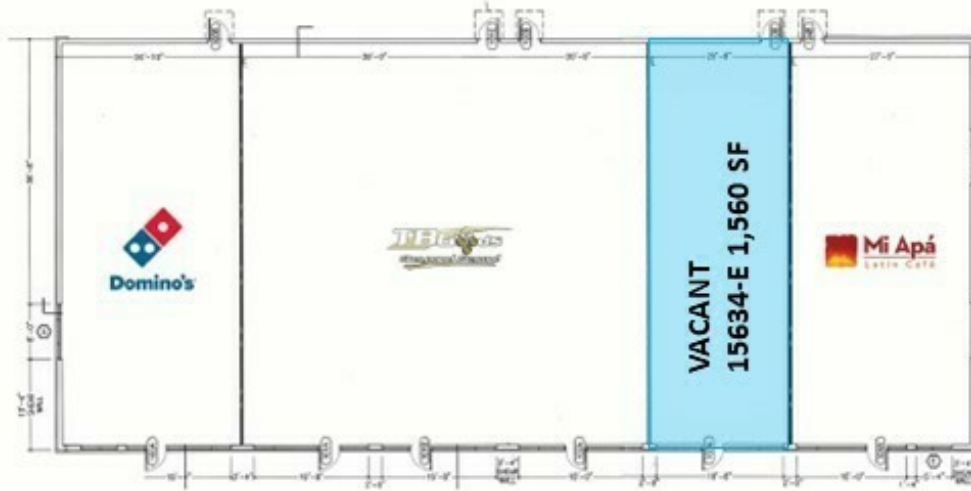


**COLDWELL BANKER
COMMERCIAL**
M.M. PARRISH REALTORS

LEASE

15634 NORTHWEST US HIGHWAY 441

15634 Northwest US Highway 441 Alachua, FL 32616



Craig Carter
352 339 4038

Michelle Carter
352 339 5734

Dean R. Cheshire
352 745 1883

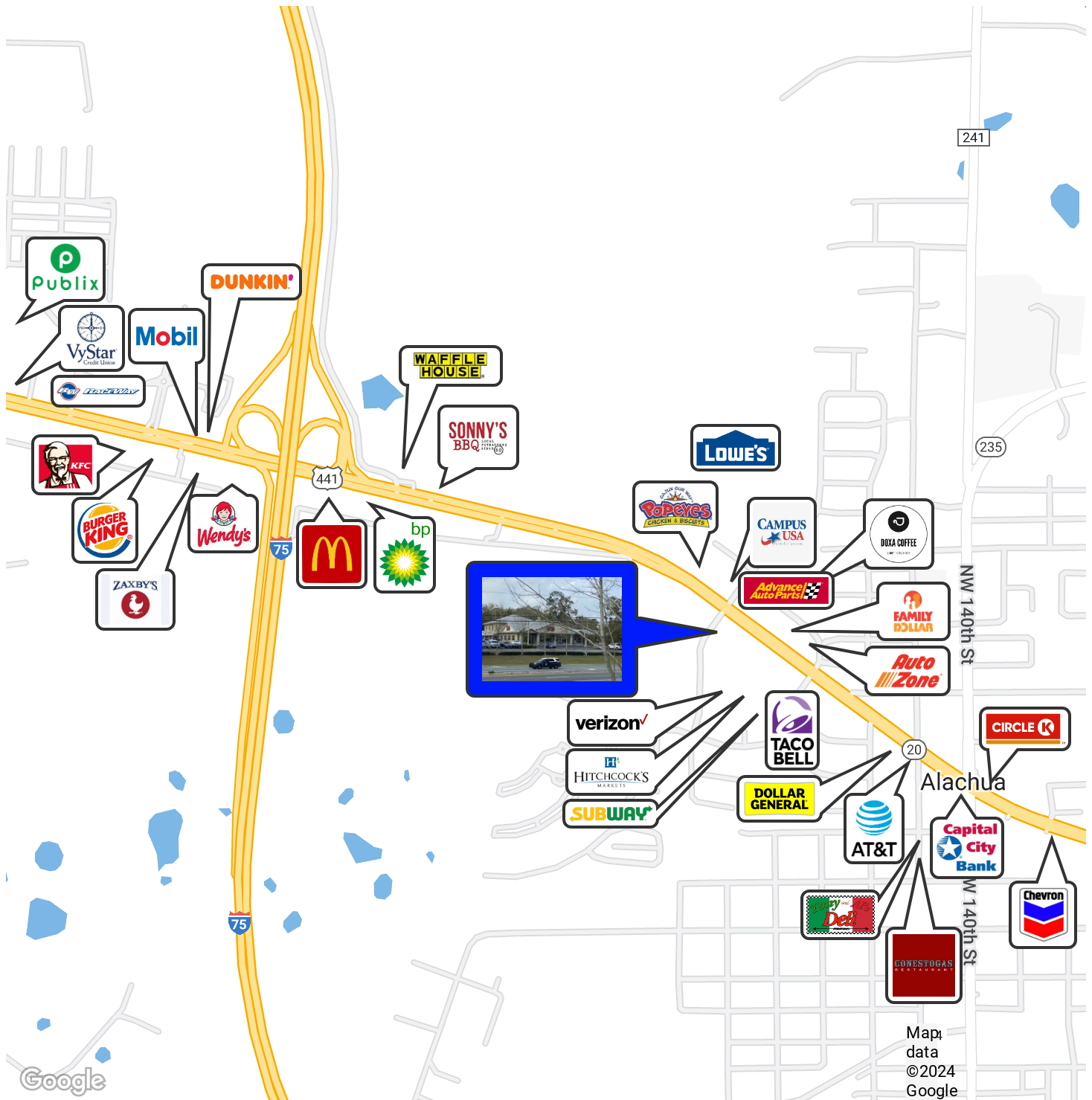


COLDWELL BANKER
COMMERCIAL
M.M. PARRISH REALTORS

LEASE

15634 NORTHWEST US HIGHWAY 441 #E

15634 Northwest US Highway 441 #E, Alachua, FL 32616



Craig Carter
352 339 4038

Michelle Carter
352 339 5734

Dean R. Cheshire
352 745 1883



**COLDWELL BANKER
COMMERCIAL**
M.M. PARRISH REALTORS



352.745.1883

dean@mmparrish.com

352.339.5734

mcarter@mmparrish.com

352.339.4038

ccarter@mmparrish.com

The CRE Pro Team has been the dominant commercial presence in North Central Florida for many years. Working with private owners as well as multiple government entities, we have worked on both sides of hundreds of transactions with selling and leasing in all asset classes. Dean grew up in the world of real estate, construction and development. He graduated cum laude from the University of Florida and subsequently earned the distinction of an MBA from the Hough Graduate School of Business at the University of Florida. Craig has been a business owner, a private real estate investor and a City Commissioner. His out-of-the-box thinking and determination have delivered strong successes for his many clients in the commercial real estate industry. Michelle offers many years of business marketing experience and organizational precision in the development of innovative ways to market properties. The CRE Pro Team has drawn from their vast experience and education and have been multi-million-dollar producers for many years.

Learn more about the CRE Pro Team or see their listings at www.CREProTeam.com.

