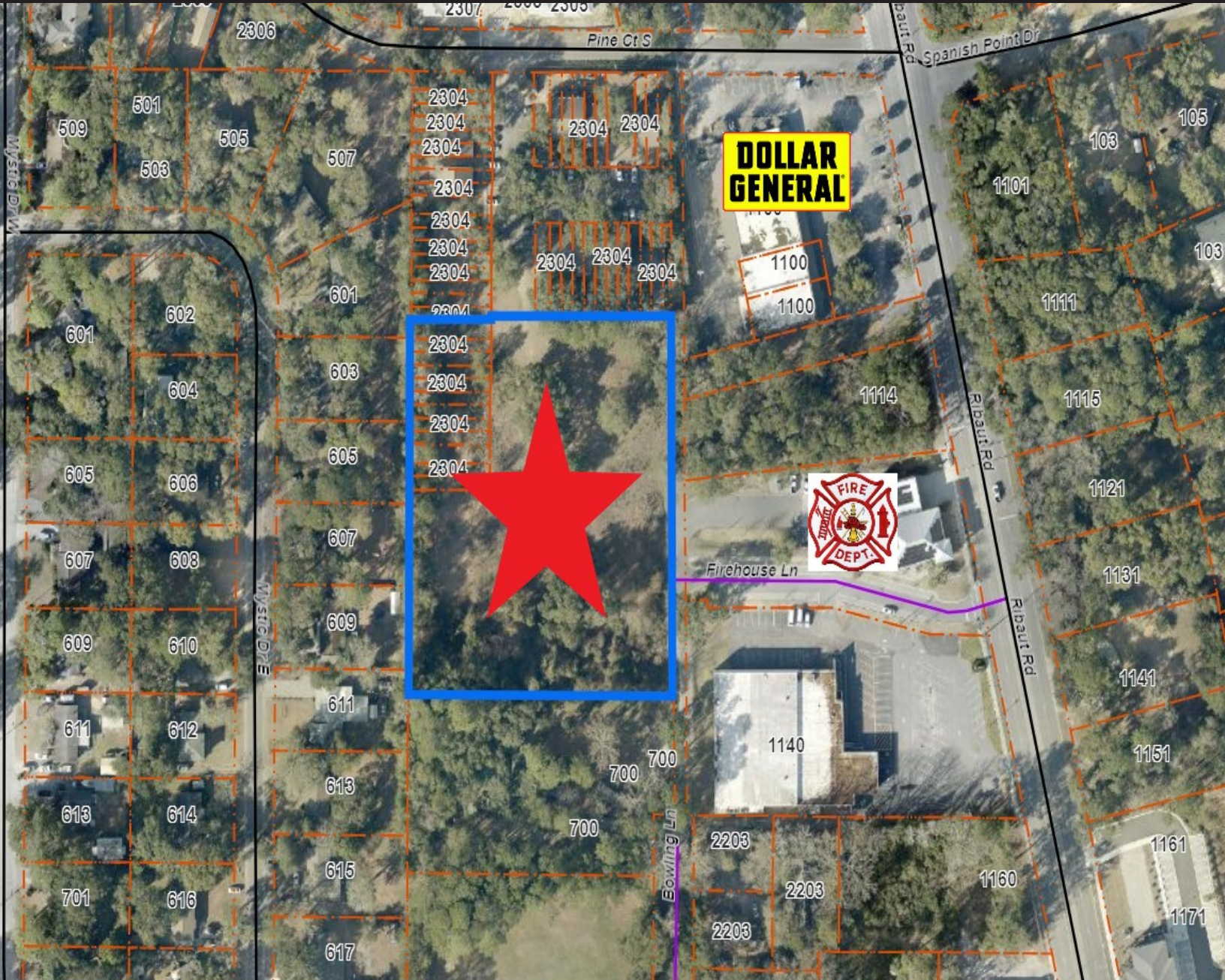




CHARTER ONE | COMMERCIAL
REALTY

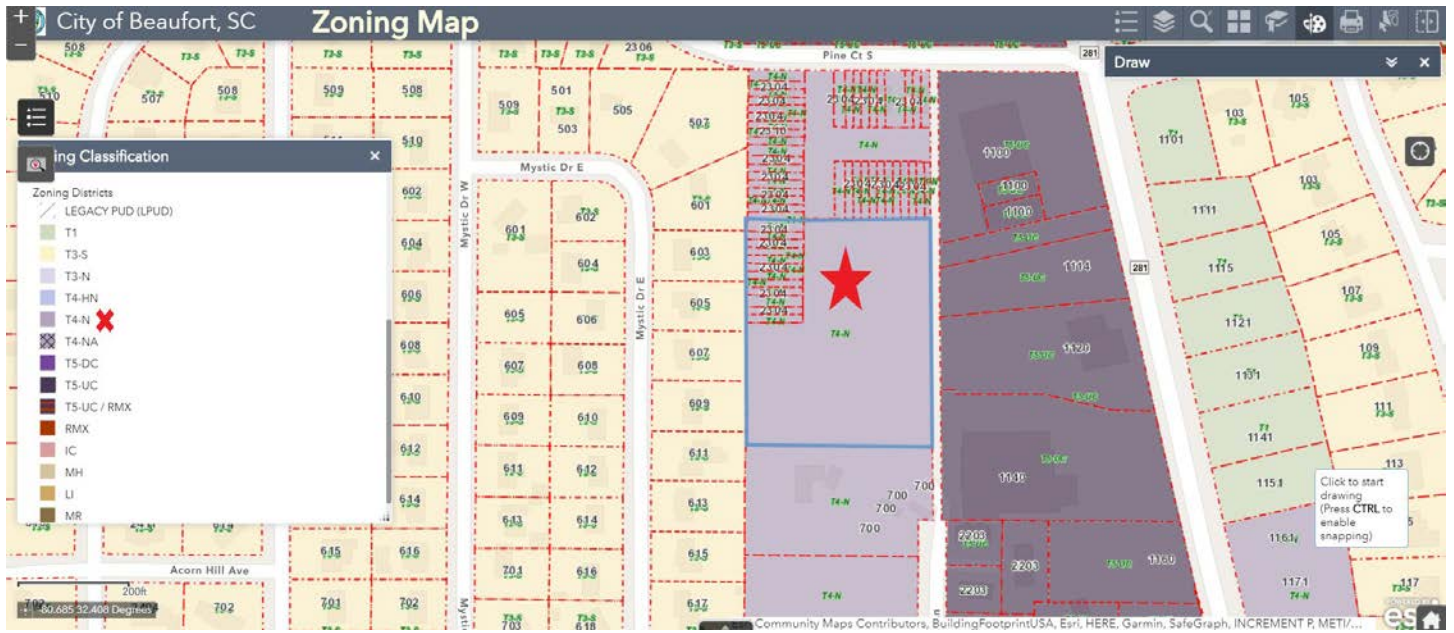
**0 FIREHOUSE LANE
BEAUFORT, SC 29902**

3.04 Acres | \$725,000



3 acres of land zoned T4 Neighborhood in City of Beaufort. Located behind the Fire Station, close to shopping, medical offices, Beaufort Memorial hospital and the Technical College of the Lowcountry. Very good opportunity for housing or office project. Total property includes 12 different parcel numbers. Ask for map and list.

MICHAEL MARK, CCIM
MMARK@CCIM.NET | 843.812.6023
WWW.MICHAELMARKCCIM.COM



Welcome to SCDOT's Traffic Count Comparison application. This application will allow you to view traffic count data from the period of 2009-2019.

To view this data in tabular form; click here

To download the entire dataset, click the link in the popup.

To view pdf maps of the station locations by county or metro area; click here.

To search for a specific location, click the magnifying glass to the right and type in the full address including city and state.

If you are using a GPS enabled device, click on the locate me button. The locate me button is directly above the magnifying glass.

Traffic Counts 2019: BEAUFORT

Count: 18,100

Route ID: SC-281 Main Line

Good From S- 151 (MOSSY OAKS RD) TO S- 6 (DEPOT RD)

Station Number: 207

County Name: BEAUFORT

Download the entire data set [here](#).

Powered by **esri**

