



FOR SALE

Former Fast Food Drive-Thru Restaurant



205 Trask Street | Bakersfield, CA

Property Features:

- Purchase opportunity
- I-5 highway site with limited proximate competition
- Formerly occupied by Jack-in-the-Box
- Immediate availability

APN: 160-190-15-00-7

Building Size: ± 2,713 SF

Parcel Size: ± 48,787 SF

Sales Price: Call Agent for Details

Traffic Counts: I-5 ±42,000 ADT

Highway 58 ±10,200 ADT

Total: ±52,200 ADT

Source: REgisOnline



COMMERCIAL | RETAIL ASSOCIATES

7502 North Colonial Avenue, Suite 101
Fresno, California 93711
www.RetailAssociates.com

For more information, please contact:

Doug Cords

Direct Line: 559/650.1307

dcords@retailassociates.com

DRE License #01264420

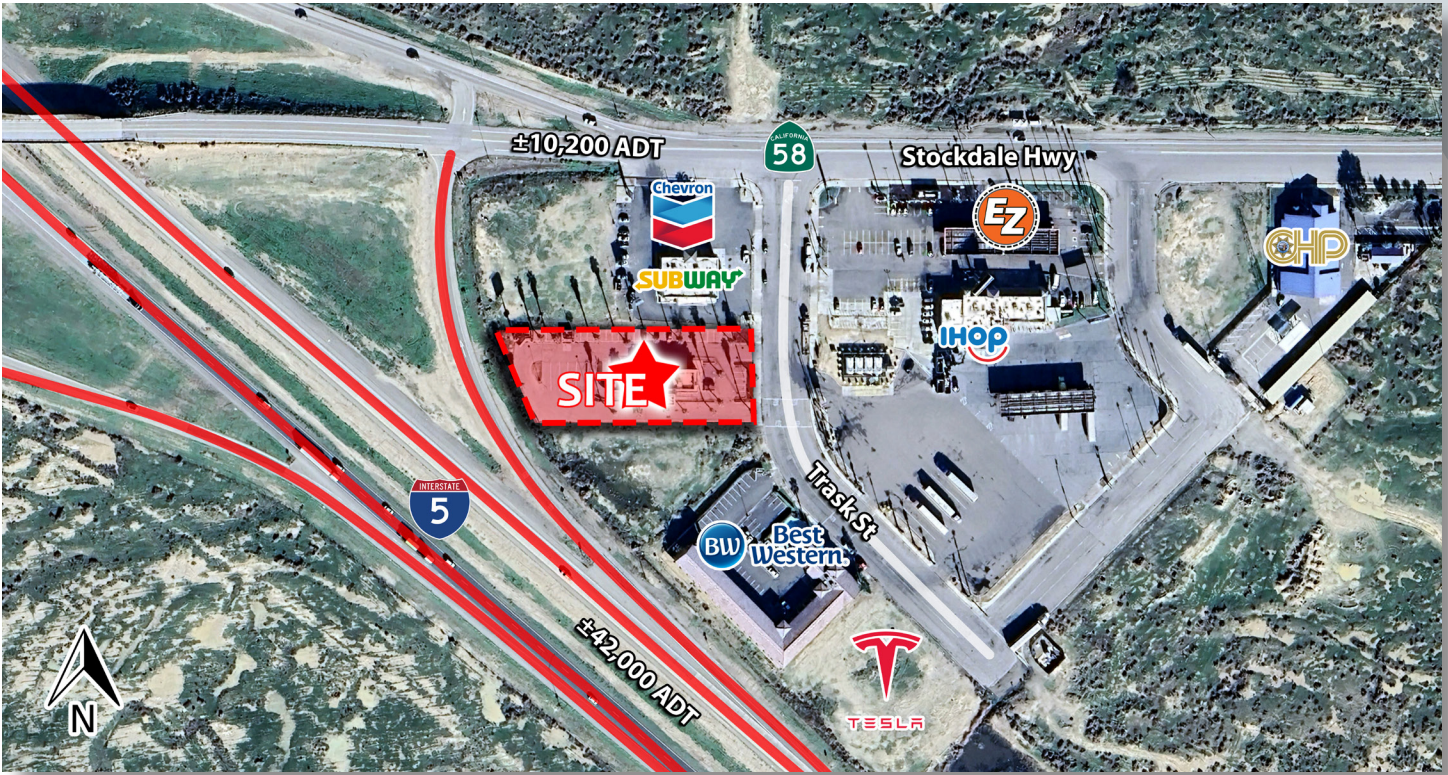
All projections, opinions, assumptions or estimates are supplied for example only and may not represent current or future performance of the property. Any and all information pertaining to location, demographics and the site plan is supplied by sources believed to be reliable. We do not guarantee the accuracy of information and make no warranty or representation thereto. All information is presented herewith the possibility of errors, omissions, change of price, rental or other conditions, prior sale, lease or financing, or withdrawal without notice. Commercial Retail Associates operates under the corporate Department of Real Estate License #01121565.





FOR SALE

Former Fast Food Drive-Thru Restaurant



For more information, please contact:

Doug Cords

Direct Line: 559/650.1307

dcords@retailassociates.com

DRE License #01264420



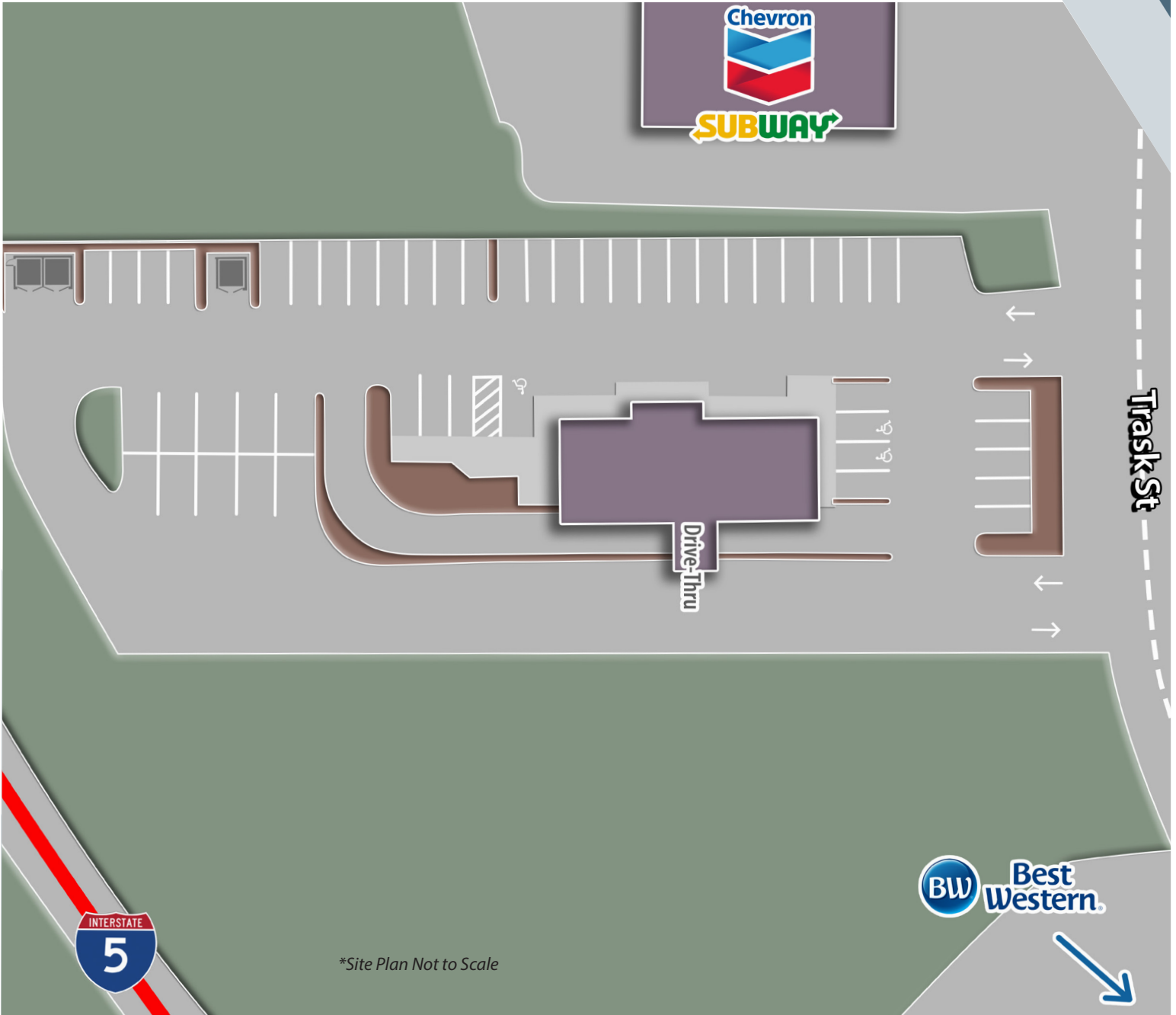
All projections, opinions, assumptions or estimates are supplied for example only and may not represent current or future performance of the property. Any and all information pertaining to location, demographics and the site plan is supplied by sources believed to be reliable. We do not guarantee the accuracy of information and make no warranty or representation thereto. All information is presented herewith the possibility of errors, omissions, change of price, rental or other conditions, prior sale, lease or financing, or withdrawal without notice. Commercial Retail Associates operates under the corporate Department of Real Estate License #01121565.





FOR SALE

Former Fast Food Drive-Thru Restaurant



For more information, please contact:

Doug Cords

Direct Line: 559/650.1307

dcords@retailassociates.com

DRE License #01264420

All projections, opinions, assumptions or estimates are supplied for example only and may not represent current or future performance of the property. Any and all information pertaining to location, demographics and the site plan is supplied by sources believed to be reliable. We do not guarantee the accuracy of information and make no warranty or representation thereto. All information is presented herewith with the possibility of errors, omissions, change of price, rental or other conditions, prior sale, lease or financing, or withdrawal without notice. Commercial Retail Associates operates under the corporate Department of Real Estate License #01121565.



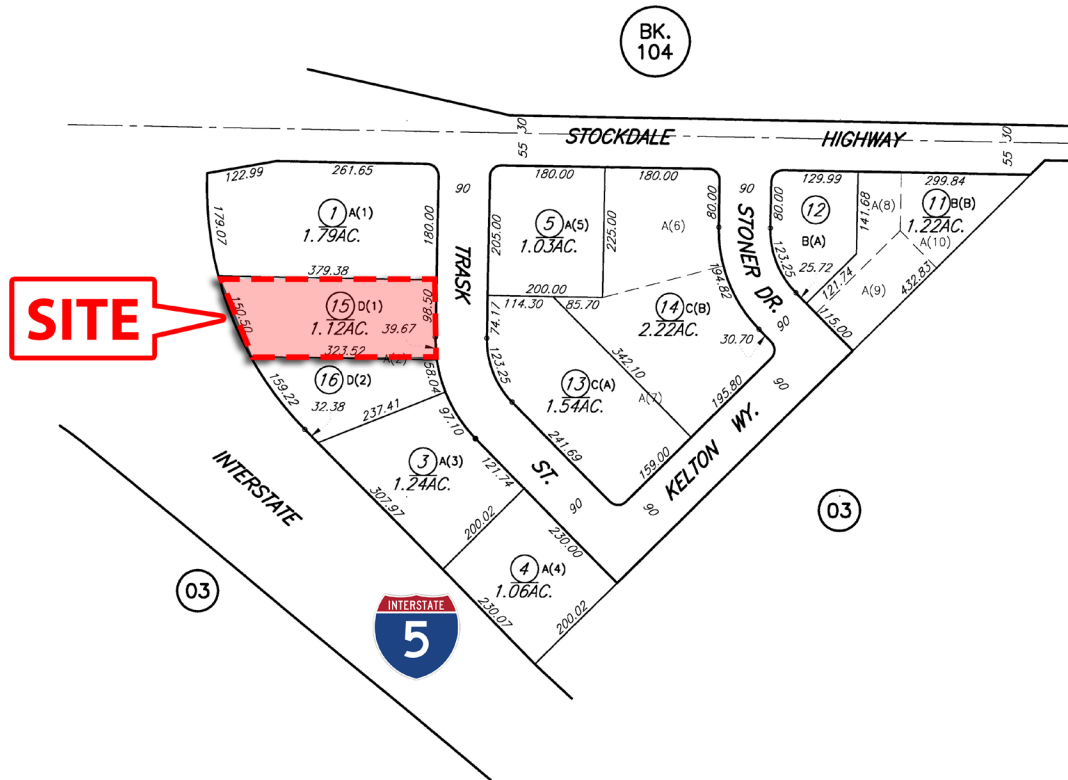


FOR SALE

Former Fast Food Drive-Thru Restaurant

PM 709
PTN. N1/2 SEC.6 T.30S. R.25E.

160-19



LEGEND	
DRAWN May 18, 2005	
JURISDICTION COUNTY	
SUBD. KEY	
REF.	SUBD.
A.	PM 709
B.	LLA 4-90
C.	PMW 1223
D.	PM 10039
(LOT DESIGNATIONS IN PARENTHESIS)	
DISCLAIMER	
This map is for assessment purposes only. It is not to be construed as portraying legal ownership or divisions of land for purposes of zoning or subdivision law.	

For more information, please contact:

Doug Cords

Direct Line: 559/650.1307

dcords@retailassociates.com

DRE License #01264420



All projections, opinions, assumptions or estimates are supplied for example only and may not represent current or future performance of the property. Any and all information pertaining to location, demographics and the site plan is supplied by sources believed to be reliable. We do not guarantee the accuracy of information and make no warranty or representation thereto. All information is presented herewith with the possibility of errors, omissions, change of price, rental or other conditions, prior sale, lease or financing, or withdrawal without notice. Commercial Retail Associates operates under the corporate Department of Real Estate License #01121565.

