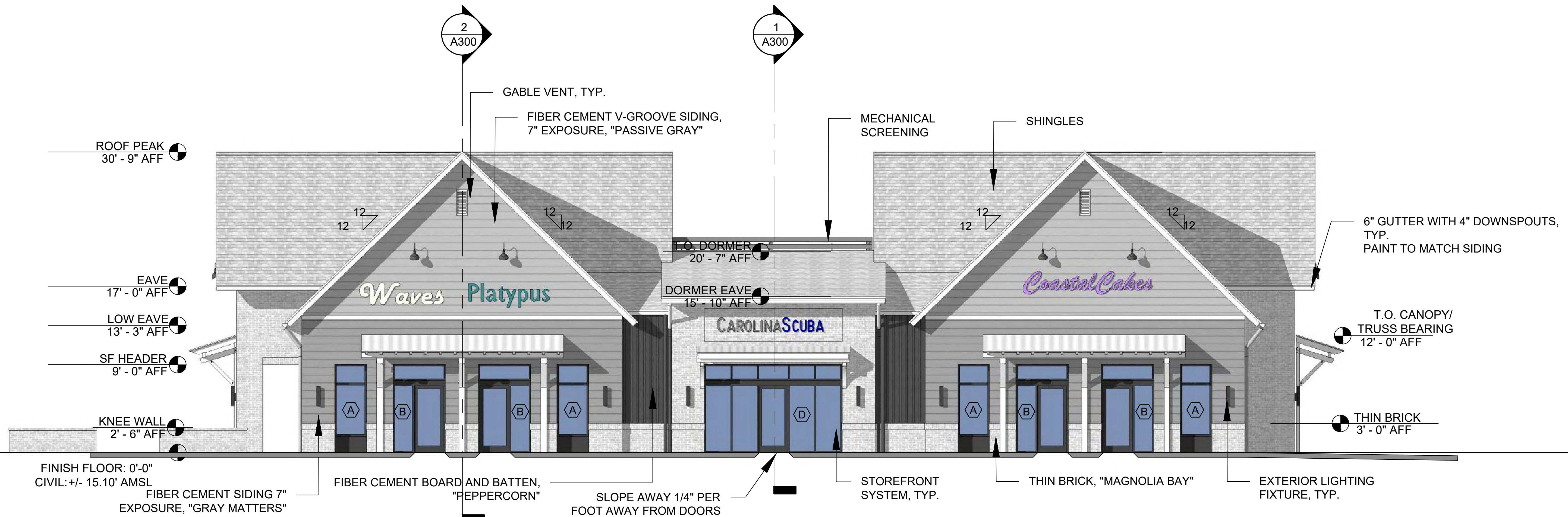


**LFK ARCHITECTS**  
 Land Planning + Feasibility Studies  
 Commercial + Residential Design  
 www.lfkarchitect.com  
 LFK ARCHITECTS, LLC  
 886 JOHNNIE DODDS BLVD  
 SUITE 200  
 MOUNT PLEASANT, SC 29464  
 LOSSE F. KNIGHT III, AIA  
 losse@lfkarchitect.com  
 phone: 843-330-8940

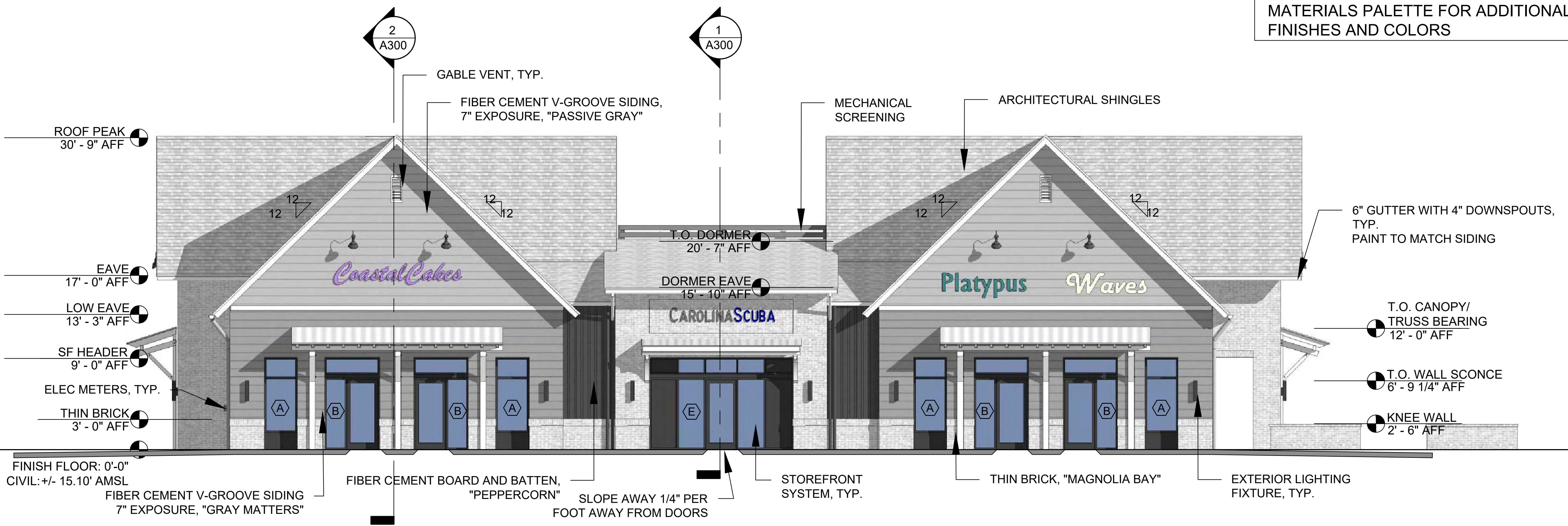
JOB NUMBER:	000
DRAWN:	AJR
CHECKED:	LFK



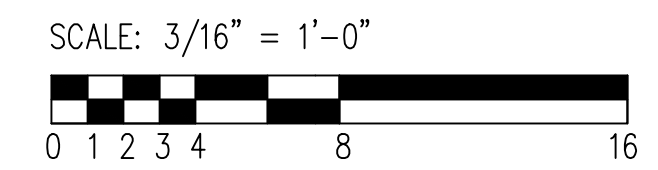
**1 NORTH ELEVATION (FRONT) FACING PARKING LOT AND BLDG "C"**  
 SCALE: 3/16" = 1'-0"

NOTE: SIGNAGE BY OTHERS

SEE TOMP FINAL DRB APPROVED EXTERIOR MATERIALS PALETTE FOR ADDITIONAL INFO ON FINISHES AND COLORS



**2 SOUTH ELEVATION FACING HWY 17**  
 SCALE: 3/16" = 1'-0"



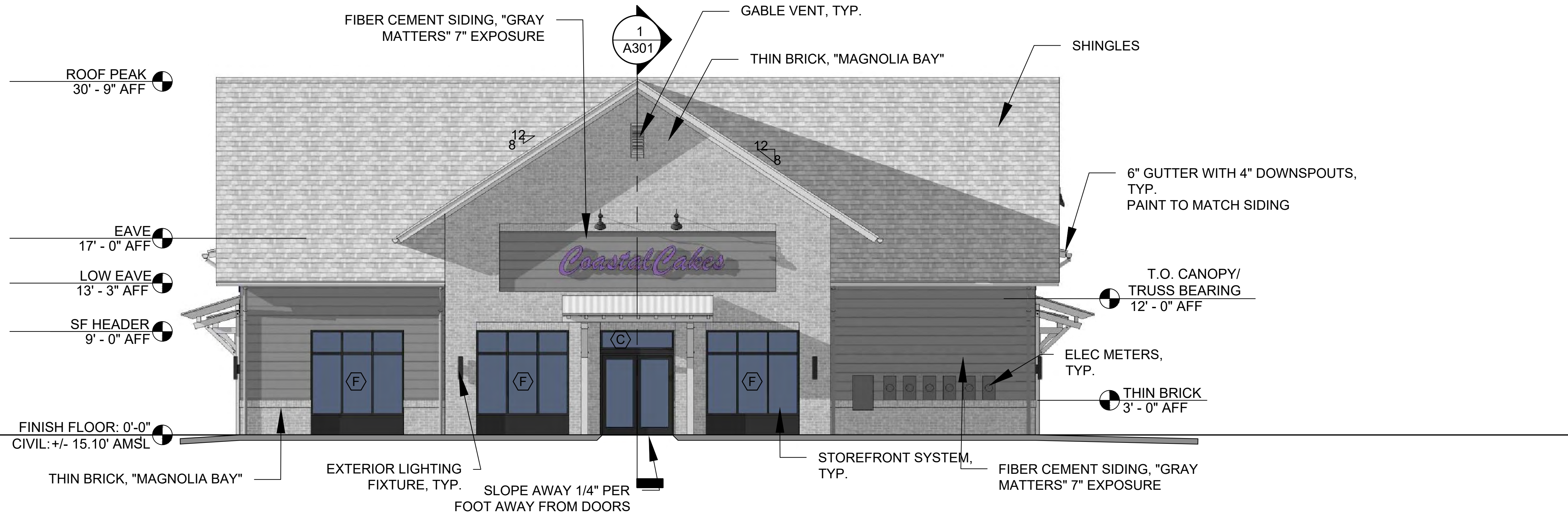
REVISION NOTES:

HIGHWAY 17 RETAIL VILLAGE BUILDING "A"  
 TMS#s 598-00-00-008, 598-00-00-010, 598-00-00-011  
 MOUNT PLEASANT, SC  
 NORTH AND SOUTH BUILDING ELEVATIONS

SHEET NUMBER & TITLE:

**A200**

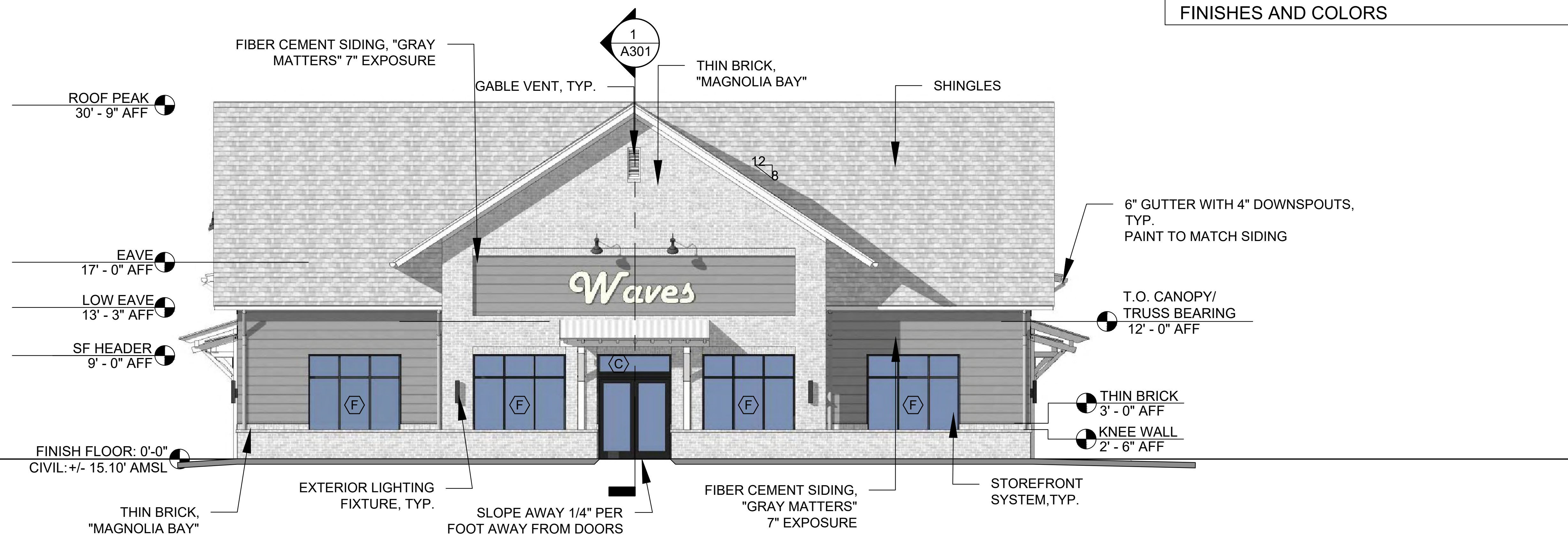
PERMIT/ CONSTRUCTION DRAWINGS  
 02.27.2026



**1 WEST ELEVATION- SIDE FACING PATIO AND PARKING LOT**  
SCALE: 3/16" = 1'-0"

NOTE: SIGNAGE BY OTHERS

SEE TOMP FINAL DRB APPROVED EXTERIOR MATERIALS PALETTE FOR ADDITIONAL INFO ON FINISHES AND COLORS



**2 EAST ELEVATION (SIDE) FACING ENTRY DRIVE AND BLDG "B"**  
SCALE: 3/16" = 1'-0"

