



314
RUTLEDGE
STREET

THE BEACON



The Beacon

State-of-the-art office building designed for the modern professional. Perfectly situated close to everything yet removed from the daily chaos, Beacon offers you the rare opportunity to own your office space in one of Brooklyn's most vibrant neighborhoods.

With thoughtful upgrades, premium finishes, and every detail crafted for comfort and efficiency, Beacon transforms the workday into a seamless, elevated experience.

Join the future of work. Welcome to your new beginning, welcome to Beacon.



The space you desire, without compromise

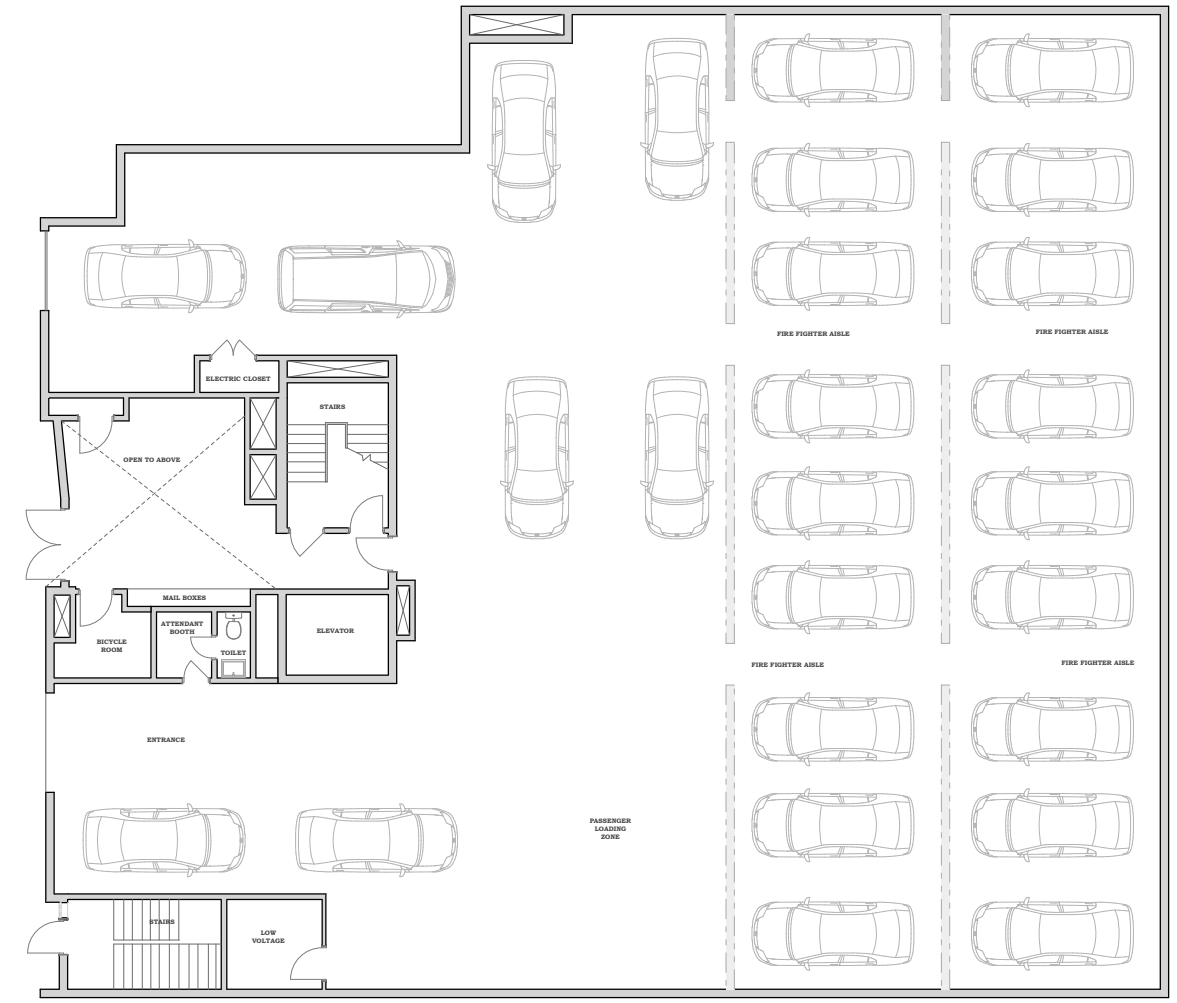
A high-end office building,
But not overwhelmingly big

Located in the neighborhood,
But away from the rush

Own your office space,
But no construction headaches

INDOOR PARKING

Your Spot, Always Ready
Indoor Parking for Sale!





11-foot ceilings for an open, expansive feel

Prime Williamsburg location, close to everything

Sophisticated lobby and elegantly designed common areas

Designer restrooms and boutique style lounges on every floor

Oversized windows providing abundant natural light

Fully customizable interiors to bring your vision to life

WHAT'S AT THE BEACON?

ROOF TOP

Designer-furnished rooftop offering a refreshing outdoor experience with stunning city views



CLOSE TO EVERYTHING, AWAY FROM THE CHAOS.

While much of Williamsburg buzzes with energy and traffic, Beacon offers a rare advantage. Strategically positioned on Rutledge Street, between Harrison Avenue and Broadway, Beacon places you at the center of it all, yet removed from the daily congestion.

Here, you're perfectly connected to the best of Brooklyn, while enjoying a calmer, more refined setting that lets you work and thrive without the chaos.



PRIME AREA

Beacon offers the perfect blend, close to everything, without the congestion. Positioned in the perfect area, it provides unbeatable access while keeping your workday stress-free.



Surrounded by Kosher restaurants and cafés



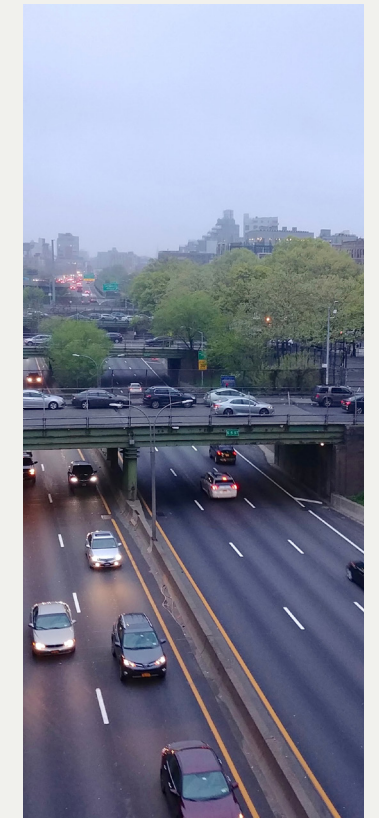
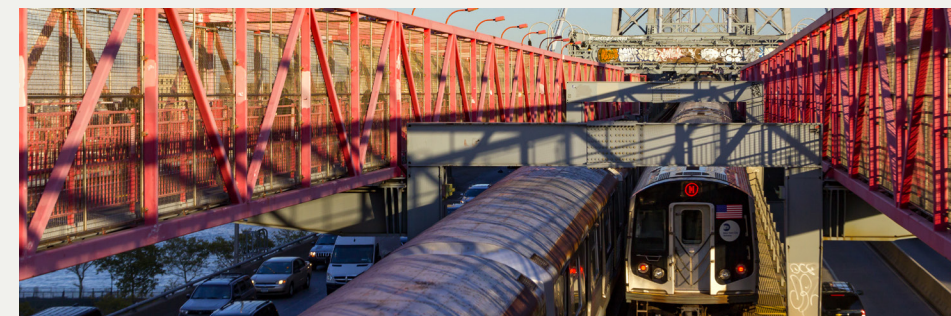
Next to many Shuls



Prime Location But No traffic in the area

WORK SMARTER. ARRIVE FASTER.

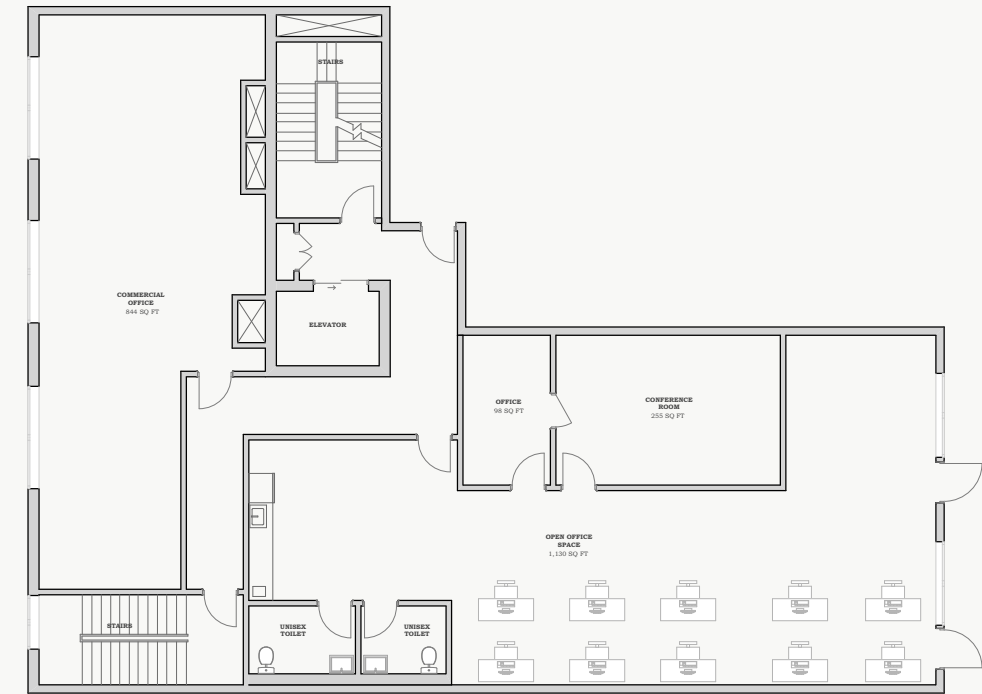
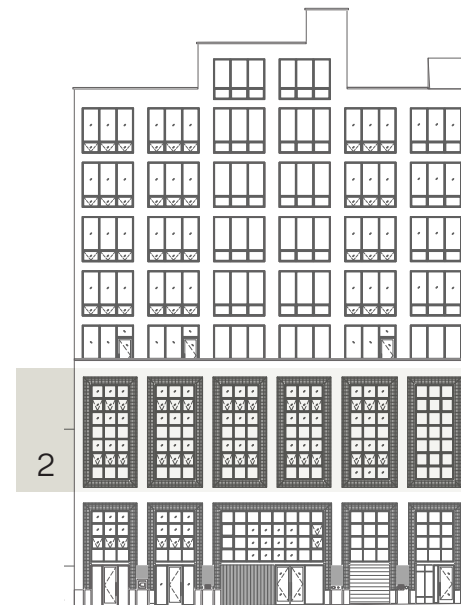
Beacon puts you right next to the subway and just three minutes from the Williamsburg Bridge and BQE, making commutes, meetings, and citywide access unbelievably easy.



SECOND FLOOR

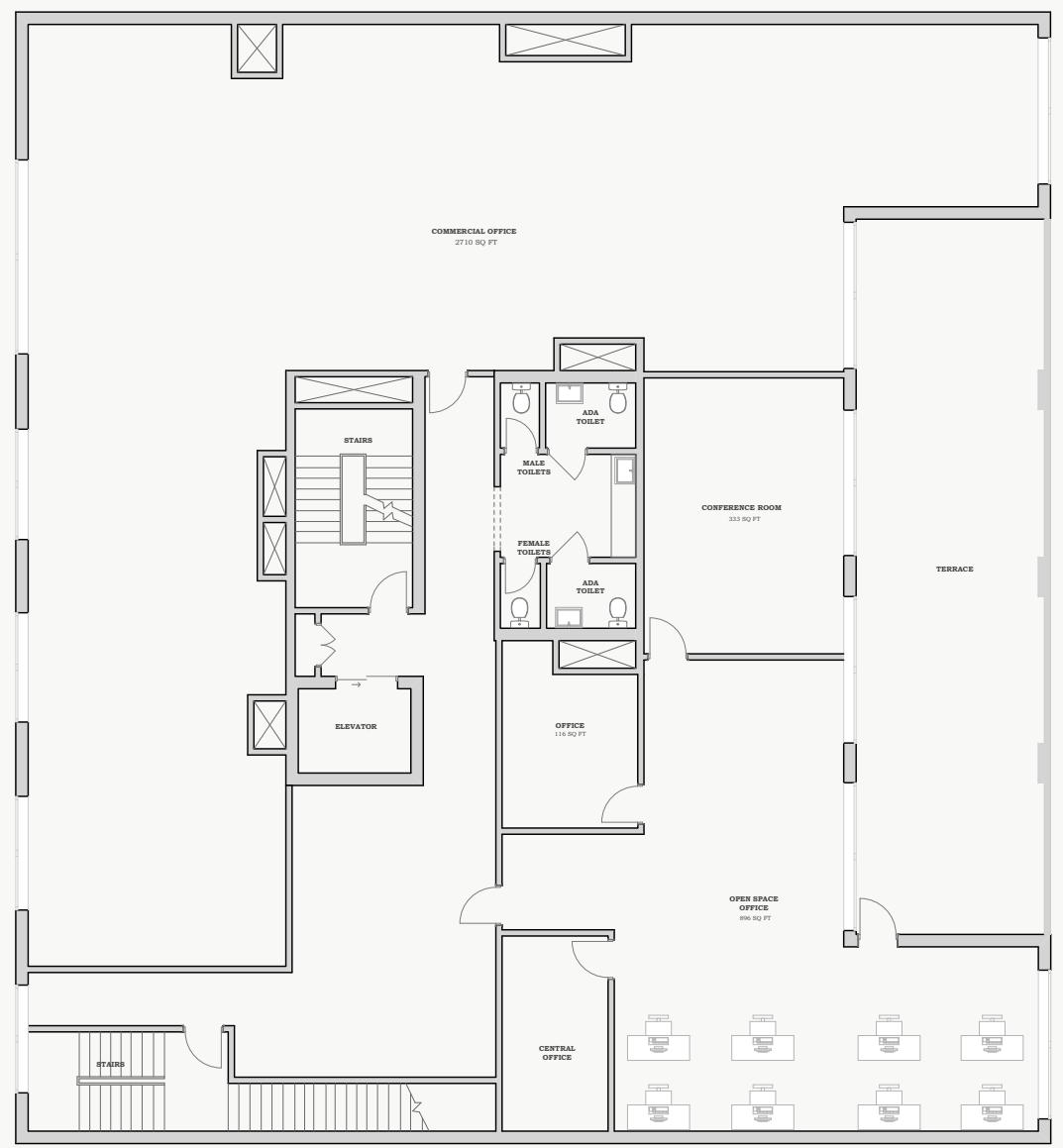
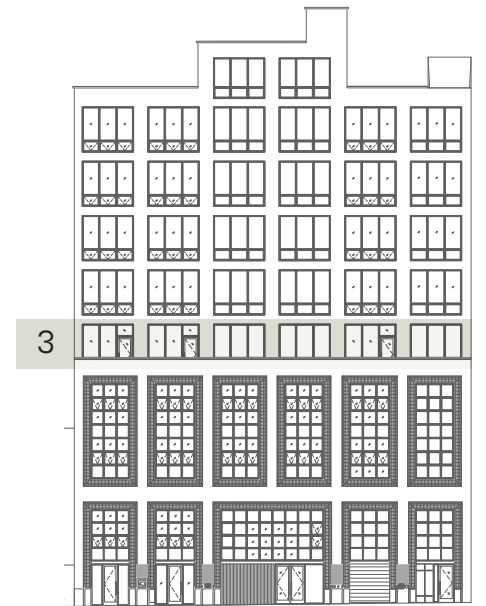


Total Available Space
7,013 SF



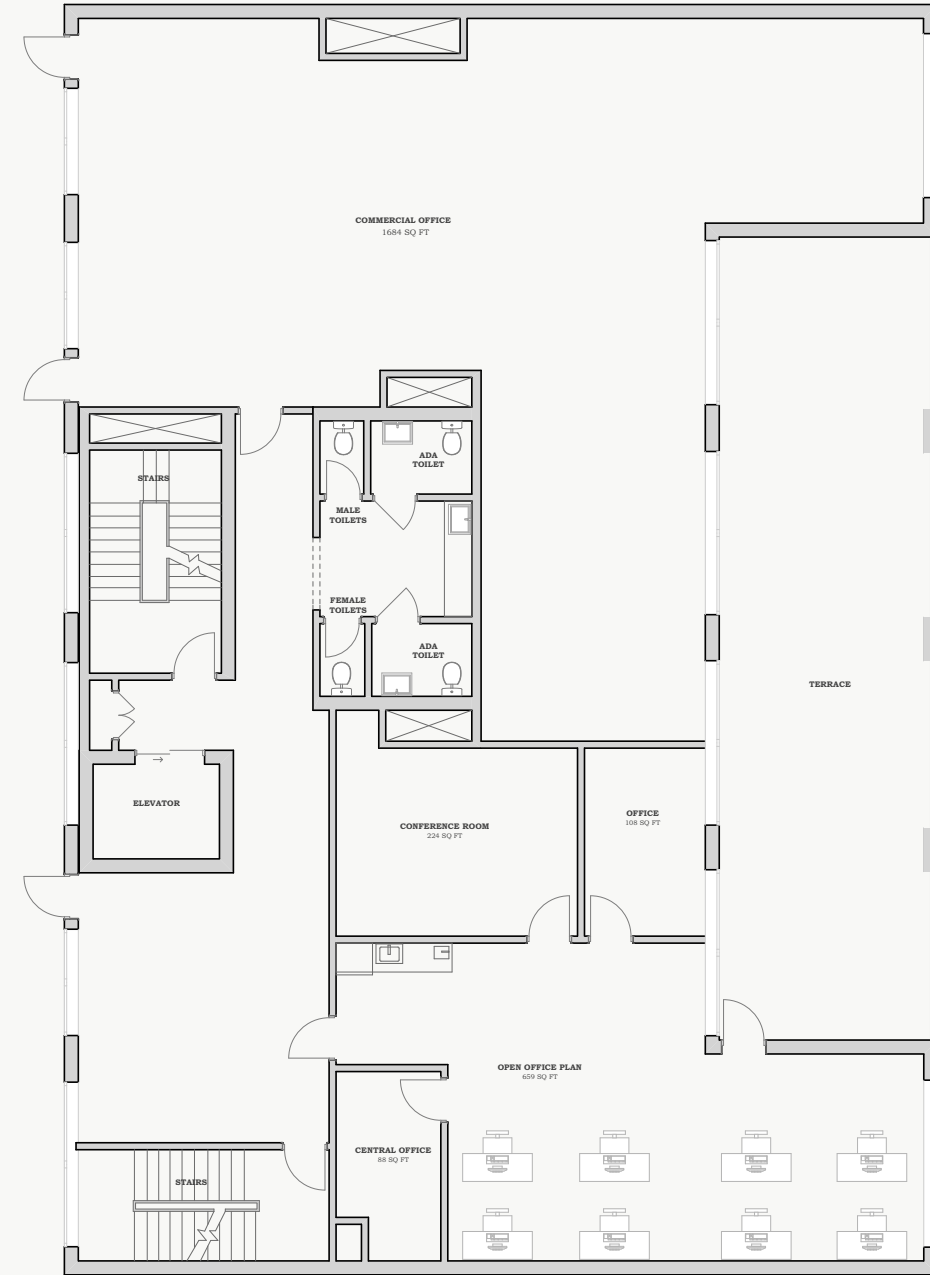
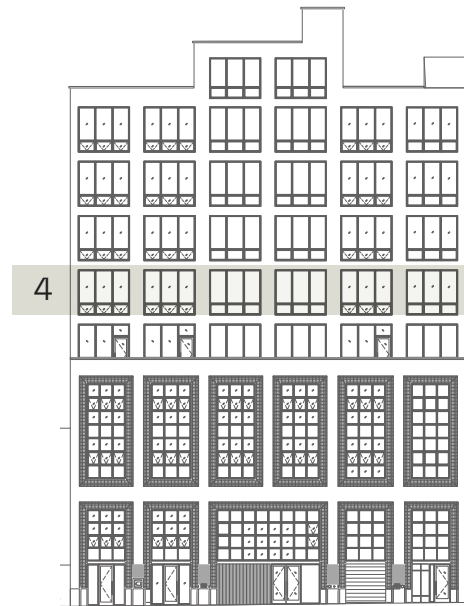
THIRD FLOOR

Total Available Space
7,013 SF



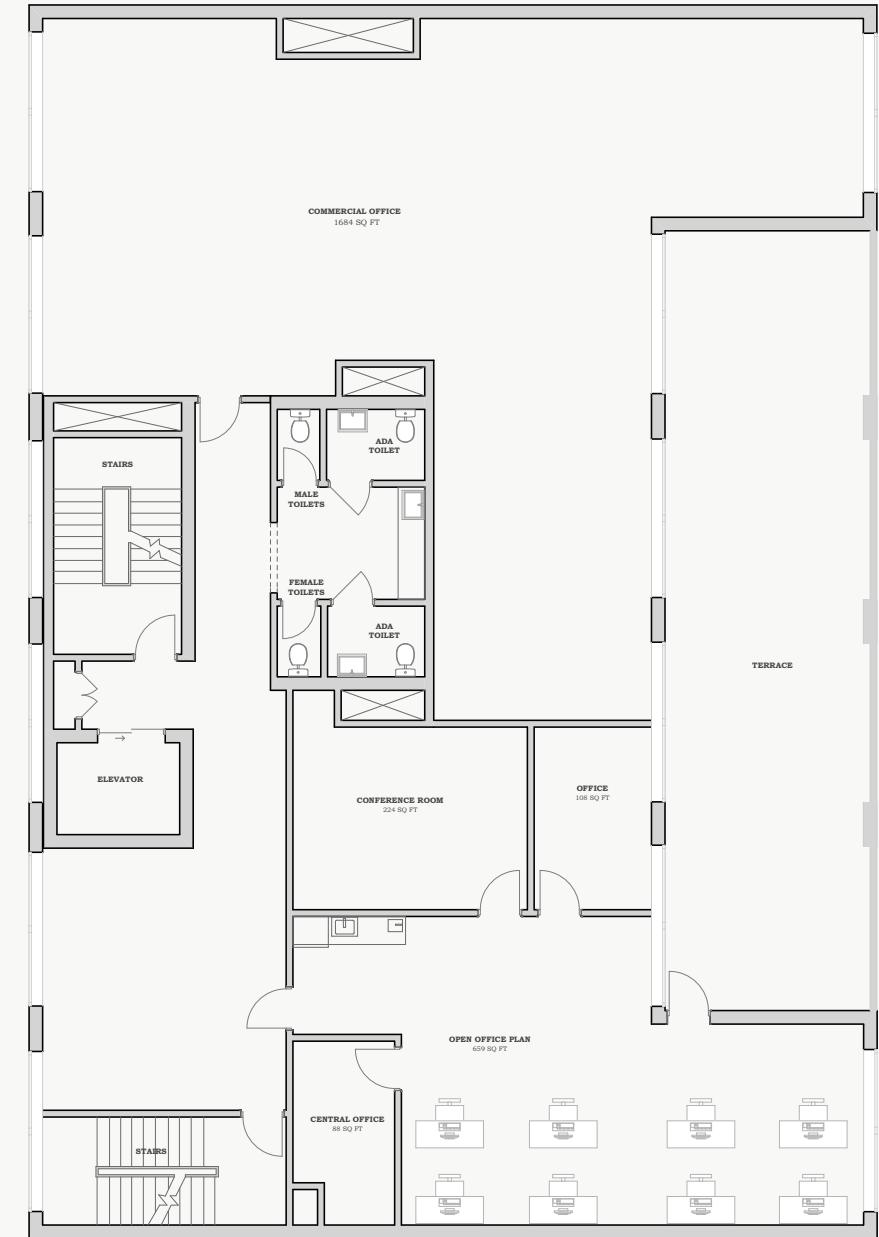
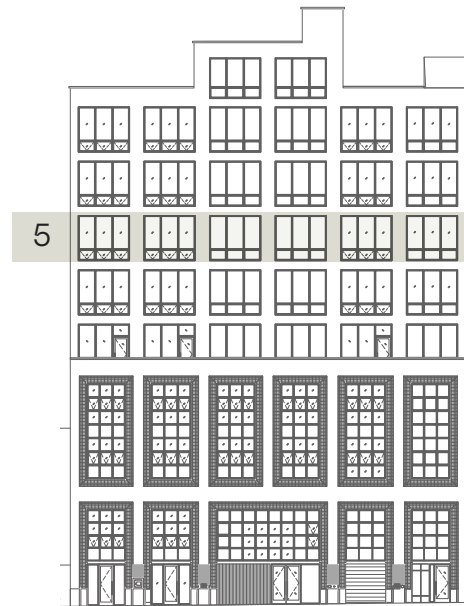
FOURTH FLOOR

Total Available Space
6,908 SF



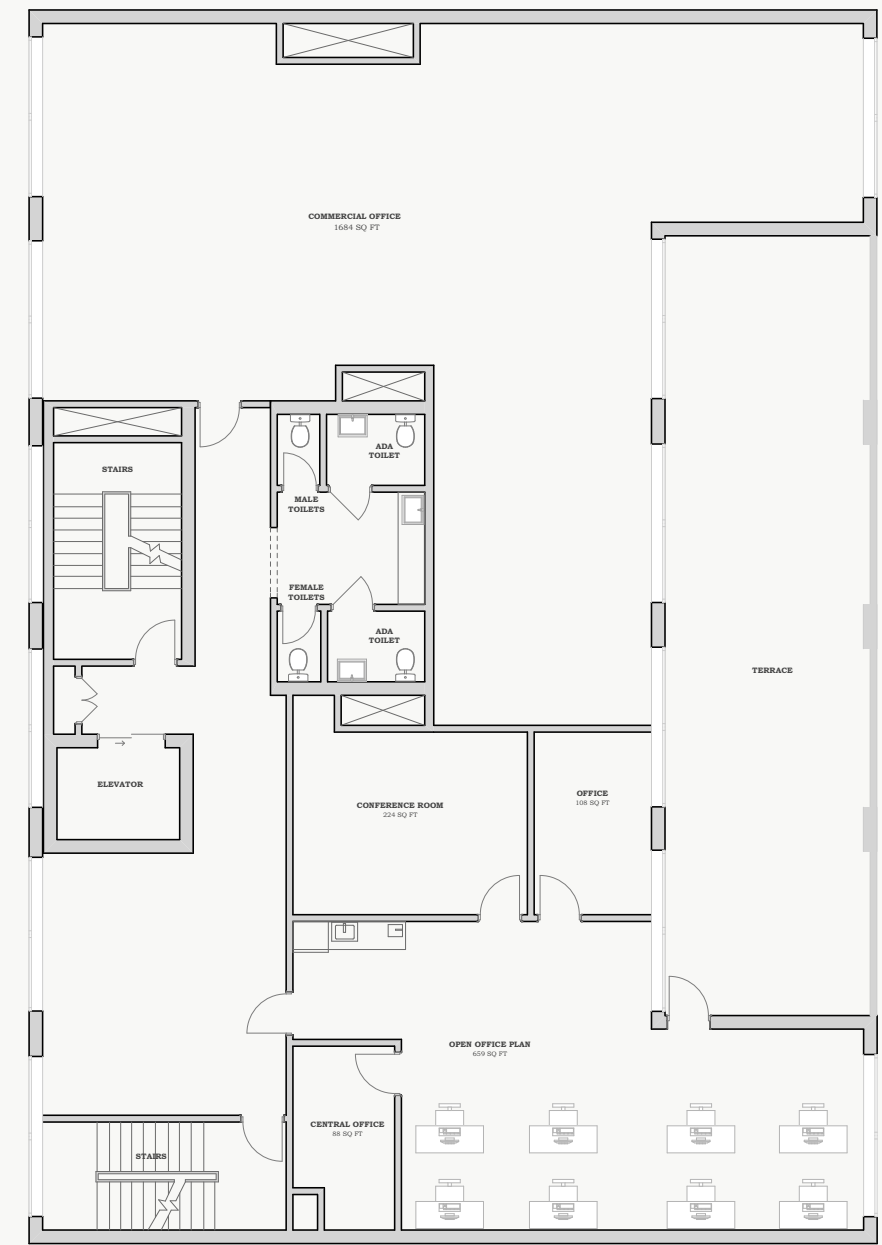
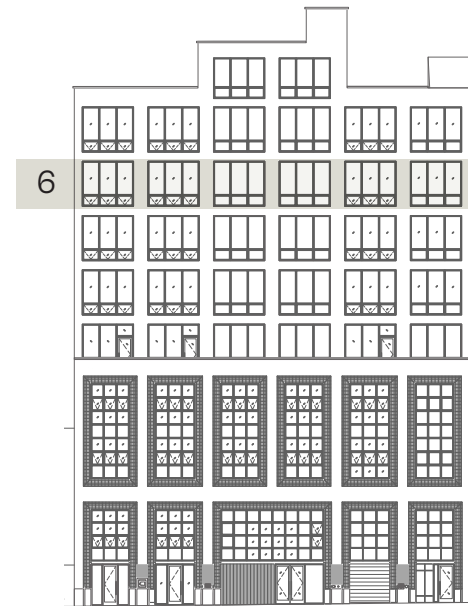
FIFTH FLOOR

Total Available Space
5,260 SF



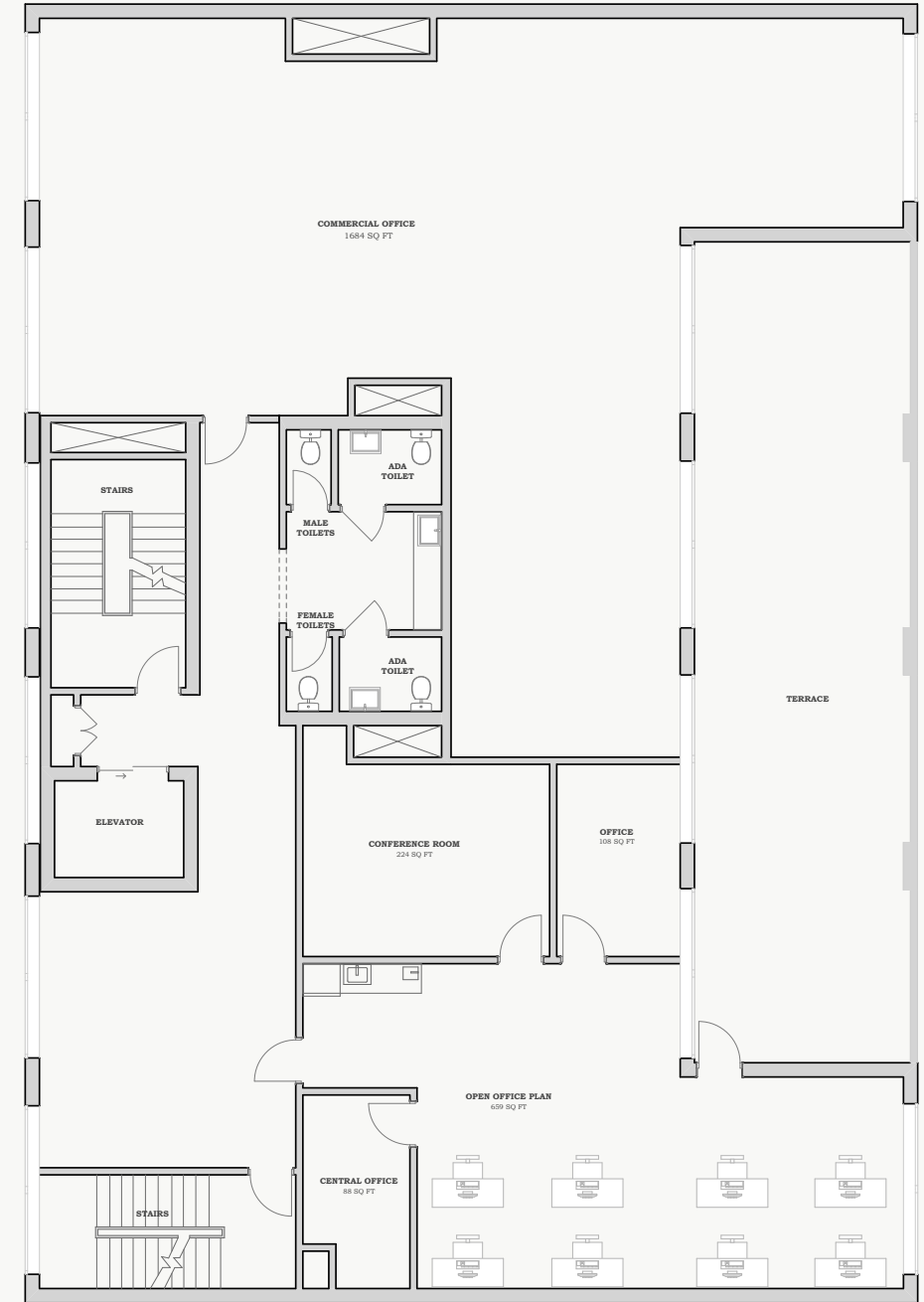
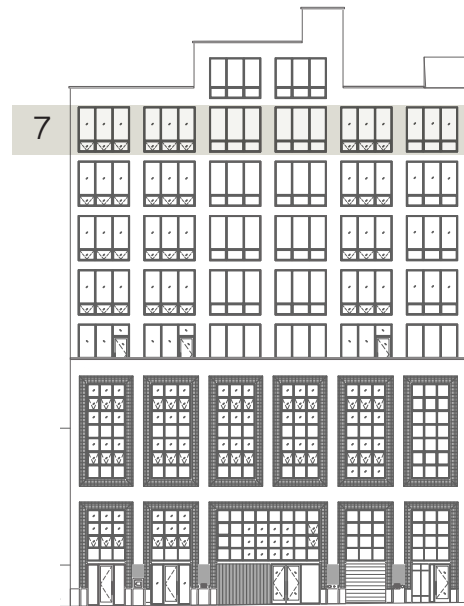
SIXTH FLOOR

Total Available Space
5,260 SF



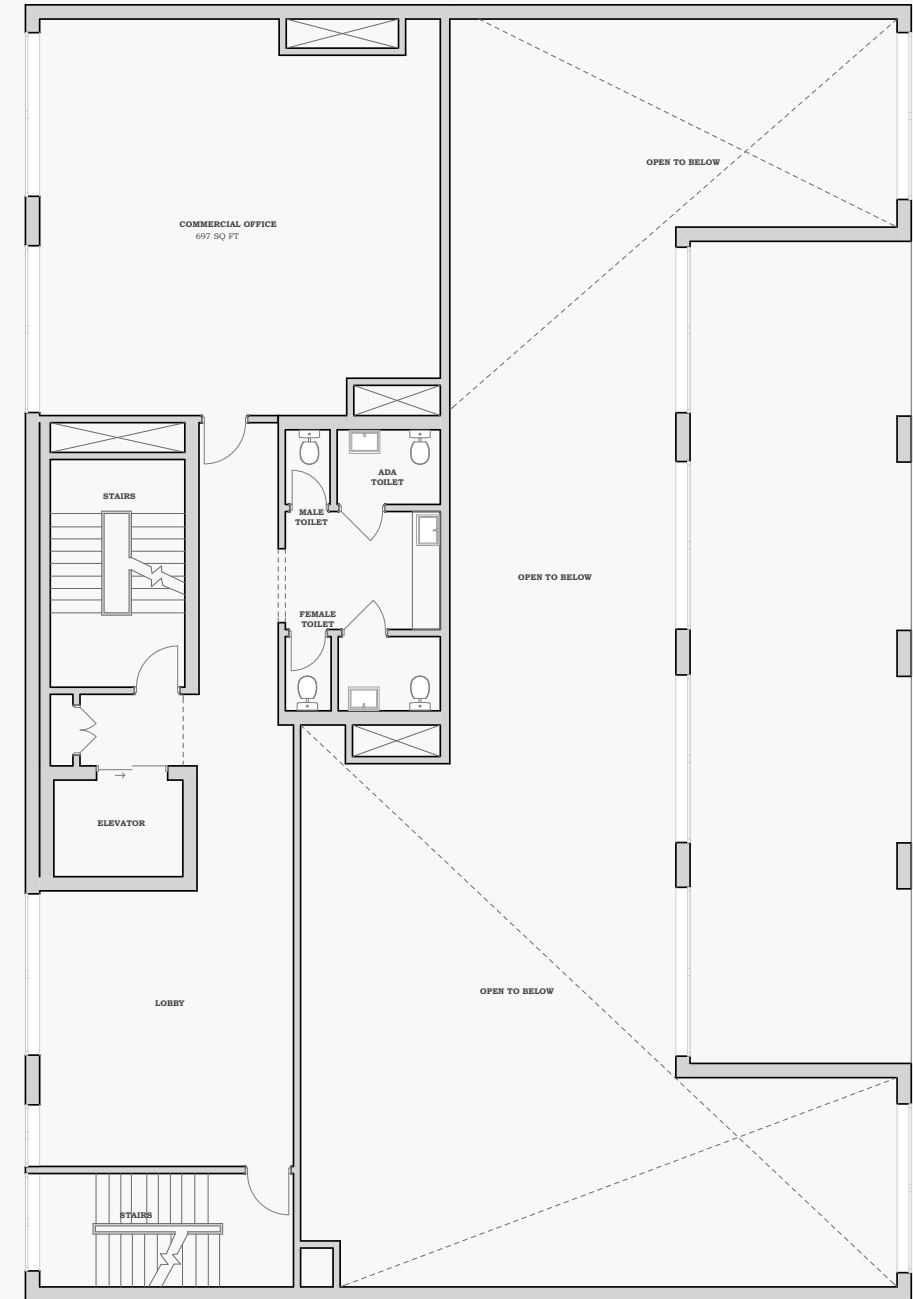
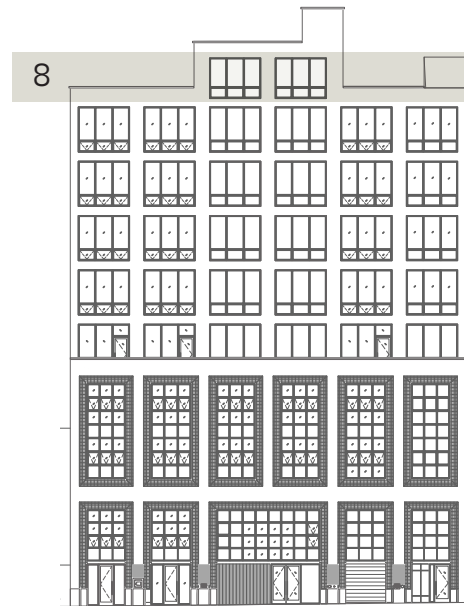
SEVENTH FLOOR

Total Available Space
5,210 SF



EIGHTH FLOOR

Total Available Space
5,942 SF





QITZ

REALTY USA

BY CHAIM REICH

Licensed Real Estate Agent

Secure your spot, inquire today

eRealty Advisors USA Inc.

718.781.3616