

217

B Street

San Mateo, CA 94014

TCN
WORLDWIDE
REAL ESTATE SERVICES

FOR Lease

\$3.85 /SQFT

Frank Vella
frank@starboardcre.com
650.464.8062



STARBOARD CRE
LOCAL • INDEPENDENT • ENTREPRENEURIAL

SUMMARY

Building Address: 217 B Street

Rate: \$3.85 /SQFT

Space Type: Office

Listing Type: For Lease

Space: 2nd Floor

Spaces

8 **Suite 1**
±565 SF

7 **Suite 2**
±387 SF

4 **Suite 3**
±906 SF

3 **Suite 4**
±661 SF



Downtown San Mateo

Prime central location



Second Floor Office

Quiet elevated workspace



Natural Light Filled

Bright productive interiors



Open Layout Space

Flexible team environment



Modern Office Comfort

Efficient daily workflow



Team Friendly Space

Supports collaboration flow



Clean Professional Setting

Polished business environment



Competitive Lease Rate

\$3.85 per square foot



IMAGES



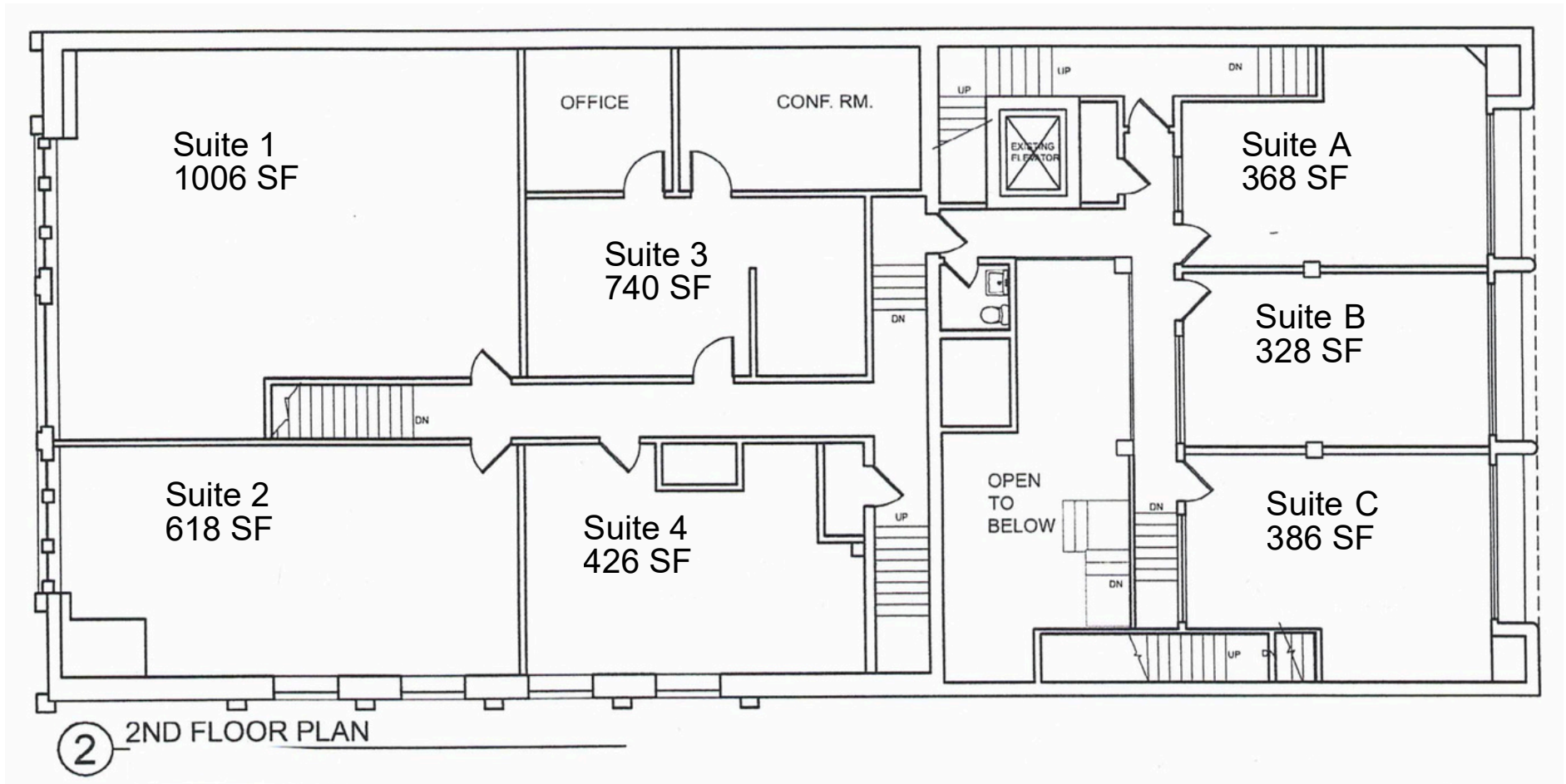
IMAGES



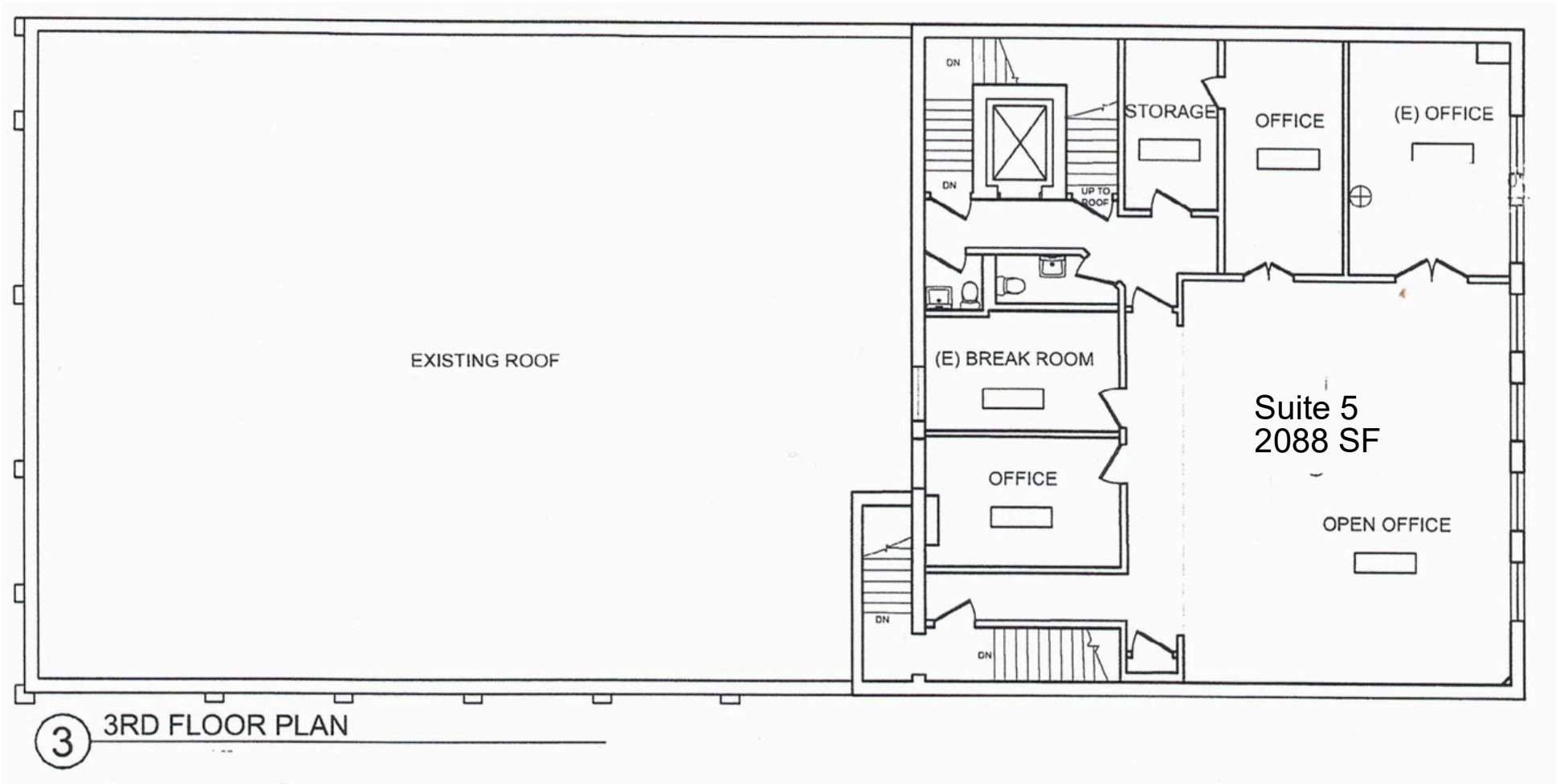
IMAGES



2ND FLOOR PLAN



3RD FLOOR PLAN



ARIAL



TEAM



Frank Vella

Broker Associate

frank@starboardcre.com

CELL: 650.464.8062

CA DRE # 01104977

Call

View Profile



STARBOARD CRE
LOCAL • INDEPENDENT • ENTREPRENEURIAL



STARBOARD CRE
LOCAL • INDEPENDENT • ENTREPRENEURIAL

STARBOARDCRE.COM
OFC. PHONE 415.765.6900
49 POWELL STREET, SAN FRANCISCO, CA 94102



Unique Vision

We see what others miss

Local Market Leader

No one knows Northern
California like we do

Full-Service Firm

We do it all

Locally based, and technology-forward, our brokers are highly qualified experts backed by a full-service, in-house support team who understand the intricacies of San Francisco real estate. Starboard CRE brings decades of brokerage experience representing over 600 million square feet of space with an aggregate lease value of over 10 billion and investments sold over 3 billion.

CA DRE# 01103056

