

FOR LEASE



1400 CRESCENT GREEN

Cary, NC 27518



CAPITAL
ASSOCIATES®

1400 CRESCENT GREEN

Cary, NC 27518

PROPERTY TYPE	Office
BUILDING SIZE	50,069 SF
SPACE AVAILABLE	
SUITE 212	2,381 SF
SUITE 320	3,107 SF
LEASE TYPE	Full Service
YEAR BUILT	2000
COUNTY	Wake
LOCATION	Cary, NC
FLOORS	4
PARKING	3.5/1,000 SF



BRET MULLER
919.523.4200
bmuller@capitalassociates.com

WES JOHNSON
919.422.4853
wjohnson@capitalassociates.com



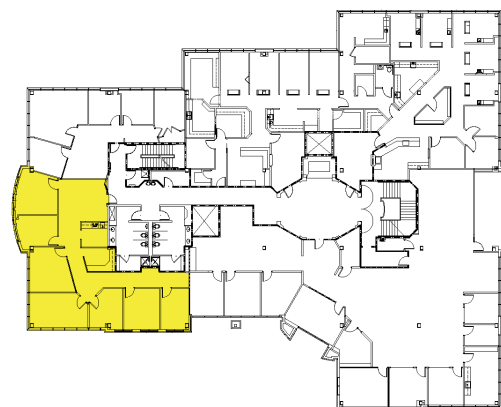
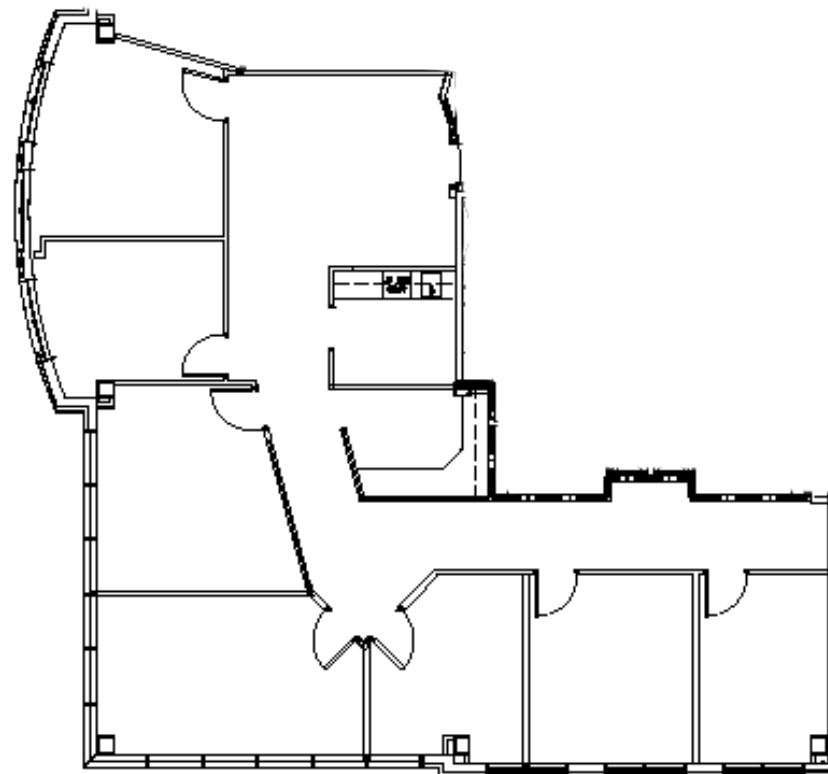
1400 CRESCENT GREEN

Cary, NC 27518

AVAILABLE

Second Floor
Suite 212

2,381 SF



BRET MULLER

919.523.4200

bmuller@capitalassociates.com

WES JOHNSON

919.422.4853

wjohnson@capitalassociates.com



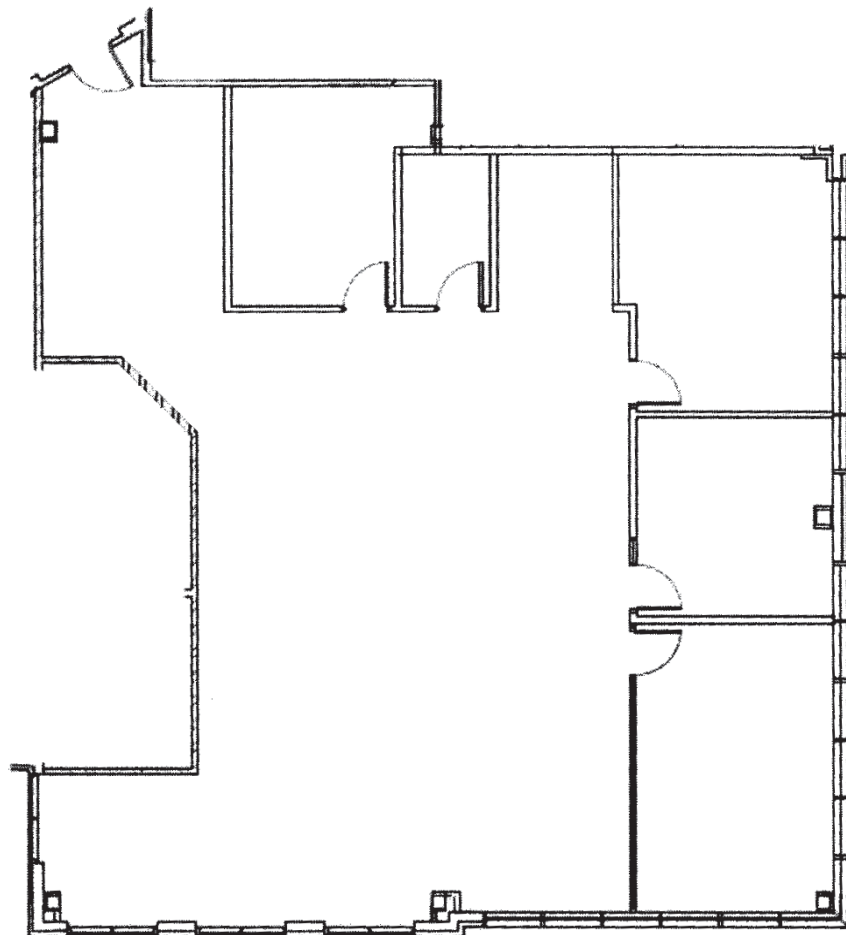
1400 CRESCENT GREEN

Cary, NC 27518

AVAILABLE

Second Floor
Suite 320

3,107 SF



BRET MULLER

919.523.4200

bmuller@capitalassociates.com

WES JOHNSON

919.422.4853

wjohnson@capitalassociates.com





POINTS OF INTEREST

DINING

- Chick-Fil-A
- Whole Foods
- Burger King
- Subway
- Tropical Smoothie Cafe
- Shake Shack
- Lucky 32 Southern Kitchen
- Pizza Hut
- Starbucks
- Chicken Salad Chick

CONVENIENCE

- Lifetime Fitness
- Harris Teeter
- Wal-Mart
- Walgreens

BANKING

- Bank of America
- Wells Fargo
- PNC Bank
- Chase Bank



1400 CRESCENT GREEN

1400 CRESCENT GREEN

Cary, NC 27518

PROPERTY HIGHLIGHTS

- Sun filled multi-story building with professional tenant mix
- Part of the beautiful Crescent Green business park with multiple buildings and professional landscaping

LOCATION

- Central location with easy access to US-1 & Hwy 64
- Minutes to I-40 and I-540
- Walking distance to local amenities as well as Crescent Commons and Waverly Place Shopping Centers

BRET MULLER

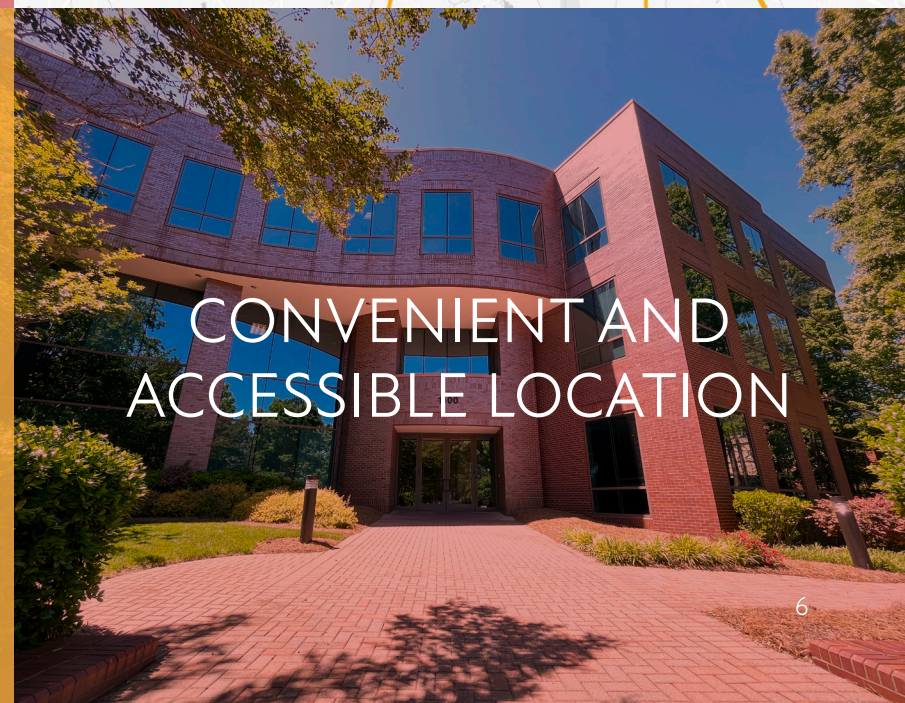
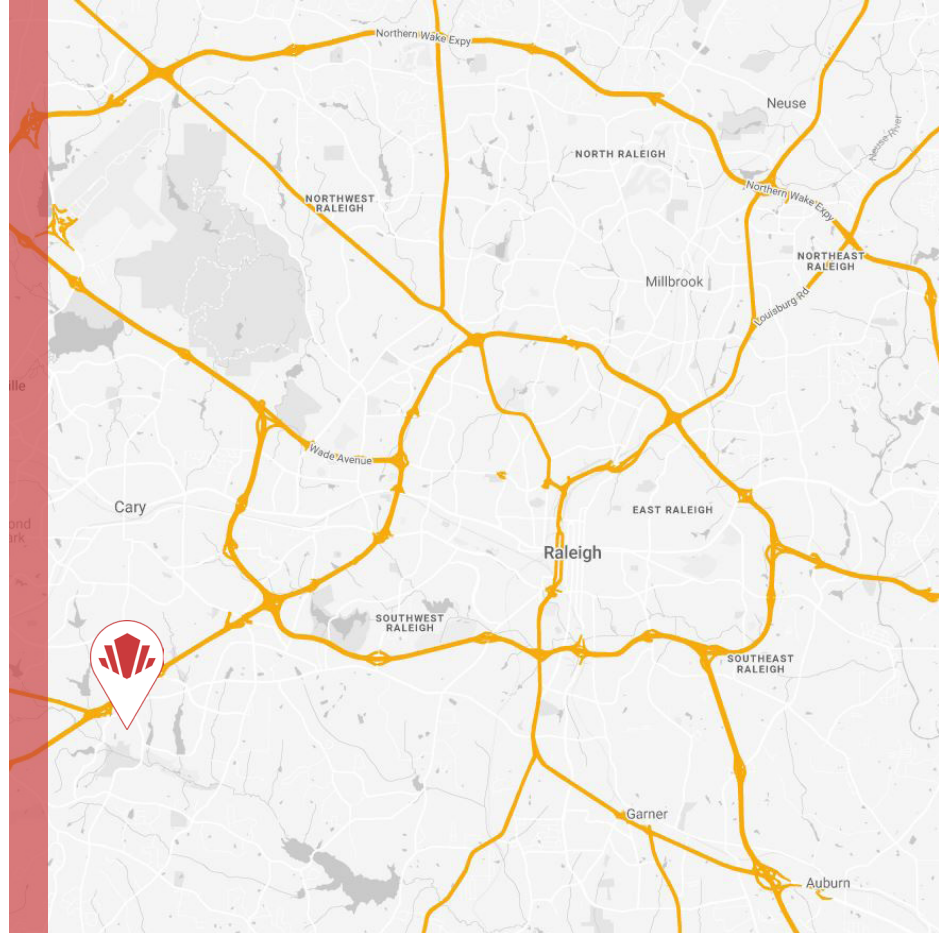
919.523.4200

bmuller@capitalassociates.com

WES JOHNSON

919.422.4853

wjohnson@capitalassociates.com





PARKING

148 Parking Spaces

3.5/1,000 SF

