

FLEX WORK SPACE

BUILDING 6 / BOISE, ID 83704



**PRIME
OFFICE/FLEX
SPACE FOR
SUBLEASE!**

KEKAULA KANIHO
208.947.0853
kekaula@tokcommercial.com

MIKE ARNOLD
208.957.5609
mikea@tokcommercial.com

NICK SCHUITEMAKER, CCIM
208.947.0802
nick@tokcommercial.com

CHRIS PEARSON, SIOR
208.947.0859
chris@tokcommercial.com

- Fiber internet available
- Professionally managed and maintained.
- Great office and flex spaces for smaller users.
- Diverse tenant mix in a 6 building commercial park.
- Located near Saint Alphonsus Regional Medical Center with convenient access to I-184 Connector.

SPACE:	SIZE:	RATE:
Bldg 6 Ste. 6141	2,026 SF	\$2,655/month

BLDG TYPE	Office/Flex
QUALITY	Class B
BLDGS	6 total
SUBLEASE TERM	Through 9/30/2028
LEASE TYPE	NNN*

**NNN's included in monthly rent*

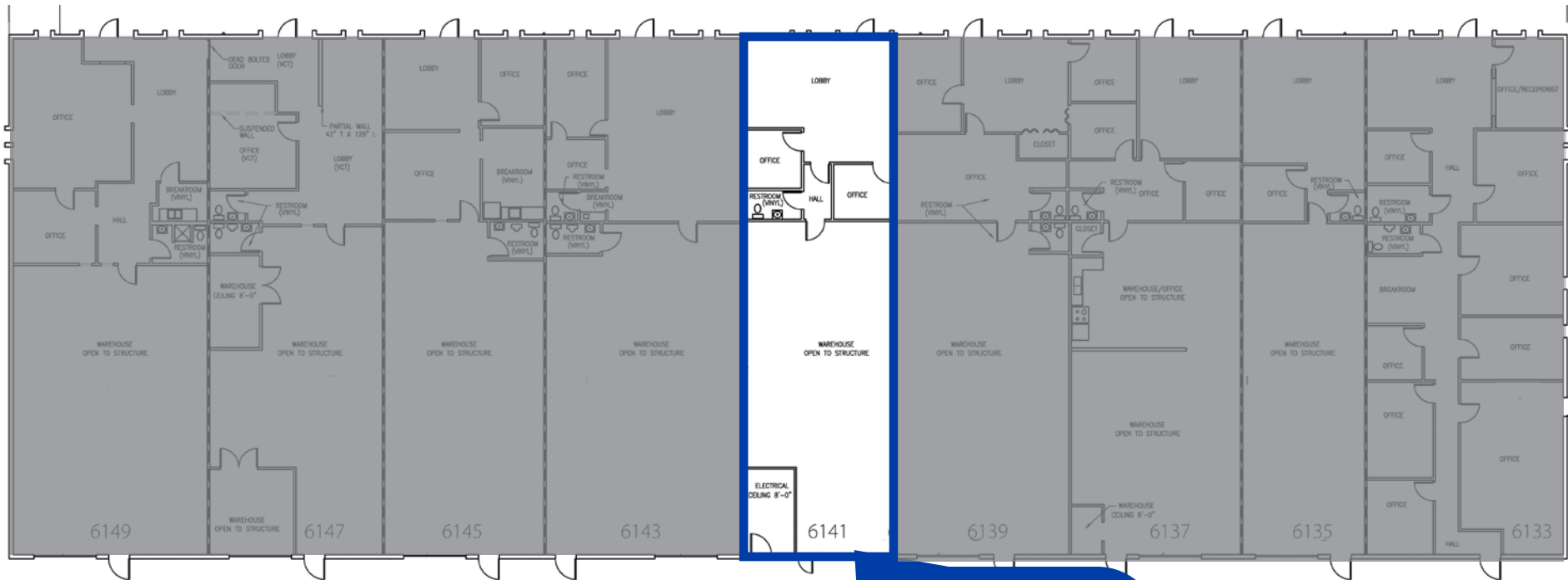
CONTACT

HIGHLIGHTS

DETAILS

FLOOR PLAN

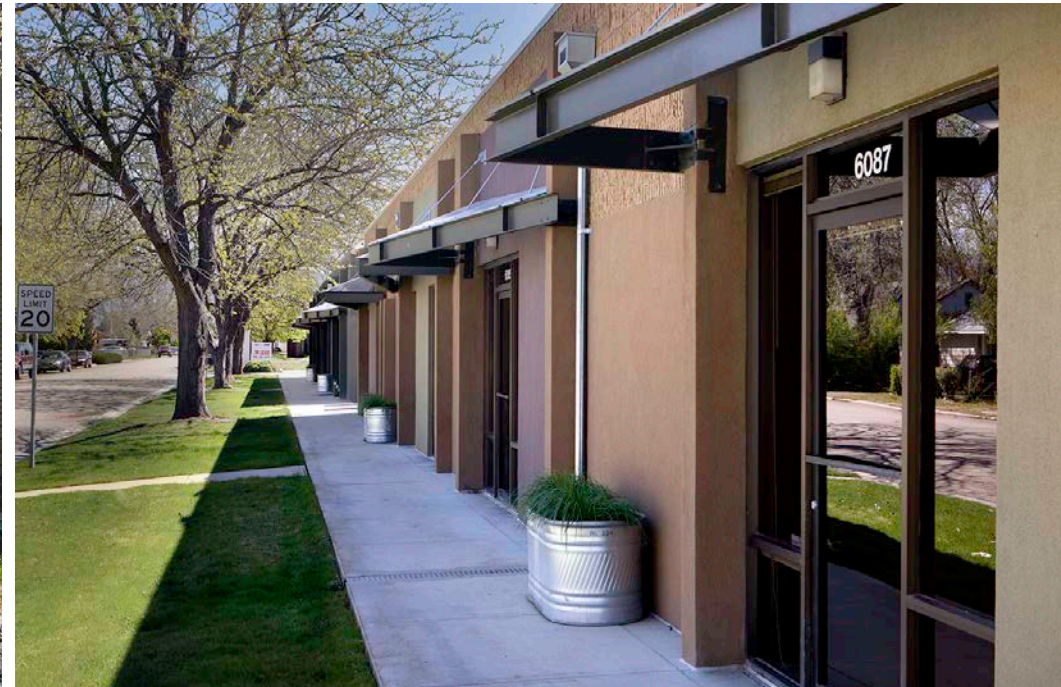
BLDG 6 / 6133 W CORPORAL LANE



STE 6141
2,026 SF
\$2,655/MONTH

TOK
COMMERCIAL

**FlexWork
Space**

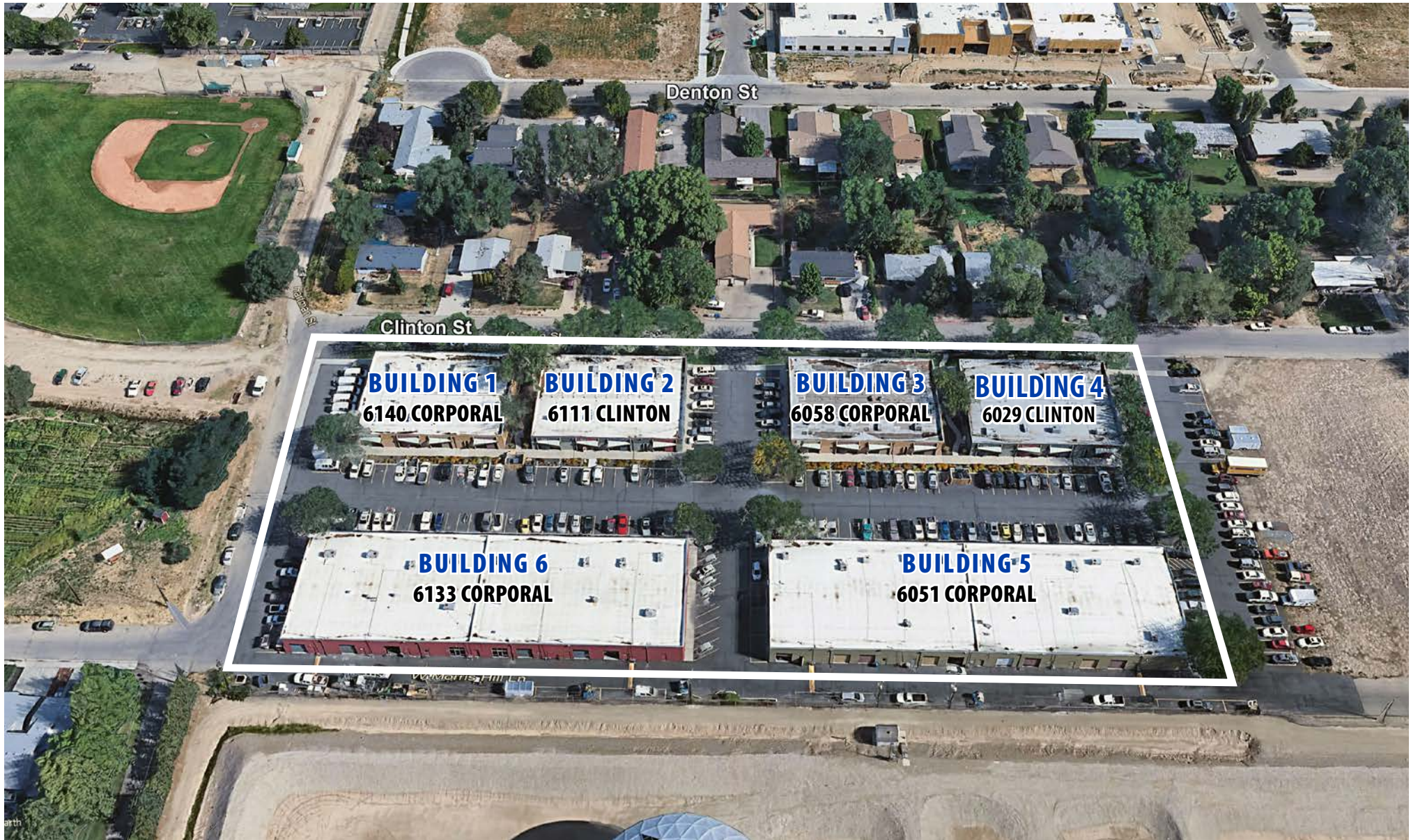


UPDATED: 4.16.2026

THIS PROPERTY IS EXCLUSIVELY MARKETED BY TOK BOISE LLC DBA TOK COMMERCIAL. This information was obtained from sources believed reliable but cannot be guaranteed. Any opinions or estimates are used for example only.

TOKCOMMERCIAL.COM

AERIAL



UPDATED: 4.16.2026

THIS PROPERTY IS EXCLUSIVELY MARKETED BY TOK BOISE LLC DBA TOK COMMERCIAL. This information was obtained from sources believed reliable but cannot be guaranteed. Any opinions or estimates are used for example only.

TOKCOMMERCIAL.COM