

LIGHT INDUSTRIAL UNIT

FOR
LEASE

28 STEVE FONYO DRIVE - UNITS 1 & 2



Highlights

- Close proximity to Highway 401 at Sir John A. MacDonald Boulevard
- Two Drive-in Doors: 10 ft wide by 12 ft high
- 16 ft ceiling height in warehouse

**Rogers
& Trainor**
Commercial Realty Inc.
Brokerage
rtcr.com

JAMES WARD
Broker Principal

✉ jward@rtcr.com

☎ 613-893-3335

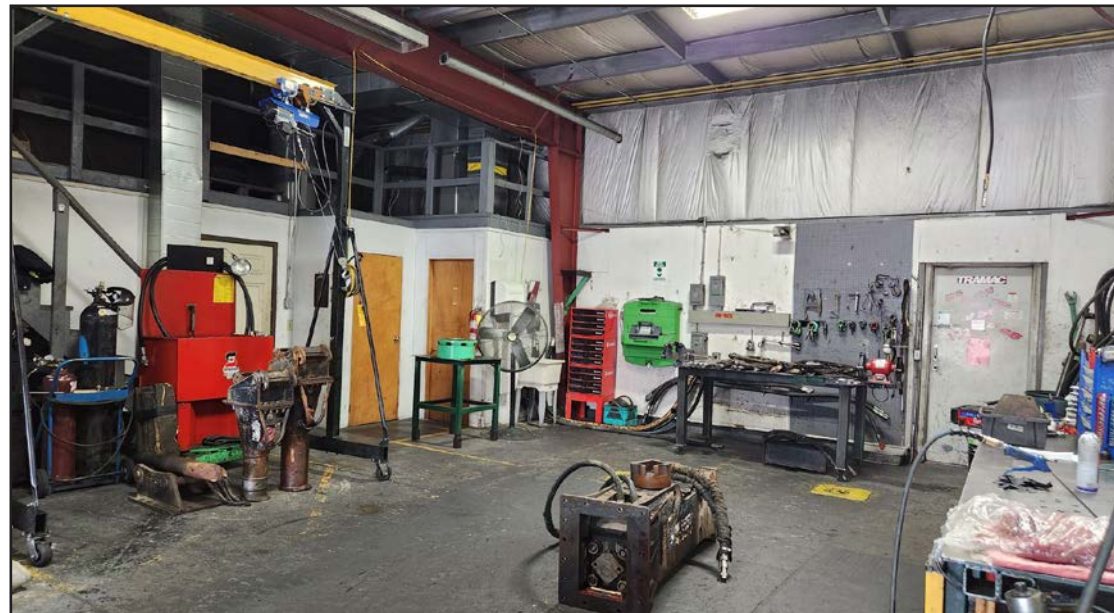
☎ 613-384-1997 ext. 25

📍 20 Gore Street, Suite 102
Kingston, Ontario K7L 2L1

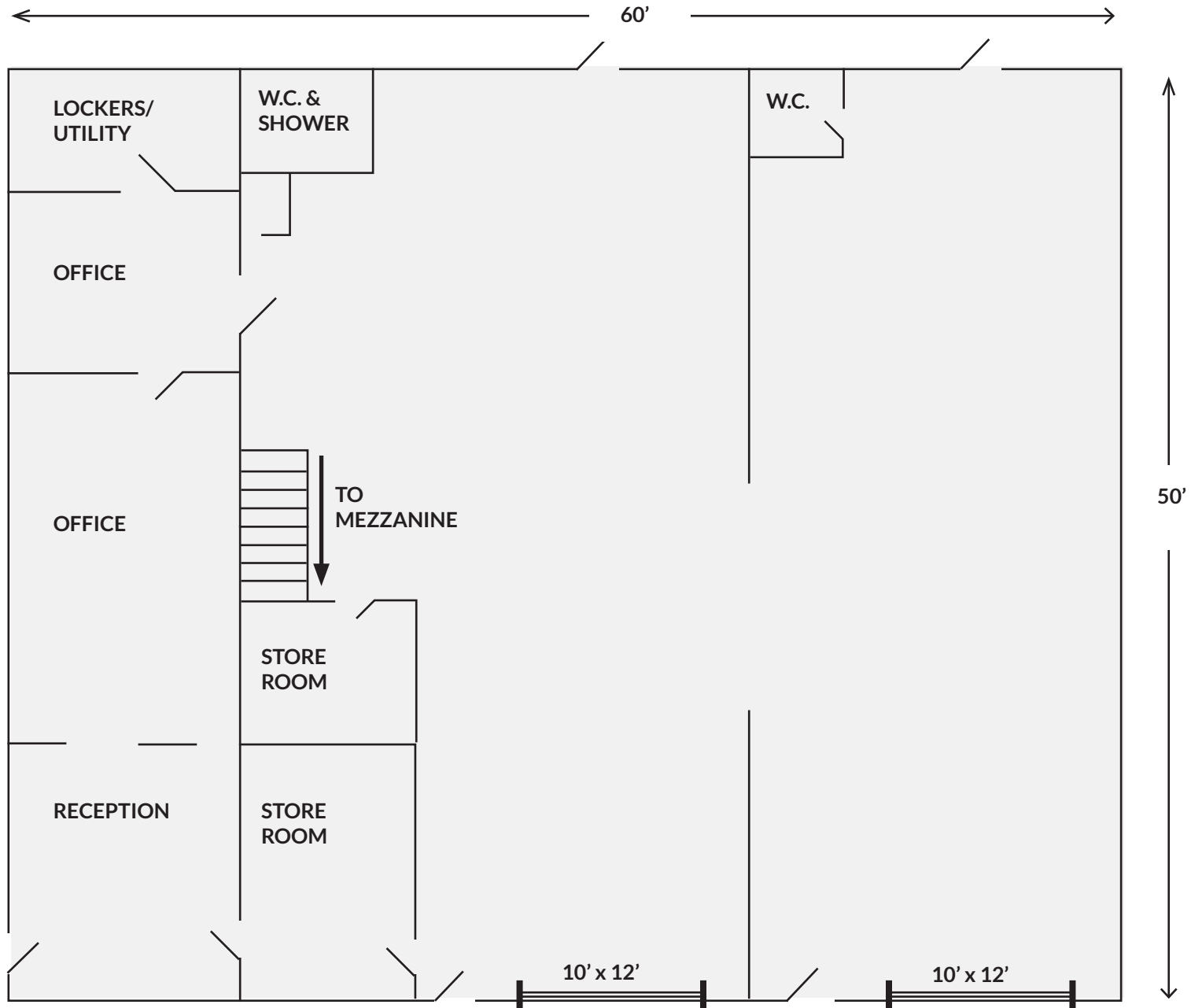
All information provided is deemed reliable but is not guaranteed and should be independently verified.

DETAILS & INTERIOR PHOTOS

- Rentable Area:** 3000 Sq Ft
(plus mezzanine storage area)
- Offices:** Approx. 800 sq ft
- Warehouse:** Approx. 2,200 sq ft
- Base Rent:** \$12.00 psf
- Additional Rent:** \$4.60 per sq ft pa
- Electrical Service:** 200 amp
- Doors:** Two grade level drive in doors (10 ft wide x 12 ft high)
- Parking:** Outside unit and in common
- Utilities:** Electricity & natural gas are metered & paid by the Tenant
- Zoning:** General Industrial Zone (M2)
Full list of permitted uses available upon request.
- Adjacent Yard:** Option to lease the adjoining fenced yard (40 ft x 50 ft)
- Availability:** Two months from Agreement



FLOOR PLAN



FOR LEASE

UNIT 1 & 2 - 28 STEVE FONYO DRIVE KINGSTON

PHOTOS



LOCATION

