

FOR LEASE

# HUDSON

MARDA LOOP

3360 16TH ST SW



**Estelle Tran**  
Managing Director  
403 993 2898  
estelle.tran@kpliglobal.com

**Anastasiya Gryshchenko**  
Vice President  
403 888 1748  
anastasiya.gry@kpliglobal.com

**KPLI**  
GLOBAL

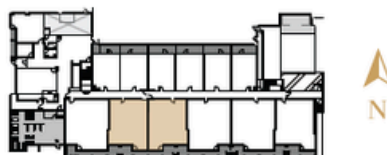
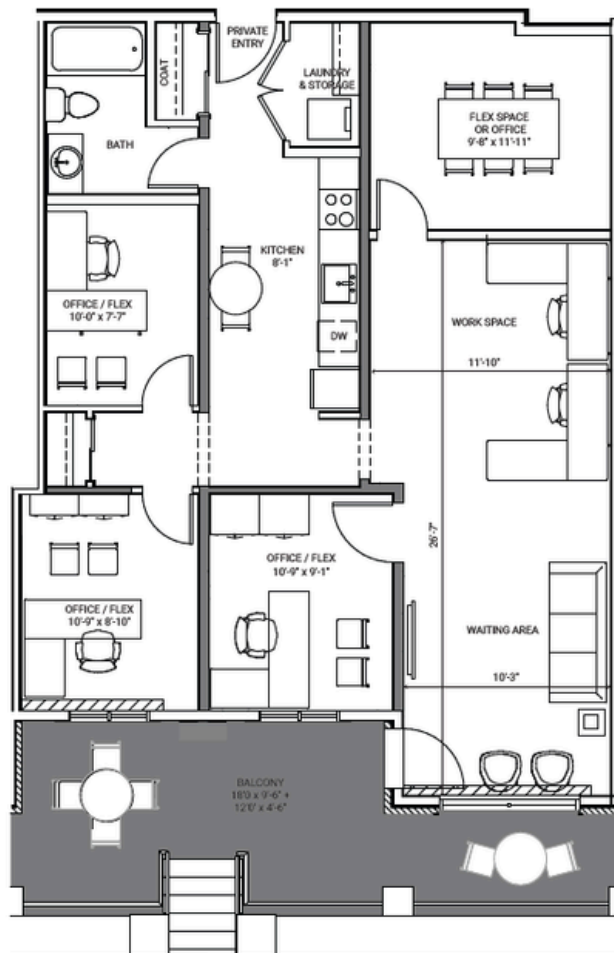
# SUITE 109

3 OFFICES + 1 FLEX, 1 BATH

1,103 SF

Walk-up "WORKSPACE"  
with 226 SF of balcony living area.

VIRTUAL TOUR >



# SUITE 109

3 OFFICES + 1 FLEX, 1 BATH



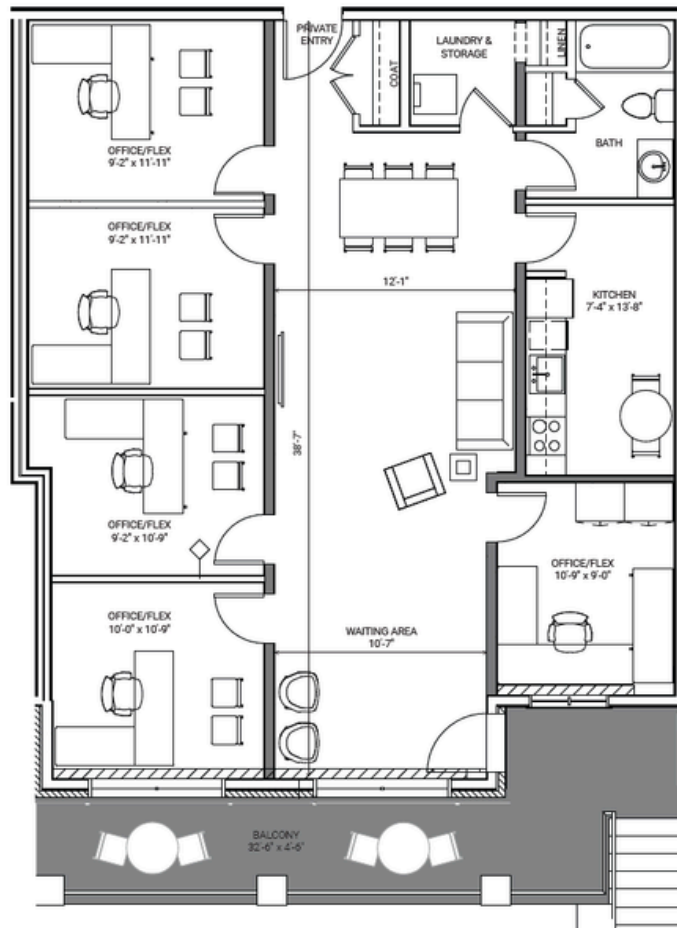
# SUITE 111

5 OFFICES / FLEX, 1 BATH

1,103 SF

Walk-up "WORKSPACE"  
with 226 SF of balcony living area.

VIRTUAL TOUR >



# SUITE 111

5 OFFICES / FLEX, 1 BATH



# AMENITIES



FITNESS FACILITY



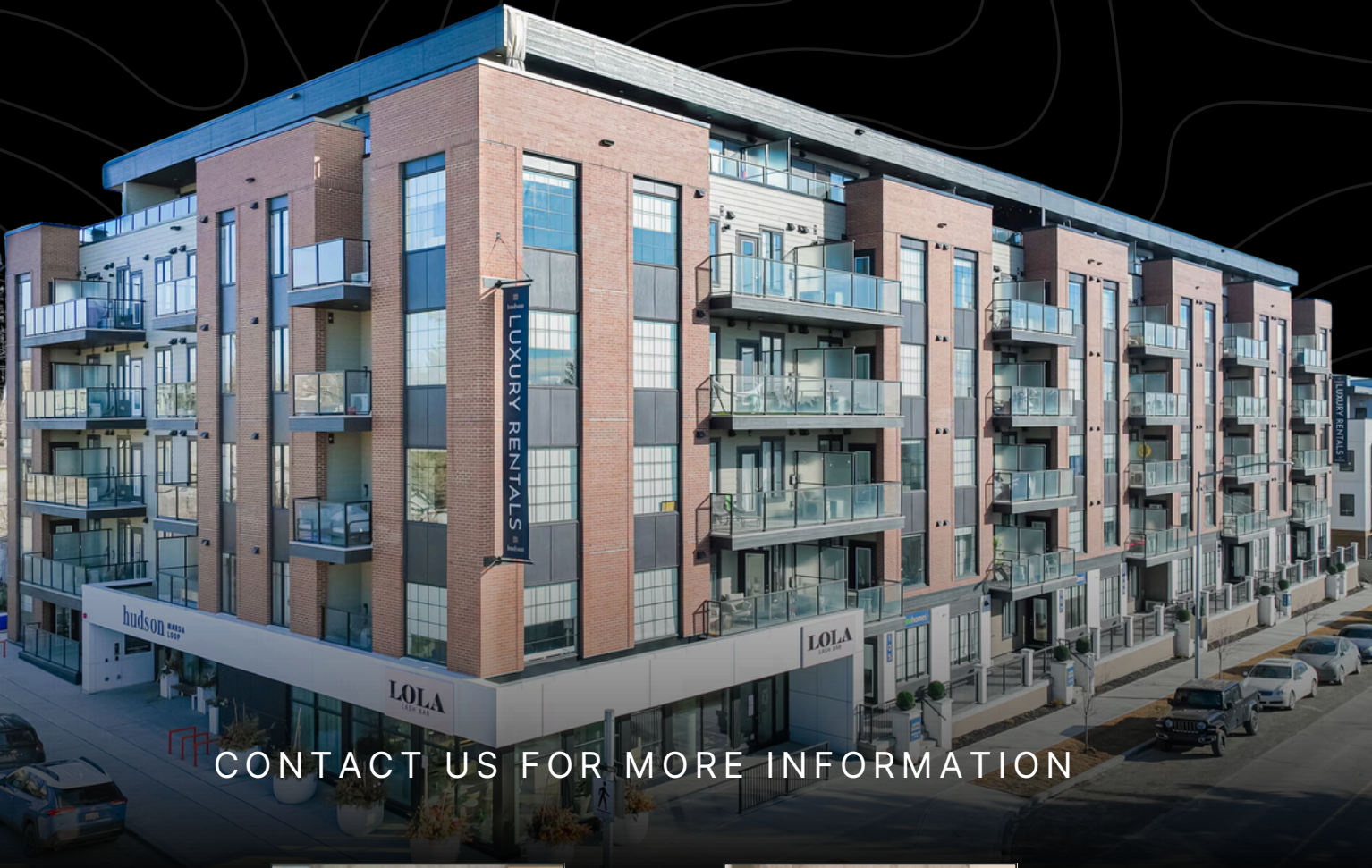
SOCIAL LOUNGE



PET SPA



COURTYARD



CONTACT US FOR MORE INFORMATION



**Anastasiya Gryshchenko**  
Vice President  
403 888 1748  
anastasiya.gry@kpliglobal.com



**Estelle Tran**  
Managing Director  
403 993 2898  
estelle.tran@kpliglobal.com