



Image courtesy of  
@ CommercialEdge

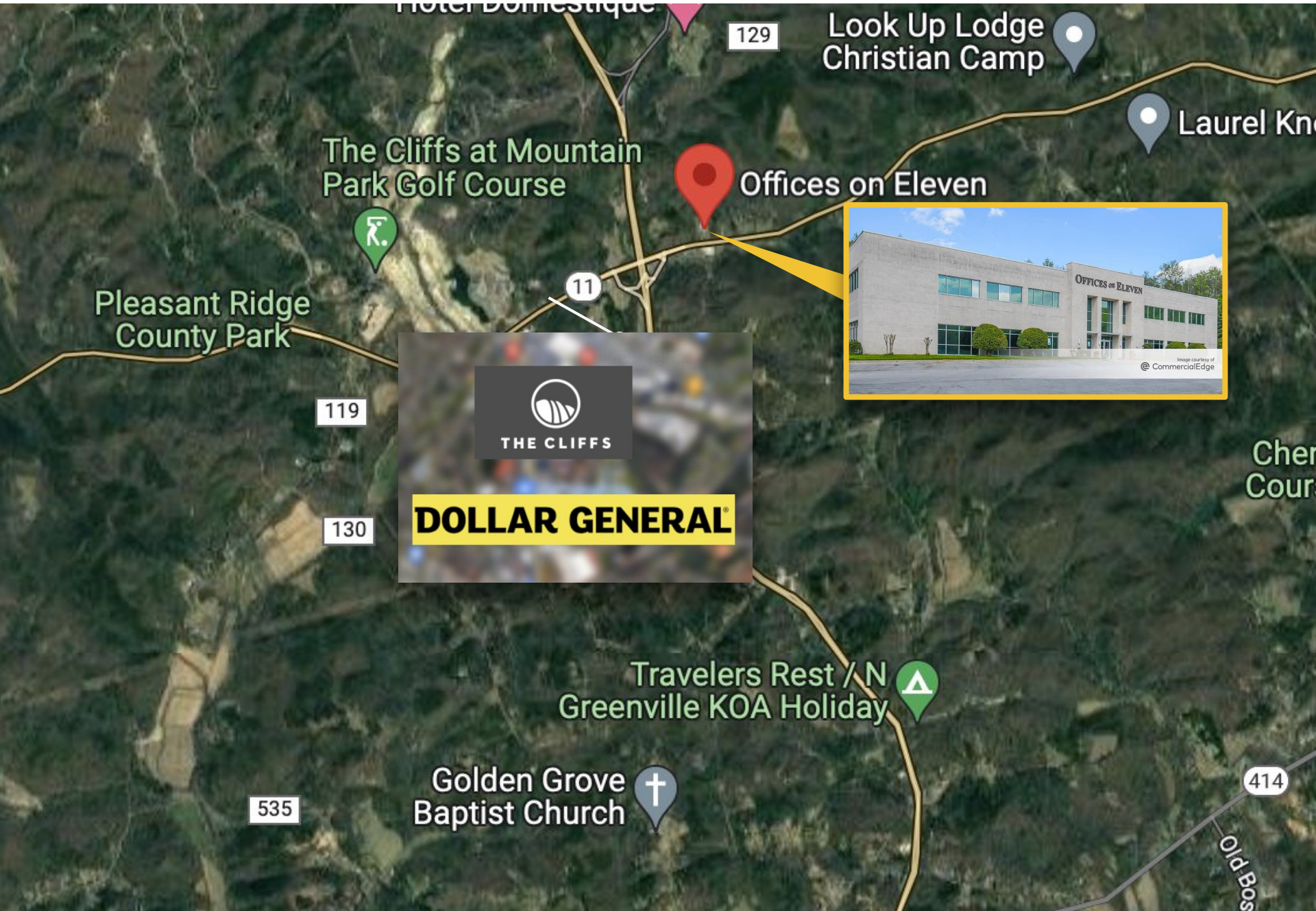
## OFFICE SPACES OFF HIGHWAY 11

3598 Highway 11 | Travelers Rest, SC



DIAMOND INVESTMENTS

# NEARBY BRANDS



Hotel Domestique

129

Look Up Lodge  
Christian Camp

Laurel Kn...

The Cliffs at Mountain  
Park Golf Course

Offices on Eleven



Pleasant Ridge  
County Park

11

119



130

**DOLLAR GENERAL**

Cher  
Cour

Travelers Rest / N  
Greenville KOA Holiday

535

Golden Grove  
Baptist Church

414

Old Bos



# OVERVIEW

21,349

BUILDING SF

150

PARKING SPACES

5.32

ACRES

2007

YEAR BUILT

## Property Highlights

- 2 story office building on 5.32 acres
- Common areas include a modern, spacious training room, 2-story entrance, spacious kitchen and outdoor patio
- Great mountain views just off Highway 25

## THE OFFERING

**OFFERING**

Lease

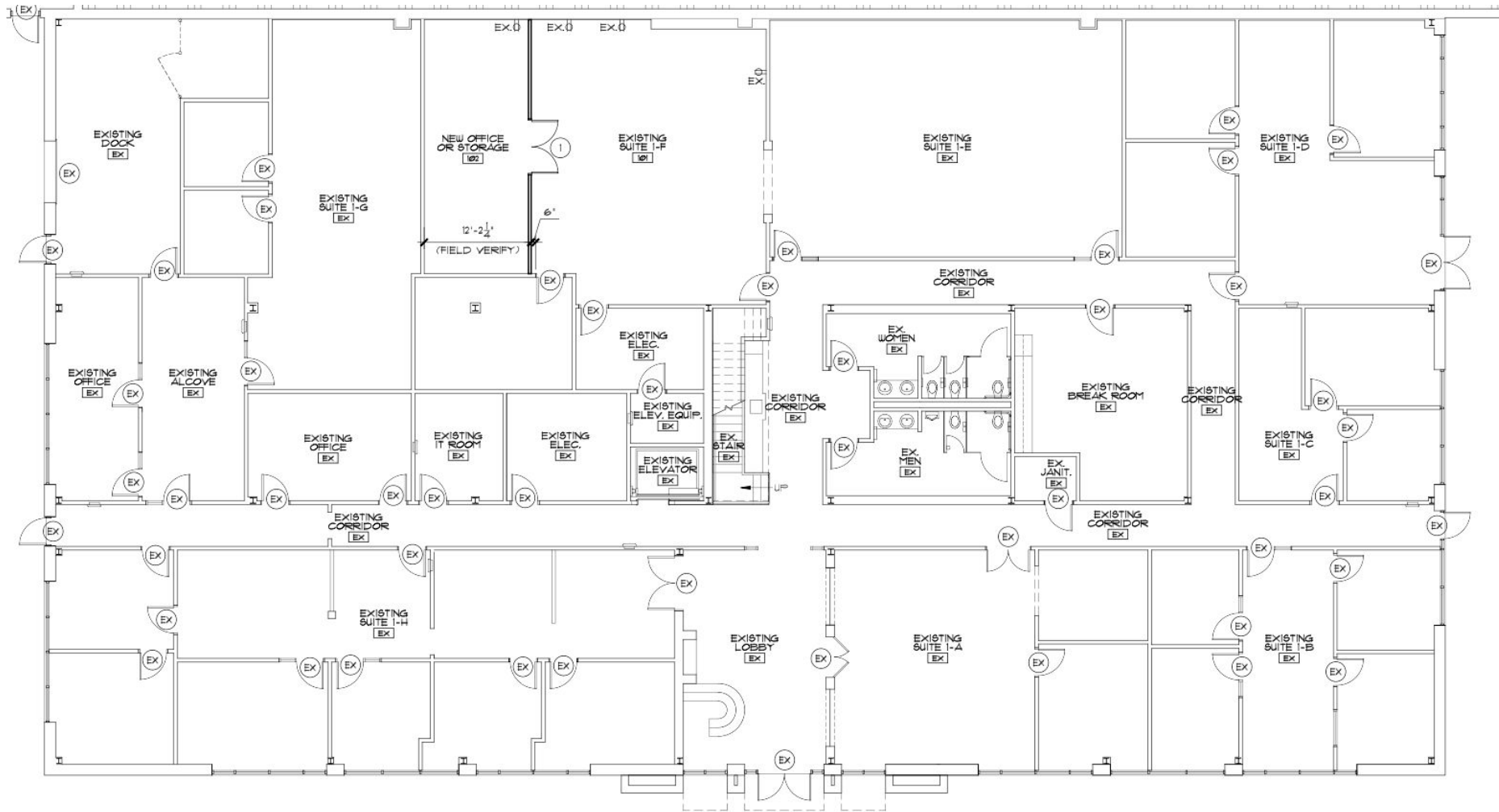
**TENANT**

4 VACANCIES

**PRICE**

\$550 Monthly

# FLOOR PLAN - FIRST FLOOR





IMAGES



3598 Highway 11 | TRAVELERS REST, SC

**MAIN CONTACT**

**(864) 400-7374**

Leasing@DiamondInvestments.us



DIAMOND INVESTMENTS