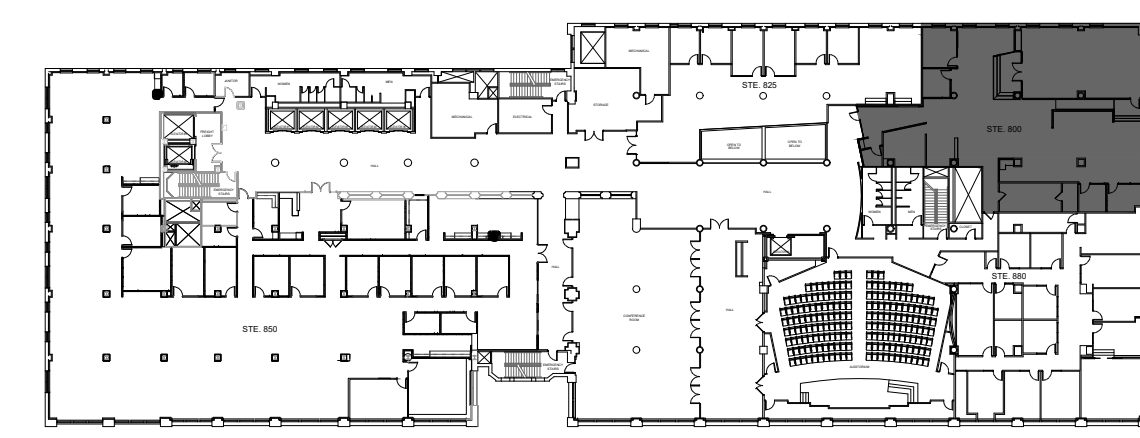


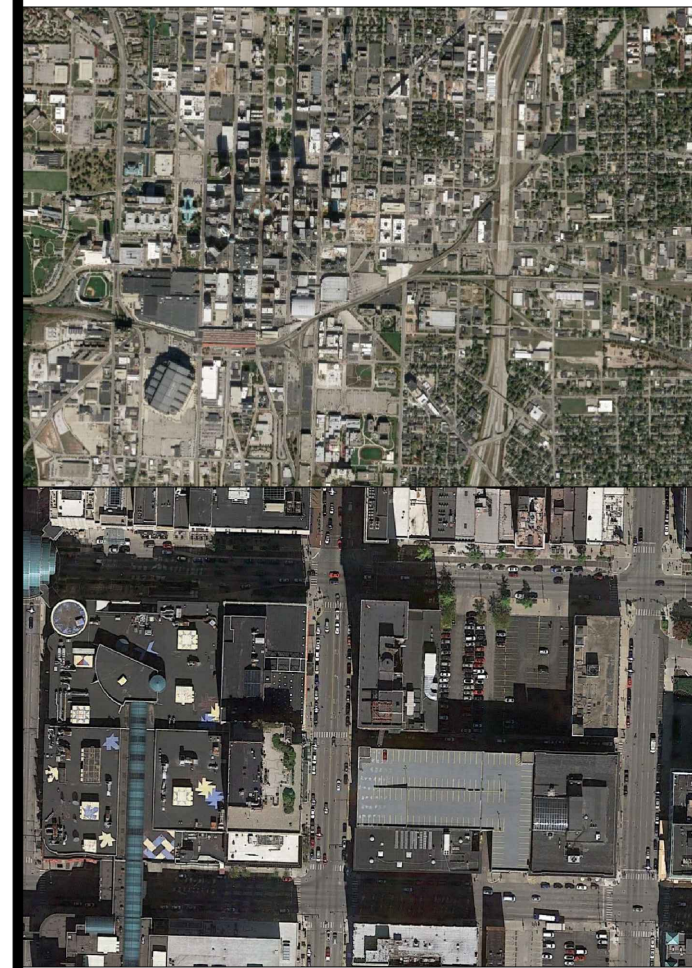
8TH FLOOR - SUITE 800 RENTABLE SQUARE FOOTAGE 5,676  
SCALE: NTS



KEY MAP  
SCALE: NTS



30 S. MERIDIAN STREET  
SUITE 1100  
INDIANAPOLIS, IN 46204  
PHONE 317-577-5600  
FAX 317-577-5605



NOTE: Negotiations with the stores listed and others not listed are in progress. No guarantee can be made that the listed stores will open in the center. All conditions and dimensions are subject to variation due to actual field conditions. All dimensions and areas shown should be verified prior to lease execution. This plan is preliminary and subject to change. Sheet size 24x36.

**30TH SOUTH MERIDIAN  
8TH FLOOR SUITE 800  
INDIANAPOLIS  
INDIANA**

Drawn By: eem	CHKD:
Date: 06/04/2024	Scale: AS NOTED
<b>DEVELOPMENT PLAN</b>	
Project No. 4071	<b>DP</b>

1:24x36.dwg - 30th South Meridian 8th Floor Suite 800 - 06/04/2024