



ZACUTO GROUP
COMMERCIAL REAL ESTATE

LIVE/WORK
CREATIVE
OFFICE/LOFT

1806 THAYER AVENUE
Century City

FOR LEASE

1806 THAYER AVENUE
LOS ANGELES, CA 90025

SIZE

1,623 SF

RATE

\$4.50/SF MG

TERM

Negotiable

AVAILABLE

Now

IRREPLACEABLE LOCATION

At the corner of Thayer Ave and Santa Monica Blvd, a few blocks from the Westfield Century City.

CREATIVE OFFICE LOFT

Live/Work layout that includes 2 offices/bedrooms, full kitchen, 2 bathrooms, and 2 patios. Plenty of storage & washer + dryer in unit.

HIGH DESIGN INTERIORS

Designed by Arya Group featuring sleek and modern finishes with high ceilings, wood floors and plenty of light throughout.



LISTING TEAM

JAKE ZACUTO

Managing Director

310.469.9012

DRE 01377441

LEOR BINSHTOCK

Executive Vice President

818.216.7242

DRE 01773798

1806 THAYER AVENUE, LOS ANGELES, CA 90025

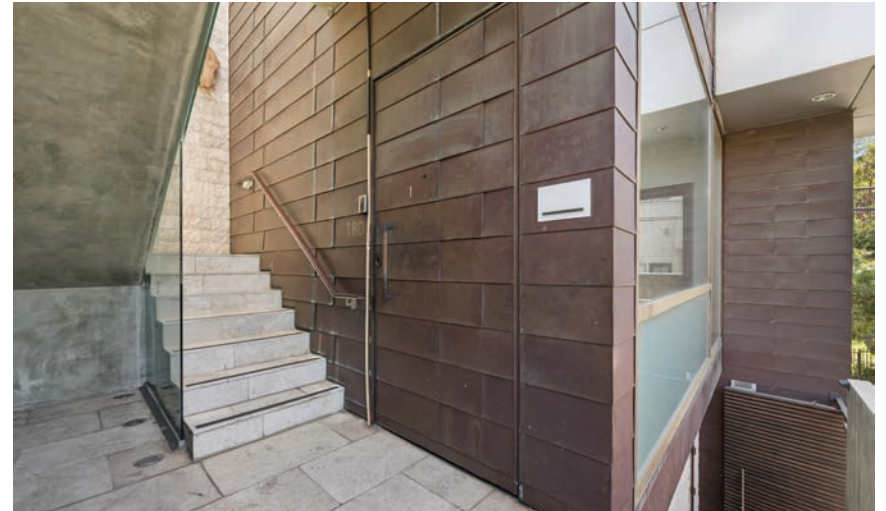


1806 THAYER AVENUE
Century City



1806 THAYER AVENUE, LOS ANGELES, CA 90025





1806 THAYER AVENUE
Century City



UCLA

University of California, Los Angeles



**1806
THAYER
AVENUE**

- CENTURY CITY MALL**
- APPLE STORE
 - NORDSTROM
 - BLOOMINGDALE'S
 - TESLA
 - LULULEMON
 - ÈATALY
 - SEPHORA
 - TIFFANY & CO.
 - EQUINOX
 - AMC THEATRE
 - J. CREW
 - DIN TAI FUNG
 - CONTAINER STORE
 - BURBERRY
 - VERSACE
 - MICROSOFT STORE

Beverly Hills

CARTIER

GUCCI

TIFFANY & CO.

BEVERLY WILSHIRE HOTEL

WALLY'S

NESPRESSO

LULULEMON

**BEVERLY HILLS
GOLDEN TRIANGLE**

AVRA

WESTWOOD VILLAGE

WESTWOOD

SAWTELLE JAPANTOWN

WEST LOS ANGELES

RANCHO PARK

CHEVIOT HILLS

MONTE MAR VISTA

BEVERLYWOOD

1806 THAYER AVENUE
Century City



JAKE ZACUTO

Managing Director

310.469.9012

jake@zacutogroup.com

DRE 01377441

LEOR BINSHTOCK

Executive Vice President

818.216.7242

leor@zacutogroup.com

DRE 0773798

No warranty, express or implied, is made as to the accuracy of the information contained herein. This information is submitted subject to errors, omissions, change of price, rental or other conditions, withdrawal without notice. All parties who receive this material should not rely on it, but should use it as a starting point of analysis, and should independently confirm the accuracy of the information contained herein through a due diligence review of the books, records, files and documents that constitute reliable sources of the information described herein. Logos and images are for identification purposes only and may be trademarks of their respective companies. All terms provided are approximate. Leasee to verify. 6/2026

ZACUTOGROUP.COM | 310.469.9300

