

## EXECUTIVE SUMMARY



### OFFERING SUMMARY

Available SF:	1,363 - 1,560 SF
Lease Rate:	Negotiable
Lot Size:	1.25 Acres
Year Built:	1996
Building Size:	7,488 SF
Renovated:	2016
Market:	Midwest City

### PROPERTY OVERVIEW

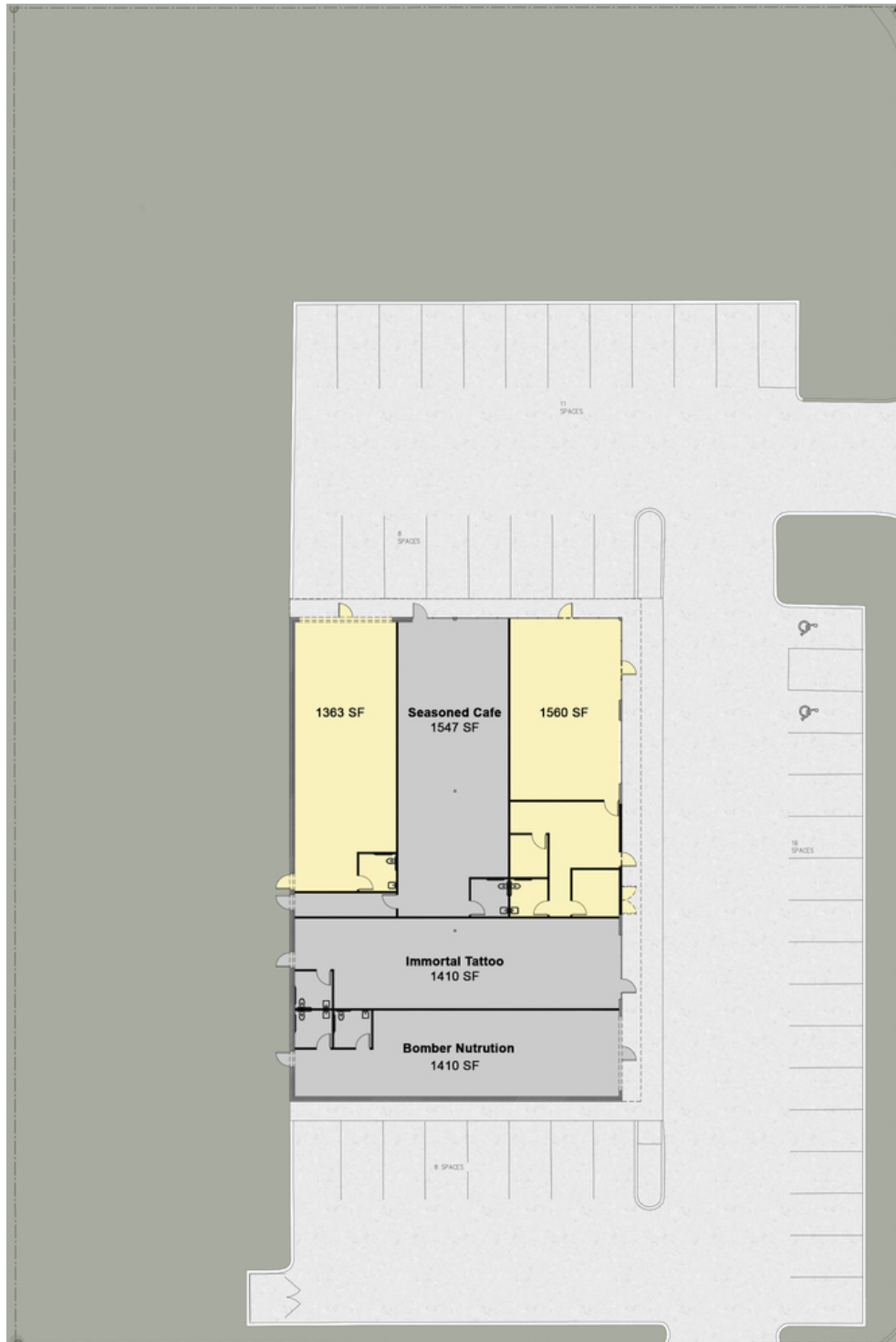
Retail Strip Center Located on Reno and Midwest Blvd in Midwest City, Oklahoma.

### PROPERTY HIGHLIGHTS

- High traffic location.
- Directly across from Winco and adjacent to Neighborhood Walmart.

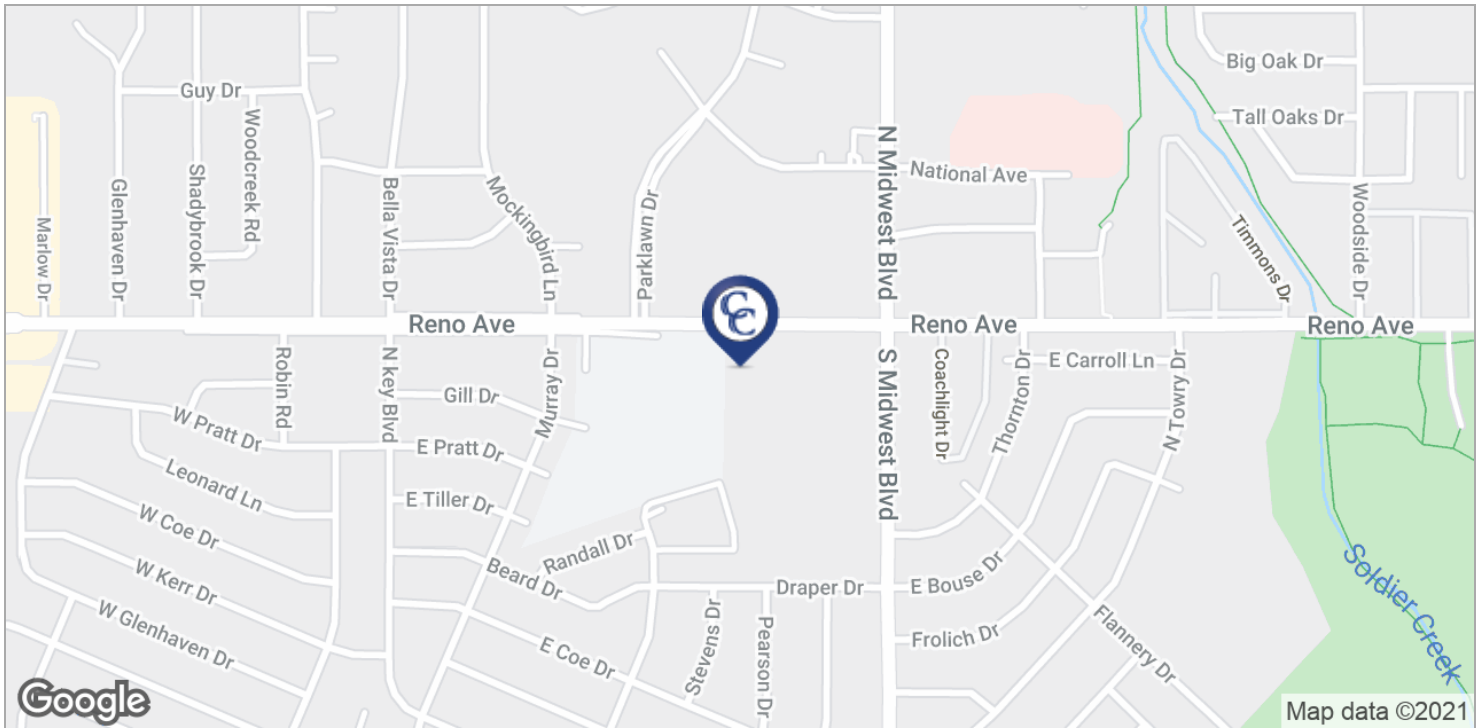
**ETHAN SLAVIN**  
405.830.0252  
ethan@creekcre.com

## SITE PLAN



**ETHAN SLAVIN**  
405.830.0252  
ethan@creekcre.com

## LOCATION MAPS



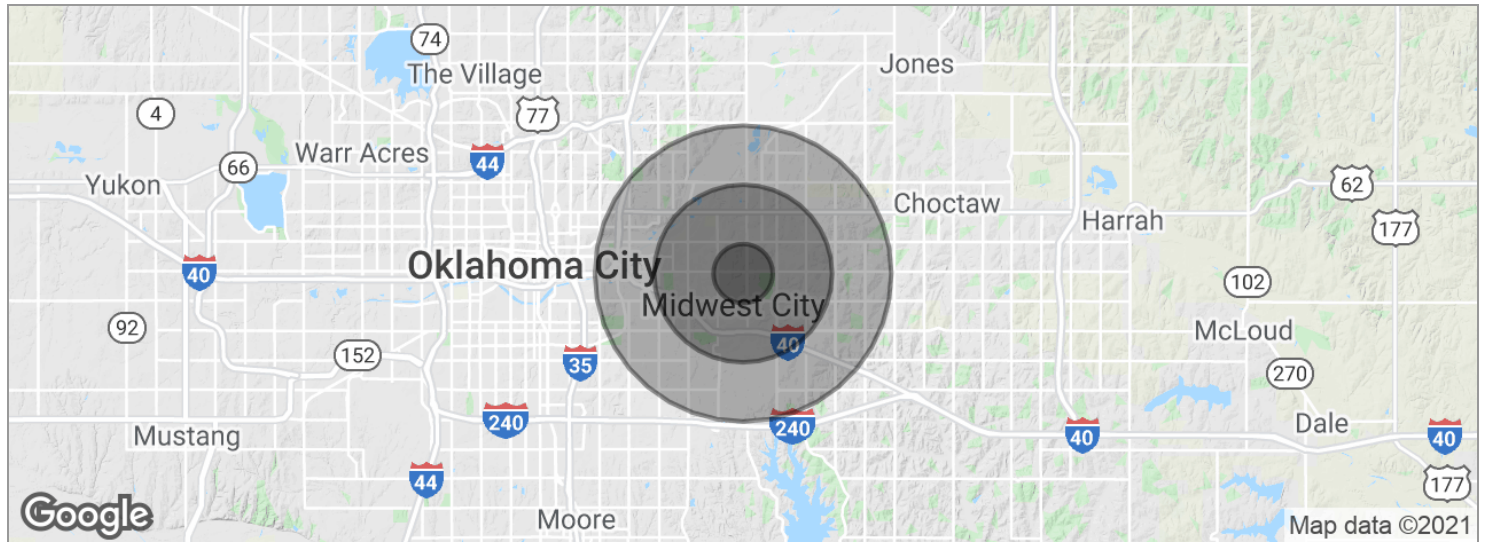
**ETHAN SLAVIN**  
405.830.0252  
ethan@creekcre.com

## RETAILER MAP



ETHAN SLAVIN  
405.830.0252  
ethan@creekcre.com

## DEMOGRAPHICS MAP



POPULATION	1 MILE	3 MILES	5 MILES
Total population	10,959	58,874	113,036
Median age	36.2	34.5	34.7
Median age (Male)	32.0	33.0	33.6
Median age (Female)	40.0	36.2	35.9
HOUSEHOLDS & INCOME	1 MILE	3 MILES	5 MILES
Total households	4,544	24,941	45,642
# of persons per HH	2.4	2.4	2.5
Average HH income	\$49,455	\$48,574	\$50,421
Average house value	\$117,443	\$108,044	\$96,898

\* Demographic data derived from 2010 US Census

**ETHAN SLAVIN**  
 405.830.0252  
 ethan@creekcre.com