



RETAIL PROPERTY
ADVISORS

SWC HWY 20/26 & Smeed Parkway

4202 Highway 20/26 | Caldwell, ID



For Sale/Ground Lease
Home Depot Anchored Pads Available



Logan Wheeler
208 472 2868
logan.wheeler@colliers.com

Bryan Vaughn
208 850 2191
bryan.vaughn@colliers.com

Mike Christensen
208 724 1064
mike.christensen@colliers.com

Bruce Hamous
818 636 8600
bhamous@retail-pa.com

4202 Highway 20/26

Property Details



Property Overview

Home Depot Anchored Site

Property Type	Retail Land
Land Size	1.13 acres - 2.71 acres
Parcel Type	For Sale/Ground Lease
Parcel Rate	Contact Agent

Space Available

Parcel	Size
1	1.19 acres
2	1.50 acres
3	1.09 acres
4	2.90 acres

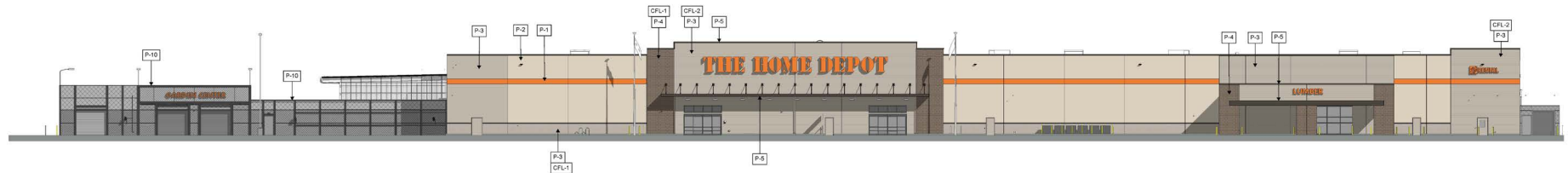
Site



Demographics

	1 Miles	3 Miles	5 Miles
Population	5,364	51,687	103,518
Households	1,696	16,731	33,659
Avg. HH Income	\$93,328	\$77,205	\$85,248

Renderings



Built from All the Right Materials

The Home Depot is the world's largest home improvement retailer with approximately 475,000 orange-blooded associates and more than 2,300 stores in the U.S., Canada and Mexico. The typical store today averages 105,000 square feet of indoor retail space, interconnected with an e-commerce business that offers more than one million products for the DIY customer, professional contractors, and the industry's largest installation business for the Do-It-For-Me customer.



FY 2023

Sales \$152.7 Billion

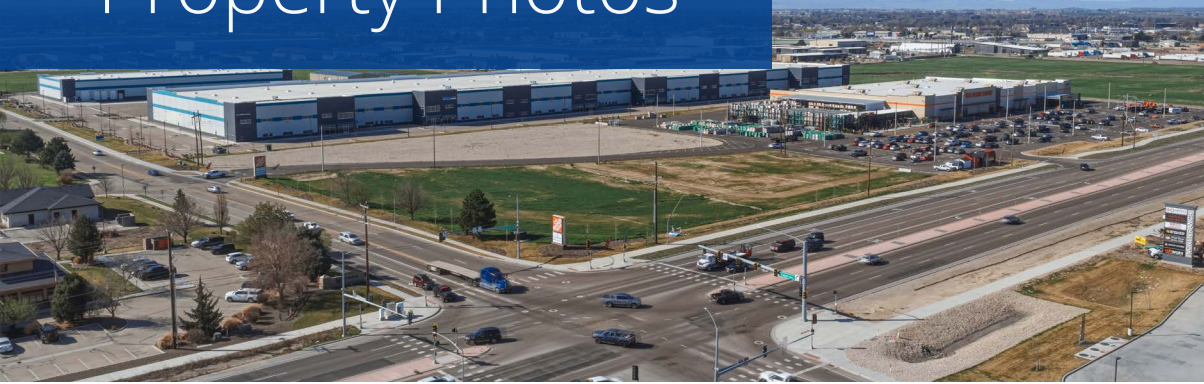
Operating Margin 14.2%

ROIC 36.7%

Source: [HomeDepot.com](https://www.homedepot.com)

4202 Highway 20/26

Property Photos



Nearby Merchants

